

# PRIMARY COVER KIT



**P/N 2880785-266 (GLOSS BLACK)**

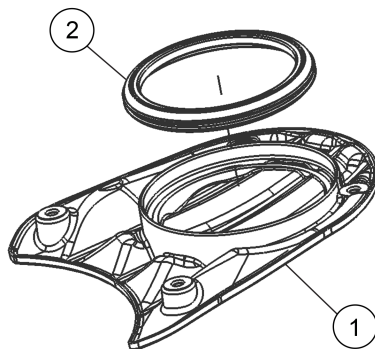
## APPLICATION

2014-2015 INDIAN MOTORCYCLES

## BEFORE YOU BEGIN

Read these instructions and check to be sure all parts and tools are accounted for in package. Please retain these installation instructions for future reference and parts ordering information.

## KIT CONTENTS



REF	QUANTITY	PART DESCRIPTION	PART NUMBER
1	1	Cover-Access Hole	5138847
2	1	Seal-Primary Access Hole	5415433
	1	Instructions	9925681

## TOOLS NEEDED

- Socket Wrench
- Torque Wrench
- M5 Hex Socket

## APPROXIMATE ASSEMBLY TIME

5 minutes

## IMPORTANT

Your Indian PRIMARY COVER KIT is exclusively designed for your vehicle. Please read the installation instructions thoroughly before beginning. Installation is easier if the vehicle is clean and free of debris. For your safety, and to ensure a satisfactory installation, perform all installation steps correctly in the sequence shown.

## INSTALLATION INSTRUCTIONS

### NOTE

Prior to installation place motorcycle upright with the front wheel clamped in a wheel vice. Idle engine for one minute with the motorcycle clamped in a wheel vice.

### Removal

Refer to owner's manual to remove the left floorboard.

1. Remove the four screws with M5 hex socket.
2. Remove cover and seal.

### Installation

1. Ensure the ring surface is clean and free of oil prior to installing seal.

2. Place new seal ② on clean ring surface on back of cover. See Figure.
3. Install cover ① on primary cover. See Figure.
4. Reinstall screws (A) using M5 socket.

### TORQUE

7.4 ft. lbs. (10 Nm)

