

ARMREST KIT



P/N 2880032; 2880759

APPLICATION

Indian Motorcycles with Indian Motorcycle Trunk

NOTE

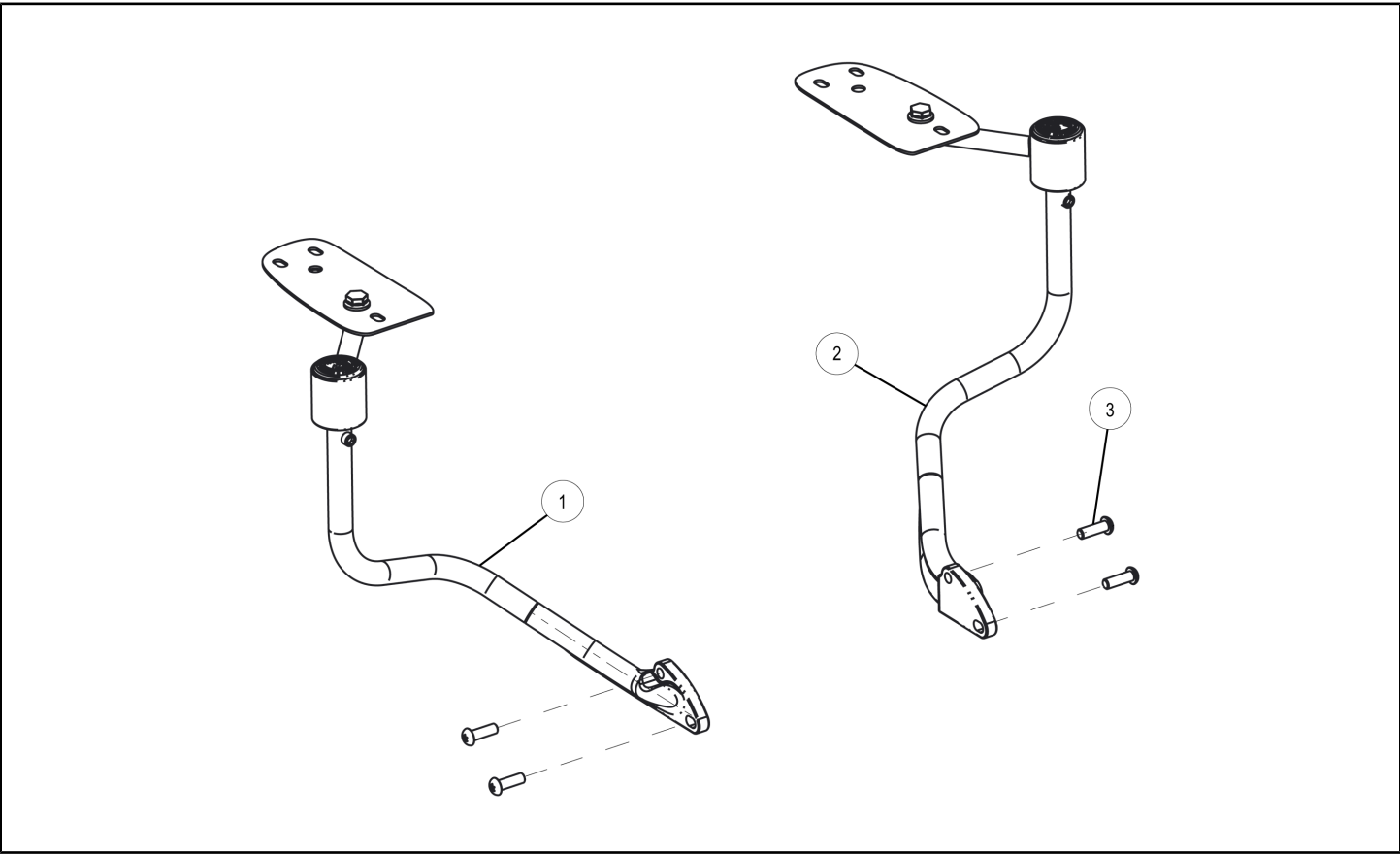
Arm Rest Pad Kit Purchased Separately. See dealer for correct color code for arm rest pad kit.

BEFORE YOU BEGIN

Read these instructions and check to be sure all parts and tools are accounted for. Please retain these installation instructions for future reference and parts ordering information.

KIT CONTENTS

This Kit includes:



For Motorcycles with Hard Trunk (Kit PN 2880032)

REF	QTY	PART DESCRIPTION	PART NUMBER
1	1	Armrest, LH	1020279
2	1	Armrest, RH	1020280
3	4	Screw-M8 X 1.25 X 25	7520040
	1	Instructions	9924891

For Motorcycles with Soft Trunk (Kit PN 2880759)

REF	QTY	PART DESCRIPTION	PART NUMBER
1	1	Armrest, LH	1021125
2	1	Armrest, RH	1021126
3	4	Screw-M8 X 1.25 X 25	7520040
	1	Instructions	9924891

TOOLS REQUIRED

- 5mm Allen Wrench (optional)
- 8mm Wrench (optional)
- T40 Torx Bit
- Torque Wrench

IMPORTANT

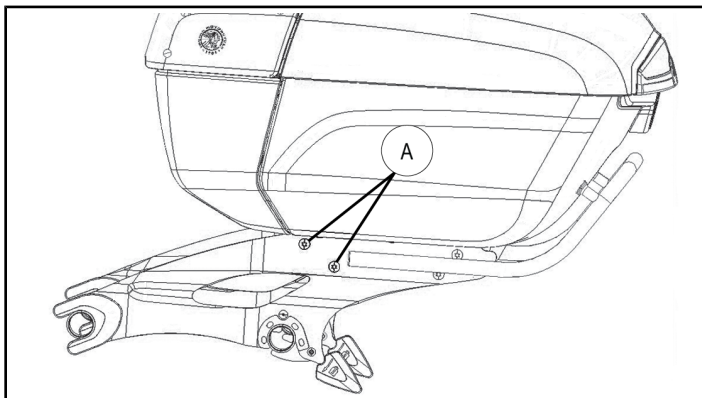
Your Indian ARMREST KIT is exclusively designed for your vehicle. Please read the installation instructions thoroughly before beginning. Installation is easier if the vehicle is clean and free of debris. For your safety, and to ensure a satisfactory installation, perform all installation steps correctly in the sequence shown.

ASSEMBLY TIME

Approximately 5 minutes

INSTALLATION INSTRUCTIONS

1. Remove the M8 screws (A).



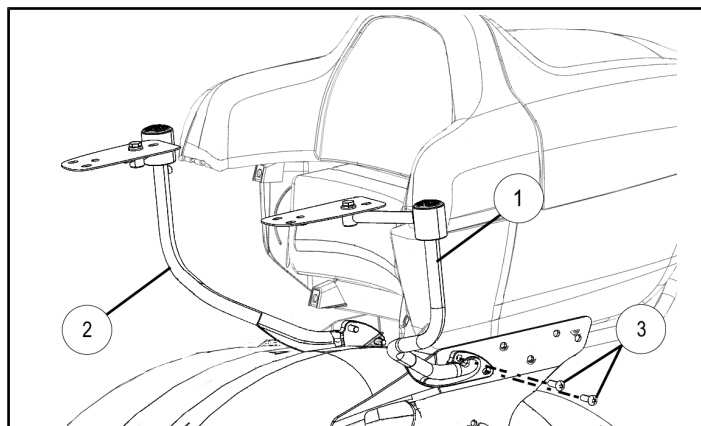
2. Use the M8 screws ③ provided in this kit to bolt the left armrest ① and right armrest ② (PN 1020279 LH and PN 1020280 RH for motorcycles with a hard trunk; PN 1021125 LH and PN 1021126 RH for motorcycles with a soft trunk) to their respective trunk mount brackets. Torque screws to specification.

TORQUE

18 ft. lbs. (24.4 Nm)

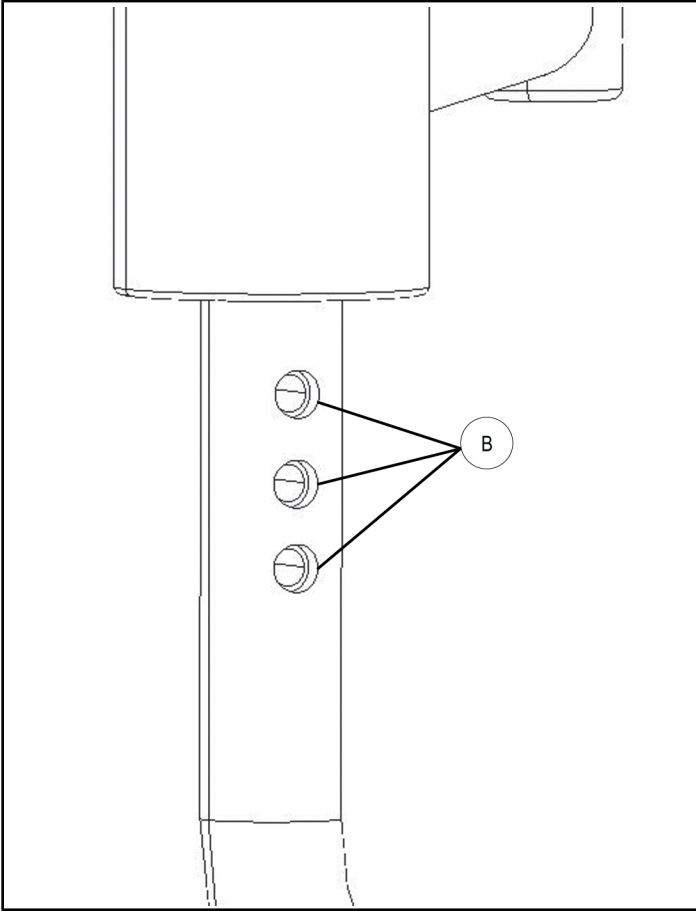
NOTE

Allow arm rest to hang down under their own weight while tightening bolts.



Vertical Adjustment (Optional)

3. The arm rest has three height adjustment positions (B). If adjustment is desired remove the screw using a 5mm Allen wrench.



4. Adjust the height and also replace the screw (C). Torque screws to specification.

TORQUE

90 in-lbs. (10.16 Nm)

NOTE

The height adjustment screw (C) also affects the position of the arm rest pads relative to the trunk. Loosen this screw and re-position as necessary to create even distance between arm rest pads and trunk.

