

DRIVER BACKREST KIT



P/N 2880231; 2880871; 2880985

APPLICATION

All Indian Scout Motorcycles

⚠ WARNING

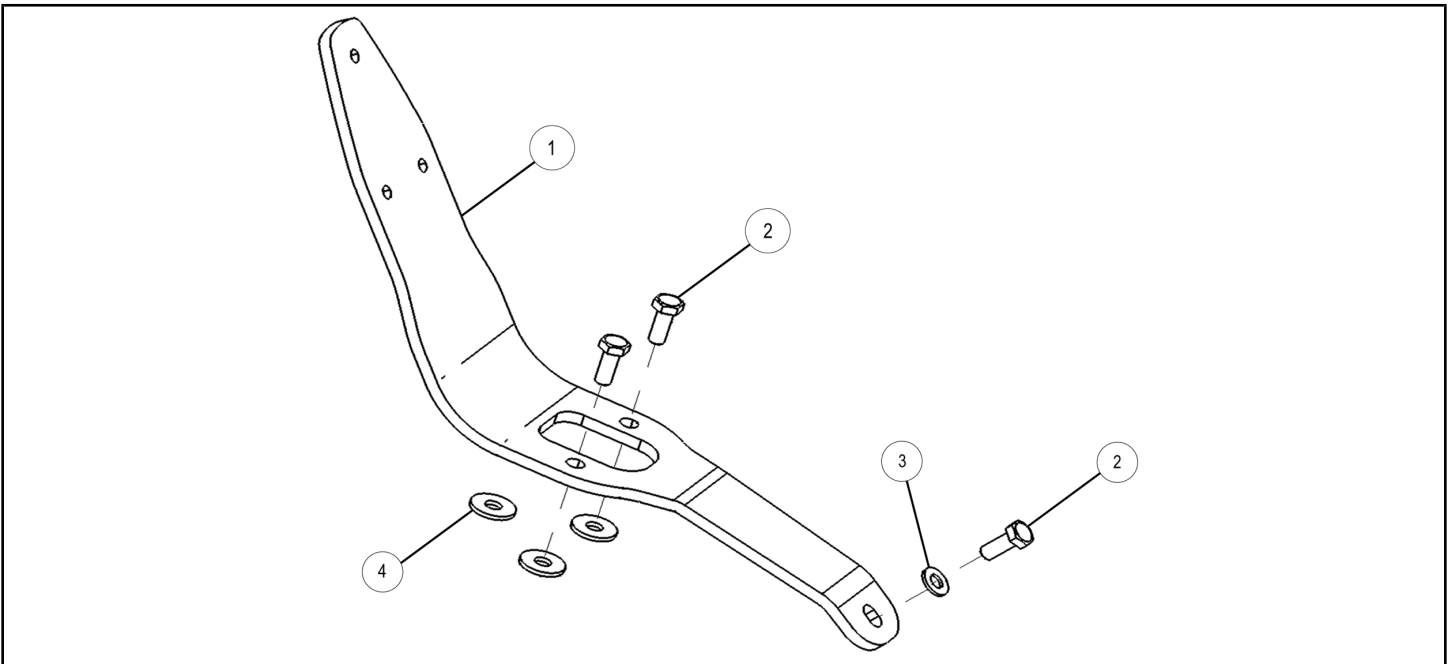
This accessory is only approved for use with the models listed. NEVER use this accessory on non-approved models. Use of this accessory on models other than those listed in these instructions may negatively affect the stability of the vehicle, lead to loss of control, and result in serious injury or death.

BEFORE YOU BEGIN

Read these instructions and check to be sure all parts and tools are accounted for. Please retain these installation instructions for future reference and parts ordering information.

KIT CONTENTS

This Kit includes:



Kit PN 2880231 OE Seat Backrest

REF	QTY	PART DESCRIPTION	PART NUMBER
1	1	Driver Backrest Bracket (For PN 2880231)	5259556
2	3	Screw, M8 X 20 mm	7518097
3	1	Small Washer	7556245
4	3	Large Washer	7555960
	1	Instructions	9925209

Kit PN 2880871 Extended Reach Seat Backrest

REF	QTY	PART DESCRIPTION	PART NUMBER
1	1	Driver Backrest Bracket (For PN 2880871)	5260482
2	3	Screw, M8 X 20 mm	7518097
3	1	Small Washer	7556245
4	3	Large Washer	7555960
	1	Instructions	9925209

Kit PN 2880985 Reduced Reach Seat Backrest

REF	QTY	PART DESCRIPTION	PART NUMBER
1	1	Driver Backrest Bracket (For PN 2880985)	5260637
2	3	Screw, M8 X 20 mm	7518097
3	1	Small Washer	7556245
4	3	Large Washer	7555960
	1	Instructions	9925209

TOOLS REQUIRED

- 6 mm Hex Key Socket
- Socket Wrench
- Torque Wrench
- 13 mm Socket

IMPORTANT

Your Indian DRIVER BACKREST KIT is exclusively designed for your vehicle. Please read the installation instructions thoroughly before beginning. Installation is easier if the vehicle is clean and free of debris. For your safety, and to ensure a satisfactory installation, perform all installation steps correctly in the sequence shown.

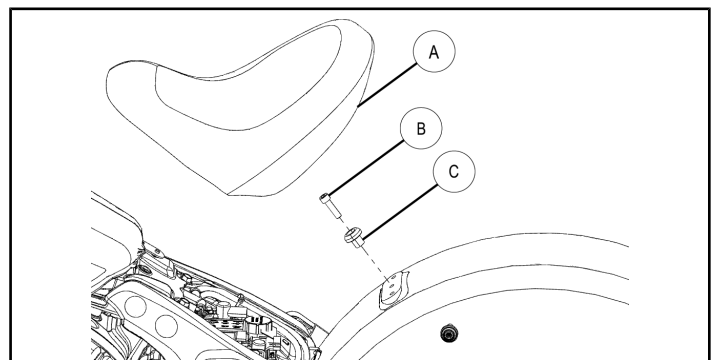
ASSEMBLY TIME

Approximately 24 minutes

INSTALLATION INSTRUCTIONS

REMOVAL

1. Lift front of existing seat until grommet in seat base is clear of mounting peg just rear of the fuel tank.
2. Pull seat (A) up to disengage rear of seat base from mounting post on the rear fender.
3. Carefully hang seat from lanyard to avoid damaging finished surfaces.
4. Remove M8 bolt (B) that fastens the seat mounting post (C) to the rear fender frame. Save post and bolt for reinstallation.

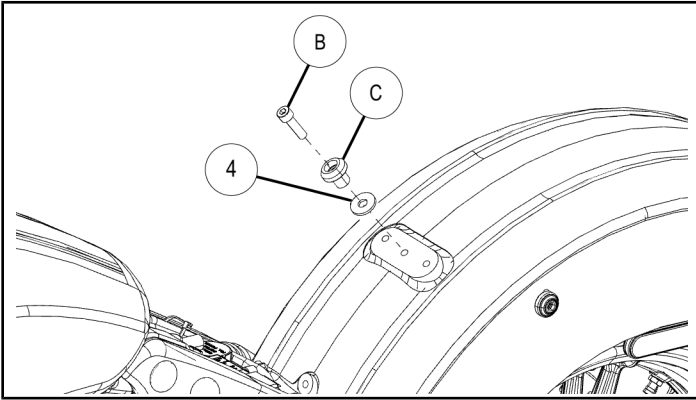


INSTALLATION

1. Reinstall seat mounting post (C) and M8 bolt (B) removed previously with one large washer (4) between the rear fender frame and mounting post. Torque bolt to specification.

TORQUE

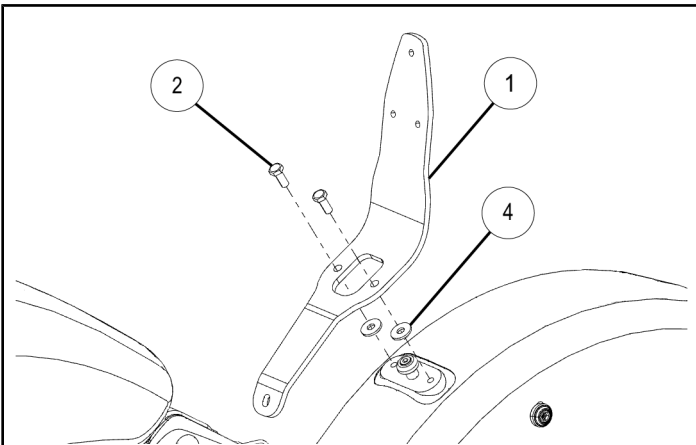
18±2 ft. lbs. (24.4±2.7 Nm)



2. **If passenger seat or solo rack is not installed:** Place backrest bracket (1) onto motorcycle as shown with two large washers (4) between the fender frame and backrest bracket. Install two M8 hex head screws (2) in the holes by the seat mounting post and torque to specification.

TORQUE

18±2 ft. lbs. (24.4±2.7 Nm)



If passenger seat or solo rack is installed:
Remove two M8 hex head screws (E) from passenger seat bracket located on either side of seat mounting post. Place driver backrest bracket (1) on motorcycle as shown with passenger seat bracket (D) between the frame and the backrest bracket.

NOTE

Large washers are not needed underneath the backrest bracket.

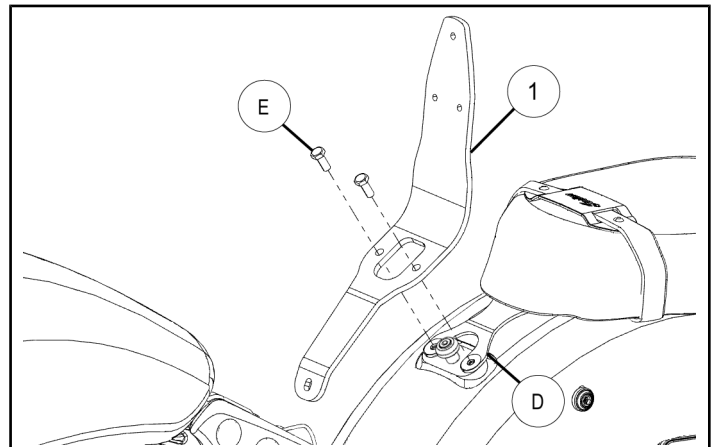
Reinstall two M8 hex head screws (E) in the holes by the seat mounting post and torque to specification.

TORQUE

18±2 ft. lbs. (24.4±2.7 Nm)

NOTE

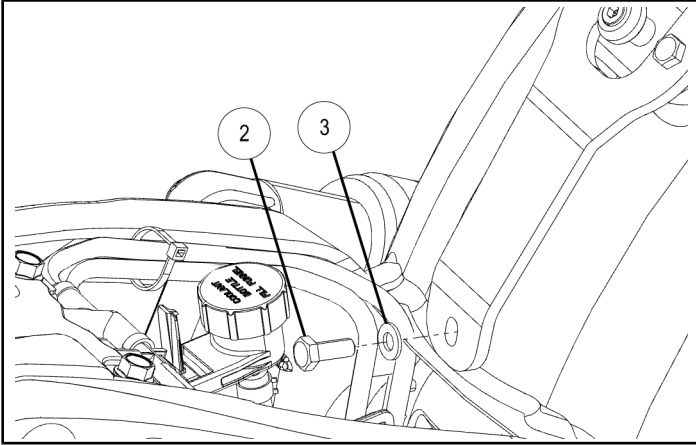
The two M8 bolts provided with the kit are not needed.



3. Install one M8 Screw ② and one small washer ③ to secure the front side of the bracket and torque to specification.

TORQUE

18±2 ft. lbs. (24.4±2.7 Nm)



4. Place seat onto the motorcycle, approximately 1.5" to the rear of the mounted position. Press down at the base of the seat and slide the seat forward to engage the rear of the seat with the mounting post on rear fender.
5. Push front of seat down onto mounting peg just rear of the fuel tank. Mounting peg inserts into grommet in seat base.
6. Pull up on rear of seat to ensure seat base engagement with frame mounting post on the fender.
7. Install backrest pad following the backrest pad installation instructions.

⚠ WARNING

Ensure seat mounting peg is engaged in seat base when installing seat.