

PASSENGER BACKREST SUPPORT KIT



P/N 2880669; 2880670; 2880832; 2880833

APPLICATION

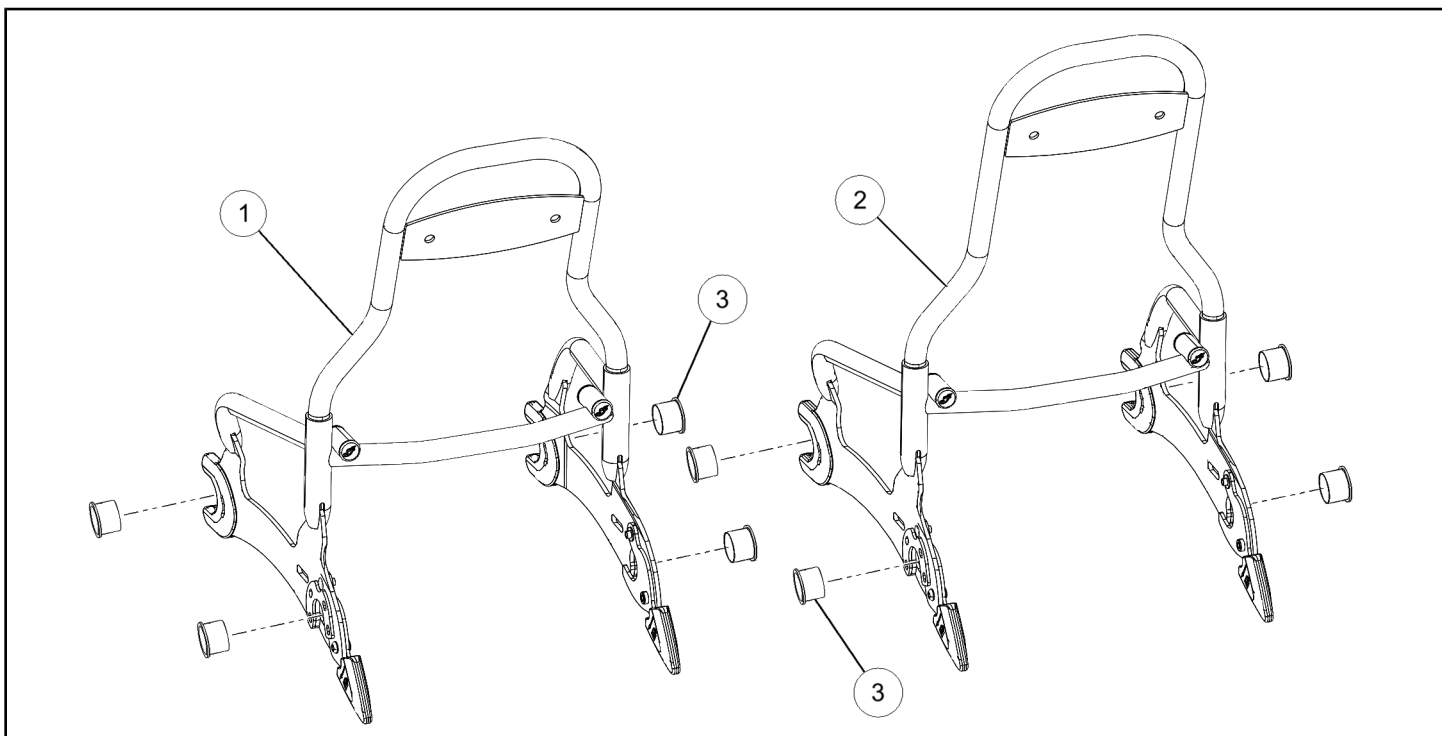
All Full-Sized Indian Motorcycles

BEFORE YOU BEGIN

Read these instructions and check to be sure all parts and tools are accounted for. Please retain these installation instructions for future reference and parts ordering information.

KIT CONTENTS

This Kit includes:



REF	QTY	PART DESCRIPTION	PART NUMBER
1	1	Kit-Pass Backrest, Cruiser, Short, CHR	2880669
	1	Kit-Pass Backrest, Tour, Short, CHR	2880832
2	1	Kit-Pass Backrest, Cruiser, Tall, CHR	2880670
	1	Kit-Pass Backrest, Tour, Tall, CHR	2880833
3	4	Spool Bushing (Included with Tour Backrest)	5450769
	1	Instructions	9926861

TOOLS REQUIRED

- 4 mm Hex Key Socket
- 6 mm Hex Key Socket
- Torque Wrench
- Ratchet Extension
- Ratchet

IMPORTANT

Your Indian PASSENGER BACKREST SUPPORT KIT is exclusively designed for your vehicle. Please read the installation instructions thoroughly before beginning. Installation is easier if the vehicle is clean and free of debris. For your safety, and to ensure a satisfactory installation, perform all installation steps correctly in the sequence shown.

ASSEMBLY TIME

Approximately 15 minutes

INSTALLATION INSTRUCTIONS

REMOVAL (IF NECESSARY)

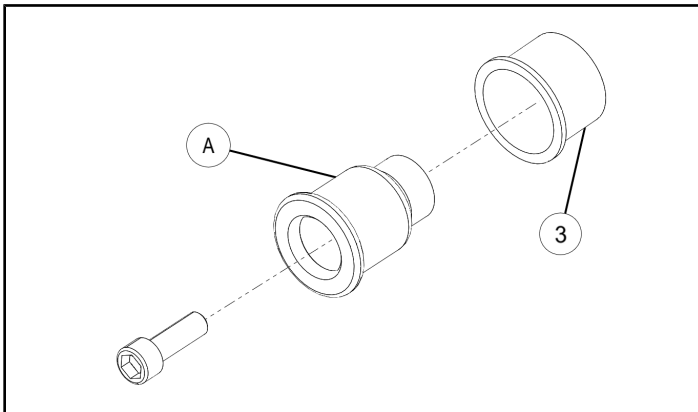
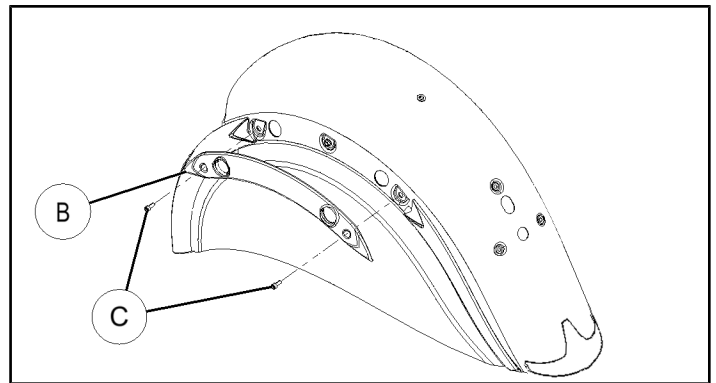
1. (Tour only) Remove side covers. Disconnect saddlebag wiring connectors.
2. (Tour only) Remove saddle bags using lock and ride latches. Carefully set aside for re-assembly.
3. (Tour only) Using 6 mm hex key socket, remove four spools used to fasten the saddle bags to the vehicle.
2. (Tour only) Loosen 6 mm screws (C) securing fender trim (B) on both sides of vehicle.

INSTALLATION

1. (Tour only) Install spool bushings ③ over spools (A).

NOTE

Ensure flanges on spool (A) and spool bushing ③ are orientated as shown.



3. (Tour only) Install spool bushing assembly (D) and torque fasteners to following specification.

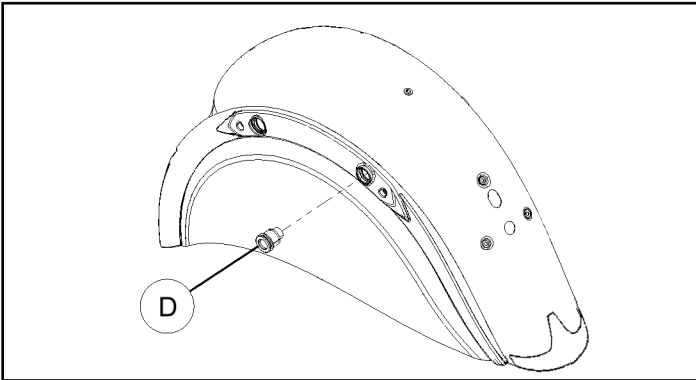
TORQUE

for MY14 motorcycles: 18 ft. lbs. (24.4 Nm)
for MY15 motorcycles: 25 ft. lbs. (34 Nm)

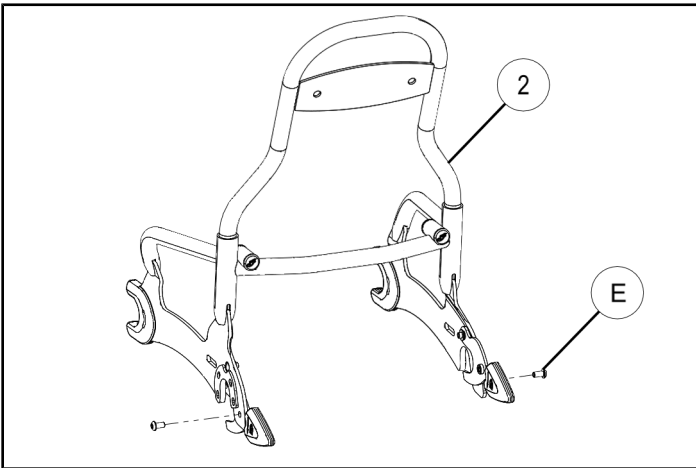
Torque fender trim screws (C) to specification.

TORQUE

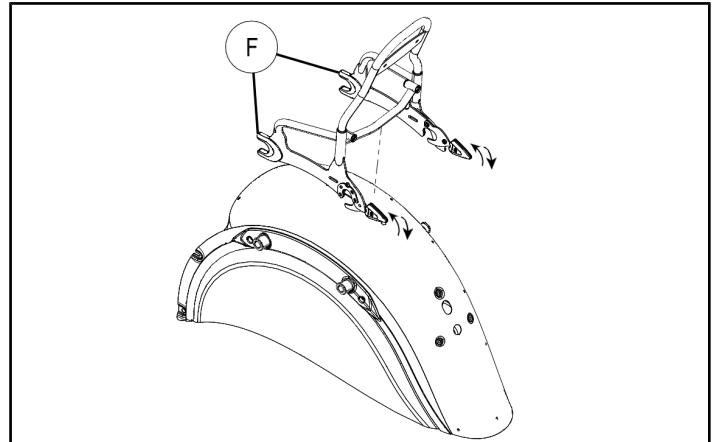
Screws: 84 in. lbs. (9.24 Nm)



4. Using 4 mm hex key socket, remove two button head screws (E) from latches on passenger backrest ②.



5. Place front mounts (F) of backrest onto front spool bushing assembly. Rotate passenger backrest down onto vehicle and lock into place by rotating lock levers downwards as shown.



6. For tamper resistant installation, install button head screws (E) and torque to specification.

TORQUE

7.5 +/- 1 ft. lbs. (10.2 +/- 1.3 Nm)

7. (Tour only) Reinstall saddlebags using lock and ride latches.
8. (Tour only) Reconnect saddlebag wire connectors. Install side covers.
9. Install passenger backrest pad following the backrest pad installation instructions.