

# FUEL AND DUMMY CAP KIT



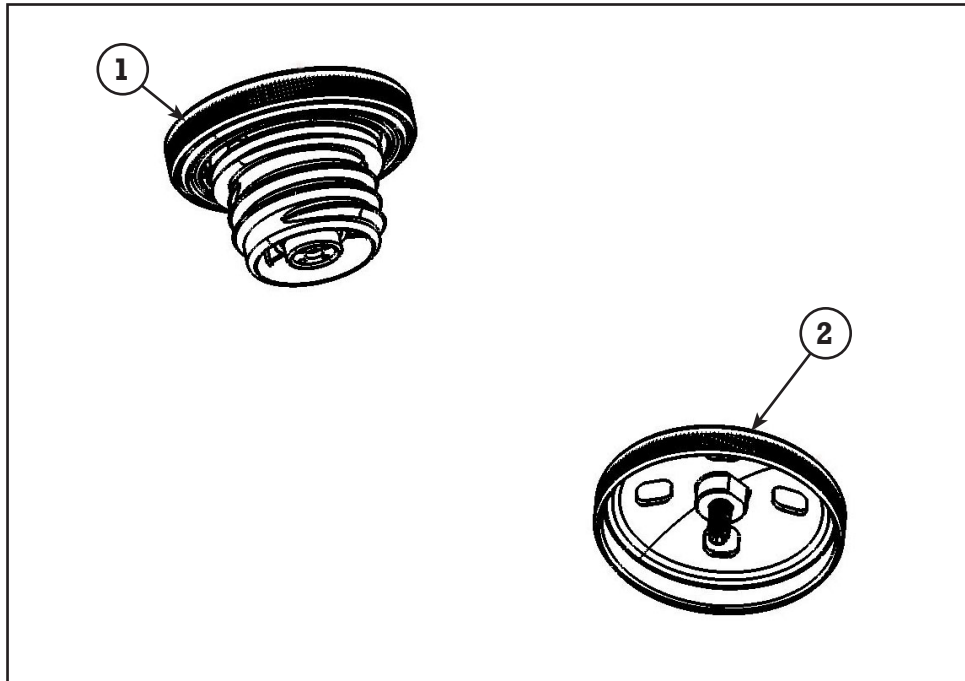
**P/N 2880663-266 (Gloss Black)**

## APPLICATION

2014-2015 INDIAN MOTORCYCLES

## BEFORE YOU BEGIN

Read these instructions and check to be sure all parts and tools are accounted for in package. Please retain these installation instructions for future reference and parts ordering information.



## KIT CONTENTS

Ref	Qty	Part Description	Part Number
1	1	Fuel Cap, Black	5138508
2	4	Dummy Fuel Cap, Black	5138538
	1	Instructions	9925561

## APPROXIMATE ASSEMBLY TIME

2 min

## IMPORTANT

Your Indian FUEL AND DUMMY CAP KIT is exclusively designed for your vehicle. Please read the installation instructions thoroughly before beginning. Installation is easier if the vehicle is clean and free of debris. For your safety, and to ensure a satisfactory installation, perform all installation steps correctly in the sequence shown.

## INSTALLATION INSTRUCTIONS

**NOTE:** Place motorcycle on firm surface on side stand.

### Removal:

1. Remove both the fuel cap and the dummy fuel cap from the fuel tank.

### Installation:

1. Install provided dummy cap (2) on the left side of the fuel tank.
2. Install provided fuel cap (1) on the right side of the fuel tank.

