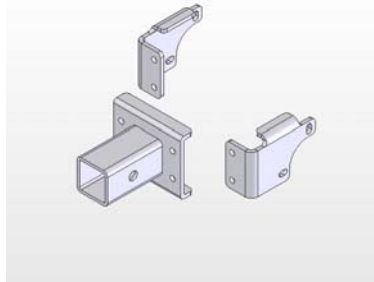




85180 – Suzuki Swing Axle 2” Receiver Hitch

Description	Quantity
Left Side Plate	1
Right Side Plate	1
Hitch Tube Weldment	1
5/16” x 1.25” Grade 8 Bolt	4
5/16” Grade 8 Nylock Nut	4
5/16” Flat Washer	8
5/8” x3.00” Bent Hitch Pin	1
R-Pin	1
Instruction Manual	1



Hitch Assembly:

- Using the 4 -5/16” bolts provided, loosely attach the Hitch Tube Weldment to the two brackets provided. Secure with flat washer and Nylock nut provided.

Hitch Mounting:

- Remove the (4) 10mm bolts that hold the stock hitch on the ATV. Remove OEM Hitch.
- Mount DirtWorks hitch (85180) to the same holes that the existing hitch was in and attach using the same OEM bolts that you just removed.
- Tighten down the Receiver Hitch Plate to the Left and Right Side Plates, making sure that the Hitch is level horizontally while tightening.

Hitch Use:

- The 2” Receiver hitch is designed to allow you to quickly and easily mount and dismount the DirtWorks 3-Point Hitch system.
- Kolpin recommends the use of the DirtWorks Suspension Lock with the use of the DirtWorks system.
- The hitch can also be used for chores around the house, such as moving your boats, trailers, etc.

Hitch Compatible With:

- 2003-current Suzuki Vinson 500
- 2003-current Suzuki Eiger 400

Kolpin Powersports, Inc.
 205 N. Depot St., Fox Lake, WI
 Phone #: (877) 9KOLPIN or (920) 928-3118
www.kolpin.com
customerservice@kolpin.com