

# Polaris Sportsman 2" Receiver

Product Instructions | Part No: 85195



## Kit contents:

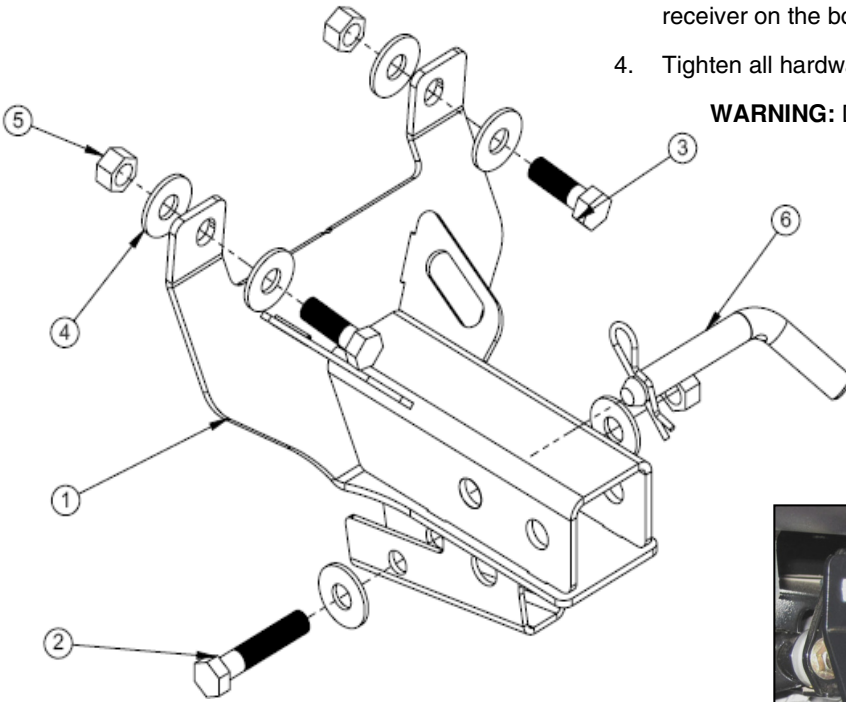
Item	Qty	Part Description
1	1	XP Hitch Weldment
2	1	Hex Bolt, Zinc Plated, 1/2-13 x 2.25" LG
3	2	Hex Bolt, Zinc Plated, 1/2-13 x 1.50" LG
4	6	Flat Washer, Zinc Plated, 1/2"
5	3	Hex Locknut, Zinc Plated, 1/2-13
6	1	Hitch Pin & R-Clip, Zinc Plated, 5/8" x 3.0"
7	1	Instruction Guide (not shown)

## Hitch Mounting Instructions:

**Note: If any hardware is missing, do not return to the store. Call us to help, Toll Free 1-877-956-5746.**

1. Slide hitch (item #1) into the rear 1-1/4" vehicle receiver.  
**Note, installation may be easier if certain items are removed from vehicle first.**
2. Install shorter bolts (item #3) and washers (item #4) thru the frame of the ATV. Secure using the Hex Nut (item #5).
3. Install longer bolt (item #2) and washers (item #4) thru the 1-1/4" receiver on the bottom side of the hitch and install locknut (item #5).
4. Tighten all hardware to specification.

**WARNING:** Do not over tighten hardware or damage can occur.



= T  
**1/2" FASTENER TORQUE:**  
50 ft. lbs. (67 Nm)

For additional assistance, please contact Kolpin customer service department at (877) 956-5746 or (763) 478-5800 or email [customerservice@kolpin.com](mailto:customerservice@kolpin.com)

## Use and Care Information:

- Do not exceed the manufacturers recommended towing capacity.
- Recommended to use Suspension Lock with DirtWorks systems.
- Check the accessory mounts frequently and retighten hardware if necessary.
- Replace this accessory with a new one if it is damaged.
- Kolpin hitches are not intended for on-road use.



Kolpin Outdoors, Inc. | 9955 59th Ave N | Plymouth, MN 55442

(877) 956-5746 or (763) 478-5800 | [www.kolpin.com](http://www.kolpin.com) | [customerservice@kolpin.com](mailto:customerservice@kolpin.com)



## **One Year Limited Warranty**

For the period of one (1) year from the purchase date, Kolpin will replace for the original purchaser, free of charge, any part or parts found upon examination by Kolpin to be defective in material, workmanship, or both.

All transportation costs incurred submitting product to Kolpin for warranty consideration must be borne by the purchaser. If Kolpin determines that the product must be returned to the factory for credit, please call 1-877-956-5746 for a Return Merchandise Authorization (RMA) number and shipping instructions.

This warranty does not apply to parts that have been damaged by accident, alteration, abuse, improper maintenance, normal wear, or other causes beyond the manufacturer's control. In order to protect you and your ATV, certain parts of the accessory system and/or hardware are designed to fail when the equipment is over-stressed. Parts that are lost due to loosening and improper maintenance are not covered under warranty. This warranty does not cover removal or reinstallation labor fees of the accessory system and related components.

Peripheral products such as engines, electric motors, and actuators may carry an original manufacturer's warranty. Most hardware is general in nature and is easily obtained locally. Be sure to replace with minimum metric class 8.8 specification.

**Kolpin Outdoors, Inc.**

**Telephone: (763)-478-5800**

**Toll Free: (877)-956-5746**

**Fax Number: (800)-245-7569**

**[www.kolpin.com](http://www.kolpin.com)**

**Email: [customerservice@kolpin.com](mailto:customerservice@kolpin.com)**