



# PLOW MOUNT KIT

FOR ARCTIC CAT WILDCAT

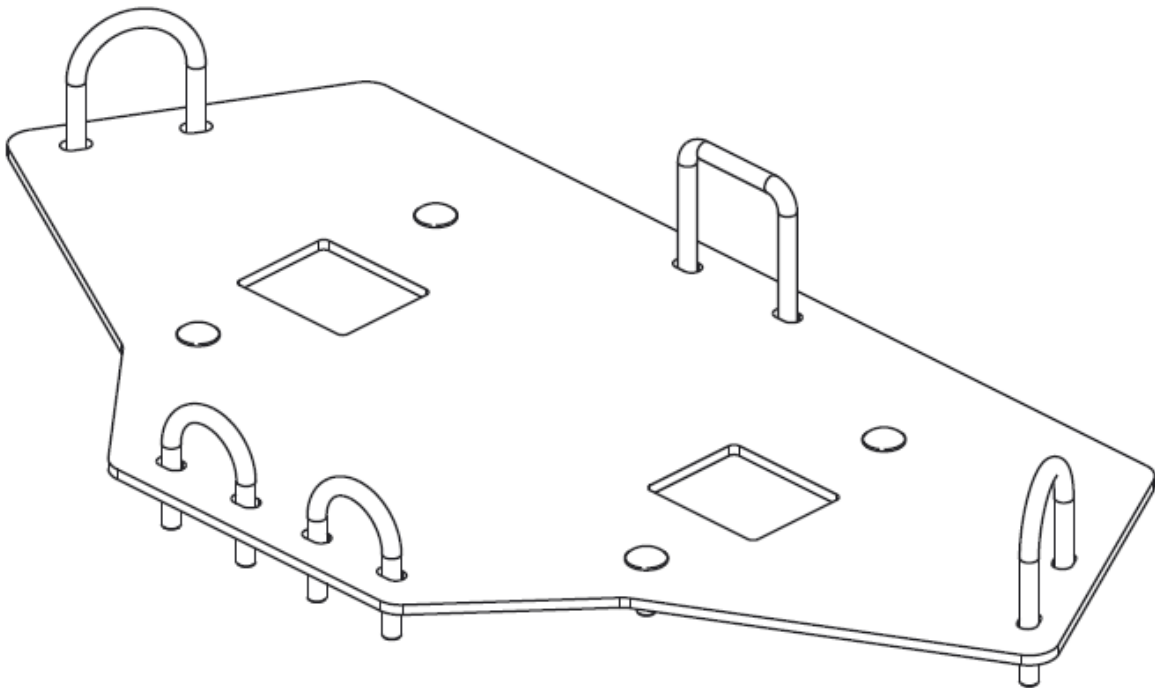
P/N 34-8020

ASSEMBLY / OWNERS MANUAL

Application

PLOW PUSH FRAME NO. 34-0000 or 34-0070

Before you begin, please read these instructions and check to be sure all parts and tools are accounted for. The following instructions contain details required to install and service the contents of this kit.



# OPERATING INSTRUCTIONS

Congratulations! You've just purchased the most durable plow component in the industry. Kolpin plow components work great for summer or winter plowing. With proper care and maintenance, your Kolpin plow system will last for years to come!

<b>NOTICE</b>
<b>Plow operation requires additional components for operation: <i>Kolpin Plow Blade, Kolpin Plow Push Frame, High Rise Plow Push Frame, Winch Kit</i> *</b>
<i>*These components may be specific to your vehicle.</i>



Please read and understand all assembly instructions, notices and warnings before assembling and operating your Kolpin plow system.

## Follow these guidelines to ensure satisfactory operation:

- Read this manual and your ATV/ UTV operators manual before use.
- Periodically check for wear and tightness of all fasteners. Replace or re-torque fasteners as necessary.
- Before first use, set plow in the furthest right or left angled position to check for interference with the vehicle.
- Operate with extreme caution on slopes and rough terrain. Be familiar with the area before you plow.
- Be aware of immovable objects that could be hidden in the area you are plowing.
- To avoid damage when pushing snow into a pile, reverse direction before raising the plow blade.
- Do not ram the plow blade into piles of snow.
- For best results, set the suspension preload of your ATV/ UTV to the stiffest setting.
- To reduce steering effort and increase mobility, set the air pressure of your tires to the maximum pressure specification.
- The plow skids are adjustable. General skid setting is even with the plow wear bar bottom edge, higher settings reduce the chance of rocks and gravel from being collected.
- To increase traction during plow operation, operators can try: Securing weight to the ATV/ UTV for additional tire downforce, reducing tire air pressure, or installing tire chains.

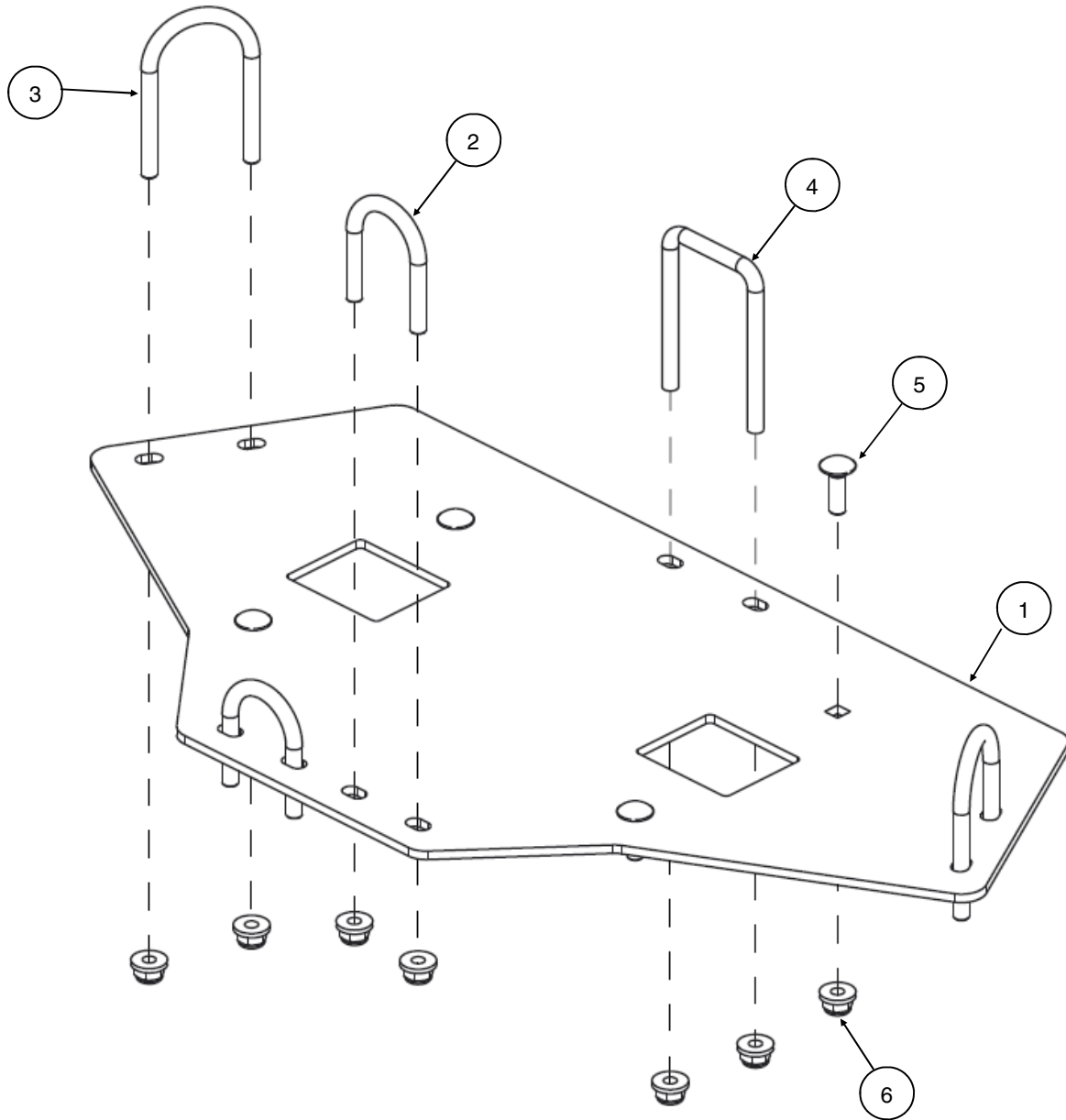
## SAFETY INFORMATION

Our plow systems were designed with your safety in mind. Please read and understand all Cautions, Notices and Warnings in this manual before you begin. In order to protect you and your ATV/UTV, certain parts of the plow system and/or hardware are designed to fail when the equipment is over-stressed.

 <b>DANGER</b> 
<b>TO AVOID SERIOUS INJURY OR DEATH:</b>
1. <b>DO NOT EXCEED 5 MPH (8 KMH) WITH BLADE INSTALLED.</b>
2. <b>OPERATE WITH EXTREME CAUTION ON SLOPES, STEEP GRADES, AND ROUGH TERRAIN.</b>
3. <b>ALLOW NO RIDERS ON BLADE OR ATV/UTV WHILE MOVING OR STATIONARY.</b>
4. <b>KEEP BYSTANDERS AWAY FROM THE BLADE OR ATV/UTV WHILE MOVING OR STATIONARY.</b>
5. <b>WHEN PUSHING HEAVY MATERIAL, DIRECTION CONTROL MAY BECOME DIFFICULT.</b>
6. <b>BEFORE ADJUSTING BLADE: STOP ATV/UTV ENGINE; SET AND LOCK BRAKES; RAISE AND LOCK BLADE IN UP POSITION. DO NOT ATTEMPT TO RAISE BLADE BY HAND; USE THE LIFT MECHANISM ONLY.</b>
7. <b>LOWER BLADE TO DOWN POSITION WHEN BLADE AND ATV/UTV ARE NOT IN USE.</b>
8. <b>READ BLADE'S INSTRUCTION SHEETS AND ATV/UTV OWNER MANUAL.</b>

**Kit Contents:**

Item	Qty	Part Description	Part Number
1	1	Wildcat Mount Plate	-
2	2	Round U-Bolt, Zinc Plated, M8-1.25 x 65mm	-
3	2	Round U-Bolt, Zinc Plated, M8-1.25 x 90mm	-
4	1	Square U-Bolt, Zinc Plated, M8-1.25 x 93mm	-
5	4	Carriage Bolt, Zinc Plated, M8-1.25 x 25mm LG	-
6	14	Flange Locknut, Zinc Plated, M8-1.25	-
7	1	Instruction Guide (not shown)	-



## BEFORE YOU BEGIN:

- Your Kolpin accessory is exclusively designed for your vehicle
- Please read and understand all instructions
- Verify all parts and tools are accounted for
- To ensure a satisfactory installation, follow all steps correctly and in the sequence described
- Keep these instructions for future reference or for informational requests
- To facilitate installation, make sure that your vehicle is clean and free of debris
- All directions referring to right and left are when the rider is sitting on the machine
- The plastic skid plate will need to be modified to be reinstalled on the vehicle.

## TOOLS REQUIRED:

- Screwdriver set
- Basic metric wrench and socket sets
- Drill or cutting tools for plastic

## APPROXIMATE ASSEMBLY TIME: 30 minutes

Note: Removal and modification of the plastic skid plate is recommended.

Note: If any hardware is missing, do not return to the store. Call us to help, Toll Free 1-877-956-5746.

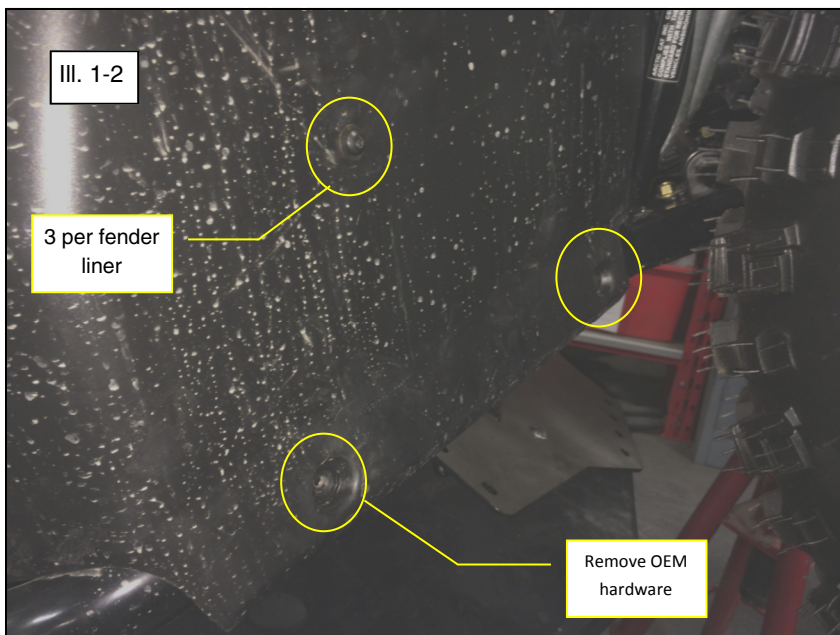
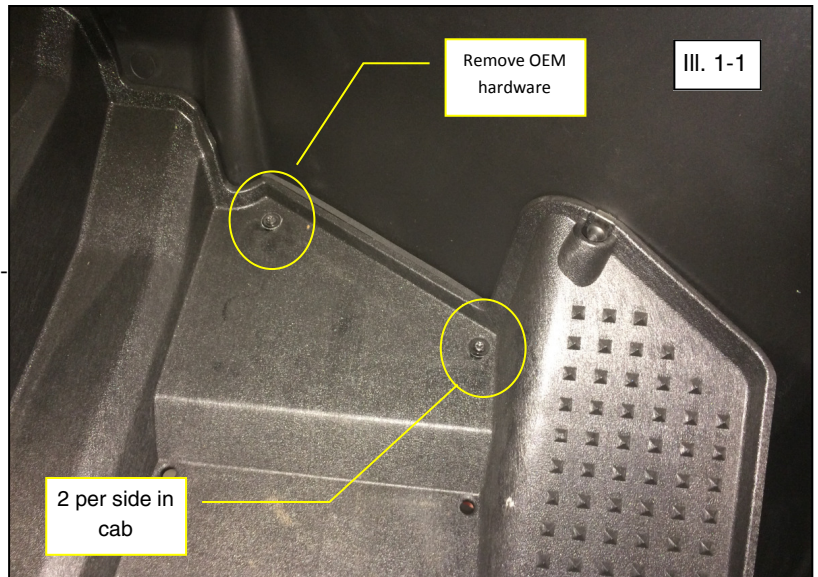
<b>SPARE KITS</b>		<b>Hardware kit P/N 34-0011</b>
<b>Item</b>	<b>Description</b>	
2	Round U-Bolt, Zinc Plated, M8-1.25 x 65mm	2x
3	Round U-Bolt, Zinc Plated, M8-1.25 x 90mm	2x
5	Carriage Bolt, Zinc Plated, M8-1.25 x 25mm LG	8x
6	Flange Locknut, Zinc Plated, M8-1.25	12x
-	Hex Locknut, Zinc Plated, M8-1.25	4x
-	Spring Lock Washer, Zinc Plated, M8	2x
-	Flat Washer, Zinc Plated, M8	4x
-	Hex Bolt, Zinc Plated, M8-1.25 35mm LG	2x
-	Hex Bolt, Zinc Plated, M8-1.25 90mm LG	2x
-	Hex Bolt, Zinc Plated, M8-1.25 80mm LG	2x
-	Hex Bolt, Zinc Plated, M10-1.5 x 25mm LG	4x
-	Spring Lock Washer, Zinc Plated, M10	4x
-	Flat Washer, Zinc Plated, M10	4x

### Spare Kit Notes:

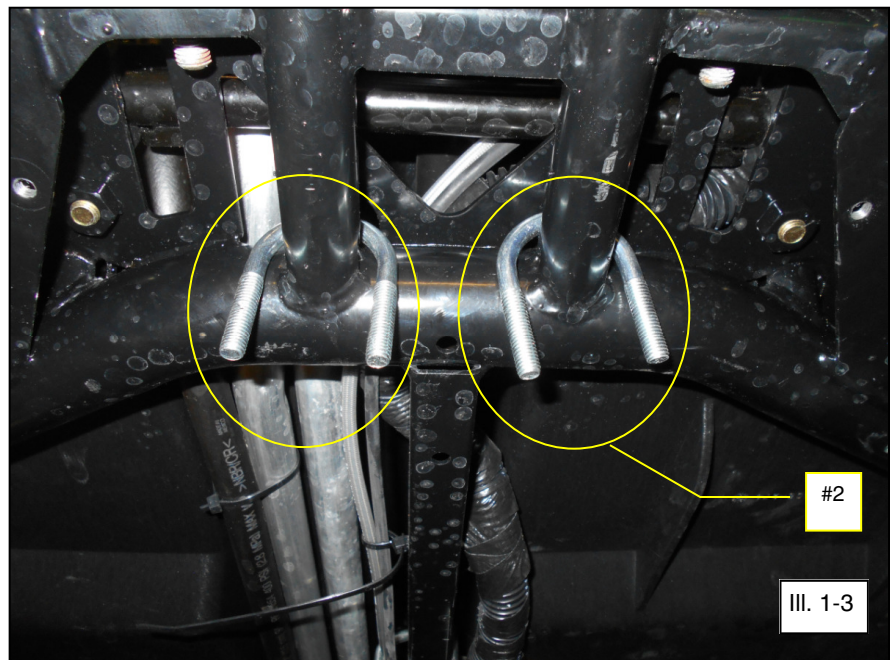
- Spare kits may contain extra hardware that is used for other mount kits. Extra hardware can be discarded.
- U-bolts supplied in spare kits may be longer than original and may need to be cut to size.

**Installation Prep:**

1. Remove the OEM screws holding the vehicle skid plate, the ones holding the front part of the floor (2 per side) and the ones holding the fender liners (3 per side). This will allow for access to install the larger u-bolts in between the frame and bodywork parts. The screws are located both inside the cab and behind the front wheels as shown. Save OEM screws for reinstall later. (See illustrations 1-1 and 1-2).

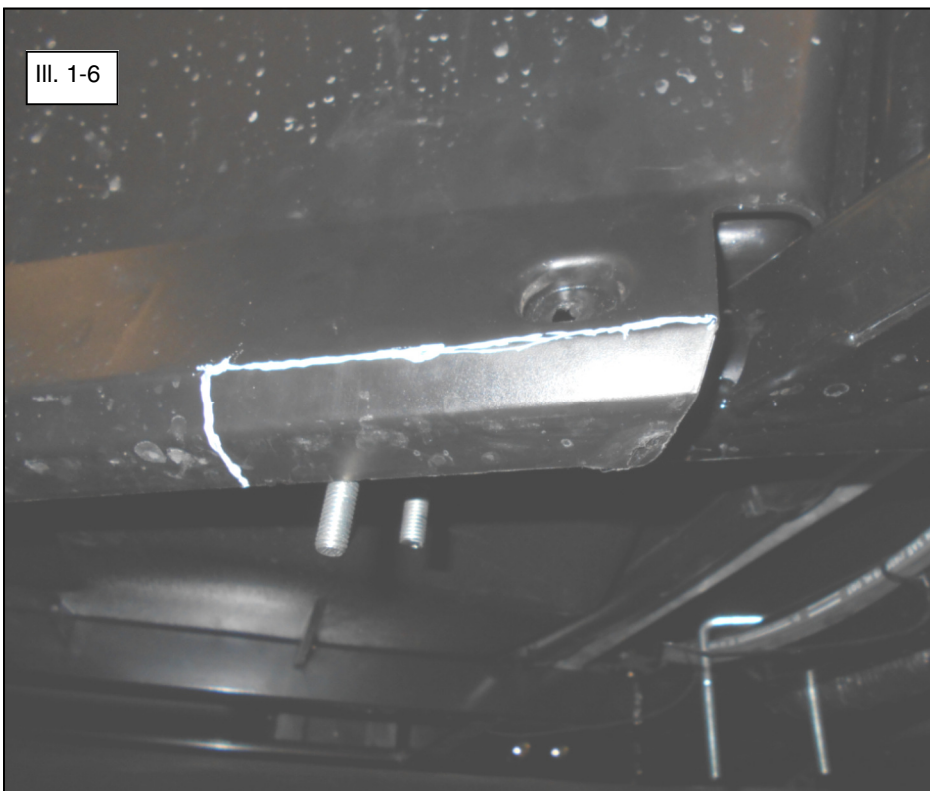
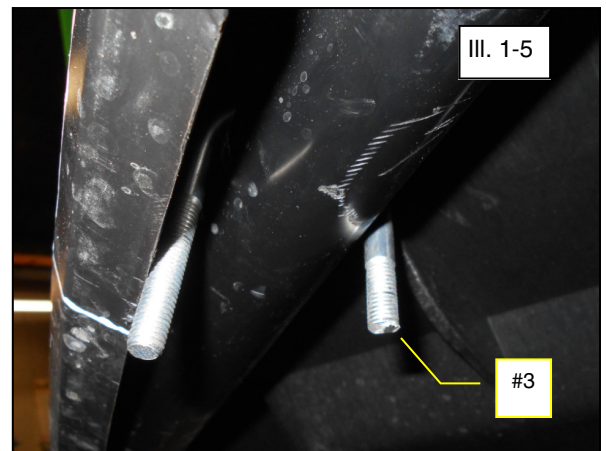
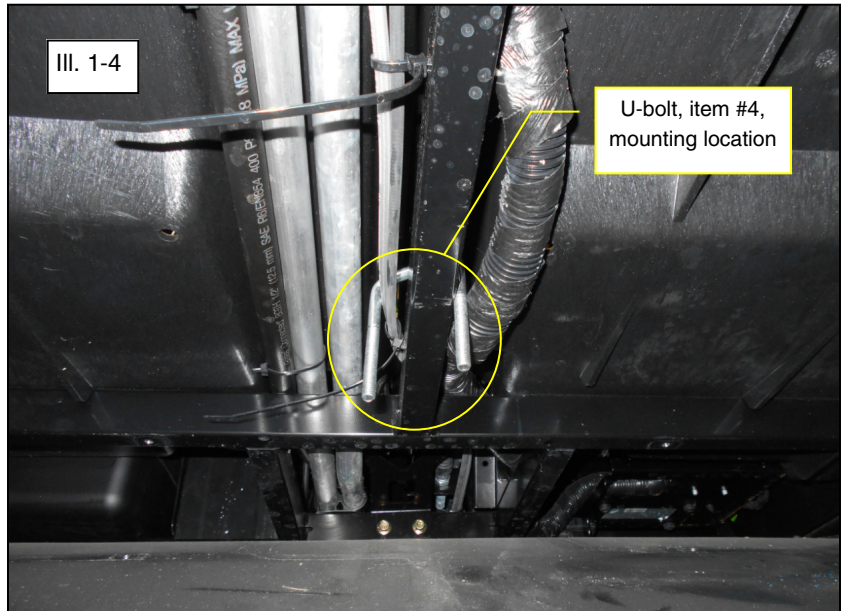


2. From the underside of the vehicle, place the small u-bolts (item #2) around the frame in the locations as shown. (See illustration 1-3).



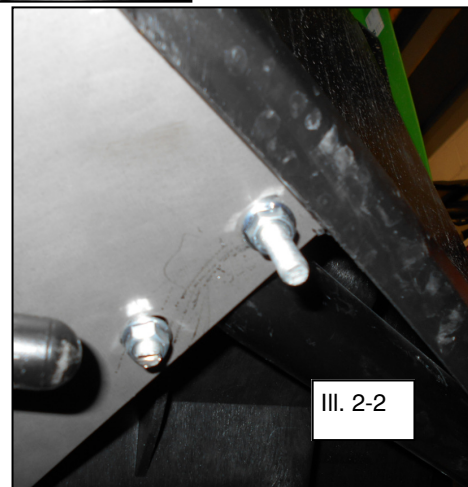
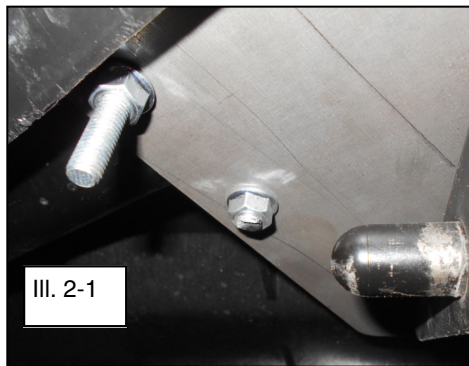
**Installation Prep (continued):**

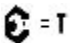
3. From under the vehicle, use the mount plate (item #1) as a pattern to locate the rear u-bolt locations. Position the mount plates front four holes onto the two small u-bolts.
4. Based on the mount plate, position and place the larger u-bolts (items #3, #4) into place around the frame. The square u-bolt is easy to put into position as shown. Make sure u-bolt doesn't pinch cables. (See illustration 1-4).
5. For the larger round u-bolts (item #3), lift the plastic floor board and fender liners to gain access to place into position. (See illustration 1-5).
6. Once the u-bolts are all into place, mark and drill the skid plate and cut the fender liners as shown. Use a 3/8" to 1/2" bit to create an oversized hole that will allow some relief when installing hardware. **Note, a high speed cutting tool (like a Dremel) with a cutting bit will also work.** (See illustration 1-6).

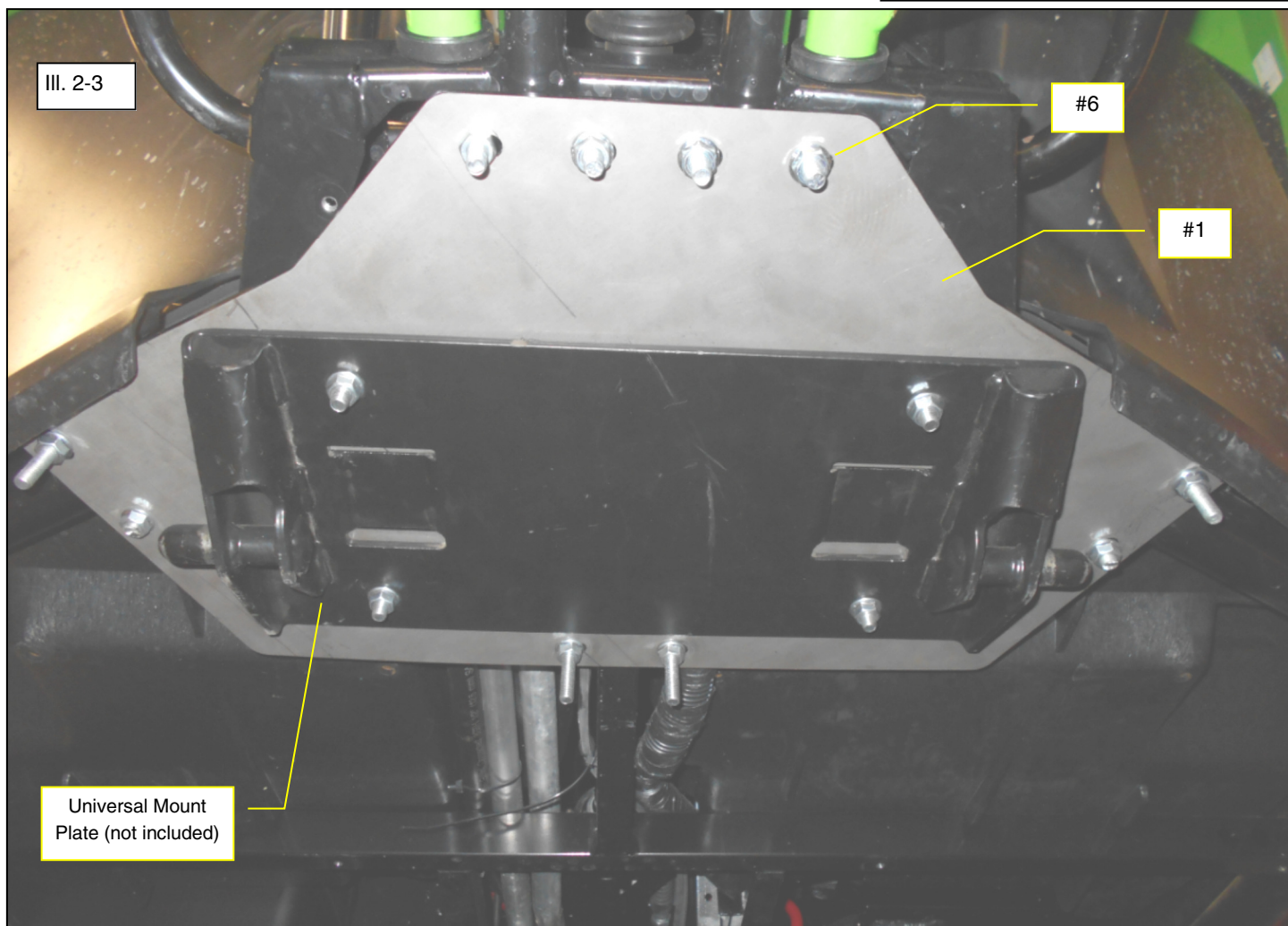


**Mount Plate Installation:**

5. Insert the M8 carriage bolts (item #5) thru the mount plate (item #1).
6. Reinstall the skid plate and install the mount plate (item #1) onto the u-bolts. Fasten plate into position with locknuts (item #6).
7. Tighten the M8 locknuts (item #6) for securing the u-bolts (items #2, #3, #4). Use caution to not overtighten u-bolts. Excessive u-bolt length can be trimmed 3-4 threads past nut locking patch (See Illustrations 2-1 and 2-2).
8. The universal mount plate, not included in kit, will be attached to the Wildcat mount plate (item #1) as shown. The M8 carriage bolts will fasten the universal plate with M8 locknuts (item #6). Tighten to specification. (See illustration 2-3).
9. Re-install the OEM hardware screws for floorboard inside cab and the fender liners.



 = T
<b>8MM FASTENER TORQUE:</b> 17 ft. lbs. (23 Nm)





## **One Year Limited Warranty**

For the period of one (1) year from the purchase date, Kolpin will replace for the original purchaser, free of charge, any part or parts found upon examination by Kolpin to be defective in material, workmanship, or both.

All transportation costs incurred submitting product to Kolpin for warranty consideration must be borne by the purchaser. If Kolpin determines that the product must be returned to the factory for credit, please call 1-877-956-5746 for a Return Merchandise Authorization (RMA) number and shipping instructions.

This warranty does not apply to parts that have been damaged by accident, alteration, abuse, improper maintenance, normal wear, or other causes beyond the manufacturer's control. In order to protect you and your ATV, certain parts of the plow system and/or hardware are designed to fail when the equipment is over-stressed. Parts that are lost due to loosening and improper maintenance are not covered under warranty. This warranty does not cover removal or reinstallation labor fees of the plow system and related components.

Peripheral products such as engines, electric motors, and actuators may carry an original manufacturer's warranty. Most hardware is general in nature and is easily obtained locally. Be sure to replace with minimum metric class 8.8 specification.

**Kolpin Outdoors, Inc.**

**Telephone: (763)-478-5800**

**Toll Free: (877)-956-5746**

**Fax Number: (800)-245-7569**

**[www.kolpin.com](http://www.kolpin.com)**

**Email: [customerservice@kolpin.com](mailto:customerservice@kolpin.com)**