

AUDIO ROOF KIT



P/N 2882064, 2882065, 2882066

APPLICATION

Verify accessory fitment at Polaris.com.

BEFORE YOU BEGIN

Read these instructions and check to be sure all parts and tools are accounted for. Please retain these installation instructions for future reference and parts ordering information.

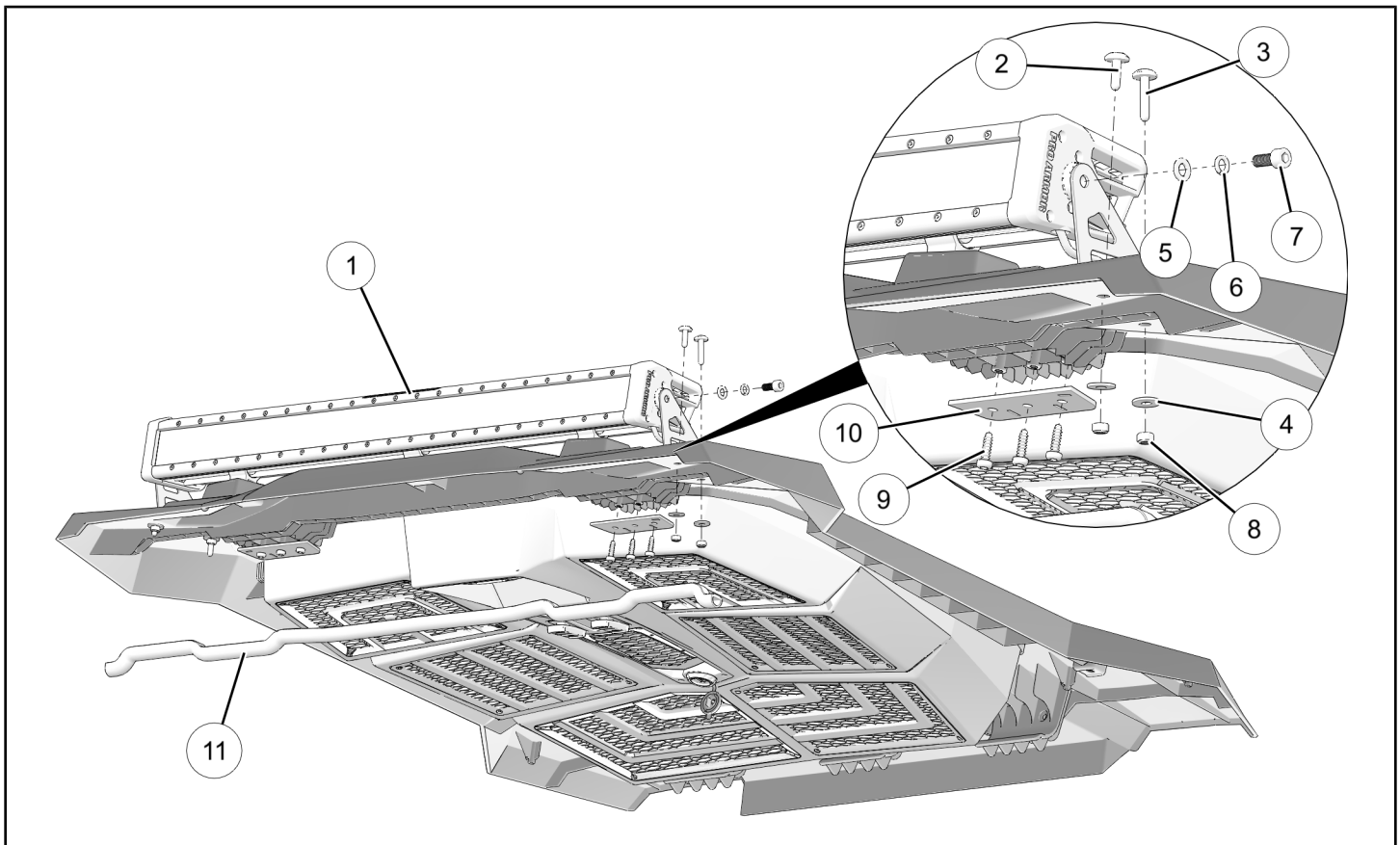
KIT CONTENTS

This kit contains parts for installation of the audio roof only. Prior installation of one of the following Battery Connection Kits is also required (sold separately):

- PN 2879862, 2881551, or equivalent (2 passenger RZR®)
- PN 2880055, 2881646, or equivalent (4 passenger RZR®)

Kit PNs 2882066 and 2882065 include:

Kit PN 2882066 shown; Kit PN 2882065 similar except as noted below.

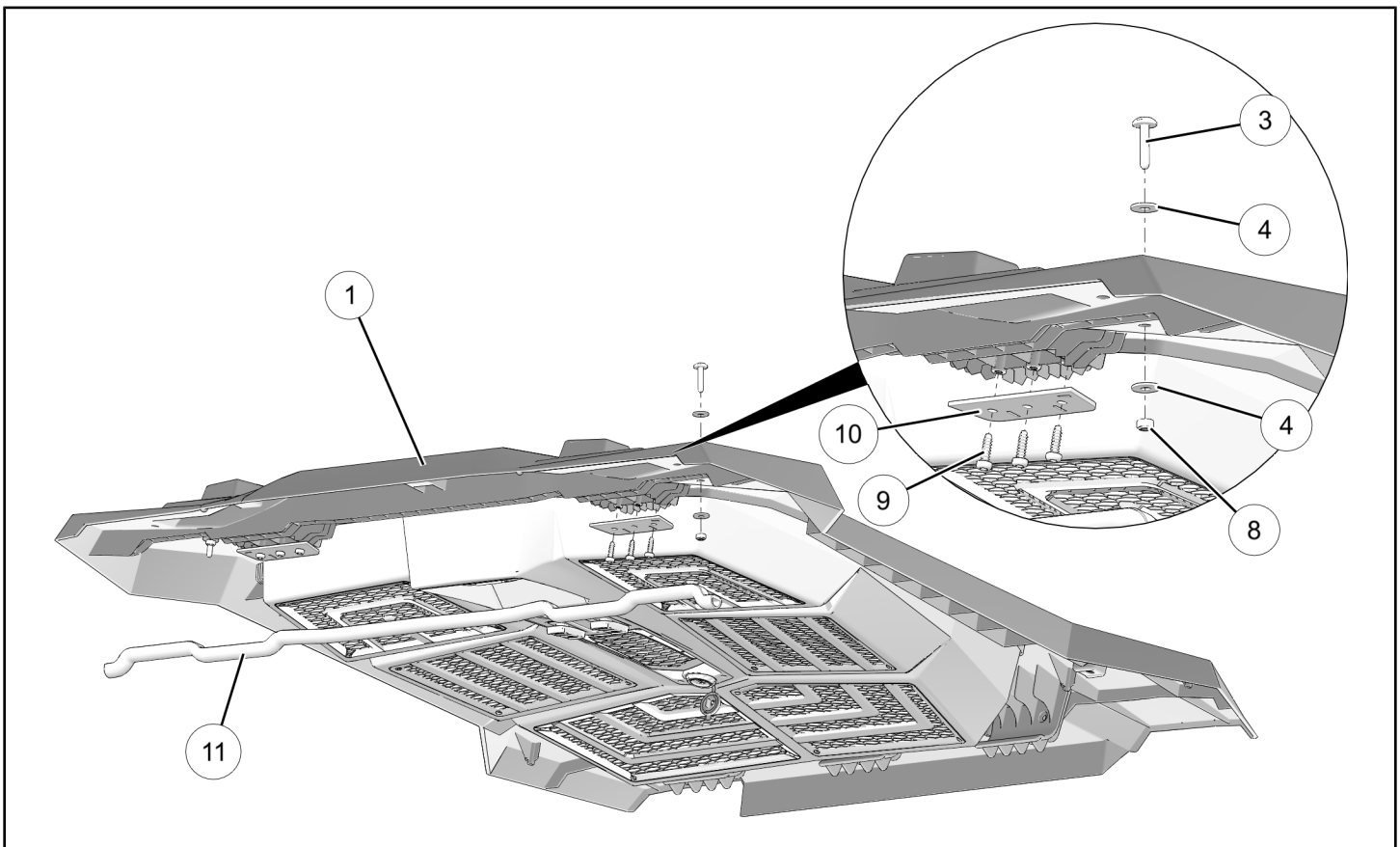


REF	QTY	PART DESCRIPTION	PART NUMBER
1	1	Audio Roof, S10-L (Kit PN 2882066 only; includes items 2-11 below) Audio Roof, S8-L (Kit PN 2882065 only; includes items 2-11 below) (not shown)	- -
2*	2	. Screw, Torx® Truss Head - M8	-

REF	QTY	PART DESCRIPTION	PART NUMBER
3*	2	. Screw, Torx® Truss Head - M8	-
4*	4	. Washer, Flat - M8	-
5*	2	. Washer, Flat - M8	-
6*	2	. Washer, Split - M8	-
7*	2	. Screw, Socket Head - M8	-
8*	4	. Nut, Lock - M8	-
9*	6	. Screw, Torx® Truss Head, High/Low - M6 X 1.0 X 25	-
10*	2	. Plate, Backing	-
11	1	. Seal, Bulb	-
	1	Instructions	9927534

Items marked (*) are included in Hardware Kit PN 2206636.

Kit PN 2882064 includes:



REF	QTY	PART DESCRIPTION	PART NUMBER
1	1	Audio Roof, S4 (includes items 3, 7–11 below)	-
2	-	. (unused)	-
3*	2	. Screw, Torx® Truss Head - M8	-
4*	4	. Washer, Flat - M8	-

REF	QTY	PART DESCRIPTION	PART NUMBER
5	-	. (unused)	-
6	-	. (unused)	-
7	-	. (unused)	-
8*	2	. Nut, Lock - M8	-
9*	6	. Screw, Torx® Truss Head, High/Low - M6 X 1.0 X 25	-
10*	2	. Plate, Backing	-
11	1	. Seal, Bulb	-
	1	Instructions	9927534

Items marked (*) are included in Hardware Kit PN 2206636. Additional hardware included, but not used with Kit PN 2882064.

TOOLS REQUIRED

- Safety Glasses
- Drill
- Drill Bit: 3/8 inch (9 mm)
- Screwdriver Set, Torx®
- Socket Set, Metric

IMPORTANT

Your Audio Roof Kit is exclusively designed for your vehicle. Please read the installation instructions thoroughly before beginning. Installation is easier if the vehicle is clean and free of debris. For your safety, and to ensure a satisfactory installation, perform all installation steps correctly in the sequence shown.

ASSEMBLY TIME

Approximately 30 minutes

NOTE

Additional time may be required for optional steps, or to accommodate other installed accessories.

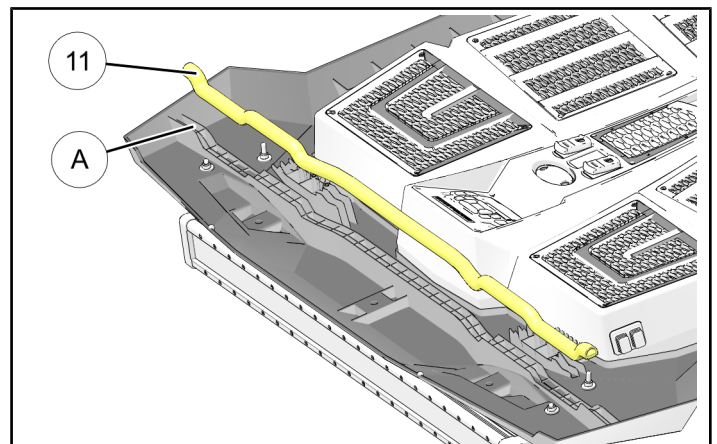
INSTALLATION INSTRUCTIONS

NOTE

Polaris recommends two people assemble and install this kit.
Installation for Audio Roof Kit PN 2882066 shown; PNs 2882065 and 2882064 similar except as noted.

1. Shift vehicle transmission into "PARK". Turn key to "OFF" position and remove from vehicle.
2. Remove driver's seat and disconnect black negative (-) cable from battery.
3. Gain Access.
 - a. Remove hood.
 - b. Remove windshield (if installed).

4. Clean bulb seal channel (A) at front of audio roof as required to ensure proper seal adhesion, then install bulb seal (11). Trim seal as required, then press firmly into place.

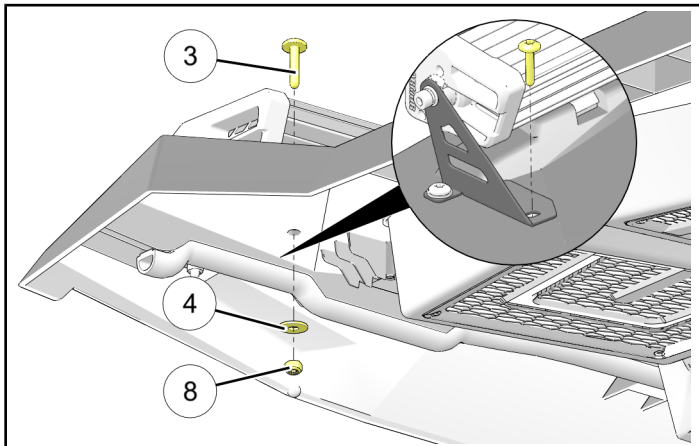


5. If installing Audio Roof Kit PN 2882064, proceed to Step 6. Otherwise, perform the following:

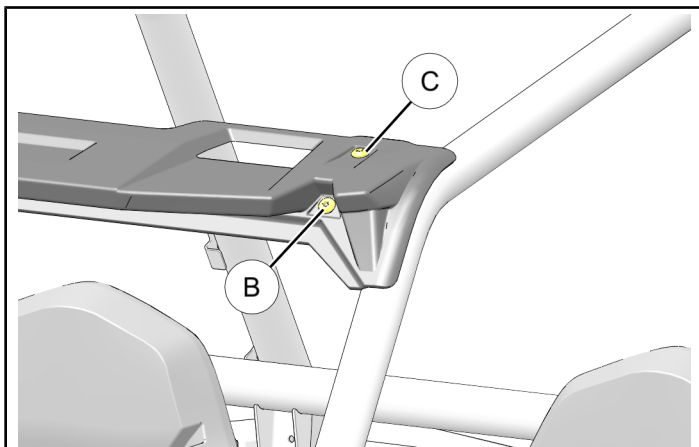
Remove screw ③, washer ④, and nut ⑧ from REAR side of light bar bracket. Repeat for RH side. Retain all hardware.

IMPORTANT

Do NOT remove screw on FRONT side of light bar bracket.



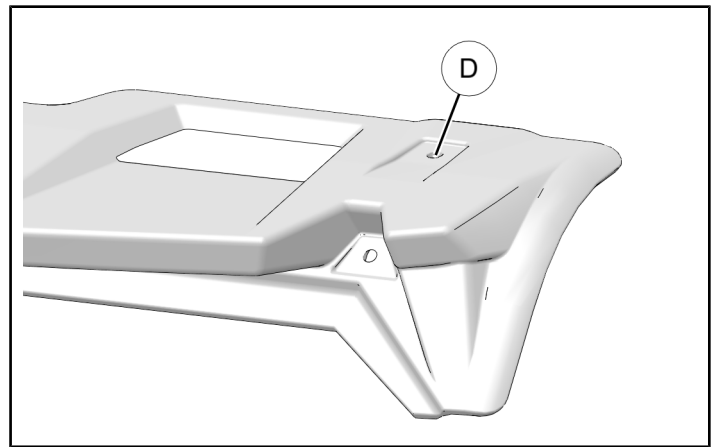
6. Enlarge visor fastener holes.
- Remove screw ⑥ and ⑦ from visor as shown. Repeat for RH side, then remove visor. Retain two screws ⑥. Discard two screws ⑦.



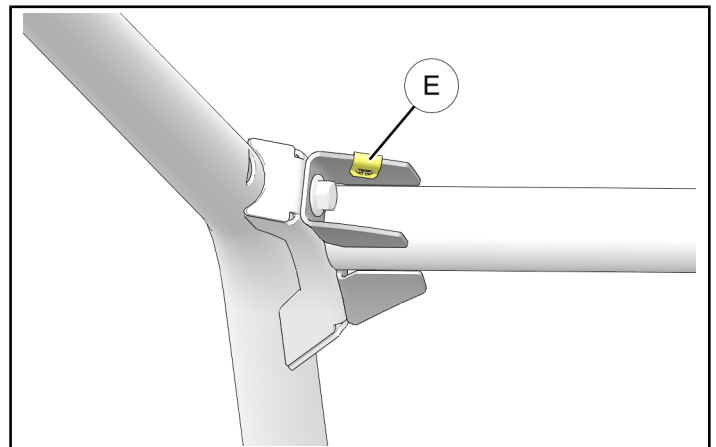
- Enlarge hole ⑩ in visor using 3/8 inch (9 mm) diameter drill bit. Repeat for RH side.

IMPORTANT

Do NOT enlarge corresponding holes in metal ROPS brackets. ROPS holes are already proper size to accommodate new fasteners.



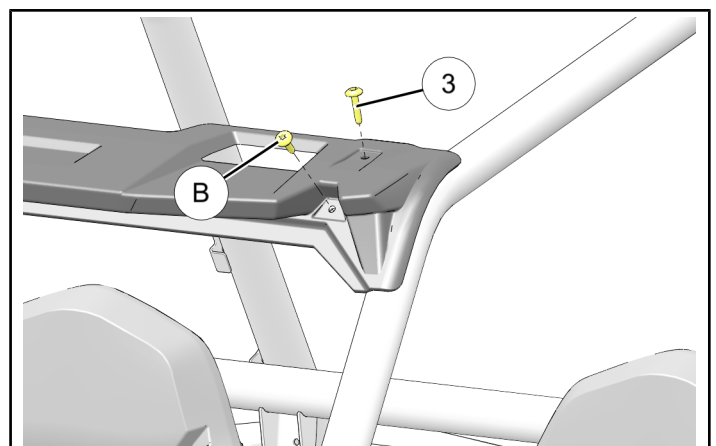
- Remove and discard clip nut ⑤ from rear side of ROPS corner bracket. Repeat for RH side.



- Lay visor on ROPS, then temporarily insert two screws ③ through UPPER REAR visor holes into ROPS corner bracket. Do not install audio roof ①, washers ④, or nut ⑧ at this time.

NOTE

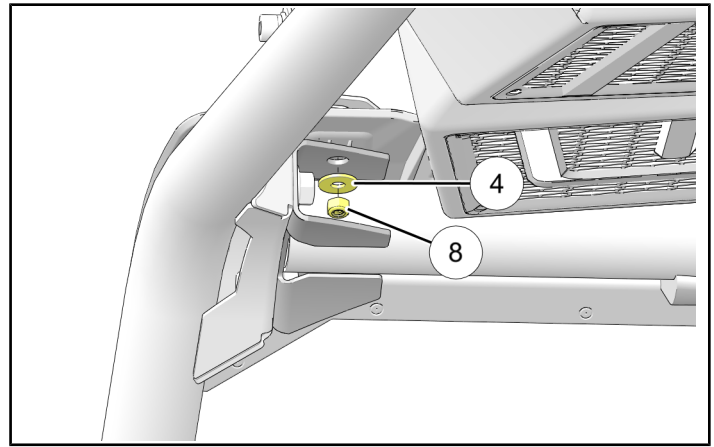
Screws ③ were removed in Step 5, or are located in hardware kit for Audio Roof Kit PN 2882064. Purpose of screw installation is to ensure proper visor alignment during next step. LH shown; RH opposite.



- e. Reinstall two retained screws ② through LOWER FRONT visor holes into ROPS as shown in previous step. Torque to specification.

TORQUE

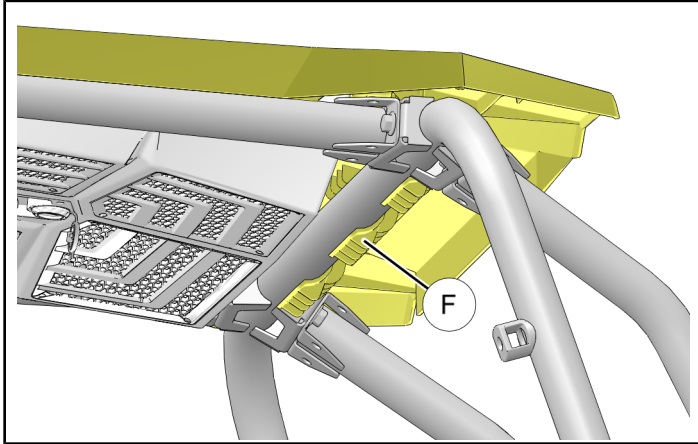
8 ft. lbs. (11 Nm)



- f. Remove two screws ③ from UPPER REAR visor holes.

7. Install audio roof.

- a. Lay audio roof ① on top of ROPS, then slide roof forward until rear hooks ⑥ fully engage B-pillar cross-member.



- c. Install backing plate ⑩ to roof using three screws ⑨. Repeat for opposite side. Torque to specification.

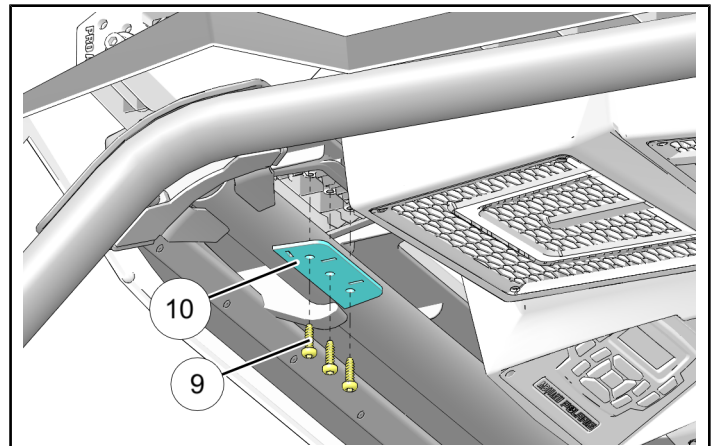
IMPORTANT

Torque is in INCH-POUNDS. Do NOT over-torque fasteners.

TORQUE

10 in. lbs. (1.1 Nm)

- b. Loosely install front of roof to ROPS using screw ③, washer ④, and nut ⑧ at rear side of light bar bracket. Repeat for opposite side. Torque to specification.

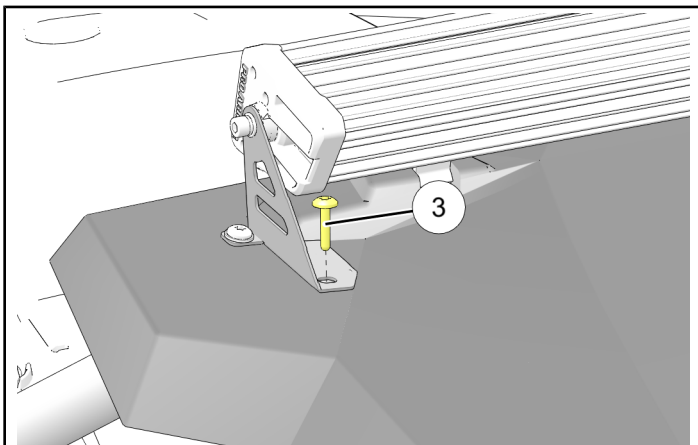


TORQUE

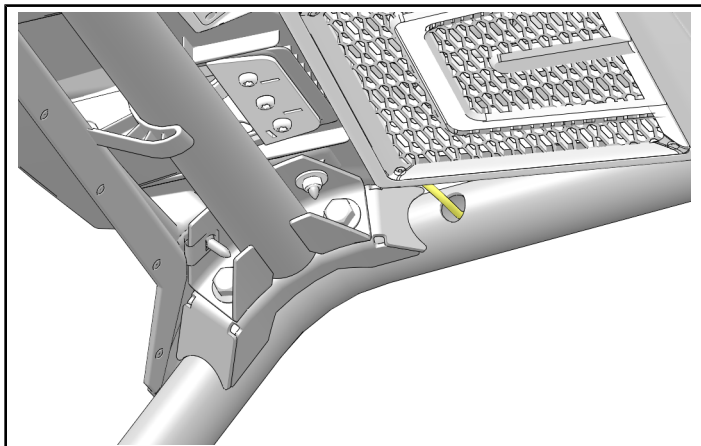
16 ft. lbs. (22 Nm)

NOTE

Audio Roof Kit PN 2882064: Installation similar except for absence of light bar and associated brackets, and addition of second washer ④ under screw head.

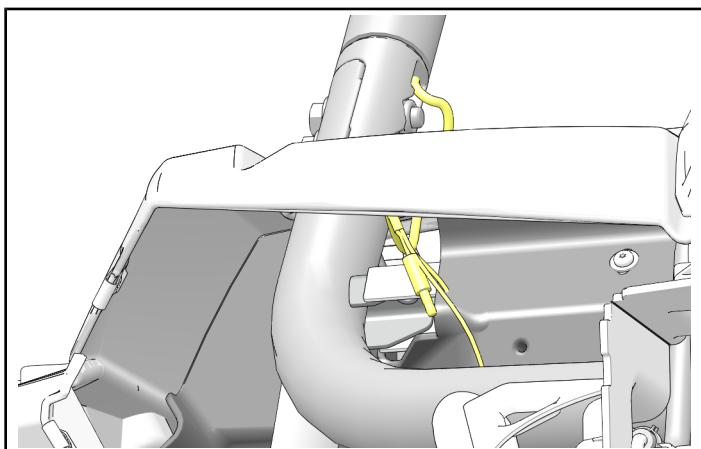


8. Install electrical harness.
 - a. RED WIRE: Detach in-line fuse at bullet connectors. Grasp connectors, NOT wires.
 - b. Route electrical harness bullet connector and two ring terminals into hole at top of passenger side A-pillar, down ROPS, out of welded coupler at base of pillar, and into under-hood compartment (forward side of firewall).



NOTE

Access to under-hood compartment is through cutout in firewall on inboard side of ROPS coupler. Front fascia not shown for clarity.



FEEDBACK FORM

A feedback form has been created for the installer to provide any comments, questions or concerns about the installation instructions. The form is viewable on mobile devices by scanning the QR code or by clicking [HERE](#) if viewing on a PC.

- c. RED WIRE: Reconnect in-line fuse at bullet connectors.
- d. Connect electrical harness ring terminals to terminal block:
 - **RED** harness wire: To post with existing RED battery connection cable (unswitched 12V POS); post may be identified as “BAT”
 - **ORANGE** harness wire: To post with existing ORANGE wire (accessory switched 12V POS); post may be identified as “ACC”
 - **BLACK** harness wire: To post with existing BLACK battery connection cable (12V NEG); post may be identified as “GND”
9. Restore access.
10. Reconnect black negative (-) cable to battery and reinstall seat.

FEEDBACK FORM

