

Block Heater Installation Instructions

Kit PN 2876168 - 110 volt; 2876200 - 220 volt



POLARIS
The Way Out.®

Application

All Polaris FS/FST models

Before you begin, it is very important that you read and understand these instructions. Make sure you follow them exactly. Make certain all parts and tools are accounted for. Please retain these installation instructions for future reference and parts ordering information.

Kit Includes:

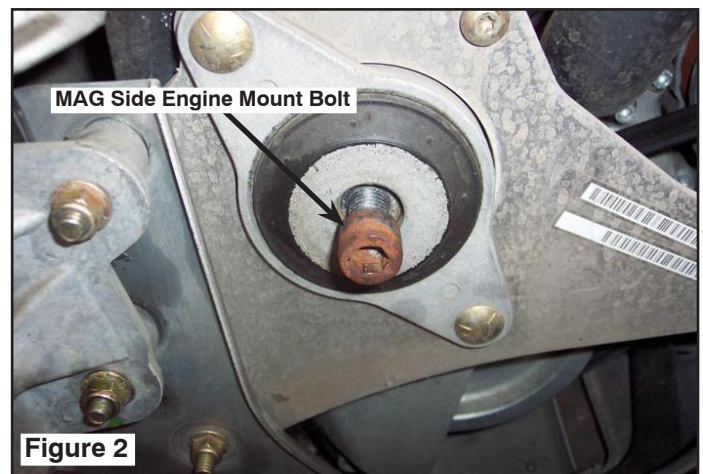
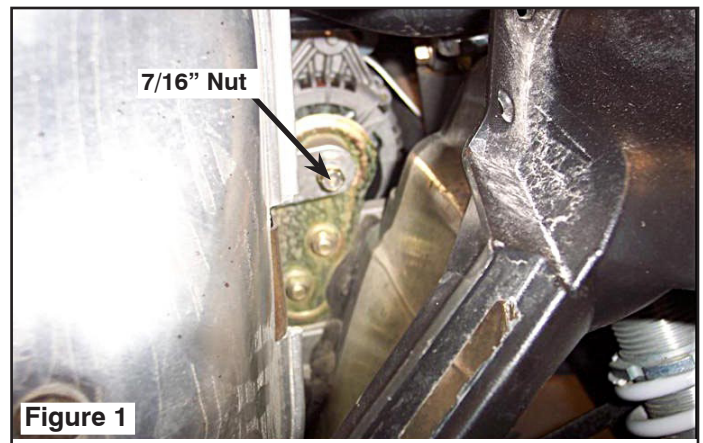
<u>Qty.</u>	<u>Part Description</u>	<u>Part Number</u>
1	Block Heater Pad w/cord	N/A
1	Plastic Squeegee	N/A
1	Sand Paper Square	N/A
2	Panduit	N/A
1	P-Clip	7080367
1	Instructions	9921026

You will need to supply:

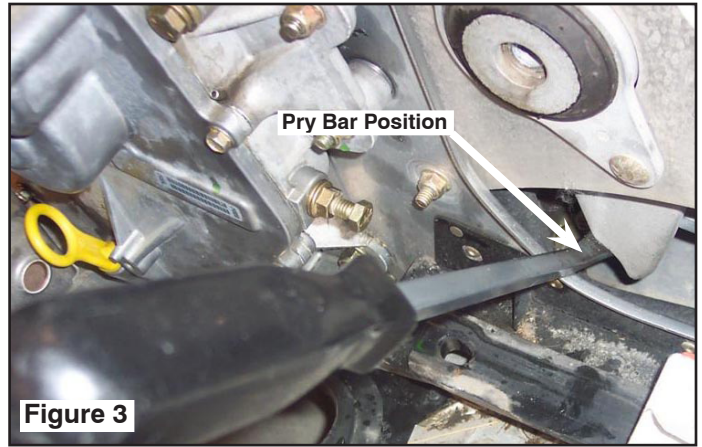
3/8" Allen Socket	Pry Bar
7/16" Hex Socket	271 Red Loctite®
3/8" Hex Socket	10" Extension
3/8" Ratchet	Exhaust Spring Removal Tool
1/2" Ratchet or Breaker Bar	Torque Wrench
Engine hoist with lifting chain (optional)	

Instructions

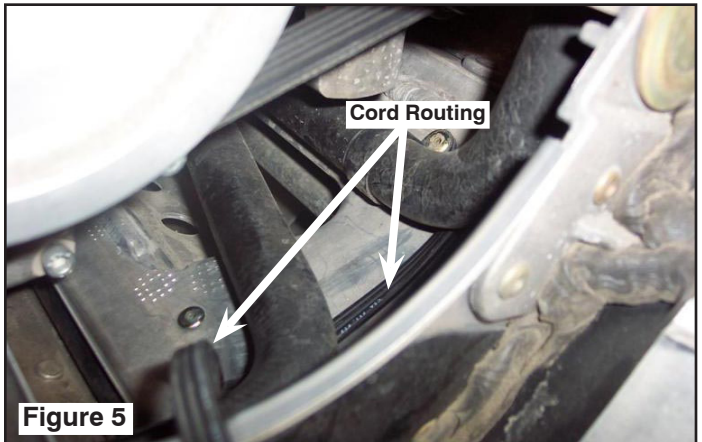
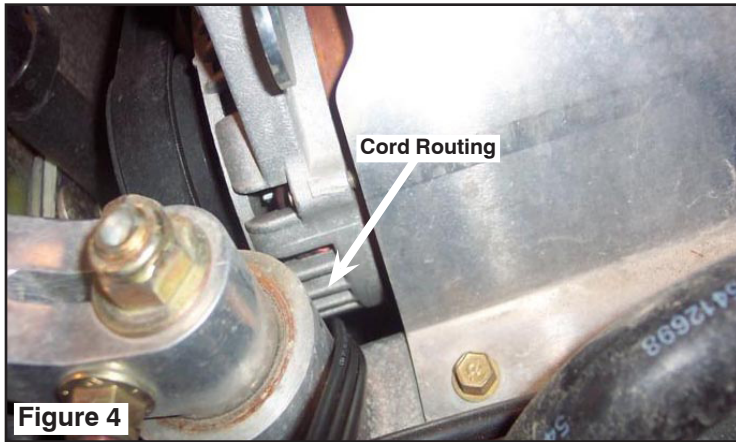
1. Open the hood and remove the exhaust side panel.
2. Remove the 7/16" nut in front of the exhaust silencer (Fig. 1), the two exhaust springs holding the silencer to the chaincase, and the three springs holding the headpipe to the manifold.
3. Remove the silencer and headpipe elbow as one piece.
4. Using the 3/8" Allen socket, remove the MAG side engine mount Allen bolt. (Fig. 2)



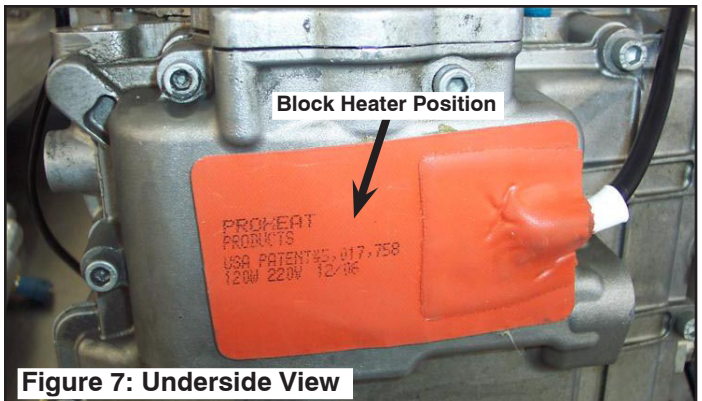
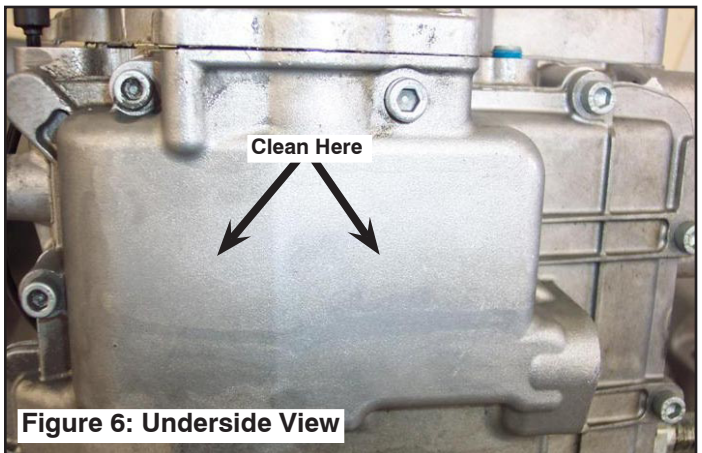
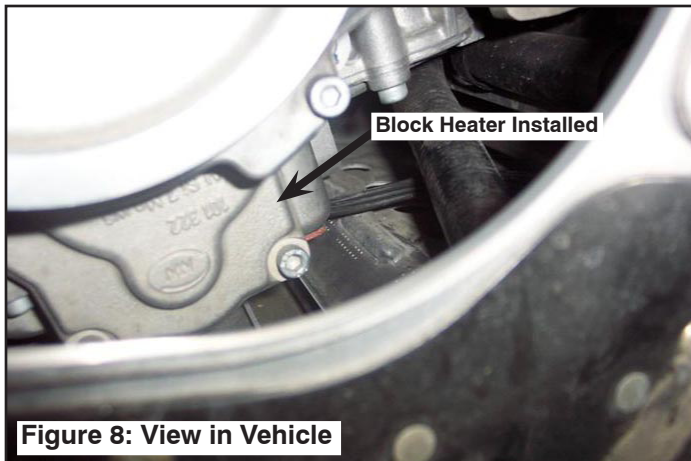
5. Safely raise the engine approximately 1.5 inches using a chain hoist attached to spring tab on exhaust manifold. If a hoist is unavailable, use a pry bar on the MAG side engine mount casting to raise the engine. (Fig. 3)



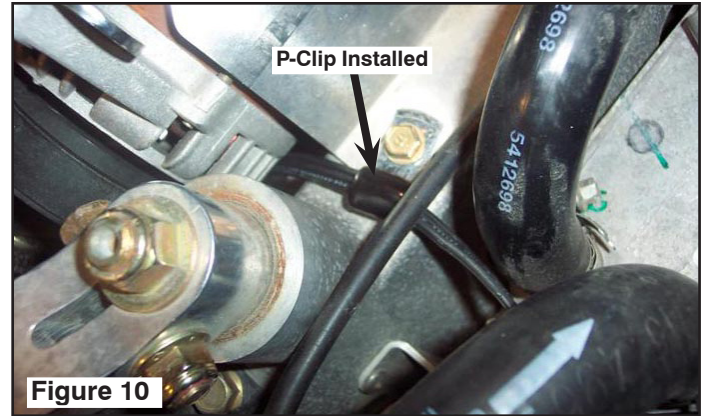
6. Route heater element down in front of alternator and under both oil hoses. (Fig. 4, 5) Take care to not bend or damage the heater element.



7. Apply acetone or a similar evaporating cleaning product to a clean shop towel, reach under engine and thoroughly clean the section of oil pan that the block heater will adhere to. (Fig. 6,7,8)



8. Carefully peel the backing off the heater element and apply the element to the oil pan. Be sure to press the element onto pan firmly so any air trapped in the glue is released. (Fig. 9)
9. Check over the electrical cord routing and make adjustments as necessary. Cord routing should be at a safe distance from any moving components and exhaust heat.
10. Install the P-clip (P/N 7080367) onto cord near alternator heat shield and use the closest heat shield fastener to secure the P-clip. (Fig. 10)



11. Coil the electrical cord in a convenient location in front nosepan.
12. Lower the engine and install the MAG side engine mount Allen bolt with 271 Red Loctite® applied to the threads. Torque to 70 ft. lbs.
13. Reinstall the exhaust silencer and headpipe elbow. Torque the fastener in front of the silencer to 9 ft. lbs.
14. Reinstall the exhaust side panel to complete the installation.