

SOFT TOP ROOF KIT

P/N 2879039



Application

MY 13 Ranger 900 XP

Before you begin, read these instructions twice and check to be sure all parts and tools are accounted for. Please retain these installation instructions for future reference and parts ordering information.

This Kit Includes:

<u>Qty</u>	<u>Part Description</u>	<u>Part Number</u>
1.....	Roof, Canvas	
1.....	Metal Header Strip	
4.....	M8 Nylok Nut	
4.....	Snap	
4.....	#6 Machine Screws	
4.....	#6 Nut	
4.....	M8 Bolt, Allen Head	
1.....	Instructions	9924226

Tools Required:

Socket	Torx Wrenches	Metric End Wrenches
Phillips Screwdriver		

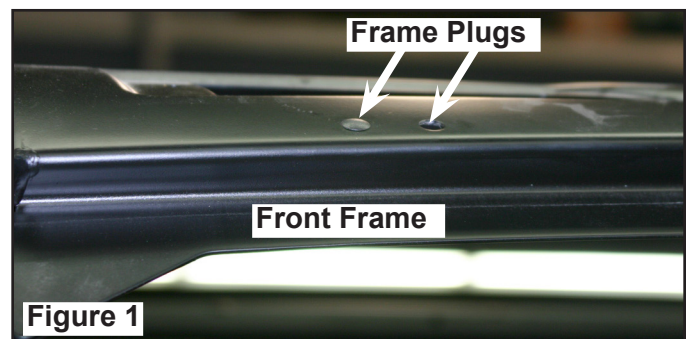
Additional Service Kits Available to Order:

<u>Qty</u>	<u>Part Description</u>	<u>Part Number</u>
1.....	KIT-SVC,ROOF,HDWR,BESTOP,TTN (Includes hardware for header and snaps for rear of roof)	2204809
1.....	KIT-SVC,ROOF,HEADER (Includes front stamped section of roof and hardware)	2204808

IMPORTANT: For your safety, and to ensure a satisfactory installation, perform all installation steps correctly in the sequence as shown on the attached instructions. Please wear safety glasses while performing the steps in the following instructions.

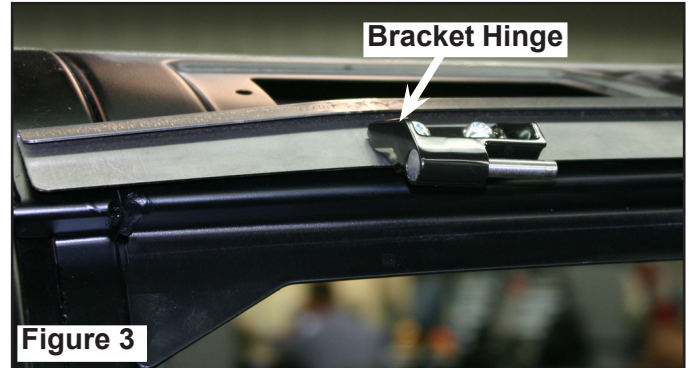
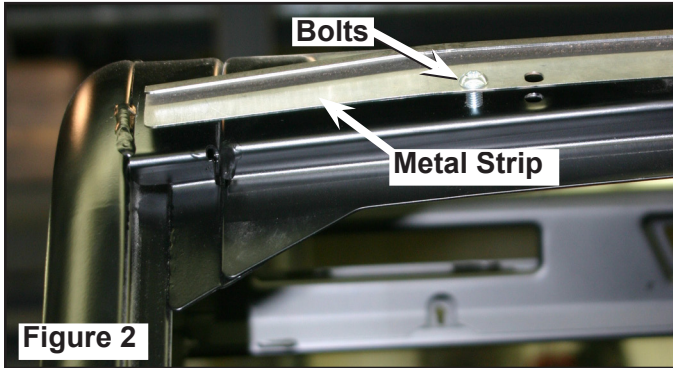
INSTALLATION INSTRUCTIONS

1. Remove four frame plugs from front of vehicle, two on each side. Figure 1.

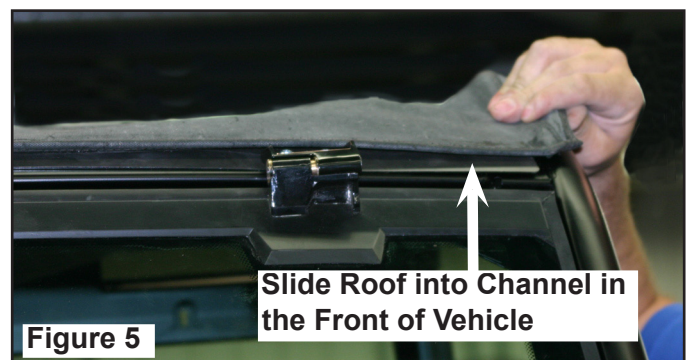
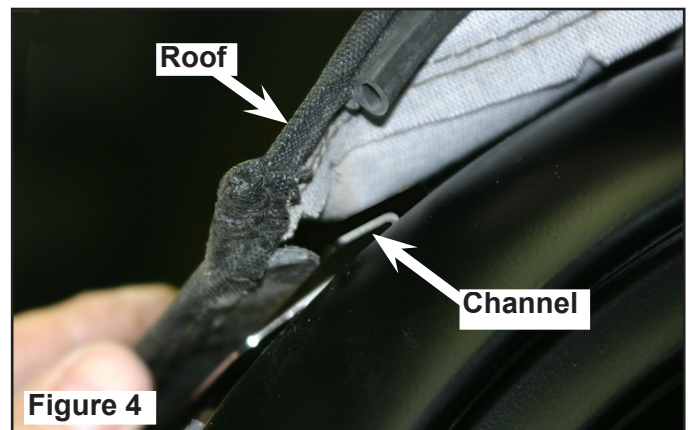


2. Remove protective film from adhesive foam on metal header strip. Align holes in metal strip with the holes in frame. Install metal strip onto front of vehicle with four bolts using a Allen wrench. Figure 2.

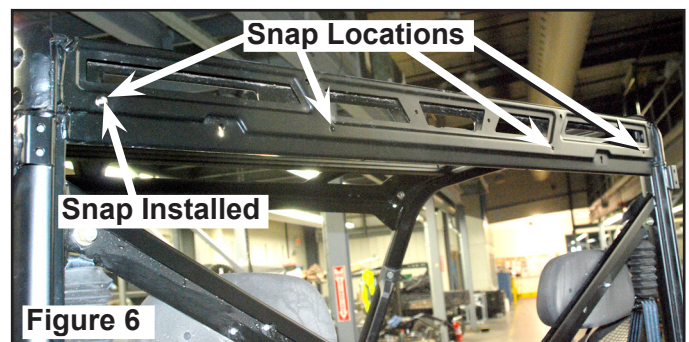
IMPORTANT: If installing roof with a tip out windshield, set the windshield in place on vehicle, install metal strip then bracket hinge, fasten with bolts and nuts. Figure 3.



3. Install roof top by sliding canvas into the channel in the metal roof strip. Figures 4 and 5.



4. Install the metal snaps using #6 machine screws and #6 nylok nuts using metric end wrenches and a Phillips screwdriver. The holes are located in the rear-upper frame of the vehicle and correspond to the snap location on the roof. Figure 6.



5. Slide the top hook into the lower part of buckle on B-pillar upper hinge bracket on each side of vehicle. Tighten the buckles until roof top is tight. Figure 7.
6. If running the top alone, snap cover into place.
7. If using the rear panel accessory, install Rear Panel kit according to instructions.



Figure 7



**Ranger 900 XP Shown with Soft
Doors, Top and Rear Panel Installed**