

RANGER 900 XP PREMIUM ROOF KIT P/N 2878851



Application

Ranger 900 XP

Before you begin, read these instructions twice and check to be sure all parts and tools are accounted for. Please retain these installation instructions for future reference and parts ordering information.

This Kit Includes:

| <u>Qty</u> | <u>Part Description</u> | <u>Part Number</u> |
|------------|-------------------------|--------------------|
| 1..... | Plastic Sport Roof | 5439723 |
| 1..... | Roof Seal Kit | 2879289 |
| 1..... | Headliner, Lock & Ride | 5813912 |
| 3..... | Clip-U Speed Nut | 7081305 |
| 3..... | Screw-TXTH-M6x1.0x15 Z | 7519092 |
| 4..... | M6 Self-Tapping Screws | 7519650 |
| 2..... | #10x5/8" Screw | 7518238 |
| 2..... | Washer | 7556034 |
| 6..... | Plastic Dart Clip | 7670088 |
| 1..... | Instructions | 9924424 |

Tools Required:

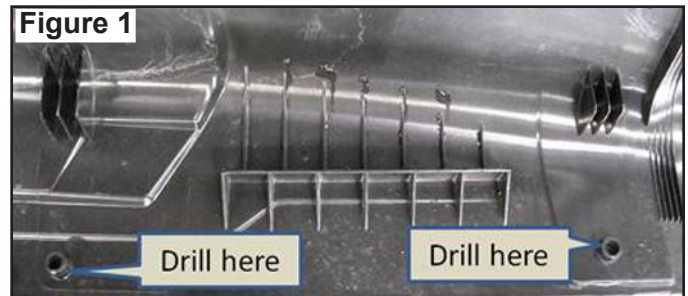
Torx drivers Drill and Drill Bits (optional)

IMPORTANT: Your Polaris Ranger 900 XP Premium Roof is exclusively designed for your vehicle. Please read the installation instructions thoroughly before beginning. Installation is easier if the vehicle is clean and free of debris. For your safety and to ensure a satisfactory installation, perform all installation steps correctly and in the sequence shown.

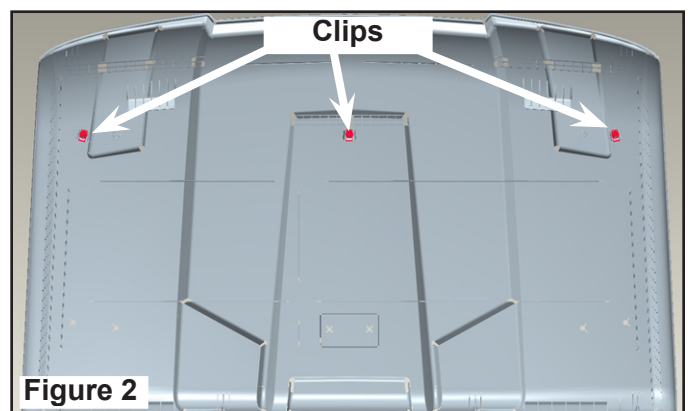
INSTALLATION INSTRUCTIONS

IMPORTANT: Installation of this accessory is made simpler with two people working together on opposite sides of the vehicle

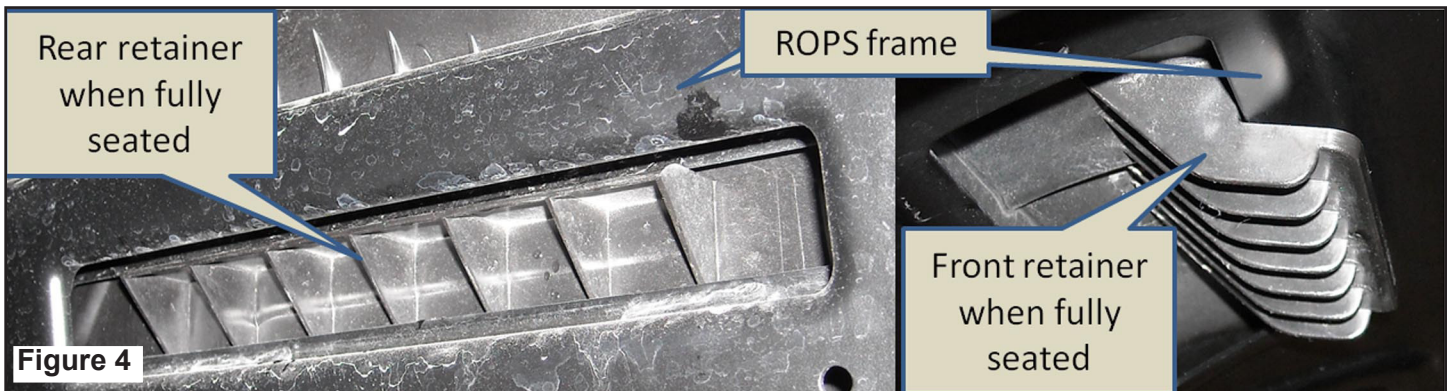
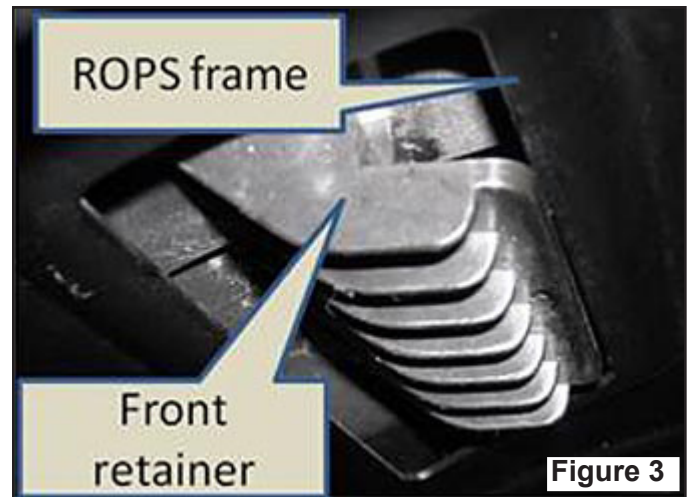
1. If you plan to install this roof so that it is not easily removed, locate the four bosses on the rear section of the roof and, using the plastic bosses as a guide, drill holes through the roof using a 1/4" or 7 mm drill bit. Figure 1.



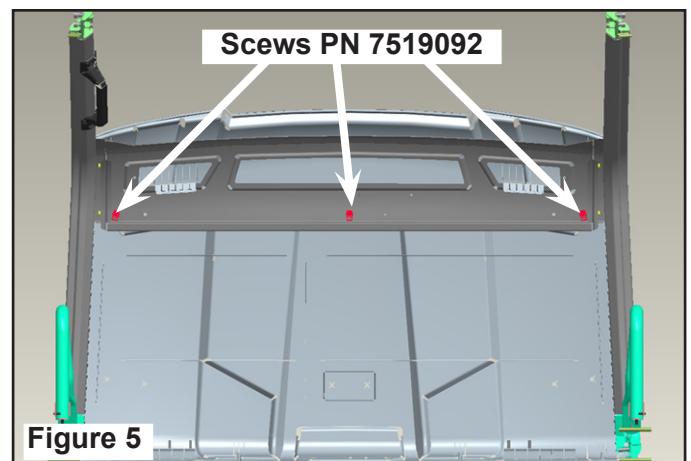
2. Press in clip-U speed nuts in three places. Figure 2.



- Place vehicle transmission in Park position and remove the ignition key.
- Place roof on top of vehicle. Align front retaining hooks on the bottom of the roof with the corresponding openings on the front ROPS structure, and then slide the front retaining hooks just into the openings. Figure 3.



- Grasp the bottom edge of the roof and pull it rearward and down until it locks in place with a loud “click”. If it is not fully seated, push it down from the top until it clicks into place.
- If you have drilled out the mounting bosses to more securely install the roof, install the three M6 screws (PN 7519092) from the rear of the vehicle through the holes in the roof and into the holes in the ROPS frame. Thread in three M6 bolts to secure front of roof to upper frame on vehicle. Tighten to 12-15 in. lbs. (1.35 - 1.7 Nm). This will also help compress the front seal for best sealing in inclement weather. Figure 5.
- If you are installing the interior light kit (PN 2879270) or the windshield wiper kit (PN 2879249), install the wire harness and other components according to the instructions included with those kits. If you decide to add them later, you will need to remove the headliner to properly install and route those wire harnesses.



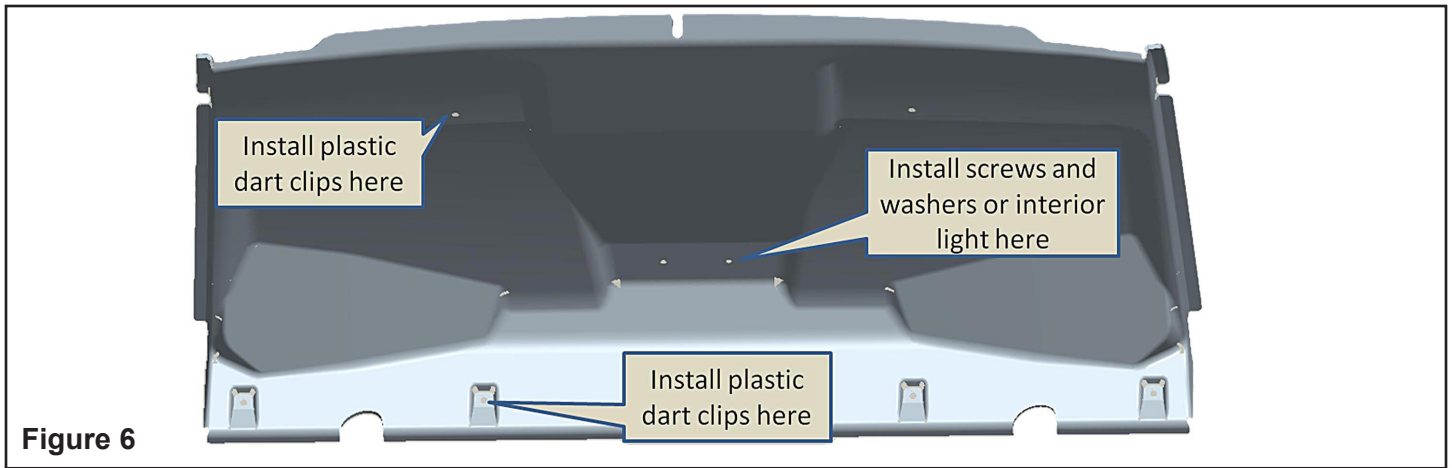


Figure 6

8. Install the headliner by guiding it through one of the door openings and placing it roughly into position below the roof. Slide one side edge of the headliner between the roof and the ROPS frame, then gently pry back the opposite side of the headliner and slide it between the roof and the ROPS frame.

9. FOR VEHICLES BUILT BEFORE 1/1/13:

Install six plastic dart clips (PN 7670088) as shown in Figure 6. Install the center #10 screws with washers and tighten until snug.

- If installing the overhead light kit, do not install the #10 screws included with the roof kit. Connect the light to the wire harness and use two screws included in that kit to secure the light.

FOR VEHICLES BUILT AFTER 1/1/13:

Insert the rear edge of the headliner into the stamping as shown in Figure 7.

Install two dart clips in the front of the headliner as shown in Figure 6. Do not use the four dart clips along the lower side of the headliner. If desired, four ¼” washers can be used on the backside of the holes in the headliner so the plastic dart clips can be installed in the open holes in the headliner.

- If installing the overhead light kit, do not install the #10 screws included with the roof kit. Connect the light to the wire harness and use two screws included in that kit to secure the light.



Figure 7

10. Removal of the roof is accomplished in reverse order:

- Remove the headliner,
- Remove the screws from the roof (if necessary),
- Pull the rear of the roof out firmly and lift it up,
- Slide roof forward and off the vehicle.

OPERATION INSTRUCTIONS

The roof is meant to provide limited protection to the occupants from sun, rain and inclement weather but is not meant to be used as a safety device. This roof, when installed properly, can be left installed on a vehicle that is being towed on a trailer without the use of auxiliary restraints to retain it in place.

If your purposes require a FOPS-rated roof, please order Kit PN 2878850 which is appropriate for applications which require a FOPS rated roof.