

RANGER SOFT DOORS KIT

P/N 2878853



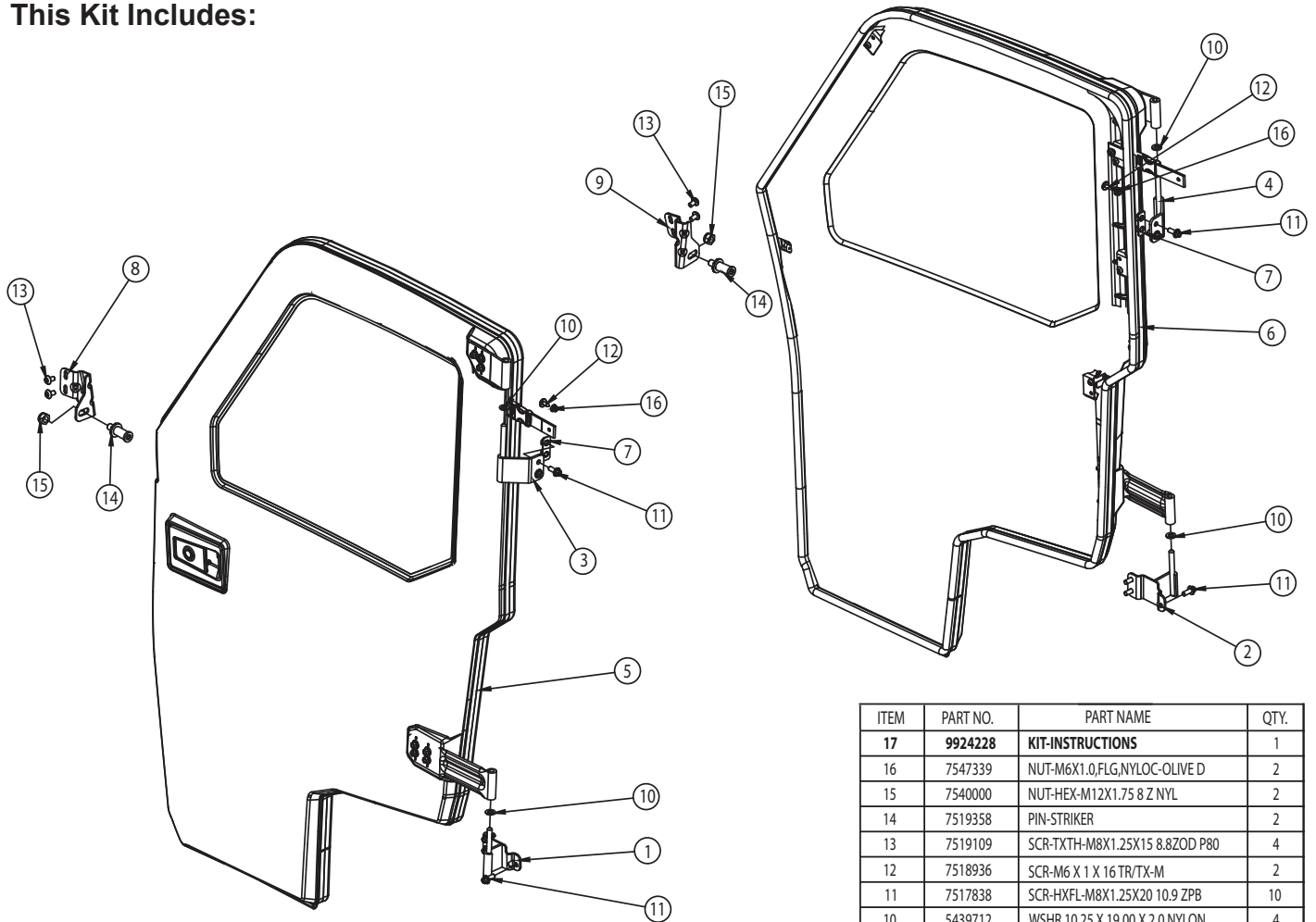
POLARIS
The Way Out.®

Application

MY 13 Ranger 900 XP

Before you begin, read these instructions twice and check to be sure all parts and tools are accounted for. Please retain these installation instructions for future reference and parts ordering information.

This Kit Includes:



ITEM	PART NO.	PART NAME	QTY.
17	9924228	KIT-INSTRUCTIONS	1
16	7547339	NUT-M6X1.0,FLG,NYLOC-OLIVE D	2
15	7540000	NUT-HEX-M12X1.75 8 Z NYL	2
14	7519358	PIN-STRIKER	2
13	7519109	SCR-TXTH-M8X1.25X15 8.8ZOD P80	4
12	7518936	SCR-M6 X 1 X 16 TR/TX-M	2
11	7517838	SCR-HXFL-M8X1.25X20 10.9 ZPB	10
10	5439712	WSHR,10.25 X 19.00 X 2.0,NYLON	4
9	5256944	BRKT-STRIKER,ADJUST,RH	1
8	5256943	BRKT-STRIKER,ADJUST,LH	1
7	5256140	PLATE-HINGE	2
6	—	BESTOP DOOR,RH	1
5	—	BESTOP DOOR,LH	1
4	1018775	WELD-HINGE,UPPER,RH	1
3	1018774	WELD-HINGE,UPPER,LH	1
2	1018773	WELD-HINGE,LOWER,RH	1
1	1018772	WELD-HINGE,LOWER,LH	1

Tools Required:

Drill
Utility Knife or Air Saw
Soft Faced Hammer

Torx Bits
Phillips Screwdrivers

Flathead Screwdriver
Metric Wrenches

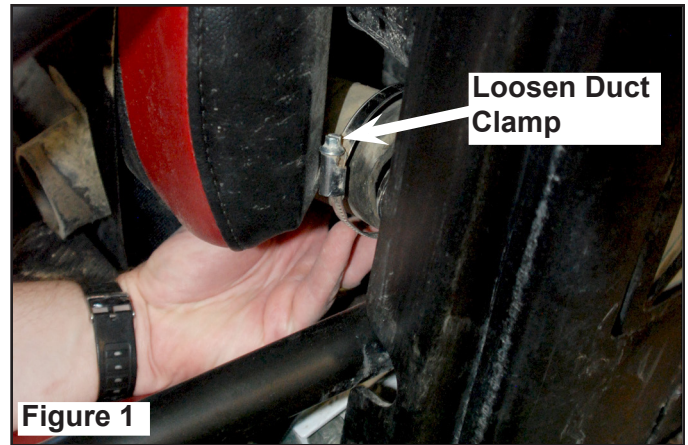
Additional Service Kits Available to Order:

<u>Qty</u>	<u>Part Description</u>	<u>Part Number</u>
1.....	KIT-SVC,HINGES (includes all hinges for the door kit)	2204805
1.....	KIT-SVC,LATCH,LH (includes latch, striker pin and hardware)	2204806
1.....	KIT-SVC,LATCH,RH (includes latch, striker pin and hardware)	2204807
1.....	KIT-SVC,DOOR,BESTOP,LH (includes door skin)	2634835
1.....	KIT-SVC,DOOR,BESTOP,RH (includes door skin)	2634836

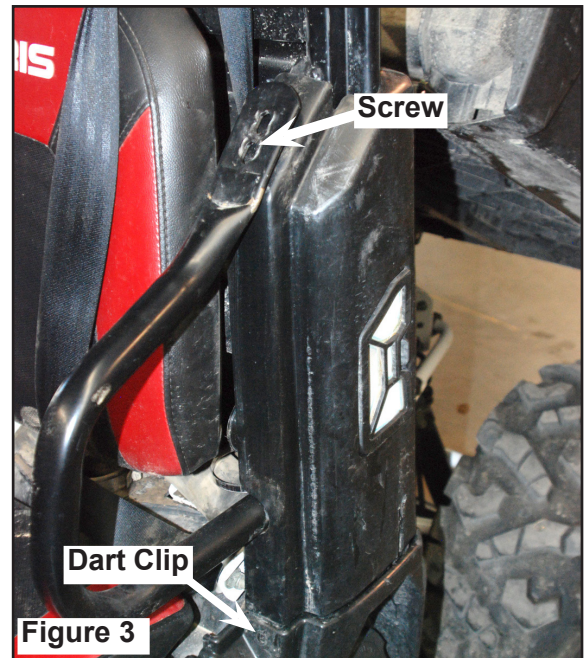
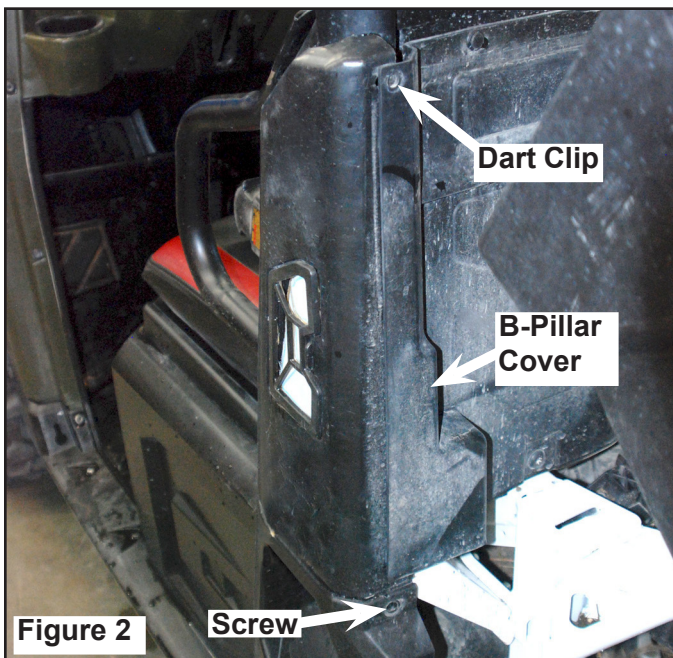
IMPORTANT: For your safety, and to ensure a satisfactory installation, perform all installation steps correctly in the sequence as shown on the attached instructions. Please wear safety glasses while performing the steps in the following instructions.

INSTALLATION INSTRUCTIONS

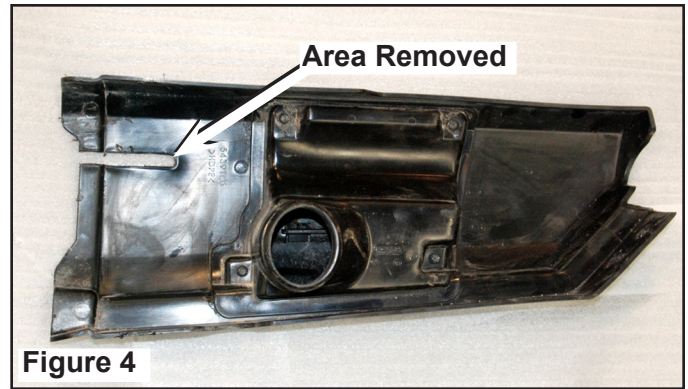
1. Turn off vehicle and put into PARK.
2. Lift vehicle box.
3. Starting on either side of vehicle, loosen duct hose clamp located behind seat using a flathead screwdriver. Slide duct away from B-pillar cover. Figure 1.



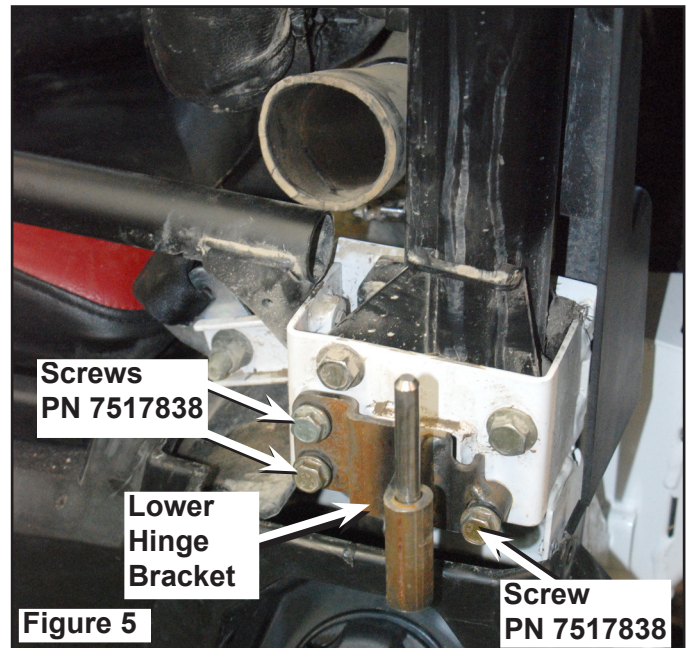
4. Remove B-pillar cover by removing two dart clips and two screws shown in Figures 2 and 3. Save fasteners for reinstallation.



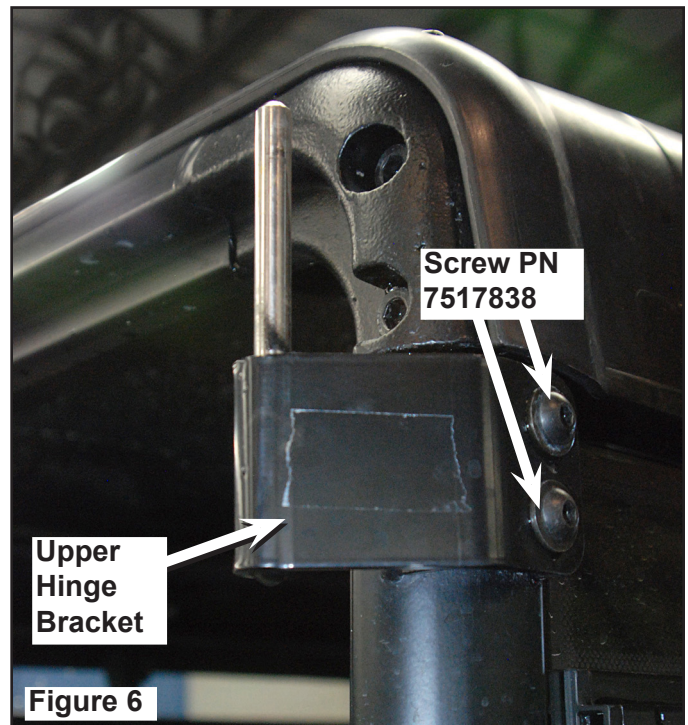
5. Cut a hole for the lower hinge bracket in the B-pillar cover with an utility knife or air saw. The area to be removed is marked on the back of the cover. Figure 4.



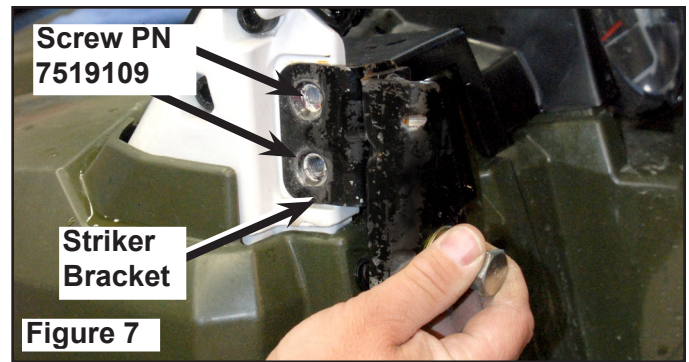
6. Install the lower hinge bracket (PN 1018773 RH; 1018772 LH) using three screws (PN 7517838) in the existing holes on the vehicle with a 13 mm socket wrench. Torque to 17 ft. lbs. (23 Nm). Figure 5.



7. Install upper hinge bracket (PN 1018775 RH; 1018774 LH) by putting two bolts (PN 7517838) through bracket and threaded backing plate. Loosely tighten to frame for adjustments later. Figure 6.



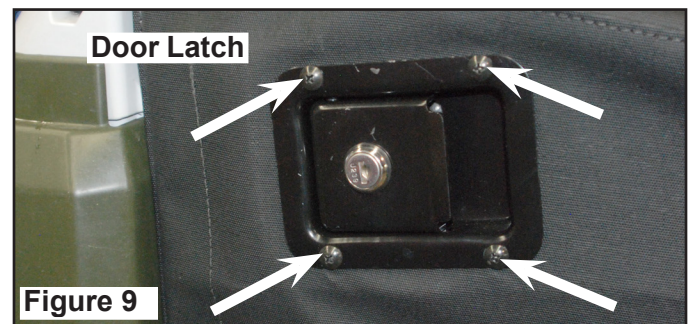
8. Attach striker adjusting bracket (PN 5256944 RH; 5256943 LH) with two screws (PN 7519109). Loosely tighten allowing for adjustment later. Figure 7.



9. Replace the B pillar cover using the fasteners removed in Step 4. Figure 8.



10. Install hinges and door latch to doors. Do not tighten fasteners at this time. Figure 9.



11. Place the doors on bracket pins by first placing the door on the top door bracket then on bottom door bracket. Figure 10.



- Center door into place. Unzip the window to access door hinge hardware. Figure 11.



Figure 11

- Tighten the lower door hinge bracket bolts using a 7/16 socket wrench and a Allen wrench or torx wrench. Torque to 17 ft. lbs. (23 Nm). Figure 12.



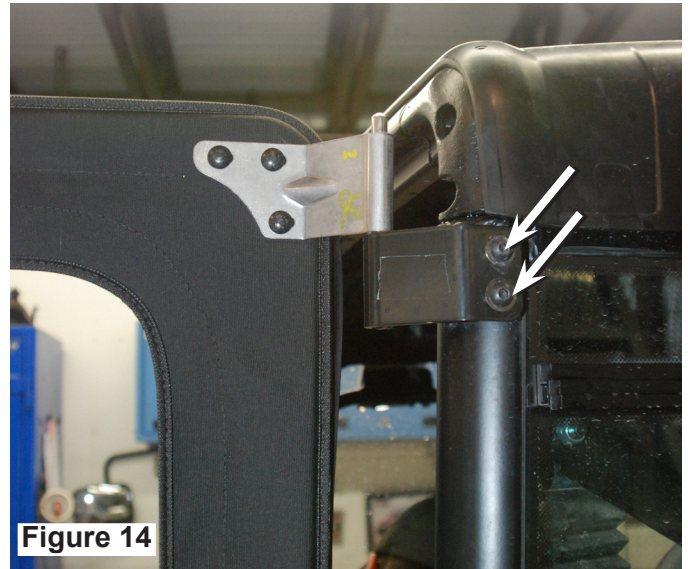
Figure 12

- Tighten the upper door hinge bracket bolts using a 7/16 socket wrench. Torque to 7 ft. lbs. (9.5 Nm). Figure 13.

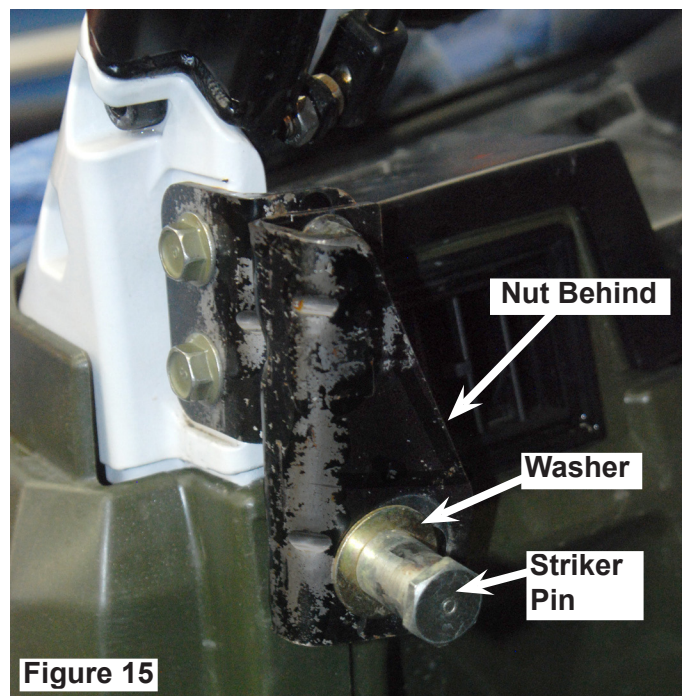


Figure 13

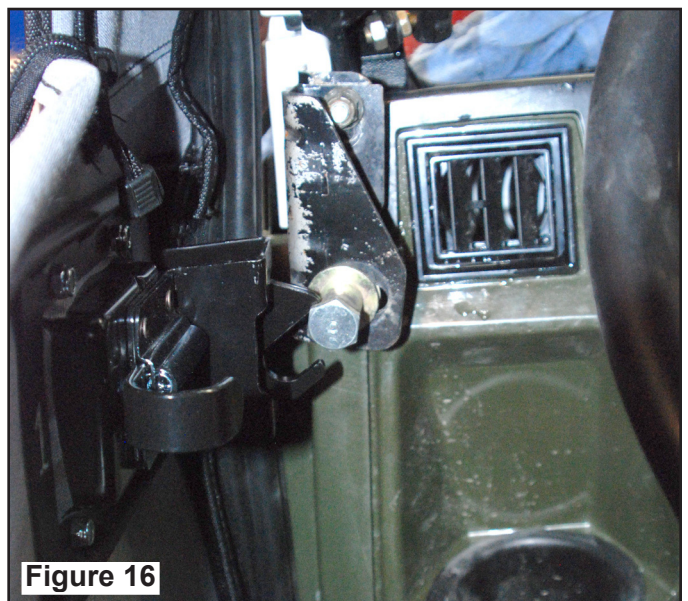
15. Rotate door out 90° and tighten top two bolts. Torque to 17 ft. lbs. (23 Nm). Figure 14.



16. Install striker pin, (PN 7519358) washer (PN 5439712) and nut (PN 7540000) into striker bracket. Tighten until snug. Figure 15.



17. Close the door and adjust the striker pin to the correct height. Figure 16.



18. Tighten the four door latch screws. Figure 16.



19. Open and close the door and adjust the door latch and striker pin so the door opens and closes smoothly. Check alignment of door and adjust as necessary. Figure 17.

20. Torque striker nut to 30 ft. lbs. (40.6 Nm).

21. Repeat Steps 3 through 20 for the other door.



Ranger 900 XP Shown with Soft
Doors, Top and Rear Panel Installed