



POLARIS[®]
The Way Out.

HEAVY RATE FRONT SPRINGS KIT

KIT P/N 2876153

Application

Polaris 2005 - 2007 Sportsman ATV's

NOTE: Before installing this kit, check to be sure that it is the correct kit for your machine. Thumb levers are different for different models.

Before you begin, read these instructions and check to be sure all parts and tools are accounted for. Please retain these installation instructions for future reference and parts ordering information.

This kit includes:

Qty	Description	Part Number
2	128 lb./In. Rate Springs	7043094
1	Instructions	9921255

You will need to Supply:

- Strut Rod Wrench
- Strut Spring Compressor Tools

IMPORTANT: For your safety, and to ensure a satisfactory installation, perform all installation steps correctly in the sequence as shown on the attached instructions.

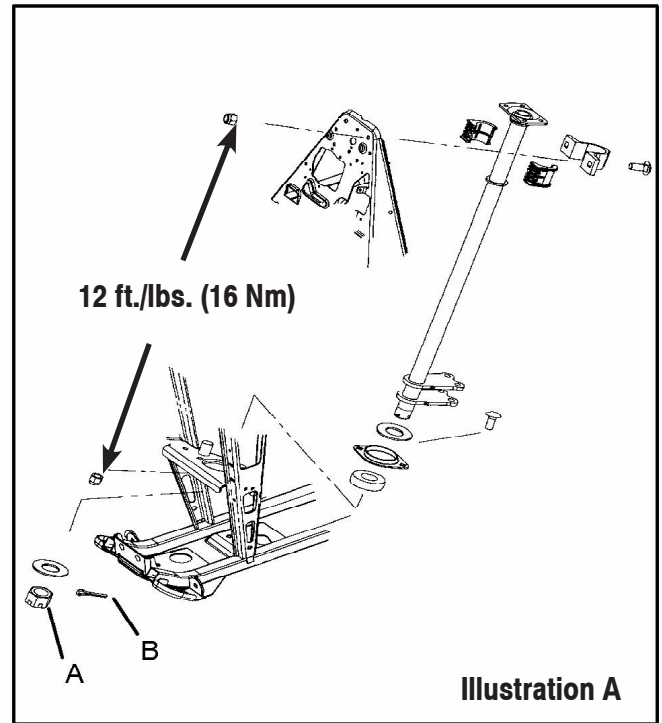
INSTALLATION INSTRUCTIONS

STEERING POST REMOVAL

1. Remove the front cab.
2. Remove the handle bar pod.
3. Remove the handle bar.
4. Remove the fuel tank bracket assembly.
5. Remove the steering tie rod ends from the steering bracket. **Note:** The orientation of the fasteners and bracket on the steering assembly.
6. Remove the steering post nut (A) at the mount plate.
7. Remove the top steering bracket .
8. Remove the steering post.

Steering Post Assembly (Illus. A)

1. Hand tighten steering post slotted nut (A).
2. Align the cotter pin hole on the steering post slotted nut (A).
3. Install the cotter pin (B). Bend both ends of the cotter pin around the slotted nut (A) in opposite directions.
4. Check the steering, the handle bars must move freely and easily from full left to full right without binding.



Front Strut Replacement (Illus. B)

1. Hold strut rod and remove top nut.
2. Remove upper strut pivot assembly.
3. Compress spring using any commercially available compressor tool and remove the spacer nut.
4. Remove coil spring and collapse strut cartridge.
5. Remove two pinch bolts from strut casting.
6. Remove strut cartridge.
7. Install cartridge until bottomed in strut casting.
8. Install pinch bolts with wire clamp(s). Torque pinch bolts to 15 ft./lbs. (21 Nm).
9. Reassemble spring and top pivot assembly. Be sure all parts are installed properly and seated fully.
10. Torque strut rod nut to 15 ft./lbs (21 Nm). Do not over torque the nut.

