

# BRACKET AND LOCK AND RIDE KIT



P/N 2881331

## APPLICATION

Sportsman 850, Sportsman XP 1000, Sportsman 570 and ETX

### NOTE

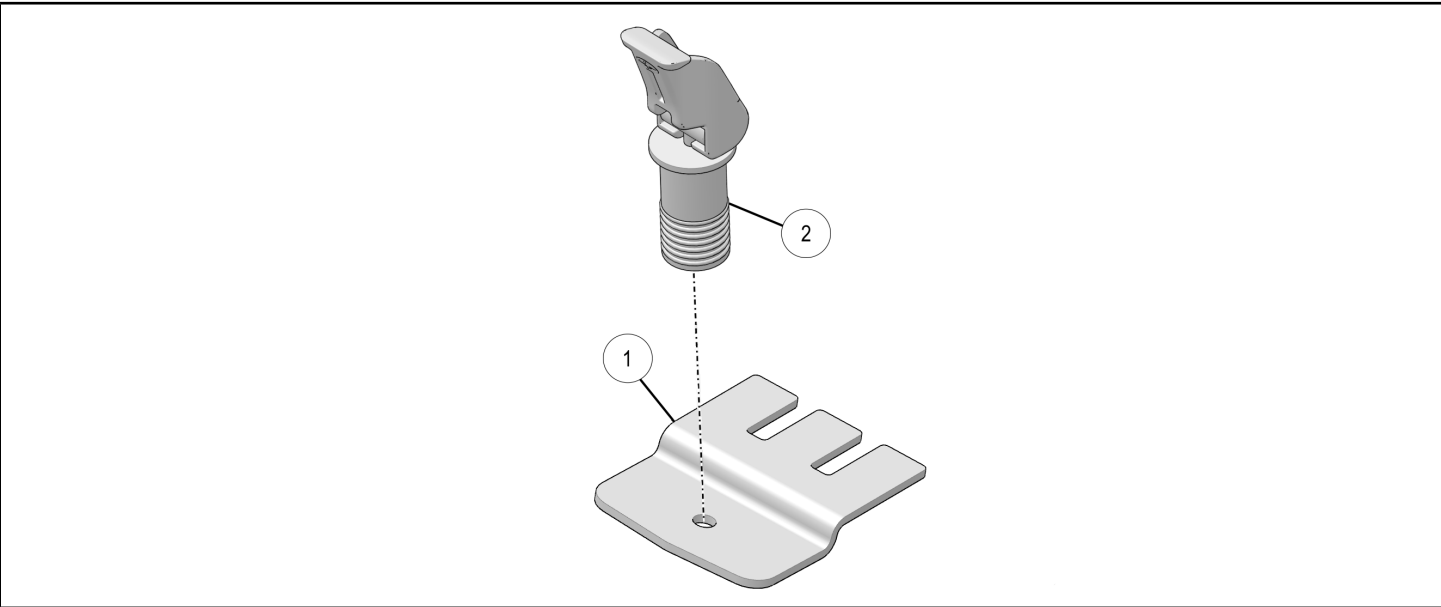
Storage Box Kit (P/N 2881128) is purchased separately.

## BEFORE YOU BEGIN

Read these instructions and check to be sure all parts and tools are accounted for. Please retain these installation instructions for future reference and parts ordering information.

## KIT CONTENTS

This Kit includes:



REF	QTY	PART DESCRIPTION	PART NUMBER
1	2	Storage Box Bracket	—
2	2	Lock and Ride Kit	2881308
3 (Not Shown)	1	Ratchet Strap	2859047-02
	1	Instructions	9926611

## TOOLS REQUIRED

No Tools Required

## ASSEMBLY TIME

Approximately 10 minutes

## IMPORTANT

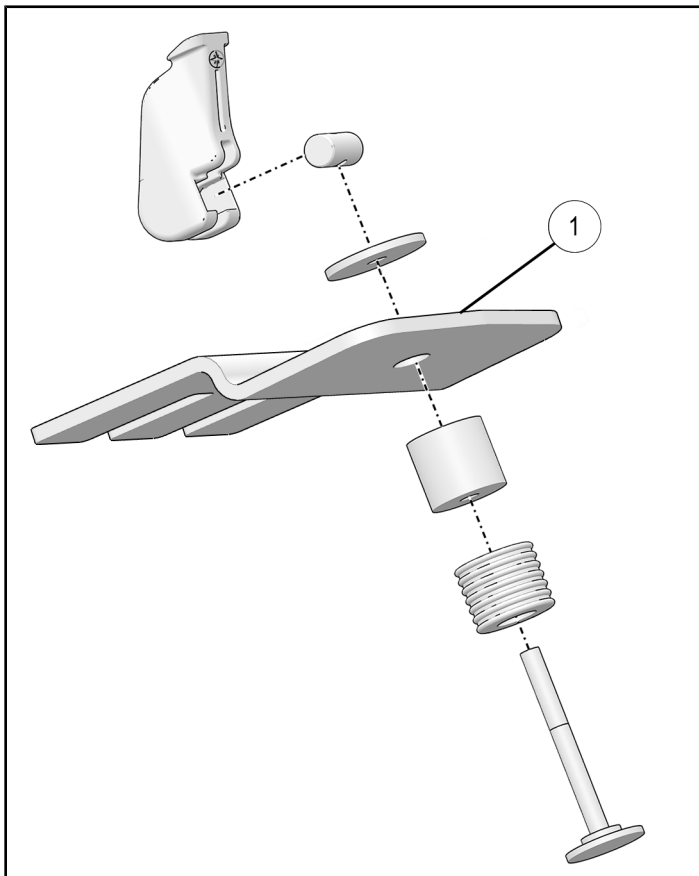
Your BRACKET AND LOCK AND RIDE KIT is exclusively designed for your vehicle. Please read the installation instructions thoroughly before beginning. Installation is easier if the vehicle is clean and free of debris. For your safety, and to ensure a satisfactory installation, perform all installation steps correctly in the sequence shown.

## INSTALLATION INSTRUCTIONS

1. Place vehicle in "PARK". Turn key to "OFF" position and remove from vehicle.
2. Install lock and ride anchor to the bracket ① as shown in figure.

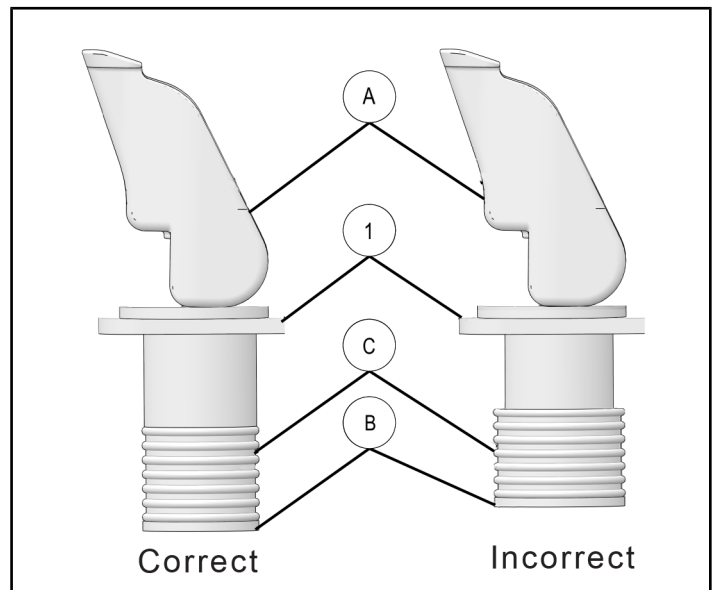
### NOTE

Make sure to assemble all components in the correct order.



## Adjustment

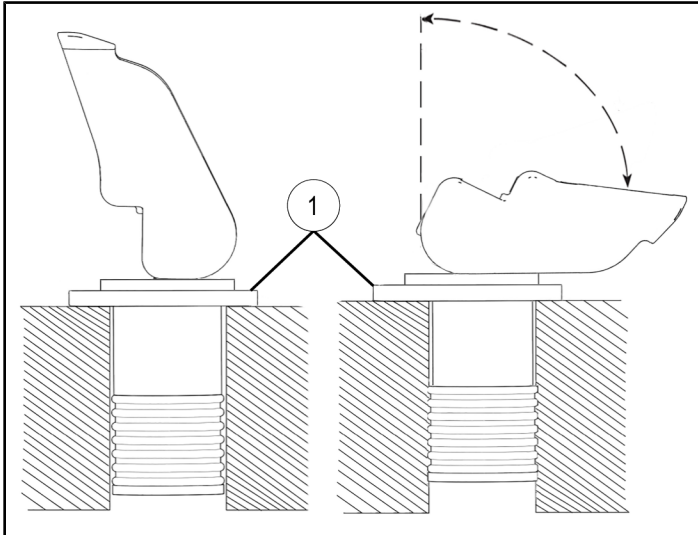
For initial adjustment, the handle should be in the upright position (vertical). Tighten the M6 shaft (B) until all components are tight. Make sure that the expander (C) is not compressed when the handle (A) is in the upright position.



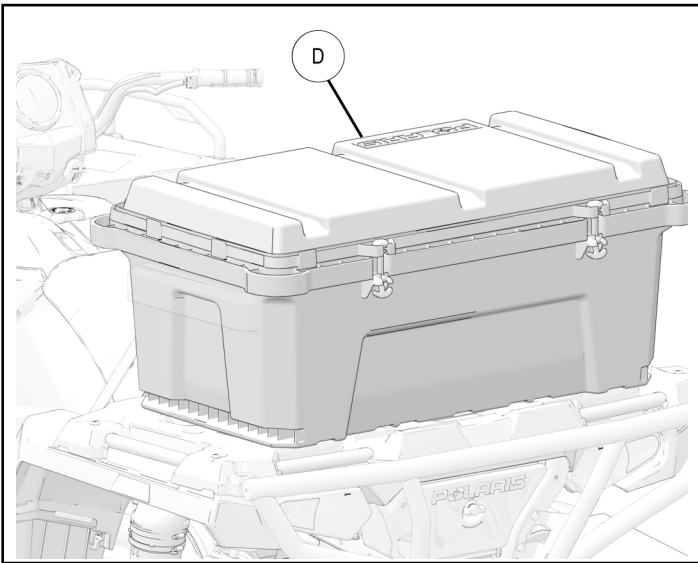
If the anchor tension is inadequate when securing the accessory to the ATV (in case of a heavier accessory), tighten the M6 shaft one turn at a time.

When the M6 shaft (B) is properly adjusted, the anchor should be able to resist a pull force of 150 lb. (667 N) or more.

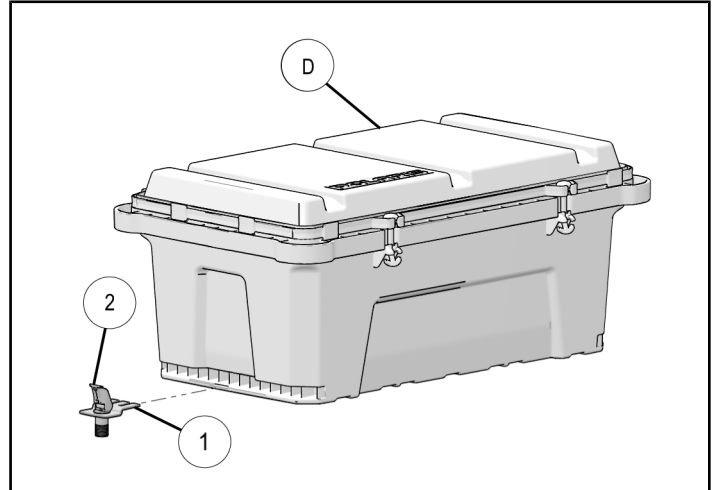
It should be easy to open and close the anchor (5 - 10 lb. (22 - 44 N) push/pull force) while providing adequate holding capability. If the assembly is adjusted too tight, it may be difficult to insert the lock and ride into the hole and/or operate the anchor.



3. Place the storage box (D) on the rear rack of the vehicle.

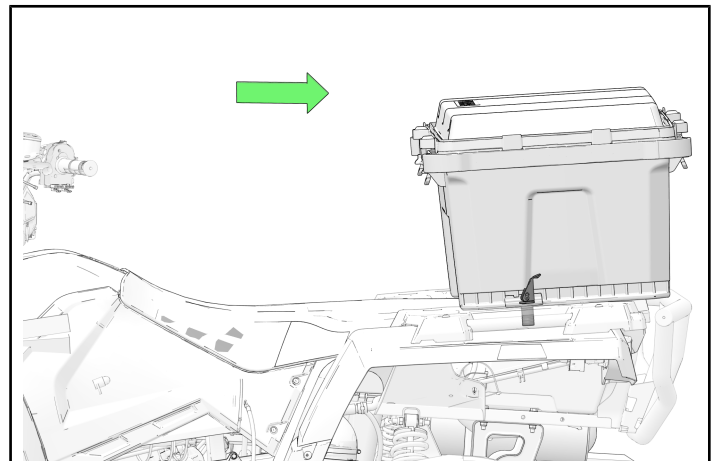
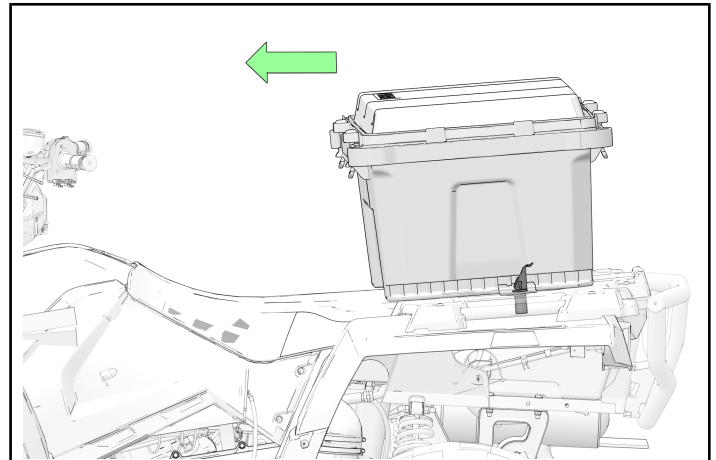


4. Insert the bracket (1) with lock and ride (2) to the storage box (D) grooves on both sides as shown.



#### NOTE

The box can be positioned in several locations forward and backward to allow the rider to enjoy maximum seat room. Sit on the vehicle, check the position of the box, and readjust if necessary before securing box with bracket.



5. Secure the storage box to the vehicle by lock and rides on both sides.

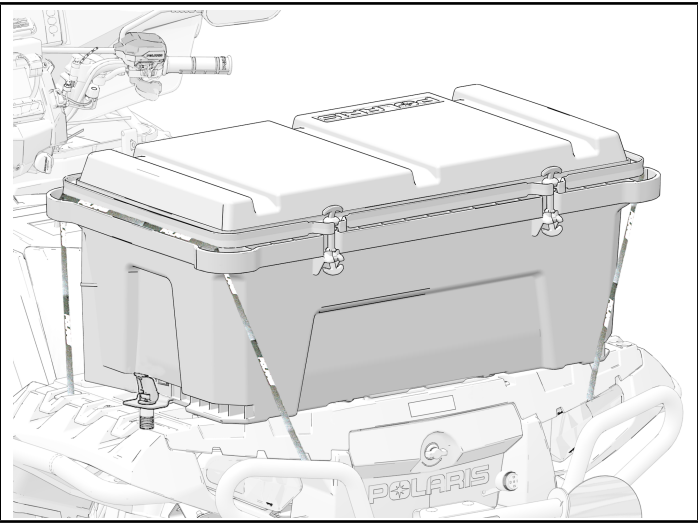
**NOTE**

Press the bracket down to eliminate any gaps between the bracket and rack before you secure the box with lock and rides.

**NOTE**

Check and re-secure the lock and rides often as necessary to prevent the lock and rides from becoming loose.

6. Secure box to vehicle with tie down straps running over the top of the box or around the support rib around the outside of the box. Using the support rib around the outside of the box for tie downs will allow you to open the lid and access storage items without removing the tie down straps.



**COMPATIBILITY**

This bracket and lock and ride kit is compatible with the below accessories.

PART NUMBER	DESCRIPTION
2881128	STORAGE BOX

Storage box has lots of room inside to keep bags dry and secure.

	PART NUMBER	DESCRIPTION
Accessories inside the box	2881129	SPORTSMAN STORAGE UTILITY/ TOOL BAG
	2881130	SPORTSMAN STORAGE TRAIL BAG
	2881131	SPORTSMAN STORAGE HUNTING BAG
	2881428	COOLER BAG
	2881427	BOX DIVIDER (INCLUDED IN STORAGE BOX)