

# FRONT STABILIZER BAR KIT



**P/N 2881205**

## APPLICATION

RZR XP 1000 MY16 and Newer, RZR XP 4 1000 MY16 and Newer

## BEFORE YOU BEGIN

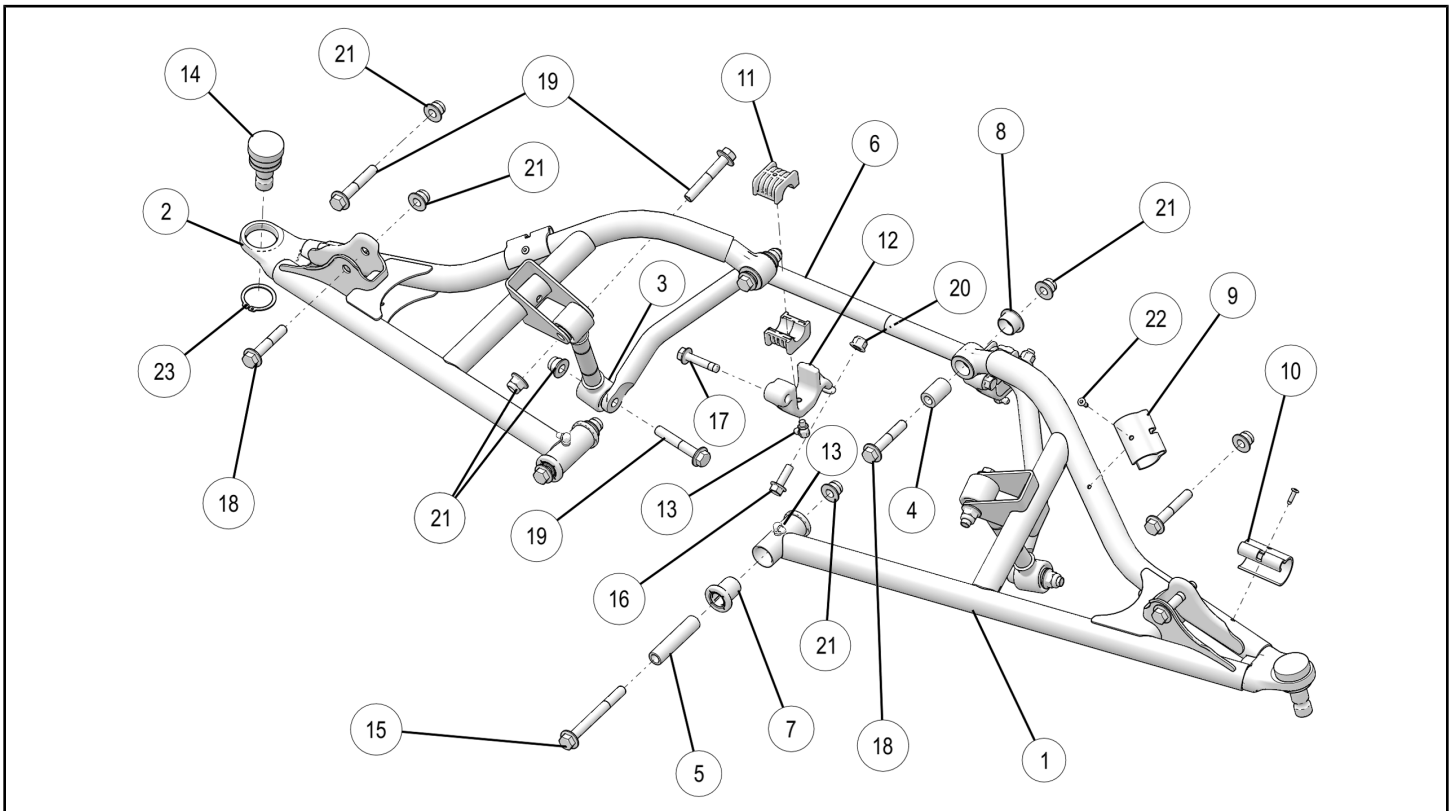
Read these instructions and check to be sure all parts and tools are accounted for. Please retain these installation instructions for future reference and parts ordering information.

## KIT CONTENTS

The following additional parts may be needed for front stabilizer bar installation:

- Front bumper expansion anchors (two each) (sold separately)

This Kit includes:



REF	QTY	PART DESCRIPTION	PART NUMBER
1	1	A-Arm (Control Arm), Upper, Front, LH	1020946
2	1	A-Arm (Control Arm), Upper, Front, RH	1020947
3	2	Link Assembly, Stabilizer Bar	1543407
4	2	Pivot Tube, 29 MM	5138276
5	2	Pivot Tube, 71 MM	5138797
6	1	Stabilizer Bar	5338117
7	4	Bushing, A-Arm (Control Arm), Front Pivot Tube	5439874

REF	QTY	PART DESCRIPTION	PART NUMBER
8	4	Bushing, A-Arm (Control Arm), Rear Pivot Tube	5450095
9	2	Break Line Clip, Inner	5451487
10	2	Break Line Clip, Outer	5451488
11	4	Bushing, Stabilizer Bar	5452274
12	2	Bracket, Stabilizer Bar	5633134
13	4	Zerk Fitting	7080510
14	2	Ball Joint	7081992
15	2	Screw, Hex Flange - M10 X 1.25 X 95	7519043
16*	2	Screw, Hex Flange - M8 X 1.25 X 25	7519243
17*	2	Screw, Hex Flange - M8 X 1.25 X 40	7519267
18	4	Screw, Hex Flange - M10 X 1.25 X 55	7519285
19*	6	Screw, Hex Flange - M10 X 1.25 X 60	7519306
20*	2	Nut, Flange - M8 X 1.25	7547332
21*	12	Nut, Flange - M10 X 1.25	7547333
22*	4	Pop Rivet, 5/32"	7621323
23	2	Ring, Retaining	7710716
	1	Instructions	9926625

Items marked (\*) are included in Hardware Kit PN 2206173.

## TOOLS REQUIRED

- Vehicle Lift/Support
- Socket Set, Metric
- Socket Set, SAE
- Wrench Set, Metric
- Drill
- 5/32 inch Drill Bit
- Soft Face Hammer
- Torque Wrench
- Pop Rivet Puller

## IMPORTANT

Your FRONT STABILIZER BAR KIT is exclusively designed for your vehicle. Please read the installation instructions thoroughly before beginning. Installation is easier if the vehicle is clean and free of debris. For your safety, and to ensure a satisfactory installation, perform all installation steps correctly in the sequence shown.

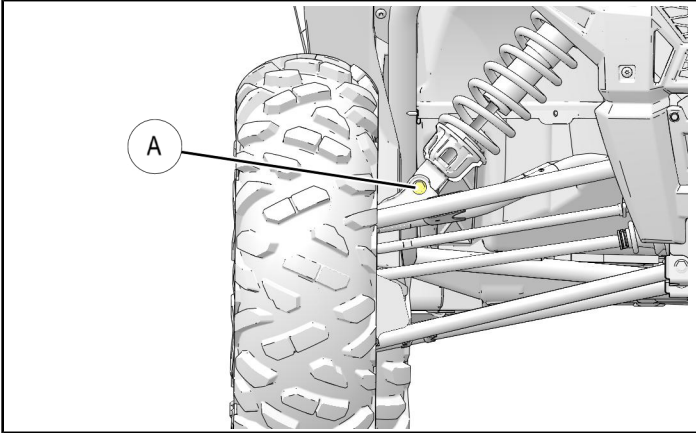
## ASSEMBLY TIME

Approximately 60 minutes

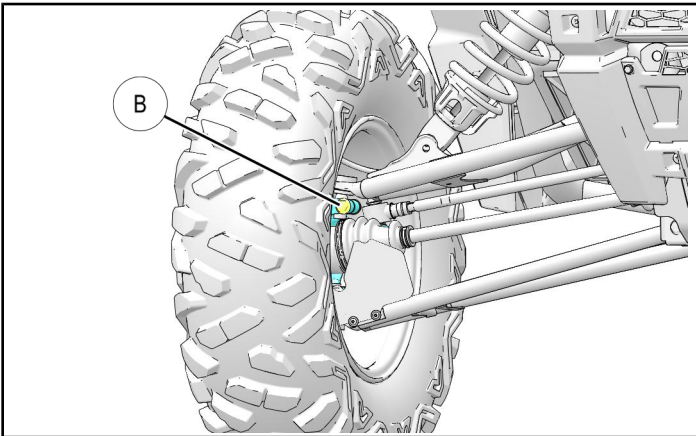
# INSTALLATION INSTRUCTIONS

## UPPER A-ARM REMOVAL

1. Properly lift and safely support front vehicle frame.
2. Remove front wheels.
3. Remove and discard lower shock bolt and nut (A) from upper A-arm.



4. Detach brake line from A-arm clips.
  - a. Outboard clip: Drill out rivet securing clip to A-arm. Clip will not be reused.
  - b. Inboard clip: Remove brake line from clip with fingers.
5. Remove and discard upper ball joint pinch bolt (B) and nut from bearing carrier.

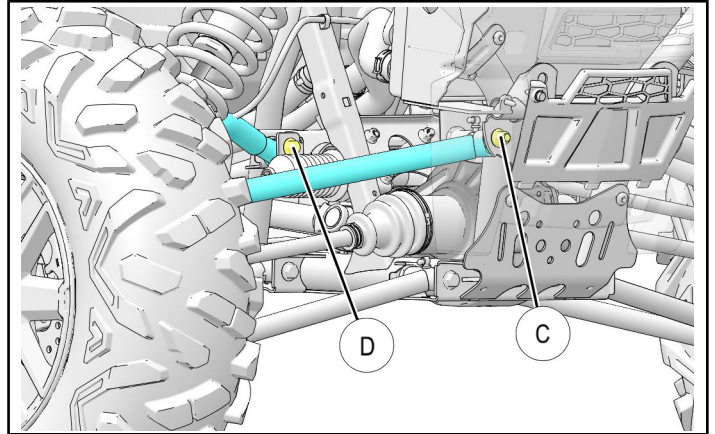


6. Using soft face hammer, tap on bearing carrier to loosen upper A-arm ball joint end while lifting upward on upper A-arm. Completely remove ball joint end from bearing carrier.
7. Optional: Remove front bumper (if installed) to facilitate removal of A-arm to frame front fastener.

### NOTE

Bumper reinstallation will require use of new expansion anchors (expansion anchors sold separately).

8. Remove and discard upper A-arm to frame front (C) and rear (D) bolts and nuts. Remove A-arm from vehicle.



9. Repeat Steps 3-8 for opposite side.

## A-ARM AND STABILIZER BAR INSTALLATION

### WARNING

Locking agent on old fasteners was destroyed during removal. DO NOT reuse old fasteners. Serious injury or death could result if fasteners come loose during operation.

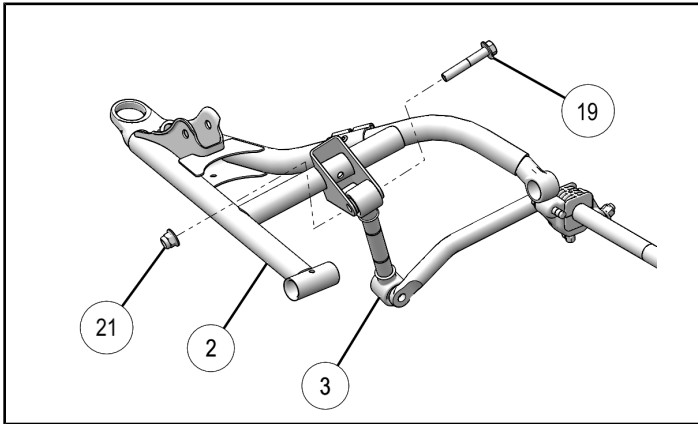
1. Install new upper A-arms ① ② to vehicle frame.
  - a. Insert two bushings ⑦ and pivot tube ⑤ into front attach location.
  - b. Insert two bushings ⑧ and pivot tube ④ into rear attach location.
  - c. Install front A-arm to frame using NEW bolt ⑮ and nut ⑰.
  - d. Install rear A-arm to frame using NEW bolt ⑱ and nut ⑰.
  - e. Torque front and rear fasteners to specification.

### TORQUE

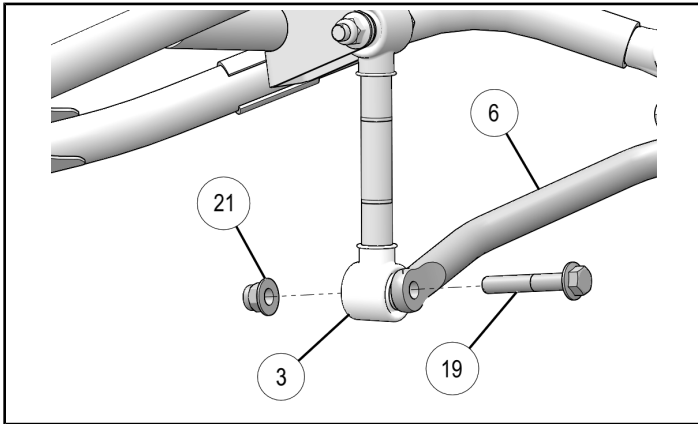
A-arm to Vehicle Frame Fasteners: 42 ft. lbs. (57 Nm)

2. Repeat Step 1 for opposite side of vehicle.
3. Insert lower halves of bushings ⑪ into stabilizer bar brackets ⑫, then loosely install brackets to vehicle frame using front screws ⑰. Do not install rear bolts ⑯ and nuts ⑲ at this time.
4. Insert stabilizer bar ⑥ through side of vehicle, resting on installed bushings ⑪.

5. Insert upper halves of bushings ⑪ into stabilizer bar brackets ⑫, then loosely install rear bolts ⑬ and nuts ⑭ securing brackets to vehicle frame.
6. Loosely install upper end of stabilizer bar links ③ to A-arms ① ② using bolts ⑮ and nuts ⑯.



7. Loosely install lower end of stabilizer bar links ③ to stabilizer bar ⑥ using bolts ⑮ and nuts ⑯.



8. Torque all fasteners to specification.

### TORQUE

Stabilizer Bar Bracket Fasteners: 17 ft. lbs. (23 Nm)  
 Stabilizer Bar Link Fasteners: 40 ft. lbs. (54 Nm)

### ⚠ WARNING

Locking agent on old fasteners was destroyed during removal. DO NOT reuse old fasteners. Serious injury or death could result if fasteners come loose during operation.

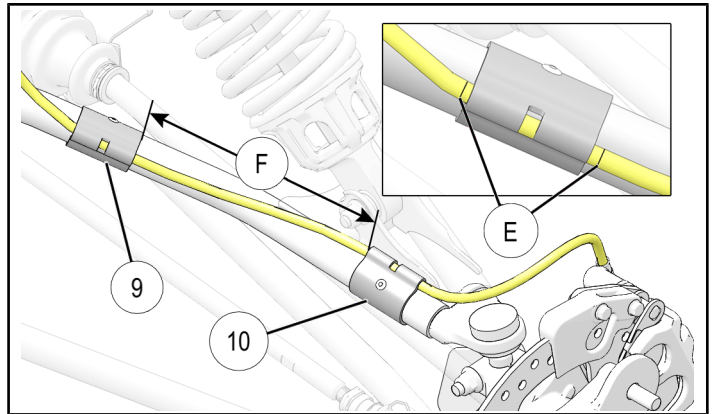
9. Install upper A-arm ball joint end to bearing carrier using NEW pinch bolt ⑰ and nut ⑱. Torque to specification.

### TORQUE

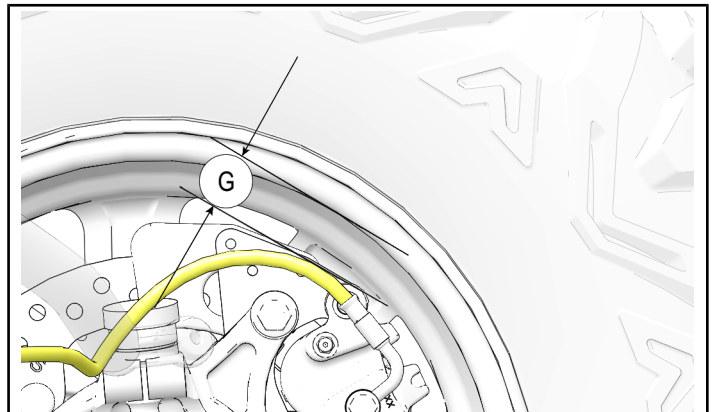
Ball Joint Pinch Fasteners: 42 ft. lbs. (57 Nm)

10. Secure brake lines to A-arms using clips ⑨ and ⑩ and rivets ⑳. Adjust brake line as required to achieve the following:

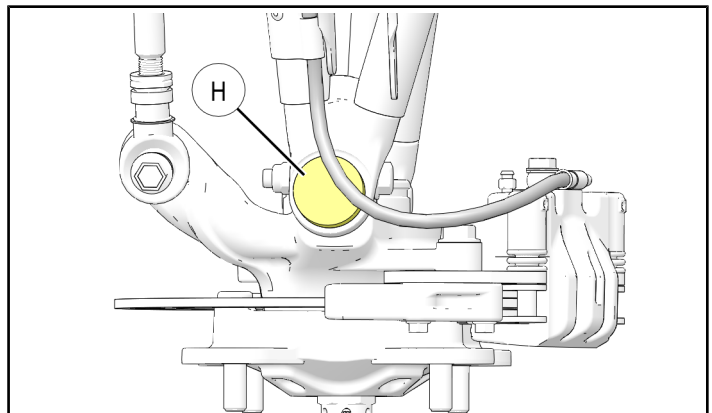
- a. Ensure alignment marks (E) are equally visible on each side of clip as shown. There should be no brake line slack (F) between clips.



- b. Ensure brake line does not contact wheel. There should be a 1/2 inch (13 mm) minimum gap (G) between brake line and wheel as shown.



- c. Ensure brake line lays flat on top of ball joint (H) as shown.



11. Attach lower end of shock to A-arm using NEW bolt ⑱ and nut ⑳. Torque to specification.

**TORQUE**

Front Shock Mounting Fasteners: 42 ft. lbs. (57 Nm)

12. Repeat Steps 9–11 for opposite side.

13. Reinstall bumper (if removed).

**NOTE**

Bumper reinstallation will require use of new expansion anchors (expansion anchors sold separately).

14. Install wheel and wheel nuts. Torque to specification.

**TORQUE**

Wheel Nuts (Aluminum Rims): 120 ft. lbs. (163 Nm)

**TEST DRIVE**

1. After installation of Front Stabilizer Bar Kit, test vehicle at low speeds before returning to service.