

PLOW MOUNT KIT



P/N 2882107

APPLICATION

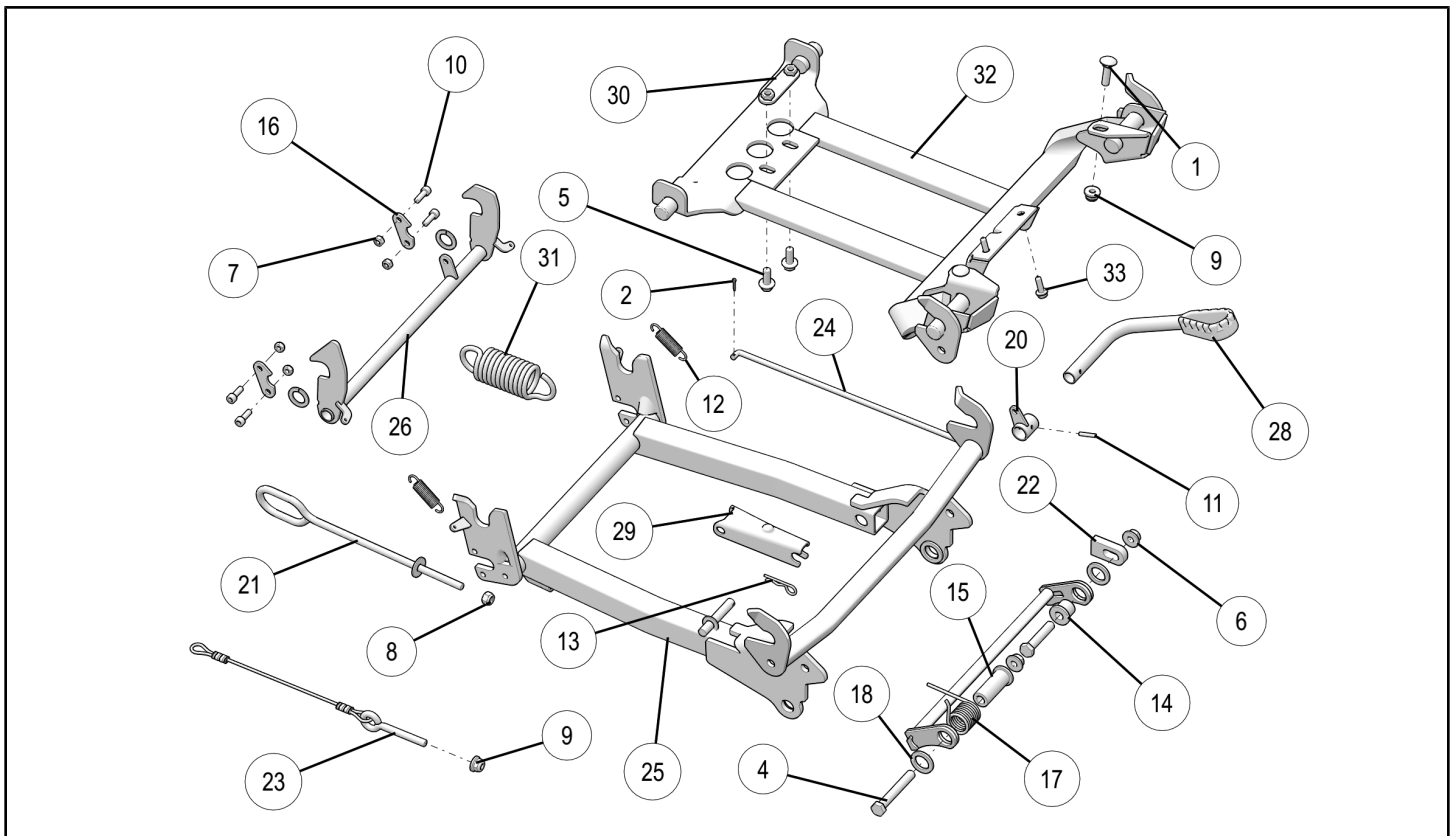
Verify accessory fitment at Polaris.com.

BEFORE YOU BEGIN

Read these instructions and check to be sure all parts and tools are accounted for. Please retain these installation instructions for future reference and parts ordering information.

KIT CONTENTS

This Kit includes:



SPARE KITS

REF	PART DESCRIPTION	PLOW MOUNT KIT (2882107)	MOUNT PLATE KIT (2205388)	ACE GLACIER PRO LATCH KIT (2205067)	HARDWARE KIT (2205695)	SPRING AND CABLE KIT (2205696)	WINCH LINK KIT (2205384)	MOUNT PLATE HARDWARE KIT (2206415)
1	Carriage Bolt, M8 X 1.25 X 30	2X			2X			2X
2	Cotter Pin, 2 mm X 10 mm	2X		2X	2X			
3	Hexagonal Bolt M10 X 1.5 X 70	1X			1X			
4	Hexagonal Bolt M10 X 1.5 X 50	1X			1X			

SPARE KITS								
REF	PART DESCRIPTION	PLOW MOUNT KIT (2882107)	MOUNT PLATE KIT (2205388)	ACE GLACIER PRO LATCH KIT (2205067)	HARDWARE KIT (2205695)	SPRING AND CABLE KIT (2205696)	WINCH LINK KIT (2205384)	MOUNT PLATE HARDWARE KIT (2206415)
5	Hexagonal Flange Bolt M8 X 1.25 X 20	2X			2X			2X
6	Hexagonal Flange Nut M10 X 1.5	2X			2X			
7	Hexagonal Nylon Nut M6 X 1.0	4X			4X			
8	Hexagonal Nylon Nut M8 X 1.25	1X			1X		1X	
9	Hexagonal Nylon Flange Nut, M8 X 1.25	3X			3X	1X		2X
10	Socket Head Cap Screw M6 X 1 X 18mm	4X			4X			
11	Spiral Pin	1X		1X	1X			
12	Tension Spring	2X		2X				
13	"R"Pin Short Zinc Plated	1X		1X	1X			
14	Short Flange Bushing	1X			1X			
15	Long Flange Bushing	1X			1X			
16	Half Lock	2X			2X			
17	Torsion Spring	1X			1X			
18	Washer, HDPE	4X			4X			
19	Spacer	2X			2X			
20	Pedal Link	1X		1X				
21	Winch Link	1X					1X	
22	Height Stopper	1X			1X			
23	Adjustment Wire	1X				1X		
24	Link Rod	1X		1X				
25	Fixation Frame	1X						
26	Rear Hooks	1X		1X				
27	Height Locker Lever	1X		1X				
28	Welded Pedal	1X		1X				
29	Rocker	1X		1X				
30	Tightening Plate	1X			1X			1X
31	Spring	1X				1X		
32	Mount Plate Frame Assembly	1X	1X					
33	Threaded Cutting Screw, M6 X 1.0 X 20	2X						2X
	Instructions (9927281)	1X						

TOOLS REQUIRED

- Safety Glasses
- Long Nose Pliers

- 13mm, 15mm and 17mm Sockets and Wrenches
- T40 Torx®

IMPORTANT

Your PLOW MOUNT KIT is exclusively designed for your vehicle. Please read the installation instructions thoroughly before beginning. Installation is easier if the vehicle is clean and free of debris. For your safety, and to ensure a satisfactory installation, perform all installation steps correctly in the sequence shown.

ASSEMBLY TIME

Approximately 40 minutes

INSTALLATION INSTRUCTIONS

IMPORTANT

The use of a Polaris winch with a Pro HD auto-stop and synthetic winch rope are recommended for use with this plow system to prevent premature failure of the winch cable.

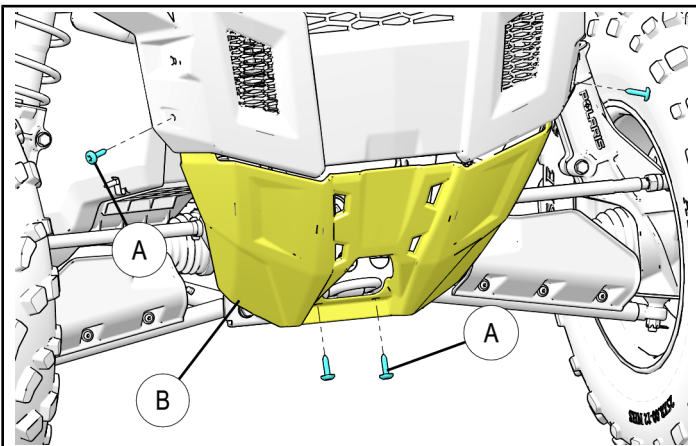
3. Using a knife or cutter, trim the area (highlighted in blue) on winch cover (D). Install winch cover (D) onto the vehicle using retained screws (A).

NOTE

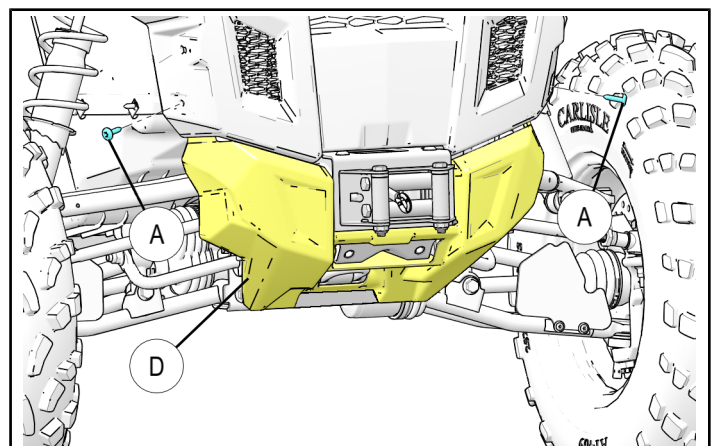
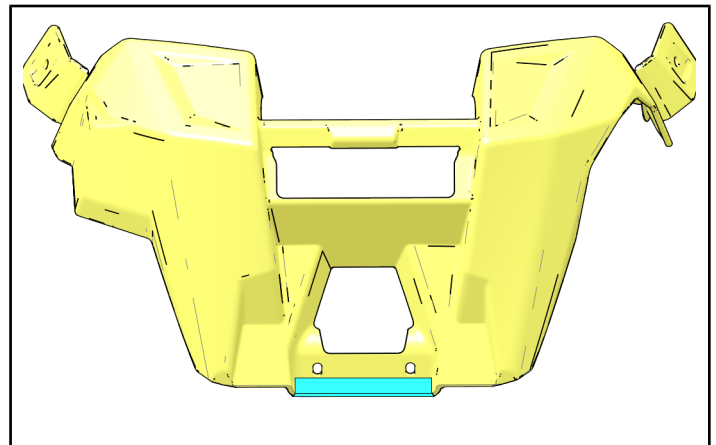
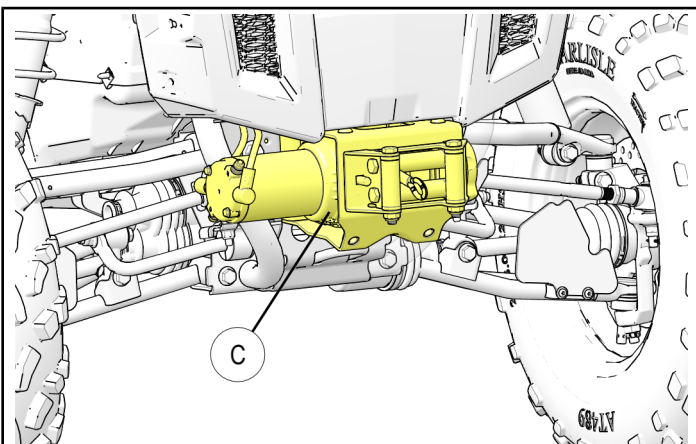
Winch cover fascia plate is used only for Ace 500/570 models and not used for Ace 900 models.

MOUNT PLATE INSTALLATION

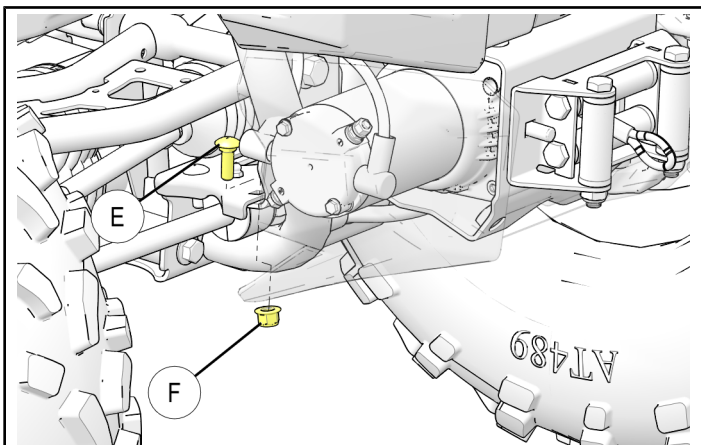
1. Remove four screws (A) holding front lower fascia (B) in place as shown. Remove front lower fascia (B) from vehicle. Retain four screws (A) for reuse.



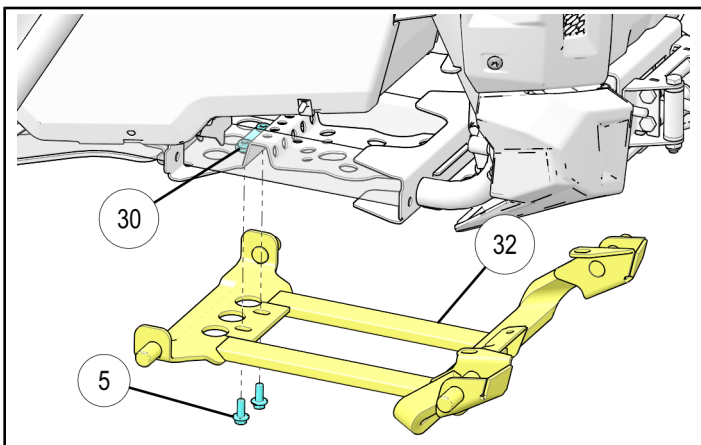
2. Install winch kit (C) onto the vehicle. Refer to winch kit instructions for winch installation.



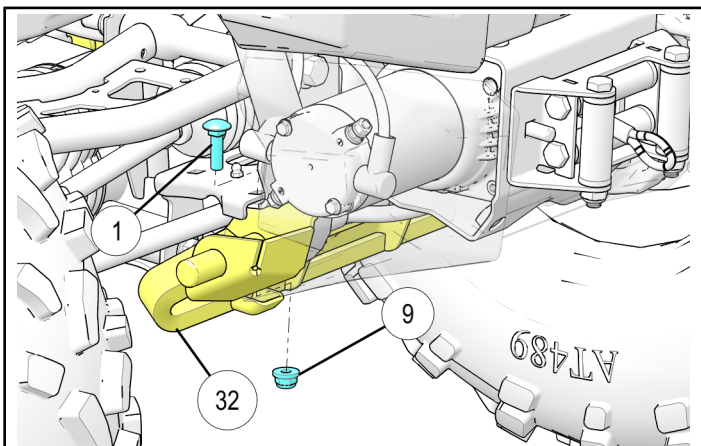
4. Remove existing screw (E) and nut (F) from LH side of vehicle. Repeat on other side.



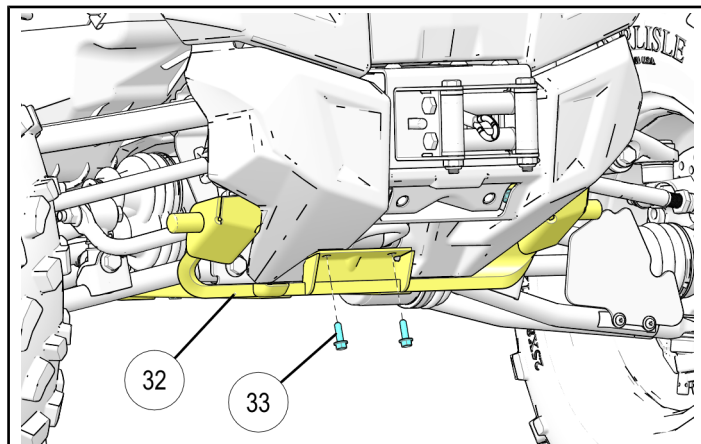
5. Position the mount plate 32 under vehicle chassis and tightening plate 30 over the skid plate by aligning holes as shown. Install screws from bottom side attaching mount plate 32 and tightening plate 30 to chassis. Do not tighten hardware at this time.



6. Attach front of mount plate 32 to chassis and install carriage bolt 1 and nut 9 on both the sides of vehicle. Do not tighten hardware at this time.



7. Install two screws 33 from bottom side passing through mount plate 32 and winch cover (D). Do not tighten hardware at this time.



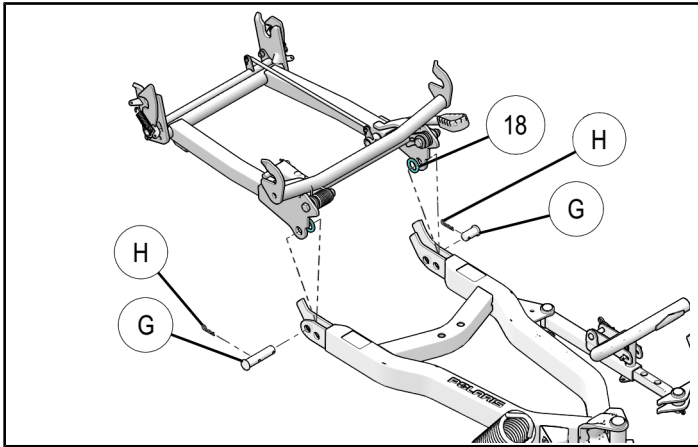
8. Fully tighten all hardware starting by front lower screws 33, then rear screws 5, and finally front side screws 1.

WINCH LINK ASSEMBLY

Refer to the Plow Frame Kit (PN 2879630) installation guide for winch link assembly and proper height adjustment procedures.

HOOK-UP ASSEMBLY

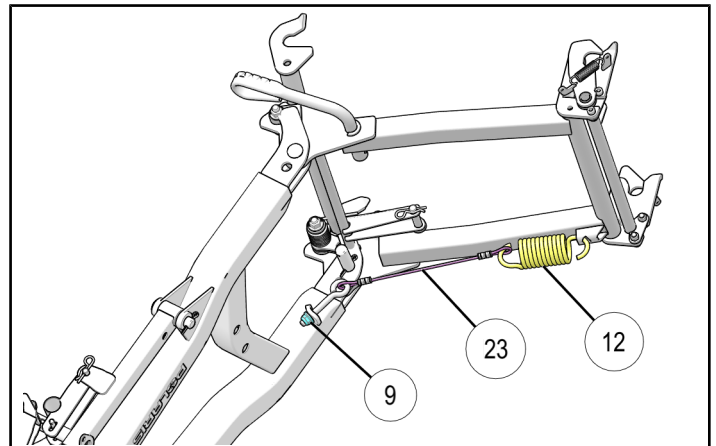
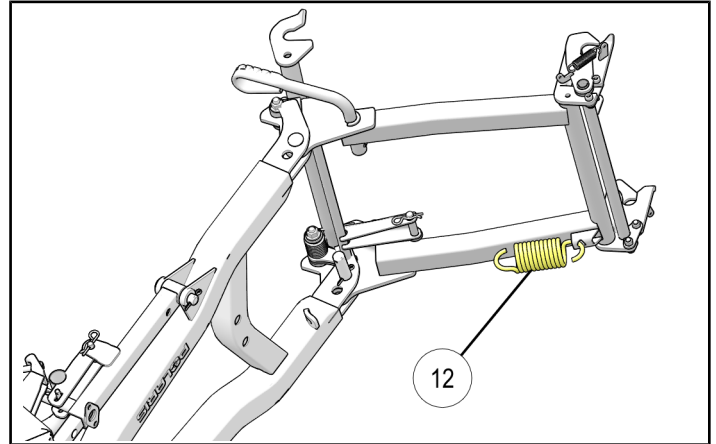
1. Assemble hook up assembly to push frame using two pins (G) and two cotter pins (H) supplied in the push frame kit. Insert one washer (18) between hook up and frame on each side.



2. Place tension spring (12) in the hook up assembly as shown. Insert adjustment wire (23) in open end of the spring (12) then insert the eyebolt in the eyelet of push frame and fasten using one nylon flange nut (9).

IMPORTANT

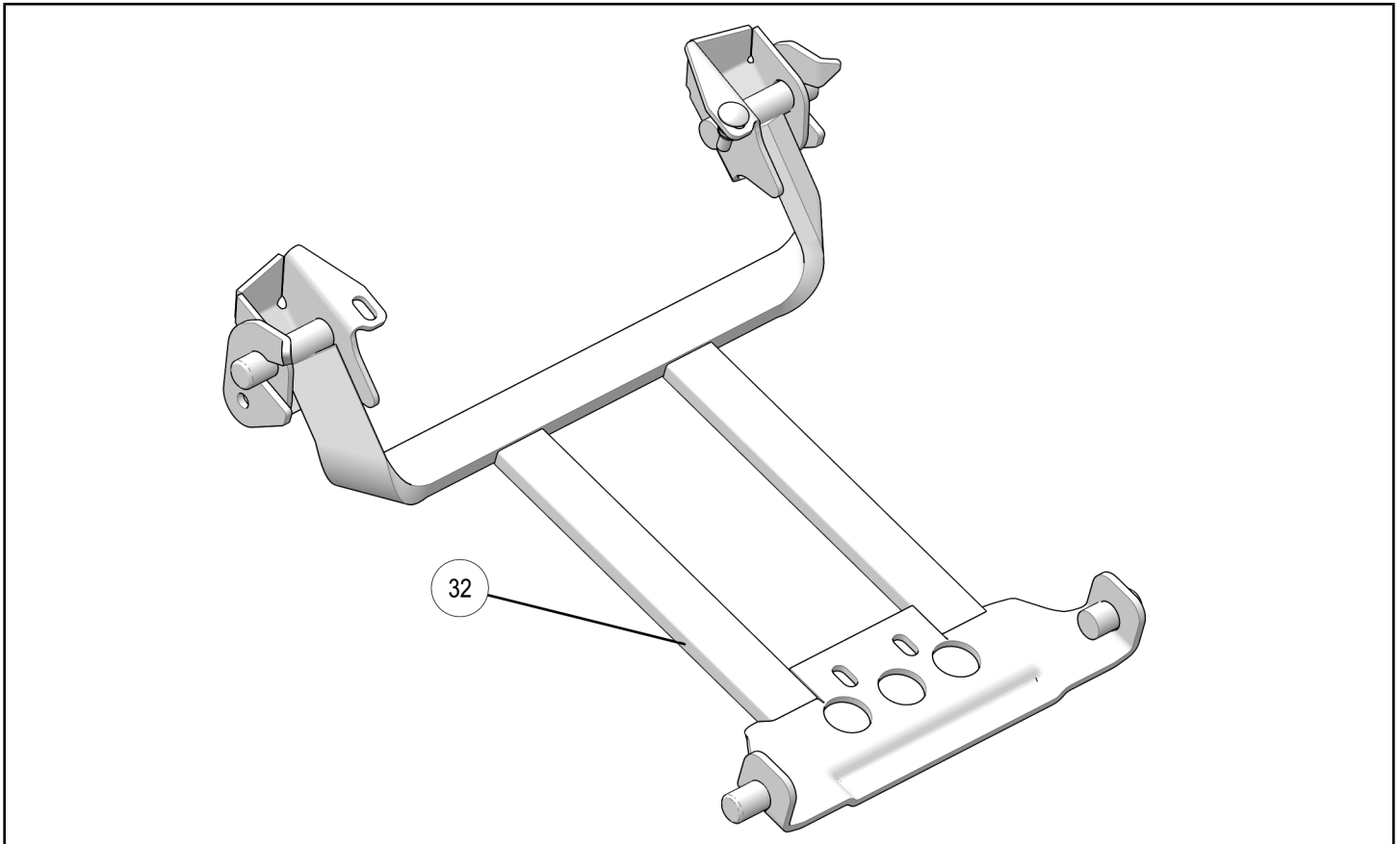
Use a screwdriver to hold eyebolt while tightening the nut to avoid twisting steel cable.



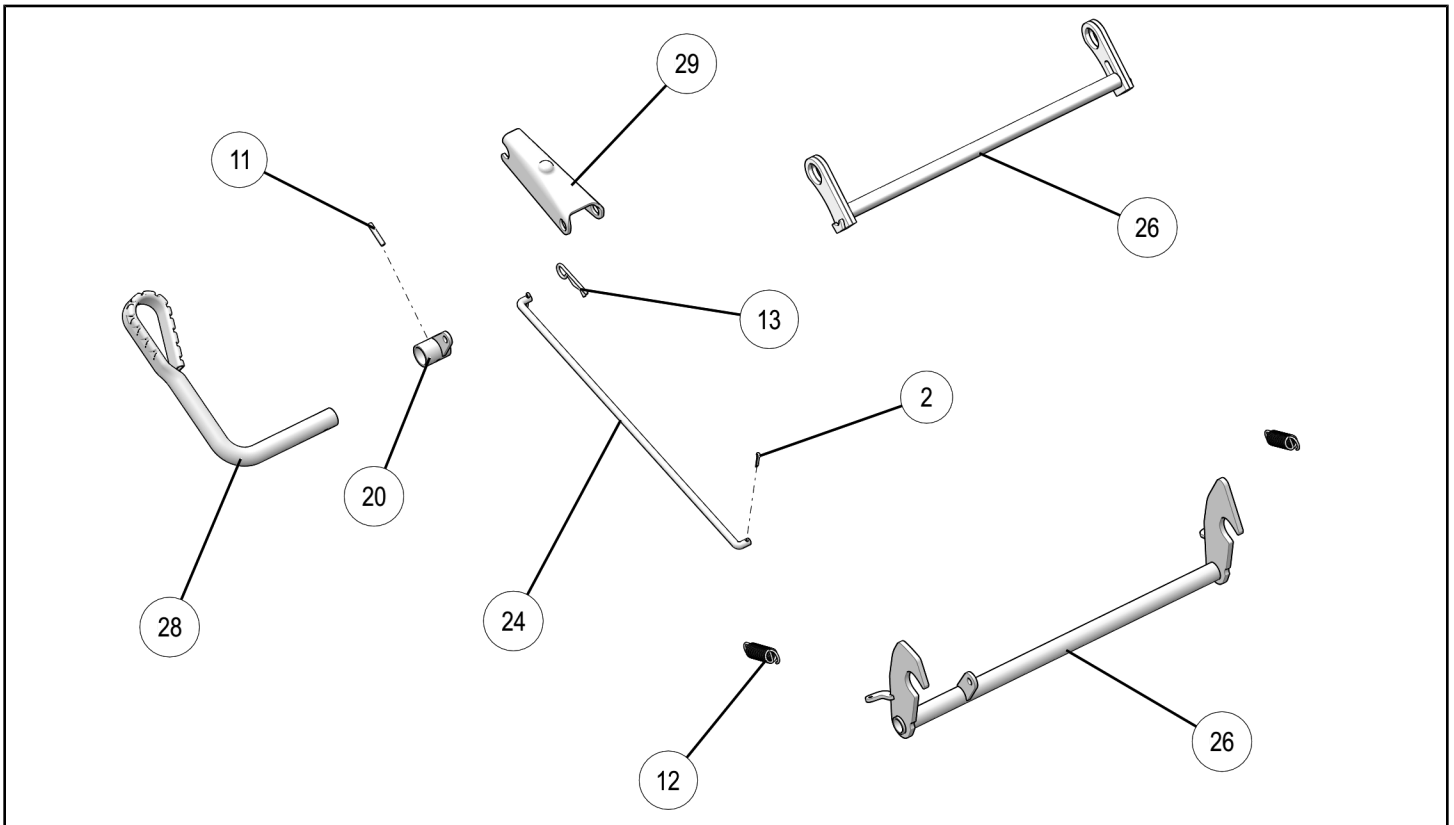
HARDWARE

See table on Pages 1 and 2 for necessary part descriptions.

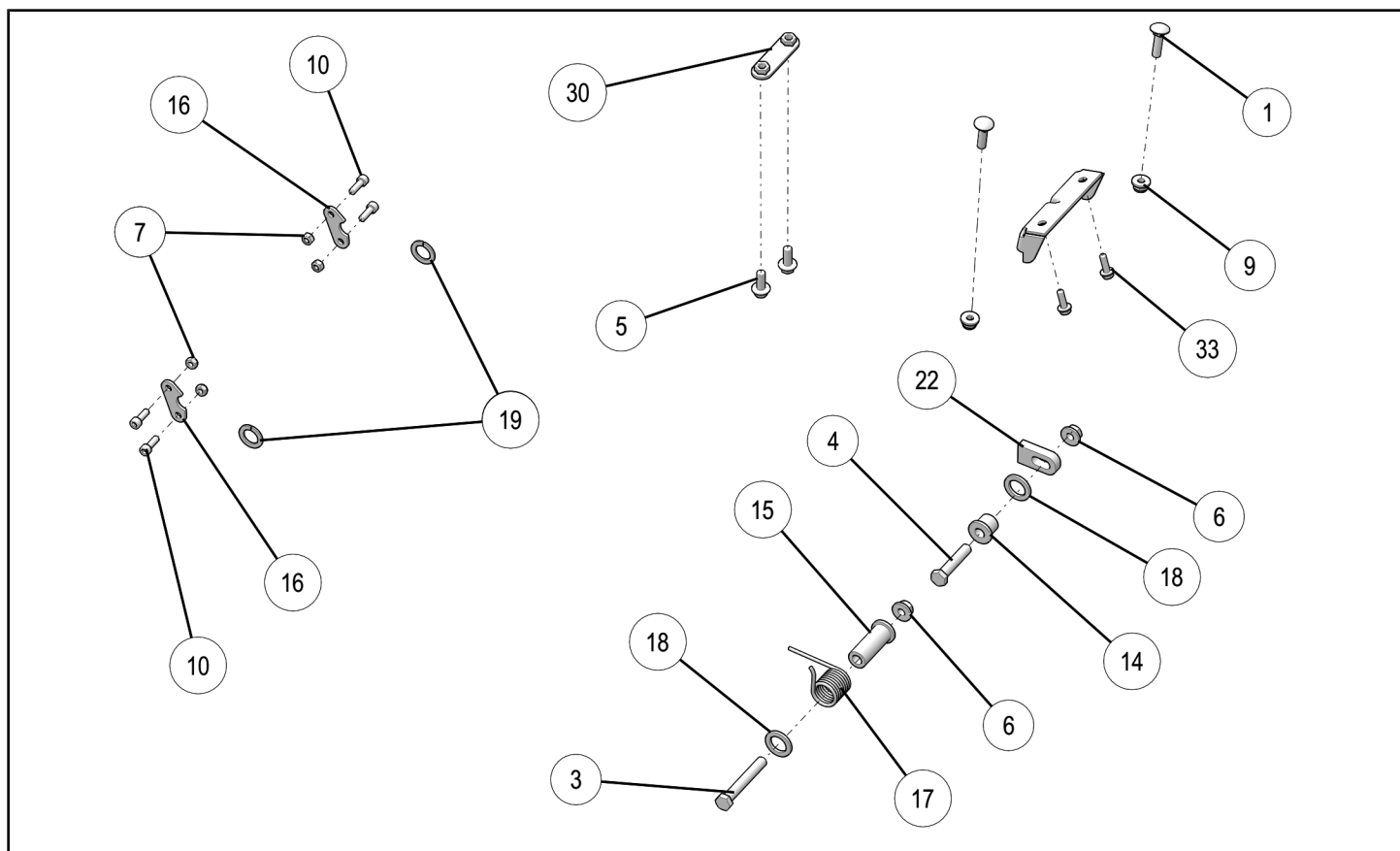
Ace Mount Plate Kit (PN 2205388)



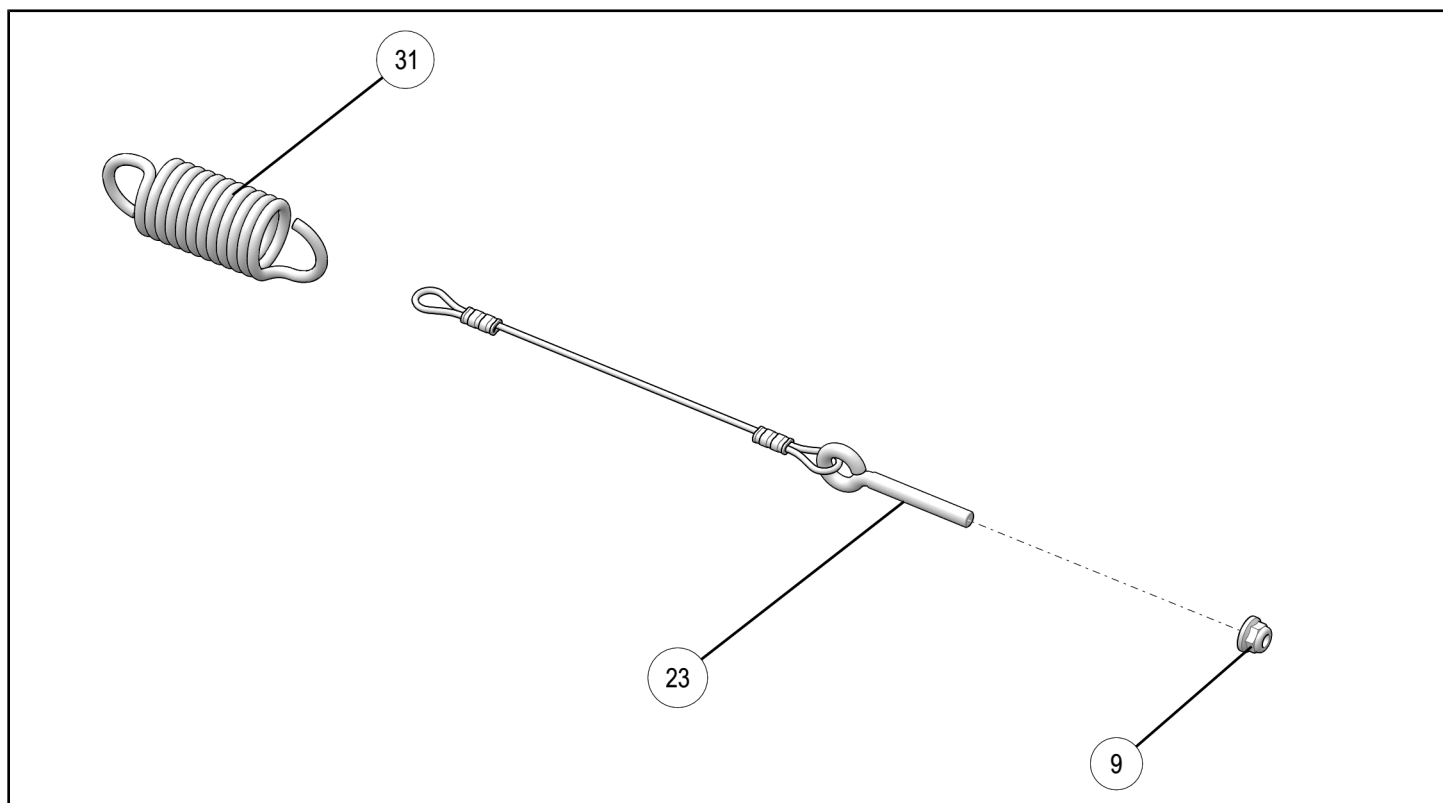
Ace Glacier Pro Latch Kit (PN 2205067)



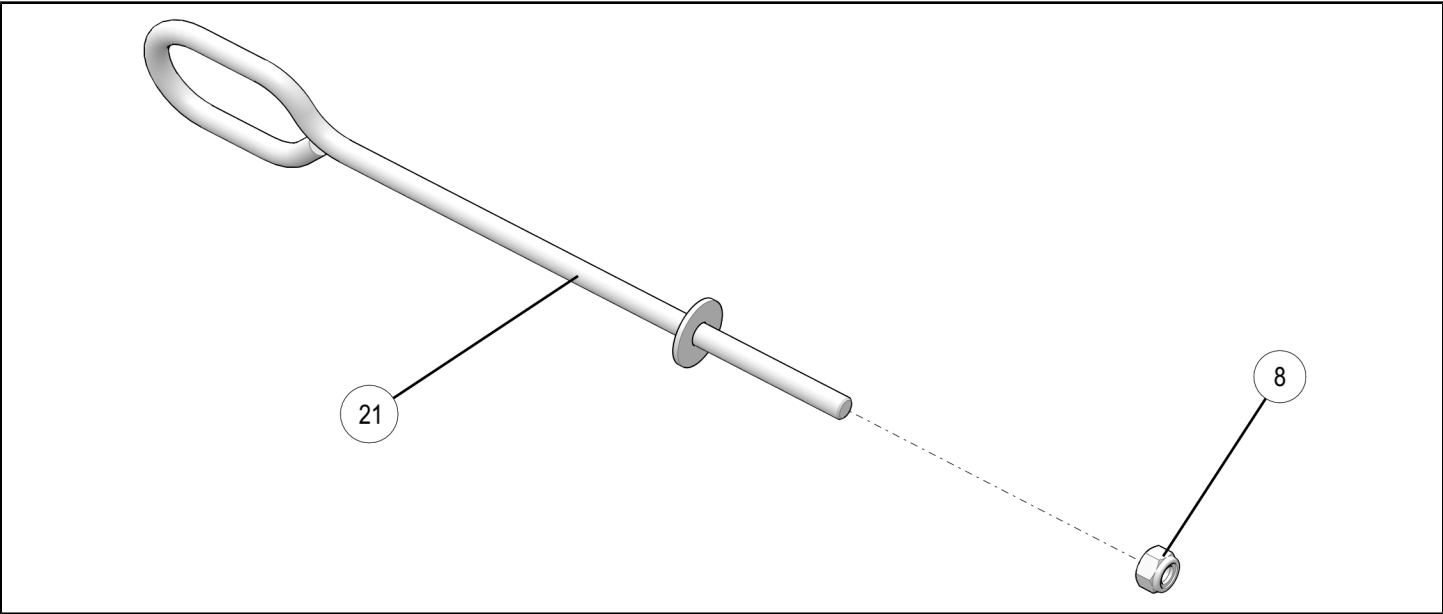
Ace Hardware Kit (PN 2205695)



Spring and Cable Kit (PN 2205696)



Winch Link Kit (PN 2205384)



Mount Plate Hardware Kit (PN 2206415)

