

# FRONT RACK KIT



**P/N 2882321**

## APPLICATION

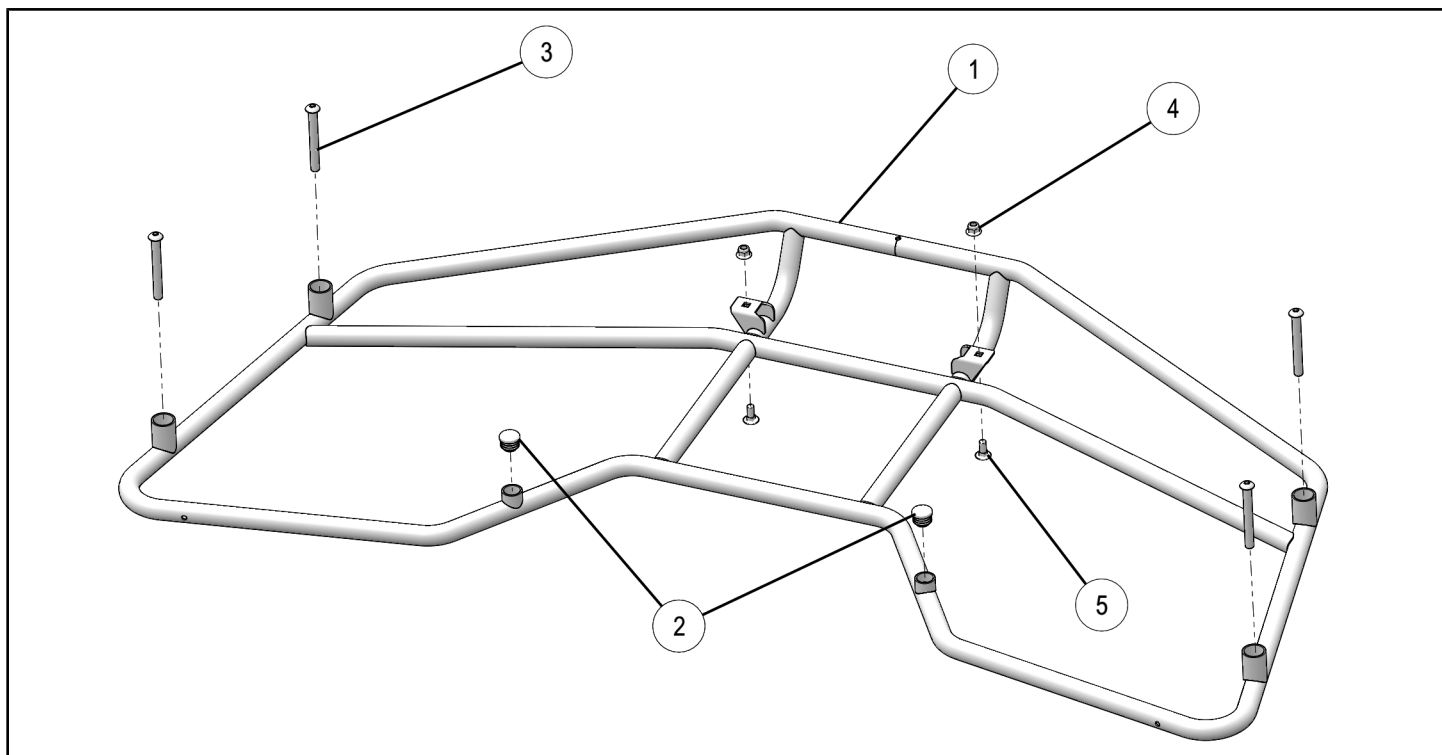
Verify accessory fitment at [Polaris.com](http://Polaris.com).

## BEFORE YOU BEGIN

Read these instructions and check to be sure all parts and tools are accounted for. Please retain these installation instructions for future reference and parts ordering information.

## KIT CONTENTS

This Kit includes:



REF	QTY	PART DESCRIPTION	PART NUMBER
1	1	Front Rack, Weld	1022583-458
2	2	Barbed Plug, 0.625"	7081085
3	4	Screw, Hex Head - 5/16-18 X 2.75	7515385
4	2	Screw, Carriage - M6 X 16	7520194
5	2	Nut, Hex Flange - M6 X 1.0	7547453
	1	Instructions	9927756

## TOOLS REQUIRED

- Safety Glasses
- Metric Wrench Set
- Metric Socket Set
- Drill and Drill Bit

## IMPORTANT

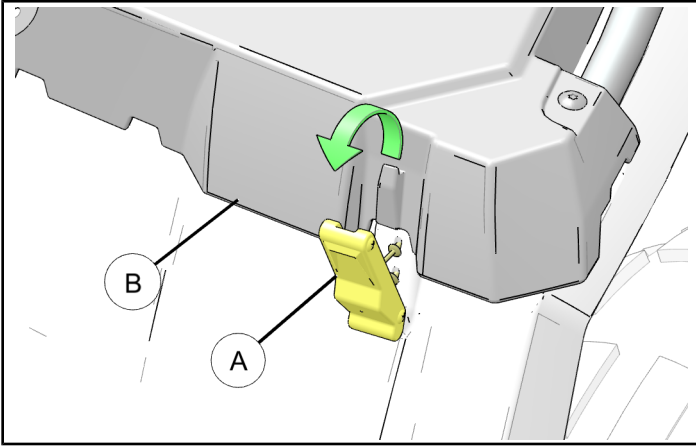
Your FRONT RACK KIT is exclusively designed for your vehicle. Please read the installation instructions thoroughly before beginning. Installation is easier if the vehicle is clean and free of debris. For your safety, and to ensure a satisfactory installation, perform all installation steps correctly in the sequence shown.

## ASSEMBLY TIME

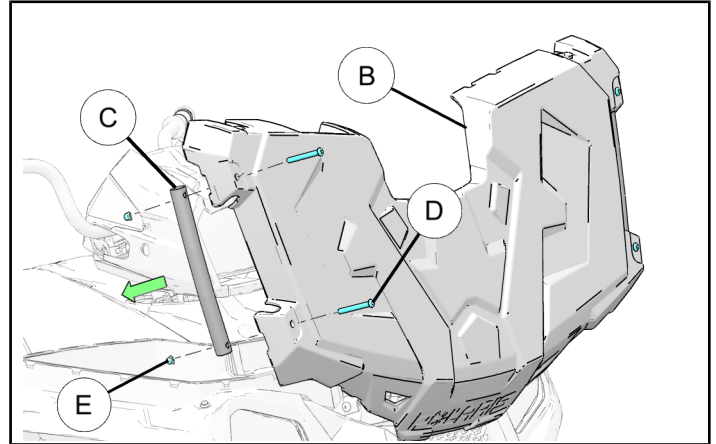
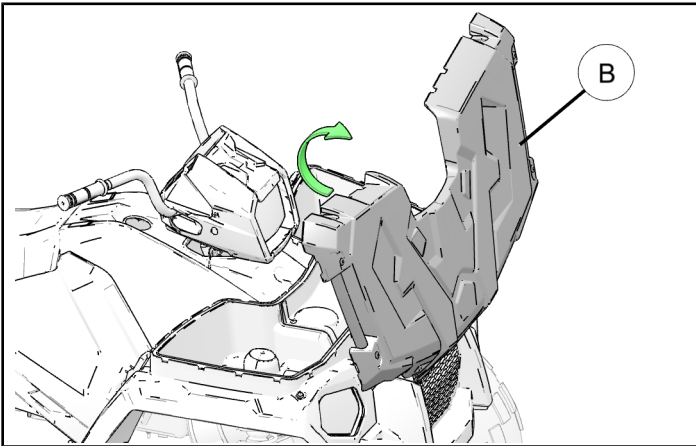
Approximately 30 minutes

## INSTALLATION INSTRUCTIONS

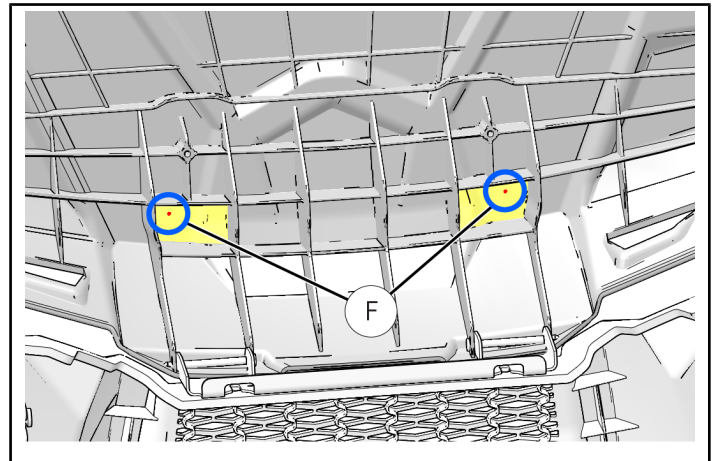
1. Shift vehicle transmission into "PARK". Turn key to "OFF" position and remove from vehicle.
2. Detach the rubber latches (A) from both sides of the front box cover (B).
4. Remove the tube support (C) from the front box cover (B) by removing two existing screws (D) and nuts (E). Discard screws and nuts. Repeat the same on other side.



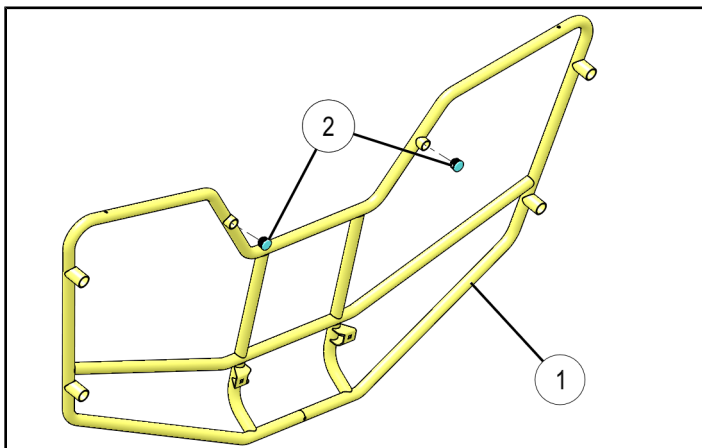
3. Open the front box cover (B) as shown.



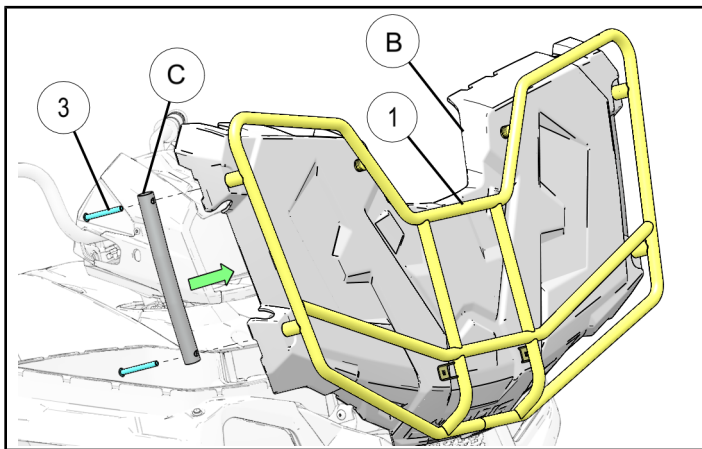
5. Using drill bit, drill two holes into the box cover (B) through existing indents (marked in red) (F).



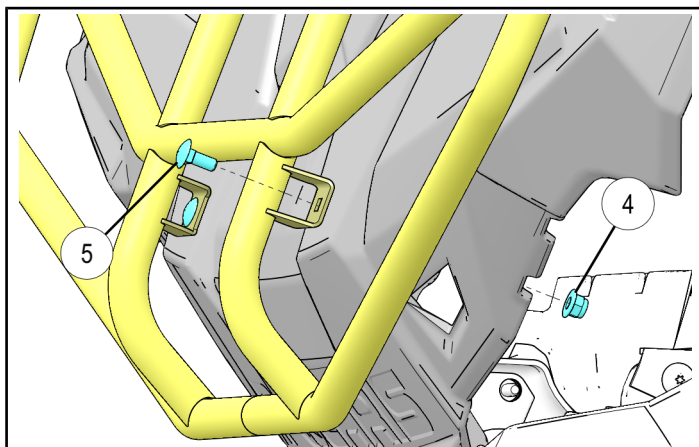
6. Install two barbed plugs (2) onto the front rack assembly (1).



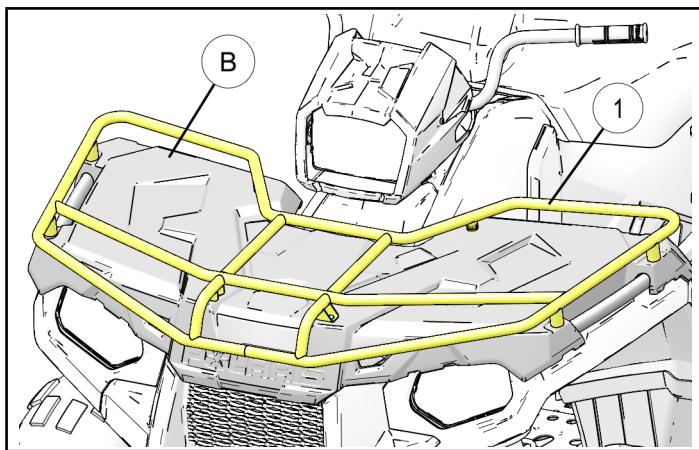
7. Mount the rack assembly (1) onto the front box cover (B) by aligning holes as shown. Install two screws (3) from bottom into the rack assembly through the support bar (C). Don't tighten screws at this time.



8. Install two screws (5) passing through rack assembly bracket and previously drilled holes on front box cover (B) as shown. Install two nuts (4) from underside. Tighten the screws until snug.



9. Tighten screws (3) at this time until snug.  
10. Close box cover (B) along with front rack assembly (1).



11. Secure the front box cover (B) with rubber latches (A).