

SOFT TOP ROOF KIT

P/N 2879898



Application

MY 14 Ranger 900 XP CREW

Before you begin, read these instructions twice and check to be sure all parts and tools are accounted for. Please retain these installation instructions for future reference and parts ordering information.

This Kit Includes:

<u>Qty</u>	<u>Part Description</u>	<u>Part Number</u>
1.....	Roof, Canvas	
1.....	Metal Header Strip	
4.....	M8 Nylok Nut	
4.....	Snap	
4.....	#6 Machine Screws	
4.....	#6 Nut	
4.....	M8 Bolt, Allen Head	
1.....	Instructions	9924746

Tools Required:

Socket	Allen Wrenches	Metric End Wrenches
Phillips Screwdriver		

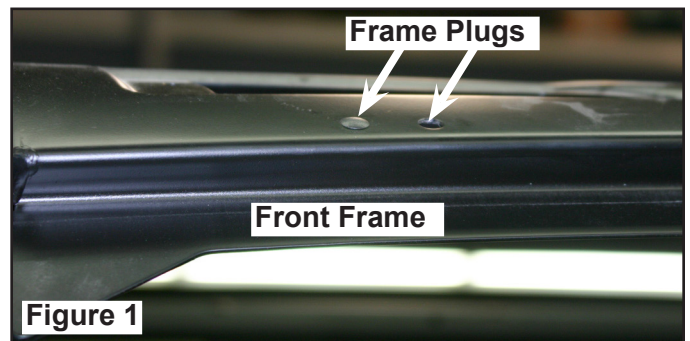
Additional Service Kits Available to Order:

<u>Qty</u>	<u>Part Description</u>	<u>Part Number</u>
1.....	KIT-SVC, ROOF,HDWR,BESTOP,TTN (Includes hardware for header and snaps for rear of roof)	2204809
1.....	KIT-SVC, ROOF,HEADER (Includes front stamped section of roof and hardware)	2204808
1.....	KIT-SVC, ROOF BOW, BSTP, TTC	2205466
1.....	KIT-SVC, ROOF ONLY, BSTP, TTC	2205465

IMPORTANT: For your safety, and to ensure a satisfactory installation, perform all installation steps correctly in the sequence as shown on the attached instructions. Please wear safety glasses while performing the steps in the following instructions.

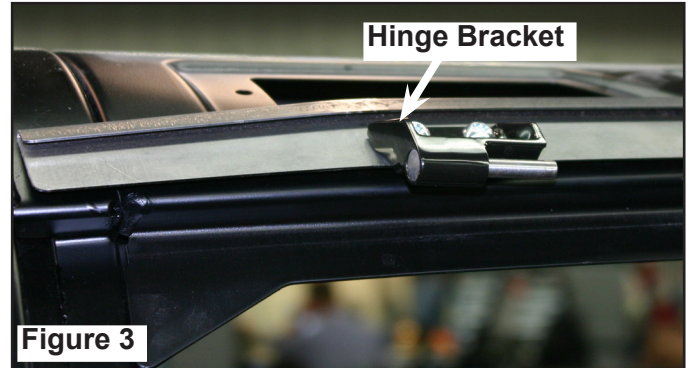
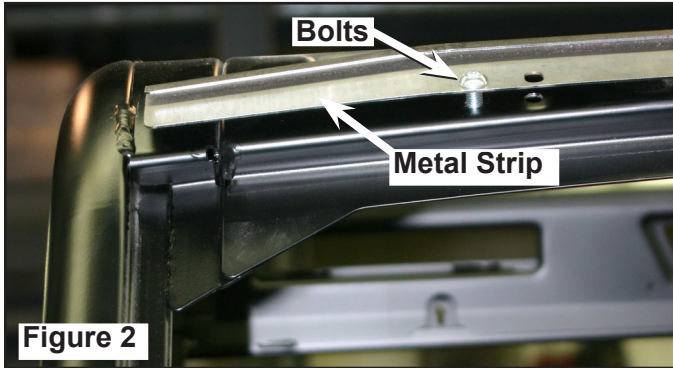
INSTALLATION INSTRUCTIONS

1. Remove four frame plugs from front of vehicle, two on each side. Figure 1.

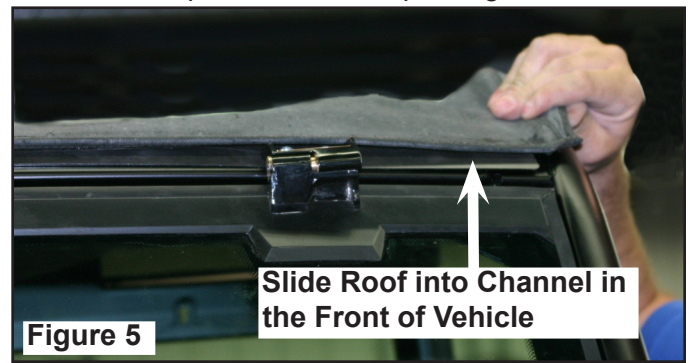
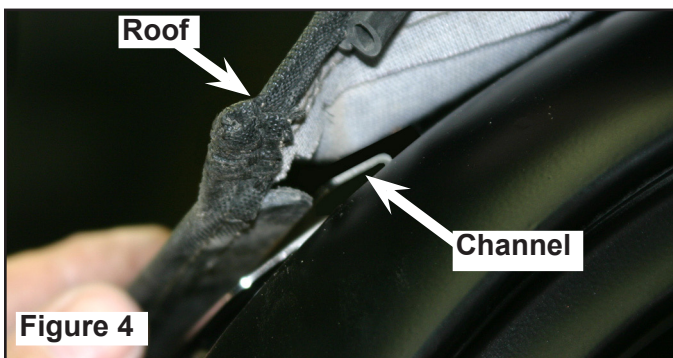


- Remove protective film from adhesive foam on metal header strip. Align holes in metal strip with the holes in frame. Install metal strip onto front of vehicle with four bolts using a Allen wrench. Figure 2.

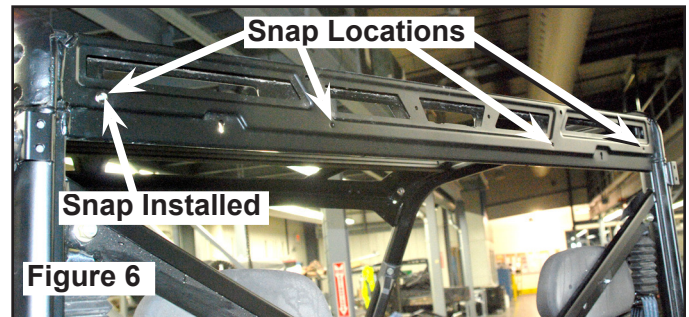
IMPORTANT: If installing roof with a tip out windshield, set the windshield in place on vehicle, install metal strip then hinge bracket, fasten with bolts and nuts. Figure 3.



- Hook the plastic flap on the front of the canvas roof into the metal strip installed in Step 2. Figures 4 and 5.



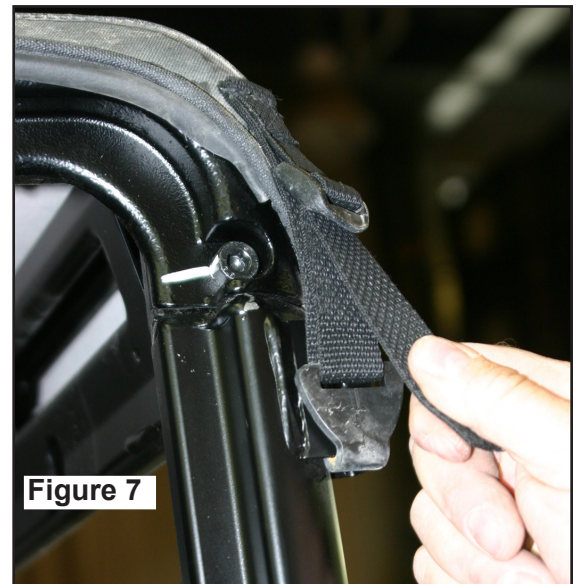
- If not using the canvas rear panel, install the metal snaps using #6 machine screws and #6 nylok nuts using metric end wrenches and a Phillips screwdriver. The holes are located in the rear-upper frame of the vehicle and correspond to the snap location on the roof. Figure 6.



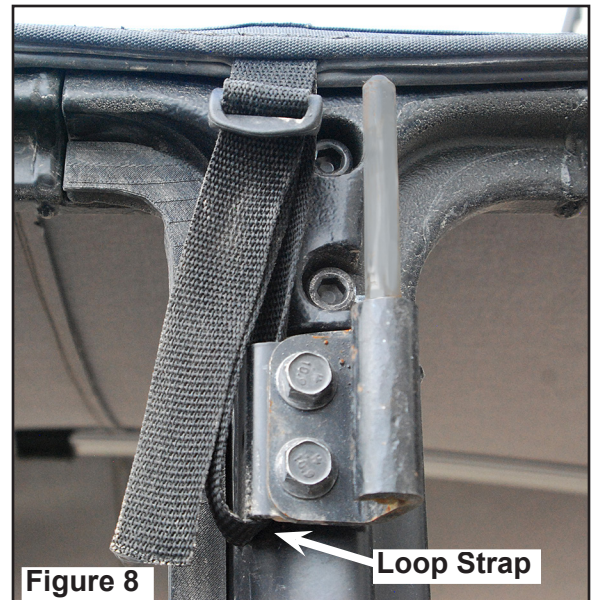
- Set metal arch (Bow) in place. Rear end of bow has a snap that corresponds to two tabs and a snap on the inside rear center of the roof. Front of bow should be placed on top of metal stamping just behind the front channel, and placed in the center of the vehicle.

Once in place, connect snaps on roof to rear of bow.

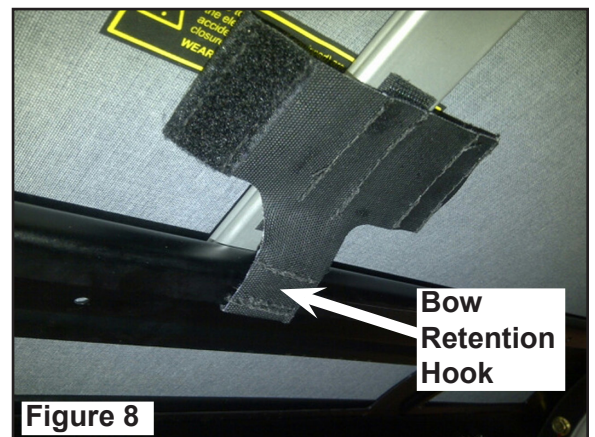
- Slide the top hook into the lower part of buckle on C-pillar upper hinge bracket on each side of vehicle. Tighten the buckles until roof top is tight. Figure 7.



7. Loop the middle strap on the canvas top through the upper hinge bracket on the B-pillar and feed through plastic clip. Tighten strap. Figure 8.



8. Install the bow retention hook to the front of the bow as shown in Figure 9.
9. Be sure that there is enough tension on the strap to keep the bow from shifting and falling down. If running the top alone, snap cover into place.
10. If using the rear panel accessory, install rear panel kit according to instructions and attach roof to snaps on rear panel.



**Ranger 900 XP Shown with Soft Doors,
Top and Rear Panel Installed**