

ROCK SLIDER KIT



P/N 2882530

APPLICATION

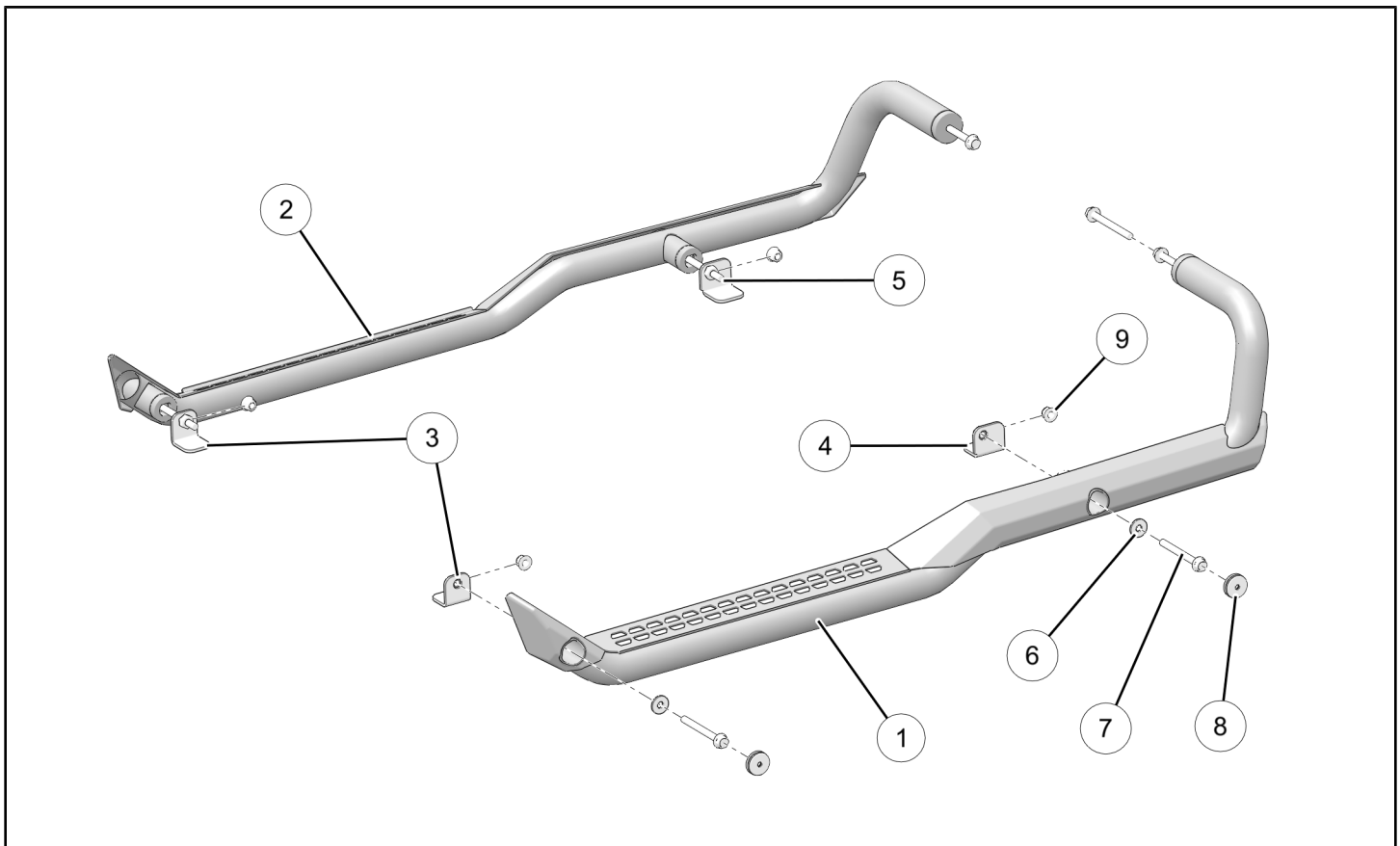
Verify accessory fitment at Polaris.com.

BEFORE YOU BEGIN

Read these instructions and check to be sure all parts and tools are accounted for. Please retain these installation instructions for future reference and parts ordering information.

KIT CONTENTS

This Kit includes:



REF	QTY	PART DESCRIPTION	PART NUMBER
1	1	Rock Slider, LH	-
2	1	Rock Slider, RH	-
3*	2	Retention Angle, Front	-
4*	1	Retention Angle, Mid, LH	5264410
5*	1	Retention Angle, Mid, RH	5264430
6*	4	Washer - 0.327 X 0.875 X 0.090	7556341
7*	6	Screw, Hex Flange - M8 X 1.25 X 80	7519217
8*	4	Plug, 1.25	5450653

REF	QTY	PART DESCRIPTION	PART NUMBER
9*	4	Nut, Hex Flange, Locking- M8 X 1.25	7547332
	1	Instructions	9927798

Items marked (*) are included in Hardware Kit PN 2206965.

TOOLS REQUIRED

- Safety Glasses
- Drill
- File, Round (or equivalent)
- Hole Saw, 1–3/4 inch (44 mm)
- Pry Tool
- Socket Set, Metric
- Torque Wrench

IMPORTANT

Your Rock Slider Kit is exclusively designed for your vehicle. Please read the installation instructions thoroughly before beginning. Installation is easier if the vehicle is clean and free of debris. For your safety, and to ensure a satisfactory installation, perform all installation steps correctly in the sequence shown.

ASSEMBLY TIME

Approximately 20 minutes

INSTALLATION INSTRUCTIONS

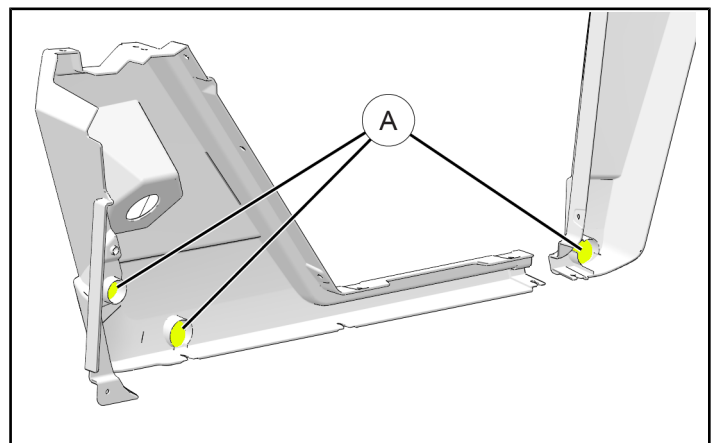
1. Shift vehicle transmission into “PARK”. Turn key to “OFF” position and remove from vehicle.
2. Use hole saw to cut three openings in fender panels at marked locations **A**, then file hole edges as required. Ensure holes are accurately centered to prevent damage to hole rib on inboard side of panels.

IMPORTANT

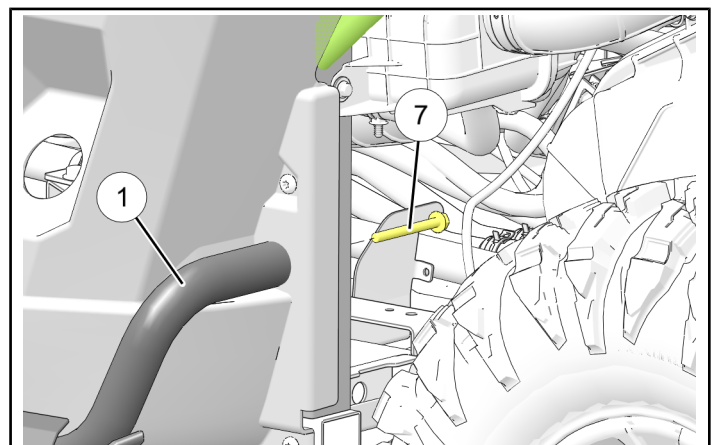
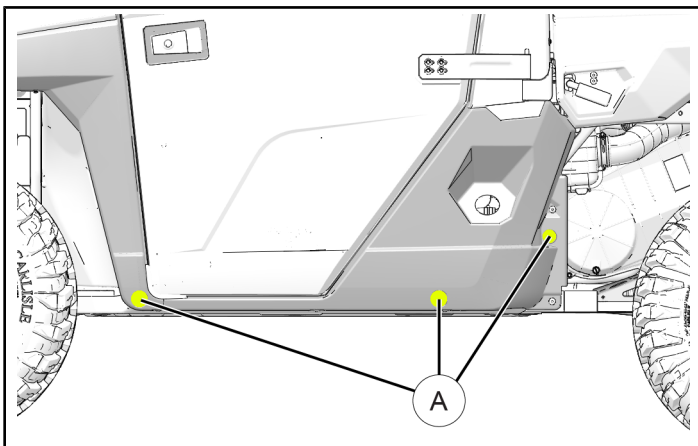
Control drill depth to prevent damage to underlying structure or components.

NOTE

Fenders do not need to be removed to perform this step.



3. Loosely install rear end of LH rock slider **1** to vehicle frame using screw **7**.



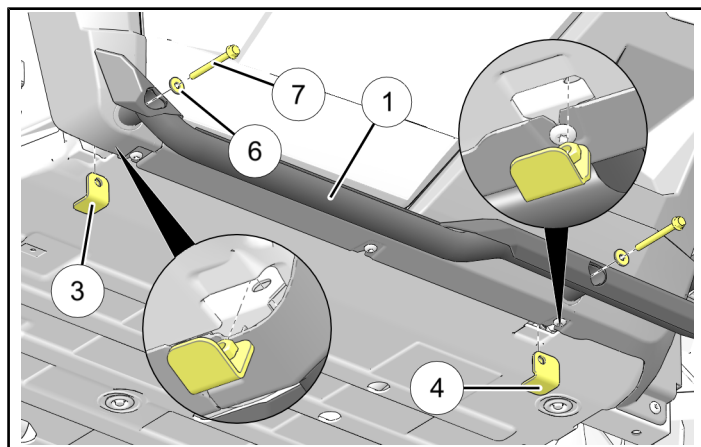
4. Lift front end of LH rock slider ① into position, then loosely install one each screw ⑦ and washer ⑥ through rock slider and vehicle frame into front retention angle ③. Repeat for LH mid retention angle ④.

Ensure proper angle is installed:

- **FRONT** retention angles ③ are symmetrical for LH/RH sides, nuts are centered, no corner notches
- **MID** retention angles, LH ④ and RH ⑤, are not symmetrical, nuts are off-center, notched corners

NOTE

Retention angles are provided to ease installation. However, slight variations in vehicle assembly may prevent one or more angles from aligning with corresponding screw. If this occurs, replace angle with nut ⑨.

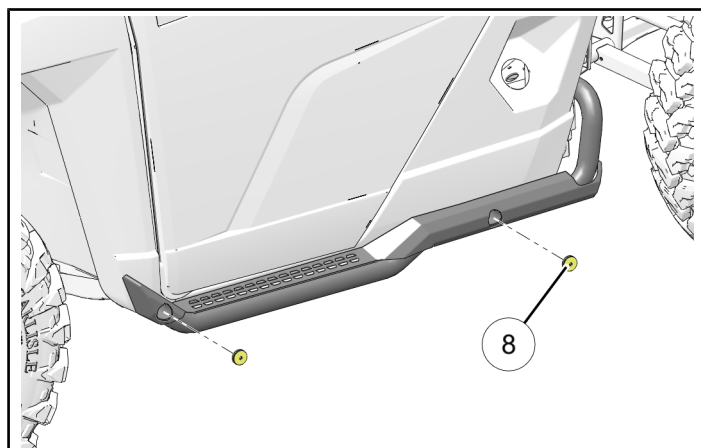


5. Torque all screws ⑦ to specification.

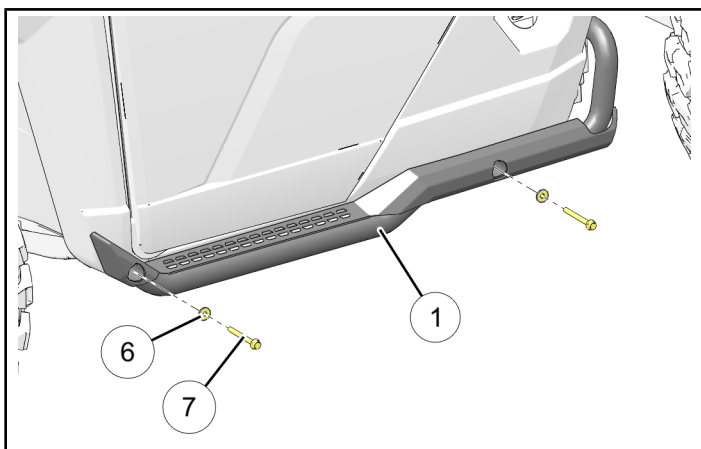
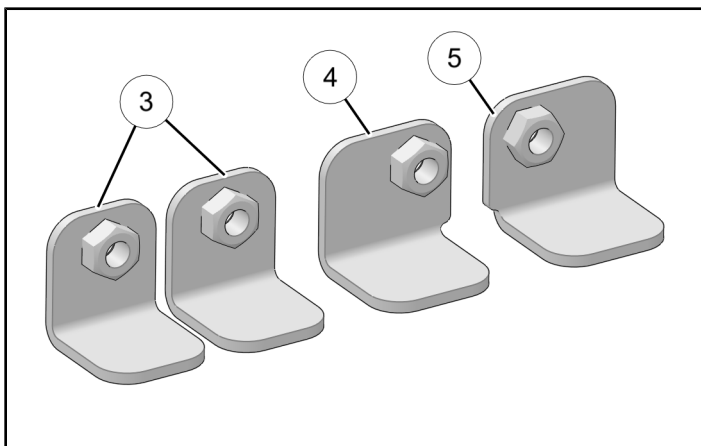
TORQUE

16 ± 2 ft. lbs. (22 ± 2 Nm)

6. Install two plugs ⑥.



7. Repeat Steps 2–6 for RH side using RH rock slider ② and RH mid retention angle ⑤.



FEEDBACK FORM

A feedback form has been created for the installer to provide any comments, questions or concerns about the installation instructions. The form is viewable on mobile devices by scanning the QR code or by clicking [HERE](#) if viewing on a PC.

FEEDBACK FORM

