

ROCK SLIDER KIT



P/N 2882530

APPLICATION

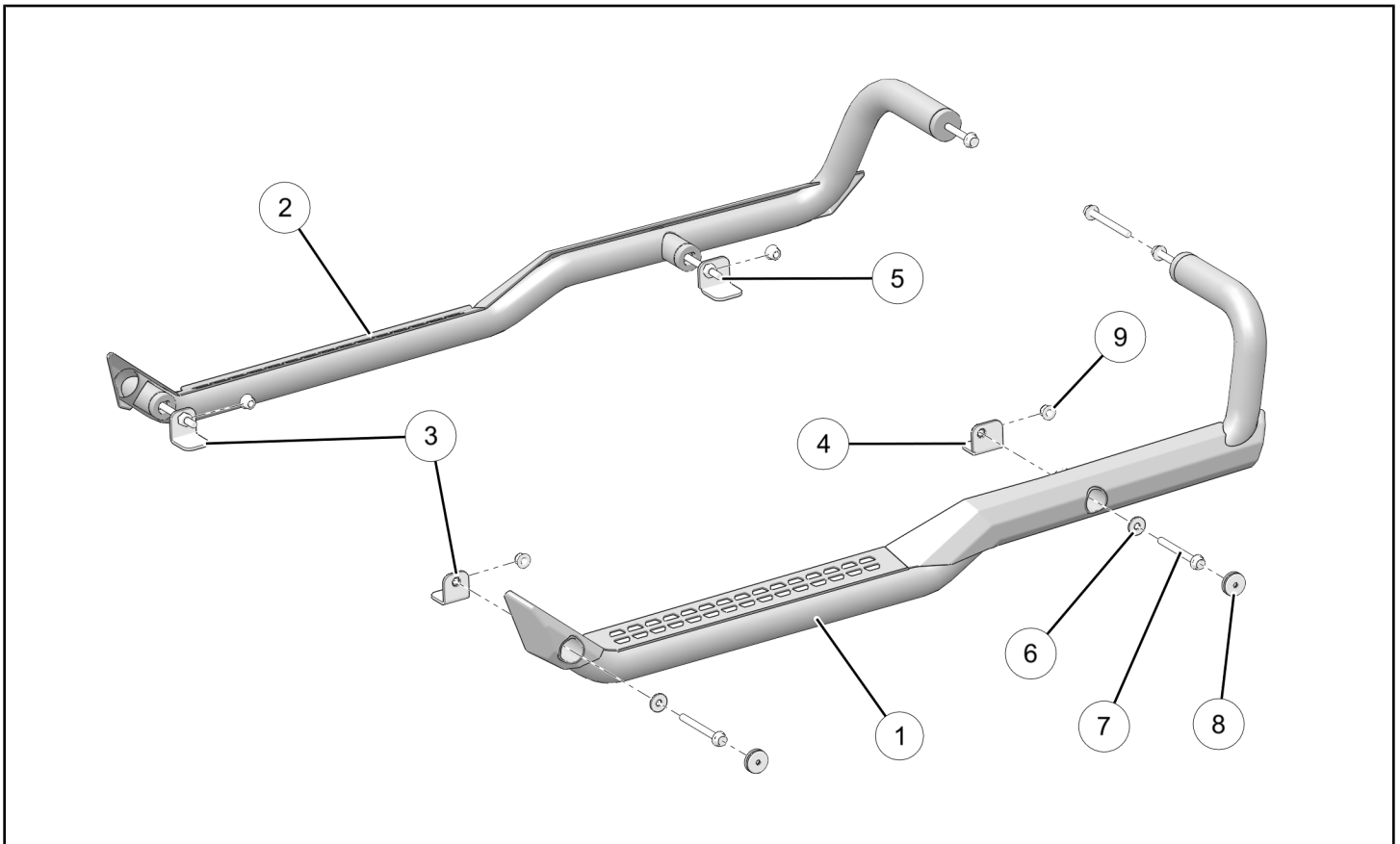
Verify accessory fitment at Polaris.com.

BEFORE YOU BEGIN

Read these instructions and check to be sure all parts and tools are accounted for. Please retain these installation instructions for future reference and parts ordering information.

KIT CONTENTS

This Kit includes:



REF	QTY	PART DESCRIPTION	PART NUMBER
1	1	Rock Slider, LH	-
2	1	Rock Slider, RH	-
3*	2	Retention Angle, Front	-
4*	1	Retention Angle, Left Rear	5264410
5*	1	Retention Angle, Right Rear	5264430
6*	4	Washer - 0.327 X 0.875 X 0.090	7556341
7*	6	Screw, Hex Flange - M8 X 1.25 X 80	7519217
8*	4	Plug, 1.25	5450653

REF	QTY	PART DESCRIPTION	PART NUMBER
9*	4	Nut, Hex Flange, Locking- M8 X 1.25	7547332
	1	Instructions	9927798

* Items included in Hardware Kit PN 2206965. Hardware kit is universal and contains additional parts needed for Crew Rock Slider Kit 2883398.

TOOLS REQUIRED

- Safety Glasses
- Deburring Tool
- Drill
- Hole Saw, 1–3/4 inch (44 mm)
- Pliers, Push Pin Rivet
- Socket Set, Metric
- Torque Wrench
- Wrench Set, Metric

IMPORTANT

Your Rock Slider Kit is exclusively designed for your vehicle. Please read the installation instructions thoroughly before beginning. Installation is easier if the vehicle is clean and free of debris. For your safety, and to ensure a satisfactory installation, perform all installation steps correctly in the sequence shown.

INSTALLATION INSTRUCTIONS

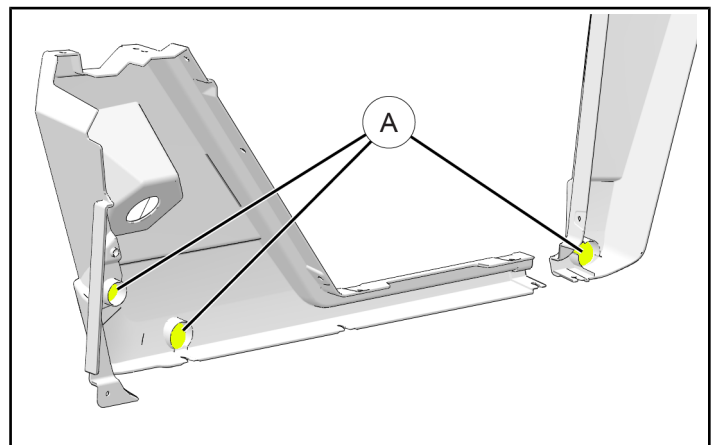
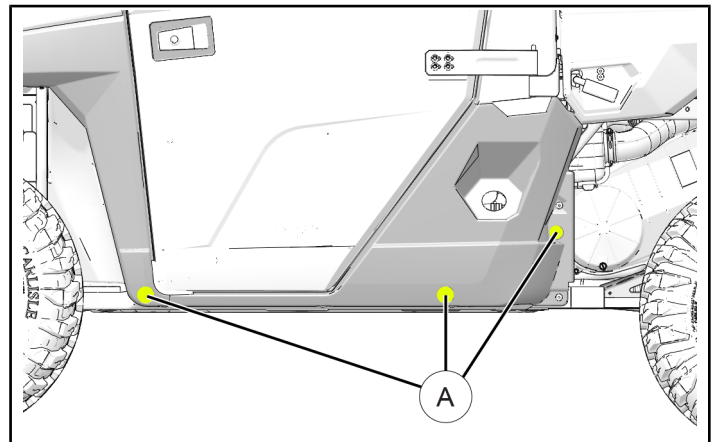
1. Shift vehicle transmission into “PARK”. Turn ignition switch to “OFF” position and remove key.
2. Use hole saw to cut three openings in fender panels at marked locations (A), ensuring holes are accurately centered to prevent damage to hole rib on inboard side of panels. Debur holes.

IMPORTANT

Control drill depth to prevent damage to underlying structure or components.

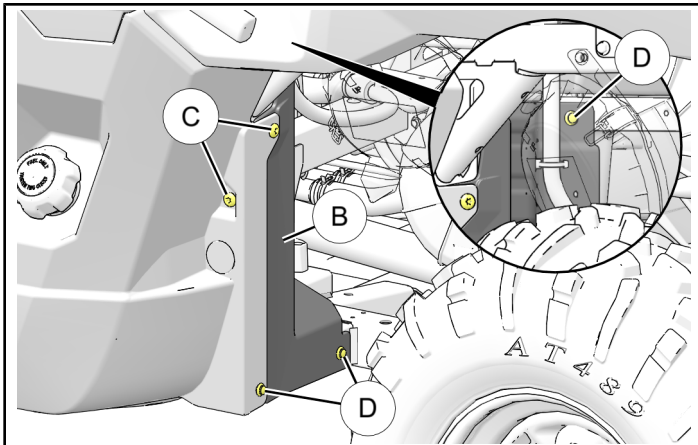
NOTE

Fenders do not need to be removed to perform this step. Fender interior shown for reference only.



- If installing to vehicle WITHOUT interior fender panel **B**, then proceed to Step 4.

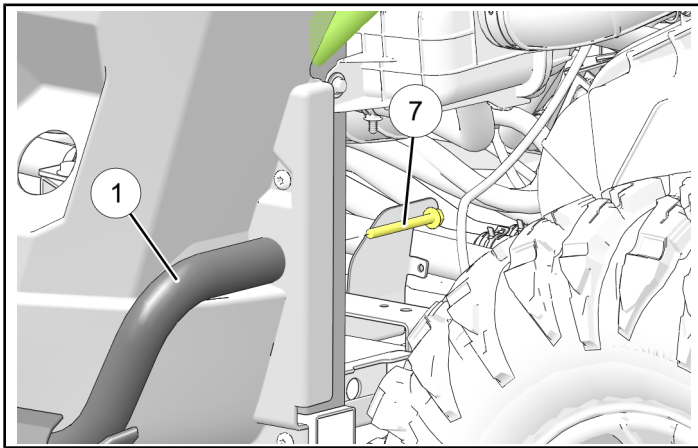
Otherwise, remove two screws **C** and three push-pin rivets **D**. Carefully move interior panel as required to gain access to vertical post (inboard side). Retain fasteners.



- Loosely install rear end of LH rock slider **1** to vertical post using screw **7**.

NOTE

Interior fender panel hidden for clarity.



- Lift front end of LH rock slider **1** into position, then loosely install one each screw **7** and washer **6** through rock slider and vehicle frame into front retention angle **3**.

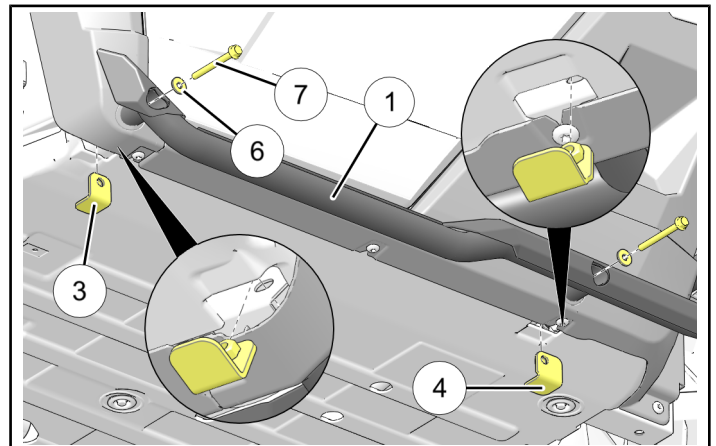
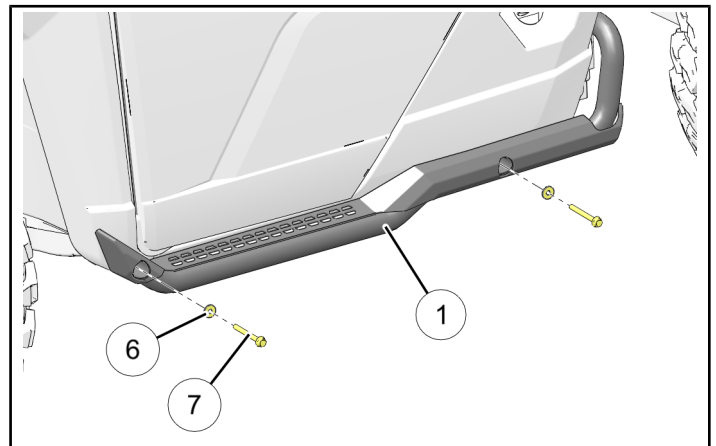
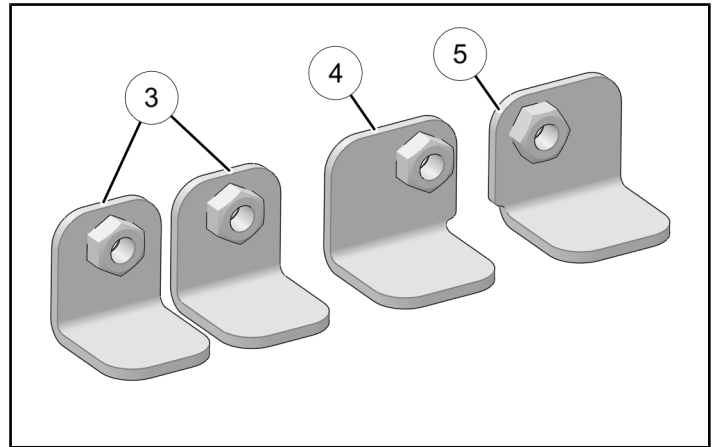
Repeat for rear end using left rear retention angle **4**.

Ensure proper angle is installed:

- FRONT** retention angles **3** are smaller and nuts are centered
- REAR** retention angles, LH **4** and RH **5**, are larger and nuts are off-center

NOTE

Retention angles are provided to ease installation. However, slight variations in vehicle assembly may prevent angle from aligning with mounting screw. If this occurs, replace angle with nut **9**.

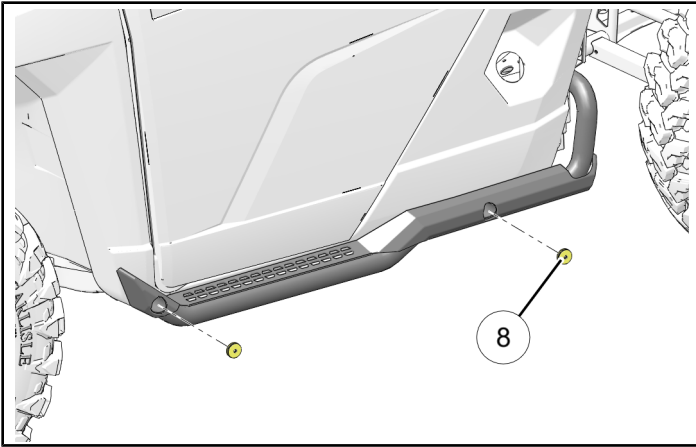


- Torque all screws **7** to specification.

TORQUE

10 ft. lbs. (14 Nm) \pm 10%

7. Install two plugs ⑧.



8. If fasteners were removed from interior fender panel (see previous Step 3), then reinstall fasteners at this time.
9. Repeat Steps 2–8 for RH side using RH rock slider ② and right rear retention angle ⑤.

FEEDBACK FORM

A feedback form has been created for the installer to provide any comments, questions or concerns about the installation instructions. The form is viewable on mobile devices by scanning the QR code or by clicking [HERE](#) if viewing on a PC.

