

FRONT HD BUMPER KIT



P/N 2884123

APPLICATION

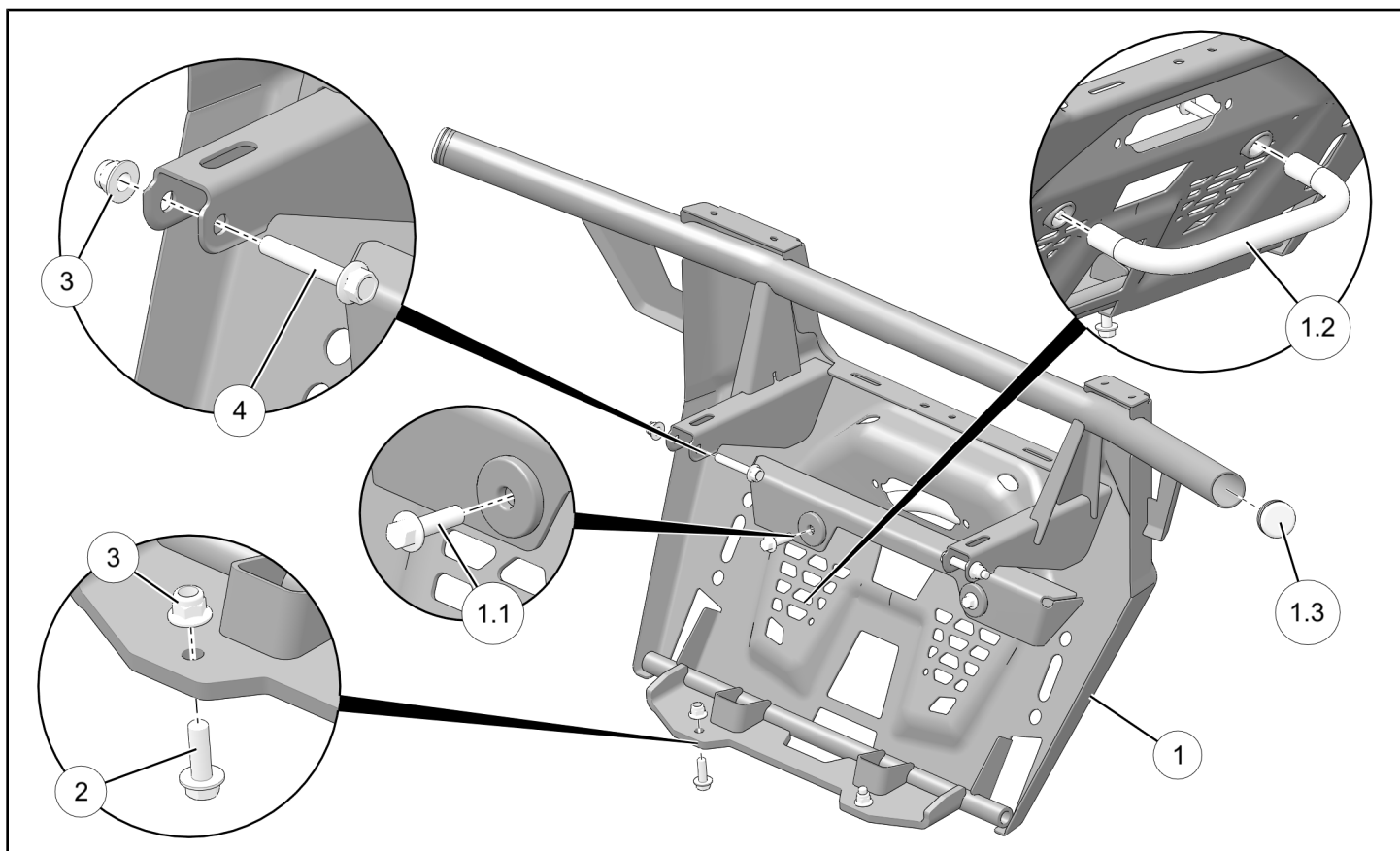
Verify accessory fitment at [Polaris.com](https://www.polaris.com).

BEFORE YOU BEGIN

Read these instructions and check to be sure all parts and tools are accounted for. Please retain these installation instructions for future reference and parts ordering information.

KIT CONTENTS

This Kit includes:



REF	QTY	PART DESCRIPTION	PART NUMBER
1	1	Bumper, Front HD (include items 1.1–1.2)	-
1.1	2	- Screw, Hex Flange - M10 X 1.5 X 35	7518644
1.2	1	- Catch Weldment, Plow	1024680-458
1.3	2	- Plug, Tubing	5434191
2	2	Screw, Hex Flange - M10 X 1.25 X 30	7519059
3	4	Nut, Hex Flange, Locking - M10 X 1.25	7547333
4	2	Screw, Hex Flange - M10 X 1.25 X 60	7519210
	1	Instructions	9929522

TOOLS REQUIRED

- Safety Glasses
- *Screwdriver Set, Torx®
- Socket Set, Metric
- Torque Wrench
- Wrench Set, Metric

* Tool requirement dependent on specific installation.

IMPORTANT

Your Front HD Bumper Kit is exclusively designed for your vehicle. Please read the installation instructions thoroughly before beginning. Installation is easier if the vehicle is clean and free of debris. For your safety, and to ensure a satisfactory installation, perform all installation steps correctly in the sequence shown.

INSTALLATION INSTRUCTIONS

Before installation of your new HD front bumper, the existing front fascia or non-HD front bumper must be removed.

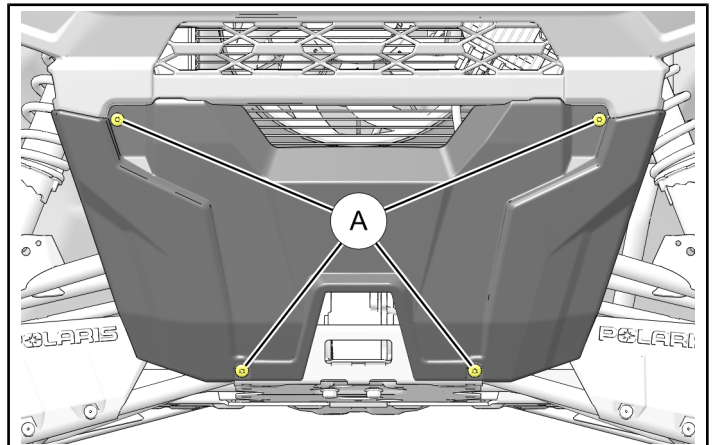
Select the appropriate procedure, then proceed to **INSTALL NEW HD FRONT BUMPER**.

NOTE

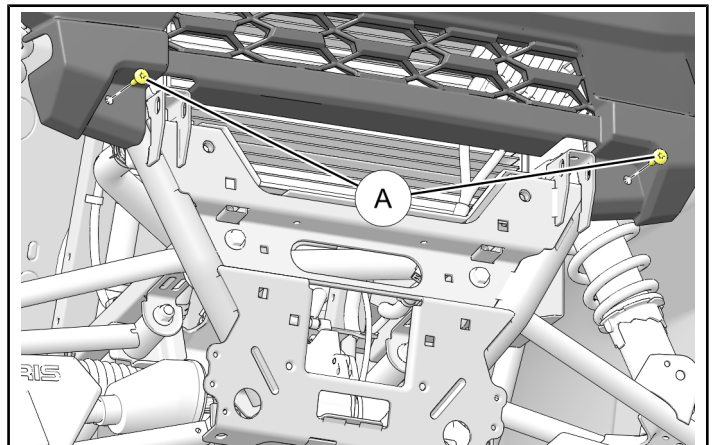
Polaris recommends two people install this kit.

REMOVE EXISTING FRONT FASCIA

1. Shift vehicle transmission into “PARK”. Turn ignition switch to “OFF” position and remove key.
2. Remove four screws ①, then remove lower front fascia. Retain any two screws. Remaining two screws and fascia will not be reused.



3. Reinstall and tighten upper two screws ②.

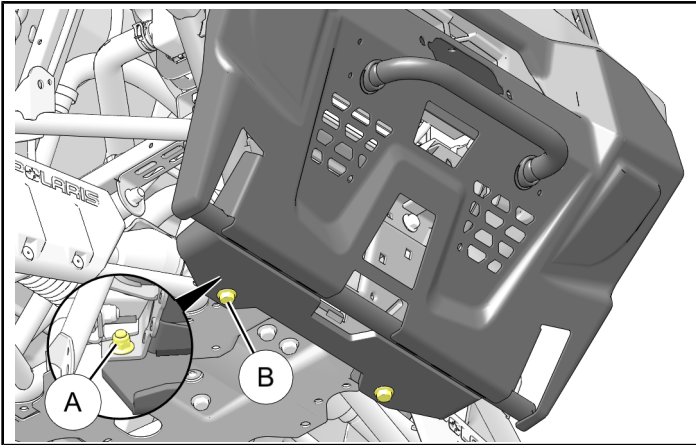


REMOVE EXISTING NON-HD FRONT BUMPER

1. Shift vehicle transmission into "PARK". Turn ignition switch to "OFF" position and remove key.
2. Remove nut (A) and bolt (B). Repeat for opposite side. Hardware will not be reused.

NOTE

RH side detail shown; LH side opposite.



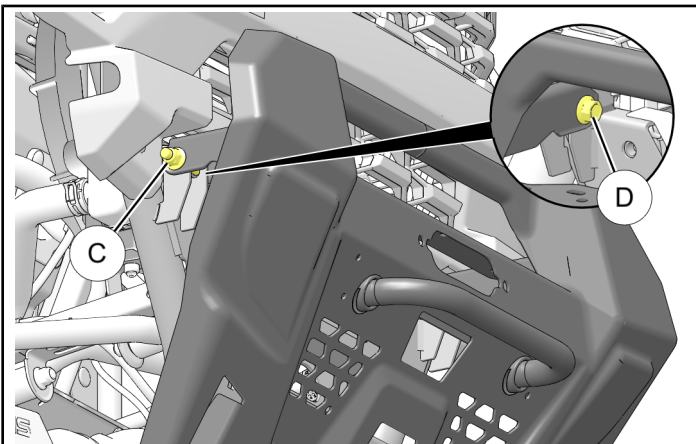
CAUTION

Bumper weighs approximately 31 lbs. (14 Kg). Failure to adequately support bumper during removal may result in personal injury or damage to equipment.

3. While adequately supporting bumper, remove nut (C) and bolt (D). Repeat for opposite side. Bumper and hardware will not be reused.

NOTE

RH side detail shown; LH side opposite.

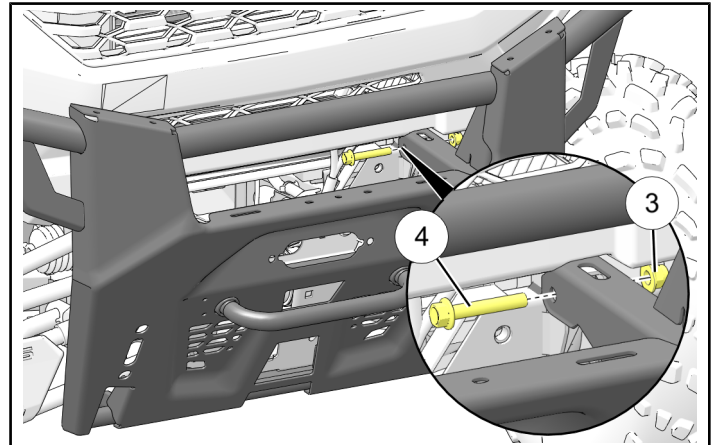


INSTALL NEW HD FRONT BUMPER

1. Lift HD bumper (1) into position, loosely securing to chassis at upper mounting locations using two each NEW screws (4) and nuts (3). Ensure proper orientation: bolt heads are on inboard side, nuts on outboard side.

NOTE

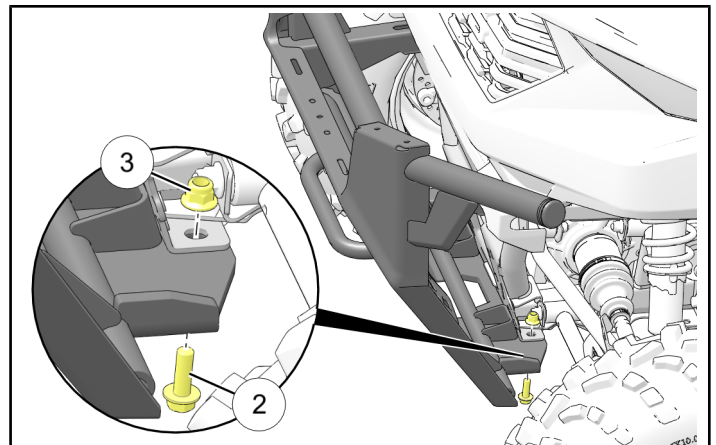
LH side detail shown; RH side opposite.



2. Secure bumper to chassis at lower mounting locations using two each NEW screws (2) and nuts (3).

NOTE

LH side detail shown; RH side opposite.



3. Torque screws (2) and (4) to specification.

TORQUE

30 ft. lbs. (41 Nm) \pm 10%

FEEDBACK FORM

A feedback form has been created for the installer to provide any comments, questions or concerns about the installation instructions. The form is viewable on mobile devices by scanning the QR code or by clicking [HERE](#) if viewing on a PC.

FEEDBACK FORM

