

NERF BAR KIT

P/N 2879622

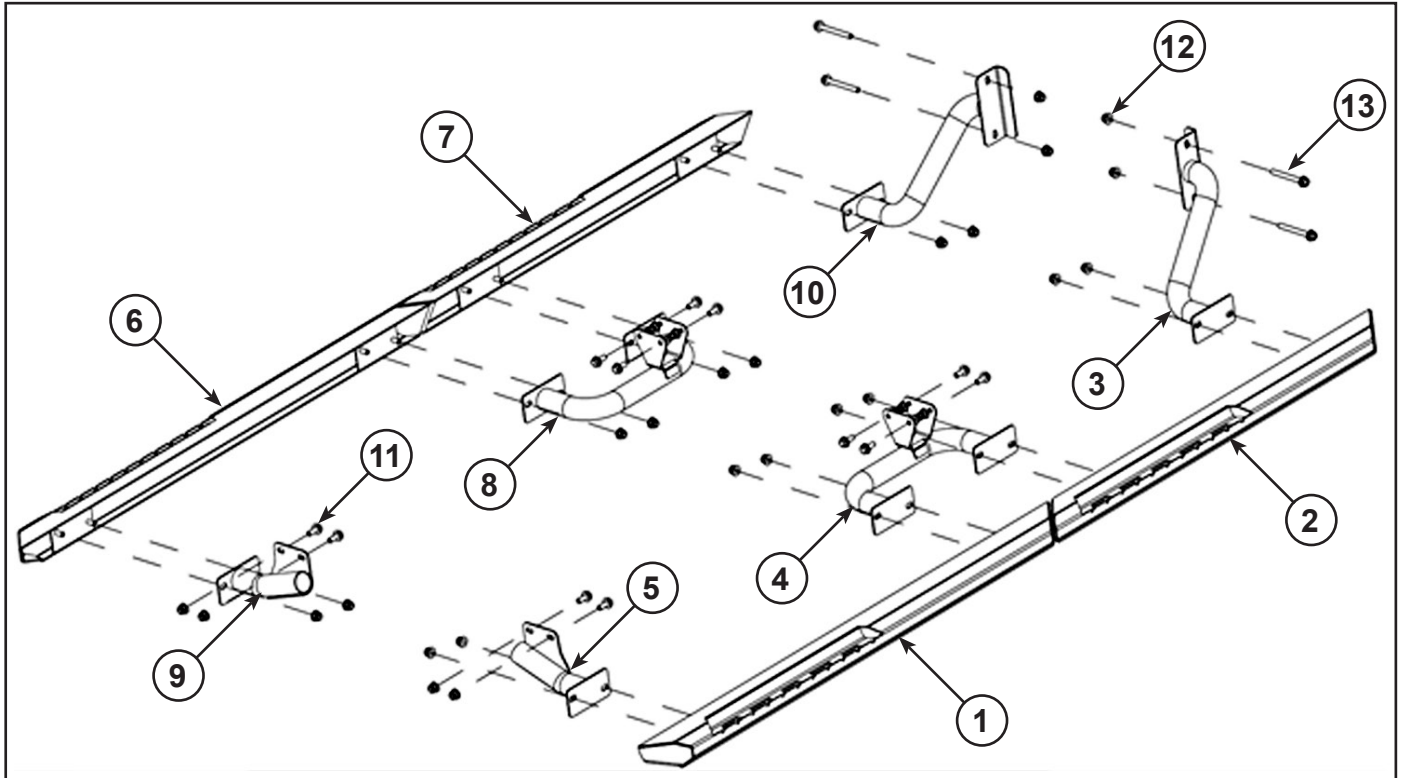


POLARIS[®]

Application

RANGER 900 XP CREW

Before you begin, read these instructions twice and check to be sure all parts and tools are accounted for. Please retain these installation instructions for future reference and parts ordering information.



This Kit Includes:

<u>Ref</u>	<u>Qty</u>	<u>Part Description</u>	<u>Part Number</u>
1	1	Weld-NERF Bar, LH	1018884
2	1	Weld-NERF, Rear, LH	1019376
3	1	Weld-NERF Bar Bracket, RL	1018886
4	1	Weld-Mount, NERF, CTR, LH	1019734
5	1	Weld-NERF Bar Bracket, FL	1018885
6	1	Weld-NERF Bar, RH	1018887
7	1	Weld-NERF, Rear, RH	1019737
8	1	Weld-Mount, NERF, CTR, RH	1019735
9	1	Weld-NERF Bar Bracket, FR	1018888
10	1	Weld-NERF Bar Bracket, RR	1018889
11*	12	Bolt-M8X1.25X20, HXHD FLG	7518702
12*	32	Nut-M8X1.25, HXFLG, NYLON	7547317
13*	4	Screw-M8X1.25X75 8.8 HX/FL	7518955
	1	Instructions	9924517

Item marked (*) are included in Service Kit PN 2205061

Tools Required:

Metric Socket Set

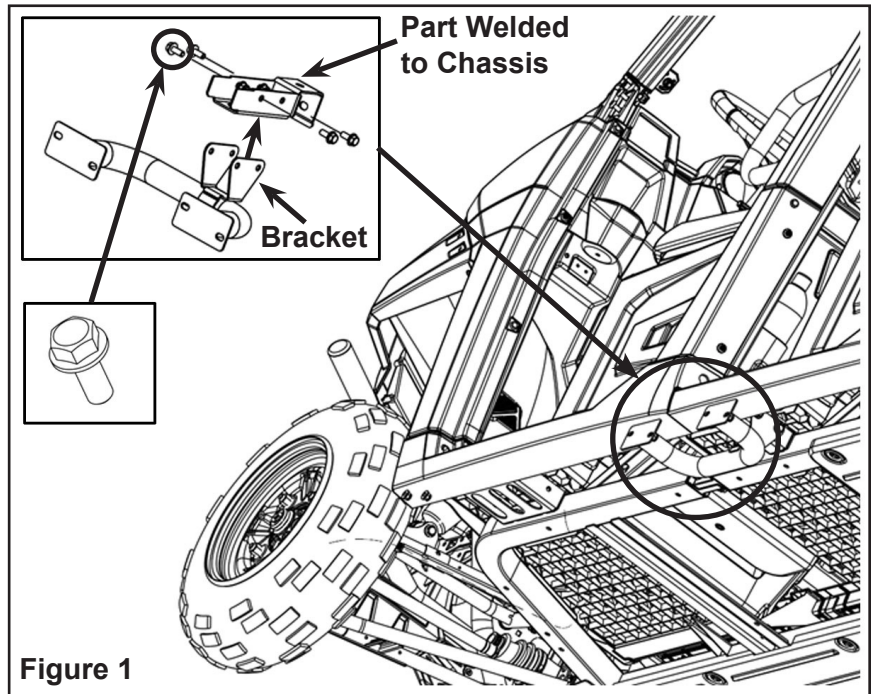
IMPORTANT: Your Polaris RANGER 900 XP CREW NERF bars are exclusively designed for your vehicle. Please read the installation instructions thoroughly before beginning. Installation is easier if the vehicle is clean and free of debris. For your safety and to ensure a satisfactory installation, perform all installation steps correctly and in the sequence shown. Before you begin, ensure to thoroughly review the instructions. Ensure that you have all the required tools and the skills necessary to complete the installation.

APPROXIMATE ASSEMBLY TIME: 15-20 minutes

INSTALLATION INSTRUCTIONS:

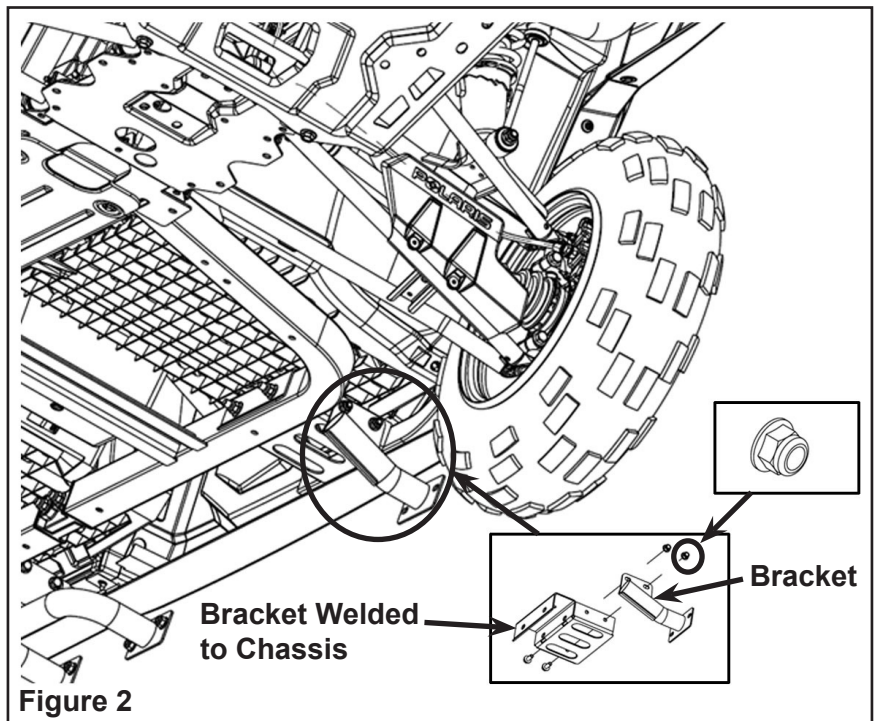
1. Clamp the brackets (PN 1019734 LH; 1019735 RH) to the chassis by loosely assembling the four bolts (PN 7518702) using a wrench and ratchet. Figure 1.

NOTE: Do not torque bolts at this time.



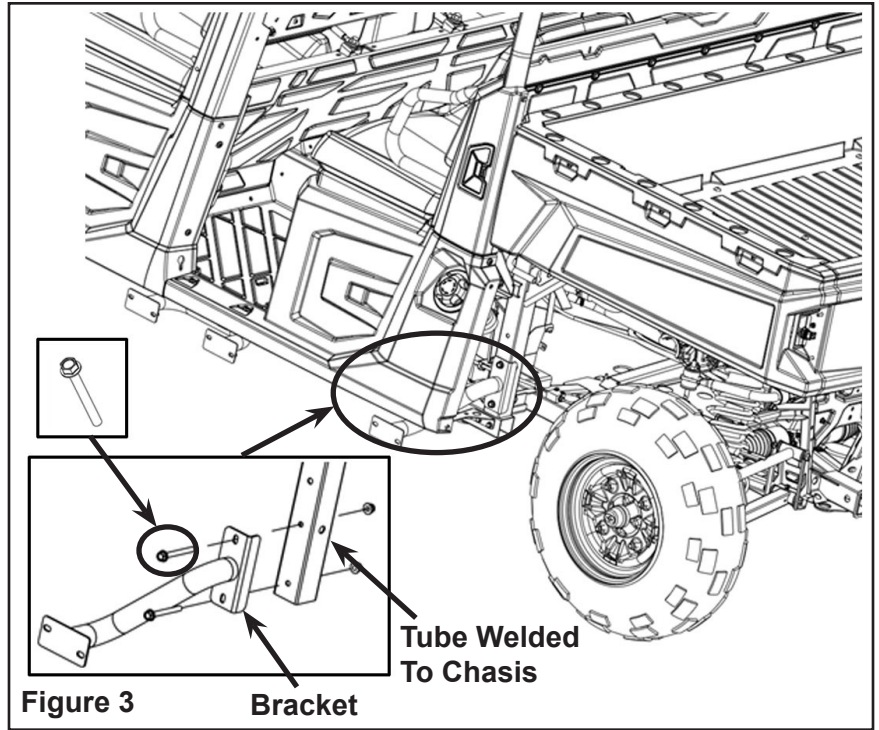
2. Loosely clamp the front brackets (PN 1018885 LH; 1018888 RH) to the chassis. Figure 2.

NOTE: Do not torque bolts at this time.



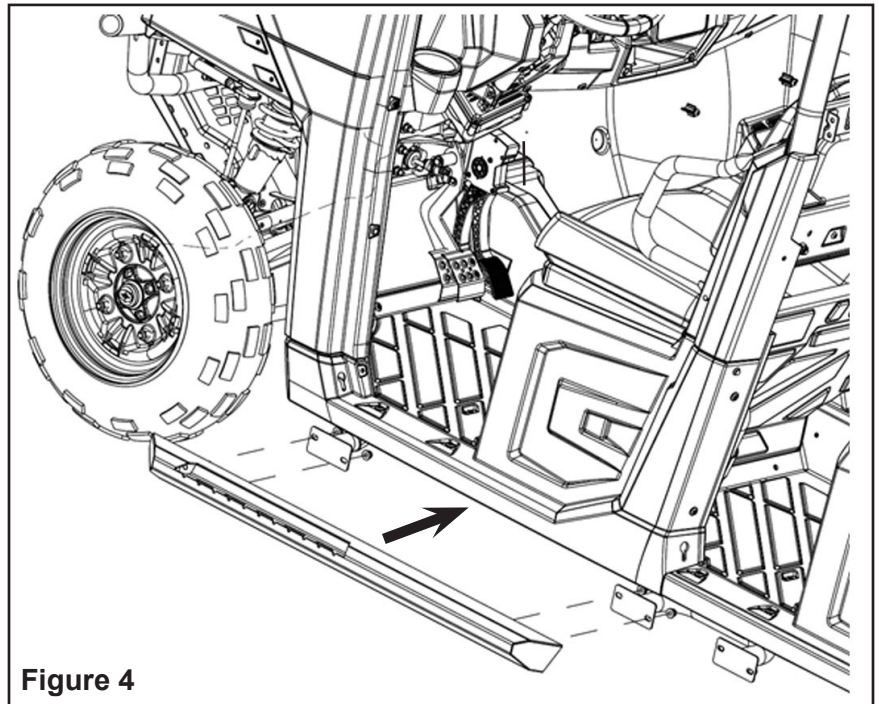
- Loosely clamp the rear brackets (PN 1018886 LH; 1018889 RH) to the chassis. Figure 3.

NOTE: Do not torque bolts at this time.



- Align the front NERF bar (PN 1018884 LH; 1018887 RH) on both left and right hand sides to the brackets and loosely assemble fasteners. Figure 4.

NOTE: Do not torque bolts at this time.



5. Align the rear NERF bar (PN 1019376 LH; 1019737 RH) on both left and right hand sides to the brackets and loosely assemble fasteners. Figure 5.

NOTE: Do not torque bolts at this time.

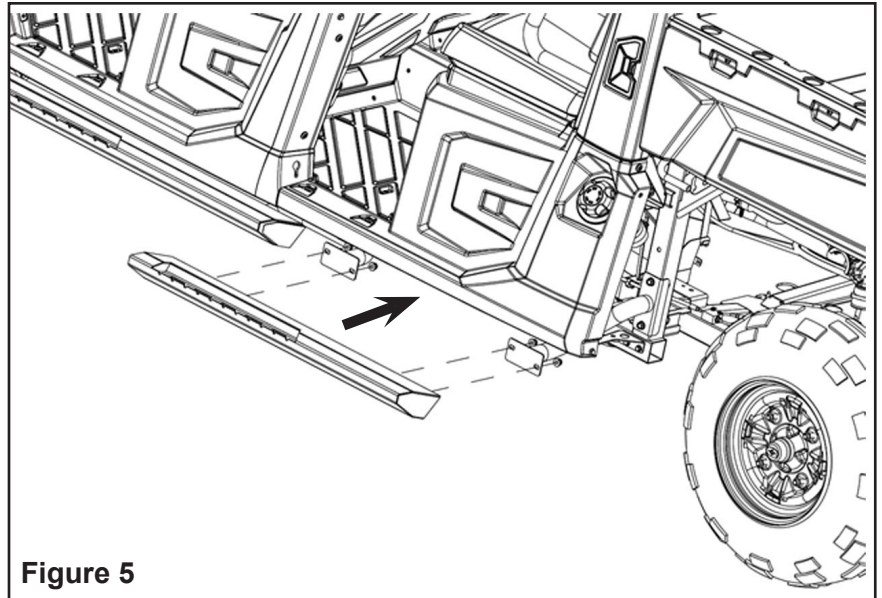


Figure 5

6. If necessary, make any final adjustments to orient the NERF bar (front and rear) for both left and right hand sides. Tighten the nuts to mount. Torque to 12-15 ft. lbs. (16.2-20.3 Nm). Tighten fasteners holding the mounting brackets to the vehicle frame to 12-15 ft. lbs. (16-20.3 Nm). Check for any loose fasteners and tighten prior to using the vehicle. Figure 6.

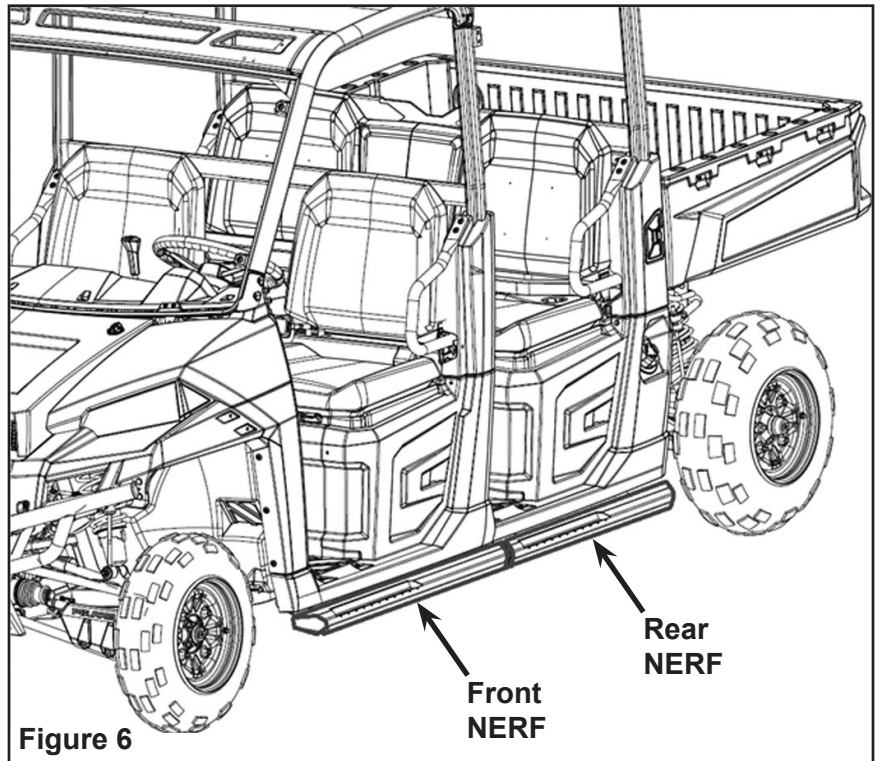


Figure 6