

ROCK SLIDER KIT



P/N 2883398

APPLICATION

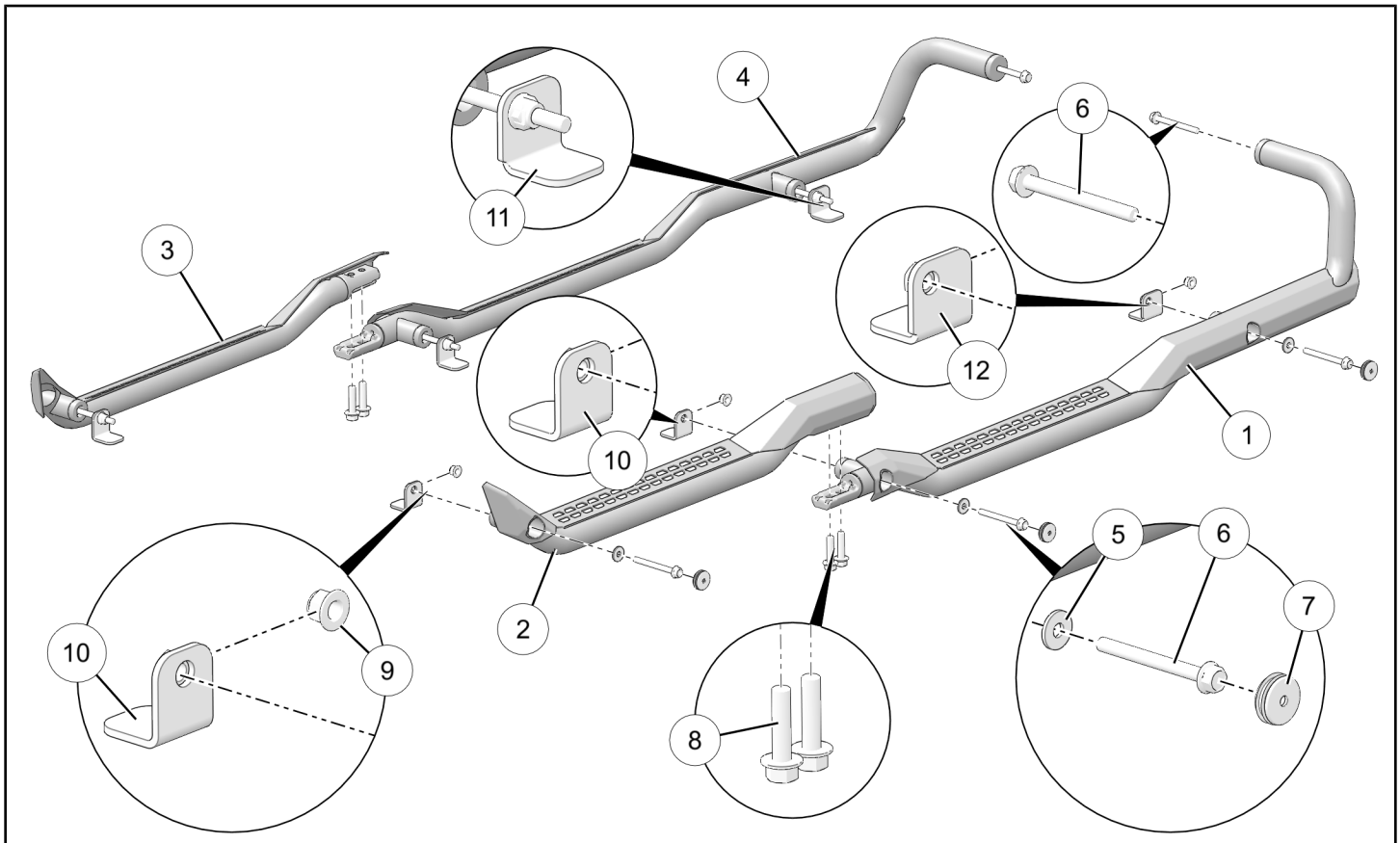
Verify accessory fitment at Polaris.com.

BEFORE YOU BEGIN

Read these instructions and check to be sure all parts and tools are accounted for. Please retain these installation instructions for future reference and parts ordering information.

KIT CONTENTS

This Kit includes:



| REF | QTY | PART DESCRIPTION | PART NUMBER |
|-----|-----|-------------------------------------|-------------|
| 1 | 1 | Rock Slider, Left Rear | - |
| 2 | 1 | Rock Slider, Left Front | - |
| 3 | 1 | Rock Slider, Right Front | - |
| 4 | 1 | Rock Slider, Right Rear | - |
| 5* | 6 | Washer - 0.327 X 0.875 X 0.090 | 7556341 |
| 6* | 8 | Screw, Hex Flange - M8 X 1.25 X 80 | 7519217 |
| 7* | 6 | Plug, 1.25 | 5450653 |
| 8 | 4 | Screw, Hex Flange - M10 X 1.25 X 40 | 7519332 |

| REF | QTY | PART DESCRIPTION | PART NUMBER |
|-----|-----|-------------------------------------|-------------|
| 9 | 6 | Nut, Hex Flange, Locking- M8 X 1.25 | 7547332 |
| 10* | 4 | Retention Angle, Front / Mid | - |
| 11* | 1 | Retention Angle, Right Rear | 5264430 |
| 12* | 1 | Retention Angle, Left Rear | 5264410 |
| | 1 | Instructions | 9928549 |

Items marked (*) are included in Hardware Kit PN 2206965. However, included quantities are for similar non-crew Rock Slider Kit 2882530.

TOOLS REQUIRED

- Safety Glasses
- Deburring Tool
- Drill
- Hole Saw: 1–3/4 inch (44 mm)
- Socket Set, Metric
- Torque Wrench
- Wrench Set, Metric

IMPORTANT

Your Rock Slider Kit is exclusively designed for your vehicle. Please read the installation instructions thoroughly before beginning. Installation is easier if the vehicle is clean and free of debris. For your safety, and to ensure a satisfactory installation, perform all installation steps correctly in the sequence shown.

ASSEMBLY TIME

Approximately 50–60 minutes

INSTALLATION INSTRUCTIONS

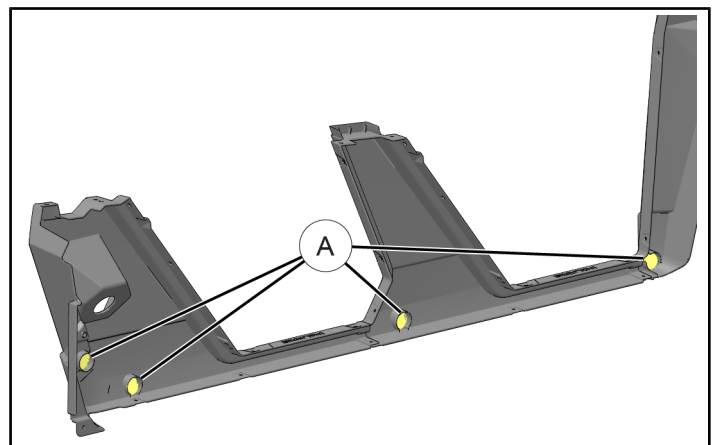
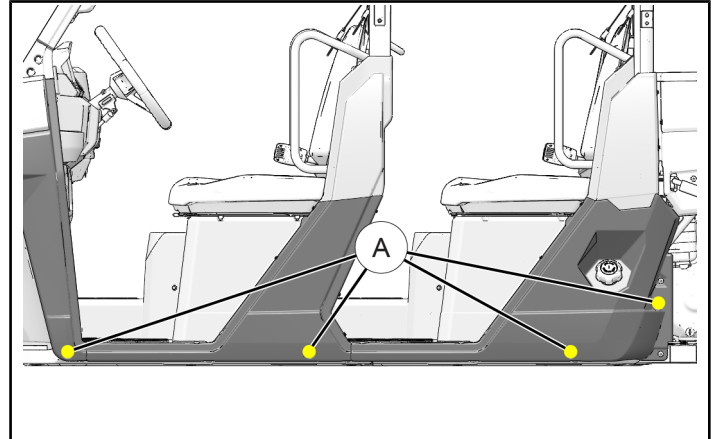
1. Shift vehicle transmission into “PARK”. Turn ignition switch to “OFF” position and remove key from switch.
2. Use hole saw to cut four openings in fender panels at marked locations (A), then debur hole edges as required. Ensure holes are accurately centered to prevent damage to hole rib on inboard side of panels.

IMPORTANT

Control drill depth to prevent damage to underlying structure or components.

NOTE

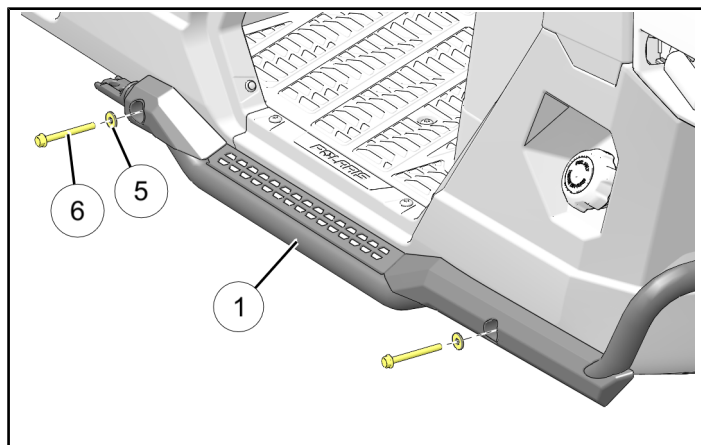
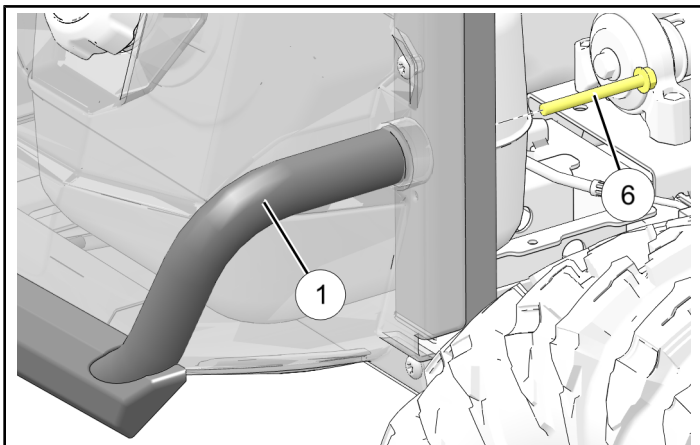
Fenders do not need to be removed to perform this step. Fender interior shown for reference only.



3. Loosely install rear end of left rear rock slider ① to vehicle frame using screw ⑥.

NOTE

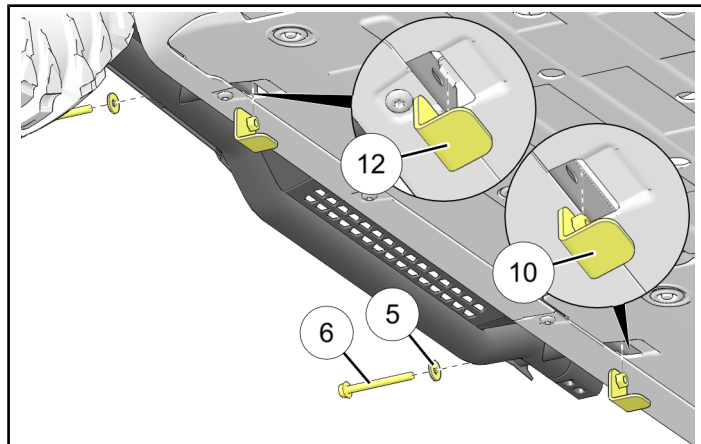
Rear body panel shown partially transparent for clarity.



4. Lift front end of left rear rock slider ① into position, then loosely install one each screw ⑥ and washer ⑤ through rock slider and vehicle frame into front / mid retention angle ⑩. Repeat for left rear retention angle ⑫.

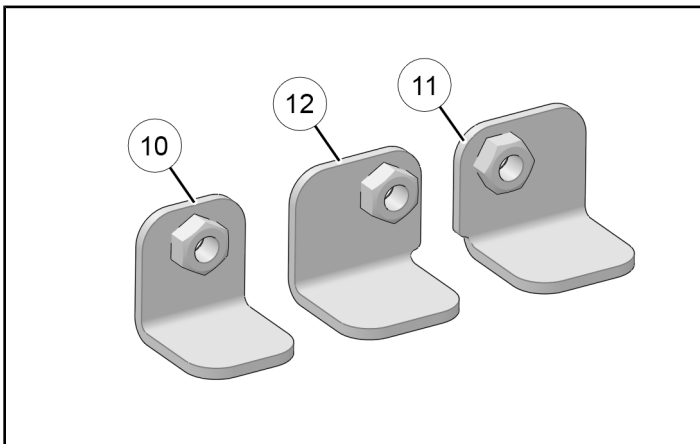
Ensure proper angle is installed:

- **FRONT / MID** retention angles ⑩ are symmetrical for LH/RH sides, nuts are centered, no corner notches
- **REAR** retention angles, LH ⑫ and RH ⑪, are not symmetrical, nuts are off-center, notched corners



NOTE

Retention angles are provided to ease installation. However, slight variations in vehicle assembly may prevent one or more angles from aligning with corresponding screw. If this occurs, replace angle with nut ⑨.

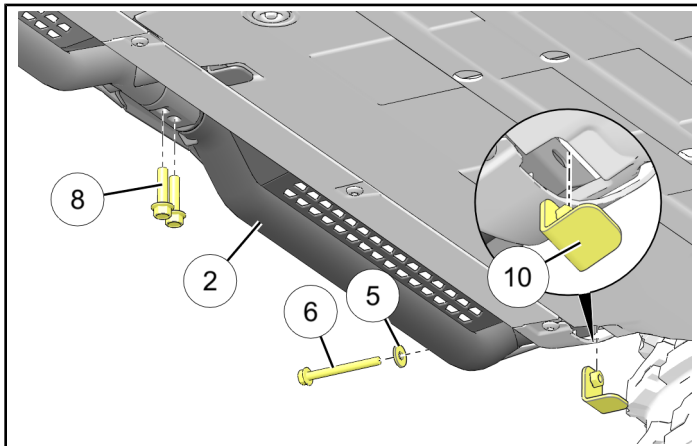
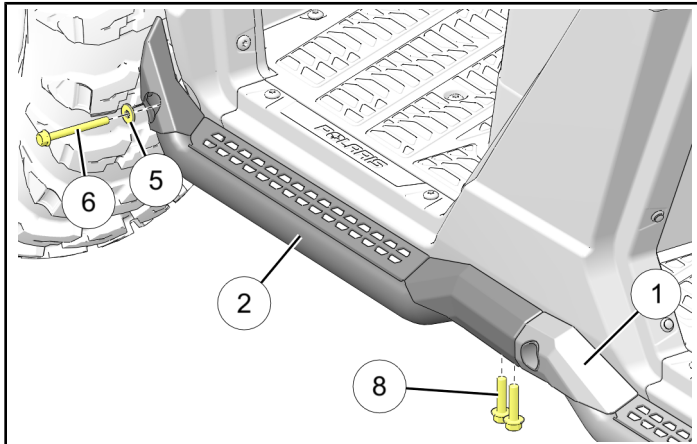


5. Slide left front rock slider ② into left rear rock slider ①, then loosely install one each screw ⑥ and washer ⑤ through front end of front rock slider and vehicle frame into front / mid retention angle ⑩.

Secure front rock slider to rear rock slider using two screws ⑧.

NOTE

Retention angles are provided to ease installation. However, slight variations in vehicle assembly may prevent one or more angles from aligning with corresponding screw. If this occurs, replace angle with nut ⑨.



FEEDBACK FORM

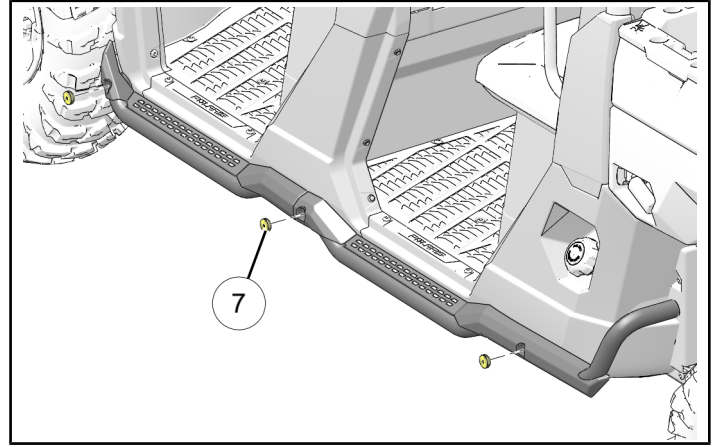
A feedback form has been created for the installer to provide any comments, questions or concerns about the installation instructions. The form is viewable on mobile devices by scanning the QR code or by clicking [HERE](#) if viewing on a PC.

6. Torque all screws to specification.

TORQUE

M8 screws ⑥: 10 ft. lbs. (14 Nm) \pm 10%
M10 screws ⑧: 40 ft. lbs. (54 Nm) \pm 10%

7. Install three plugs ⑦.



8. Repeat Steps 2–7 for RH side using right front rock slider ③, right rear rock slider ④, and right rear retention angle ⑪.

FEEDBACK FORM

