

# HALF DOOR KIT



**P/N 2882559**

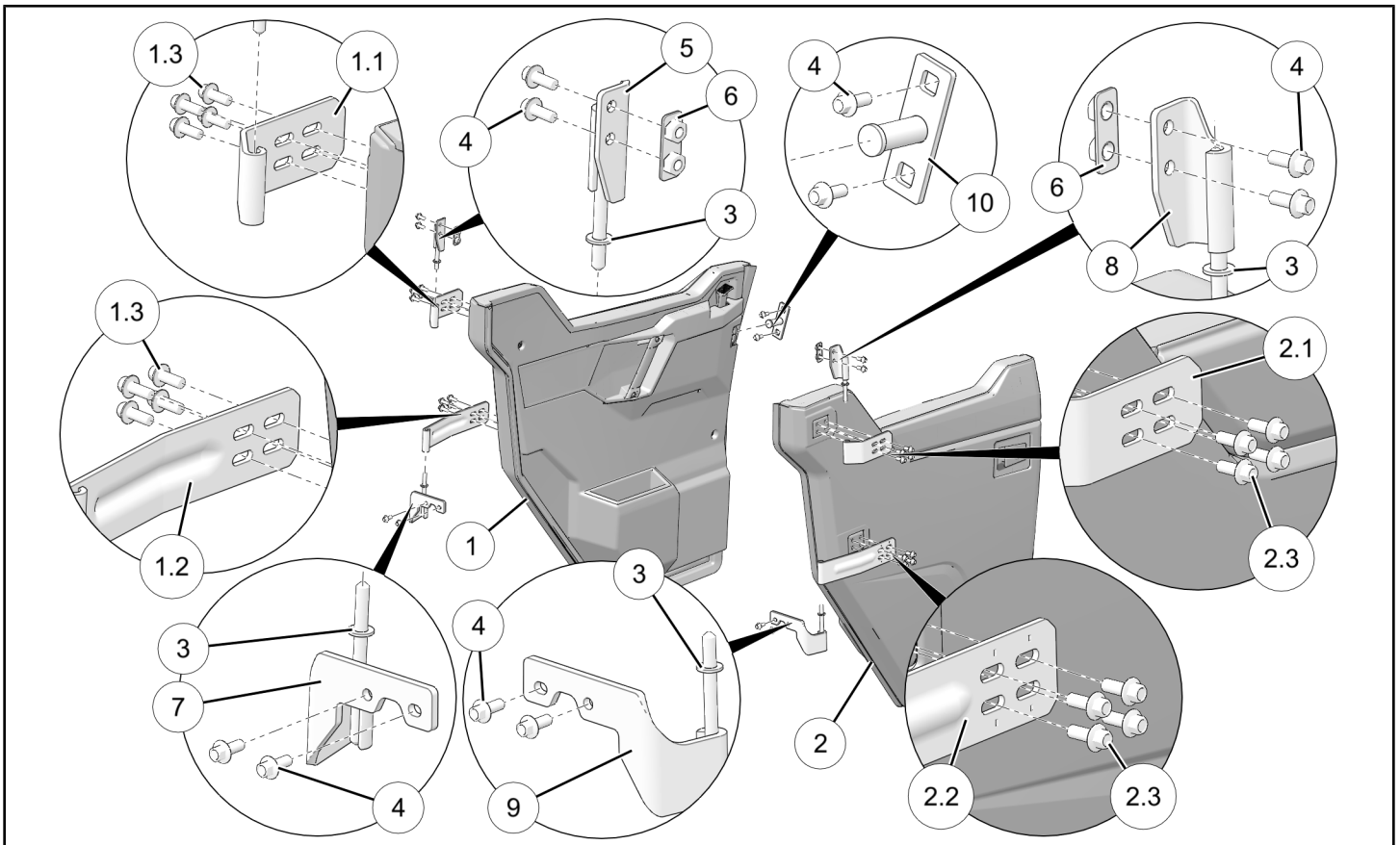
## APPLICATION

Verify accessory fitment at [Polaris.com](http://Polaris.com).

## BEFORE YOU BEGIN

Read these instructions and check to be sure all parts and tools are accounted for. Please retain these installation instructions for future reference and parts ordering information.

## KIT CONTENTS



| REF | QTY | PART DESCRIPTION   | PART NUMBER |
|-----|-----|--|-------------|
| 1   | 1   | Door Assembly, LH (includes items 1.1 through 1.3 below) | 2636610     |
| 1.1 | 1   | . Hinge, Door Side, Upper                                | 5264003-458 |
| 1.2 | 1   | . Hinge, Door Side, Lower                                | 5263991-458 |
| 1.3 | 8   | . Screw, Hex Flange - M8 X 1.25 X 20                     | 7519936     |
| 2   | 1   | Door Assembly, RH (includes items 2.1 through 2.3 below) | 2636611     |
| 2.1 | 1   | . Hinge, Door Side, Upper                                | 5264003-458 |
| 2.2 | 1   | . Hinge, Door Side, Lower                                | 5263991-458 |
| 2.3 | 8   | . Screw, Hex Flange - M8 X 1.25 X 20                     | 7519936     |

| REF | QTY | PART DESCRIPTION                    | PART NUMBER |
|-----|-----|-------------------------------------|-------------|
| 3   | 4   | Washer, Nylon - 10.25 X 19.0 X 2.0  | 5439712     |
| 4   | 12  | Screw, Hex Flange - M8 X 1.25 X 20  | 7519936     |
| 5   | 1   | Hinge, LH, Vehicle Side, Upper      | 1023147-458 |
| 6   | 2   | Nut Plate, Upper Vehicle Side Hinge | 5256140     |
| 7   | 1   | Hinge, LH, Vehicle Side, Lower      | 1023149-458 |
| 8   | 1   | Hinge, RH, Vehicle Side, Upper      | 1023148-458 |
| 9   | 1   | Hinge, RH, Vehicle Side, Lower      | 1023150-458 |
| 10  | 2   | Striker                             | 1023171     |
|     | 1   | Instructions                        | 9928616     |

## TOOLS REQUIRED

- Safety Glasses
- Socket Set, Metric
- Torque Wrench
- Wrench Set, Metric

## CONSUMABLES REQUIRED

- Gloves, Chemical Resistant
- Grease, Polaris All Season (or equivalent)

## IMPORTANT

Your Half Door Kit is exclusively designed for your vehicle. Please read the installation instructions thoroughly before beginning. Installation is easier if the vehicle is clean and free of debris. For your safety, and to ensure a satisfactory installation, perform all installation steps correctly in the sequence shown.

## ASSEMBLY TIME

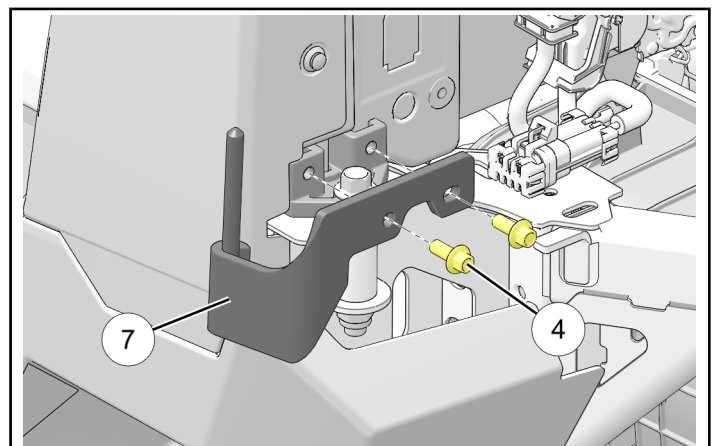
Approximately 40–50 minutes

### NOTE

Additional time may be required to accommodate other accessories.

## INSTALLATION INSTRUCTIONS

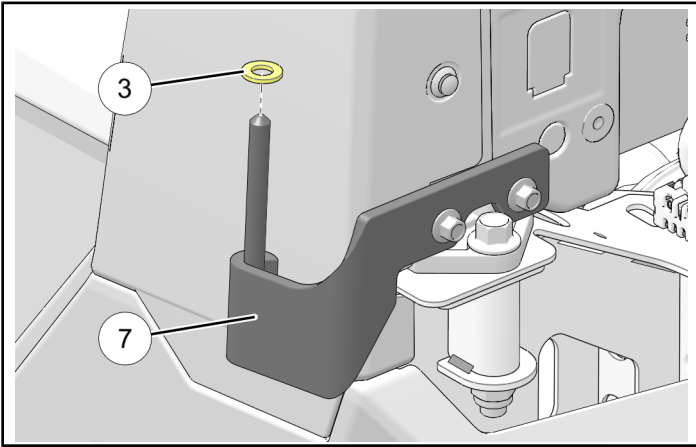
1. Shift vehicle transmission into “PARK”. Turn ignition switch to “OFF” position and remove key from switch.
2. Open vehicle bed.
3. Loosely install lower LH hinge ⑦ using two screws ④.



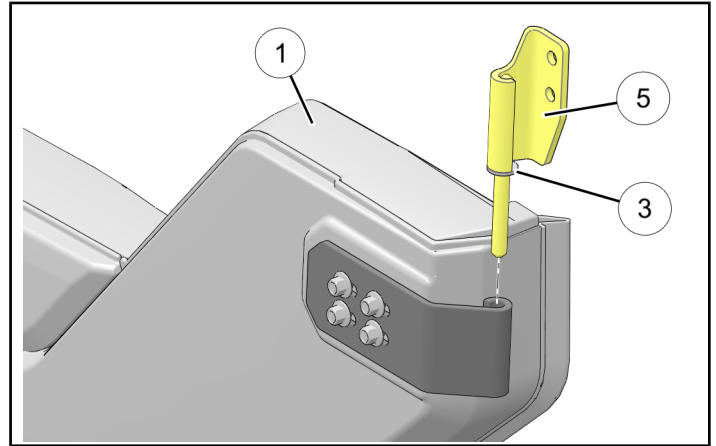
4. Install nylon washer ③ on lower LH hinge ⑦.

**NOTE**

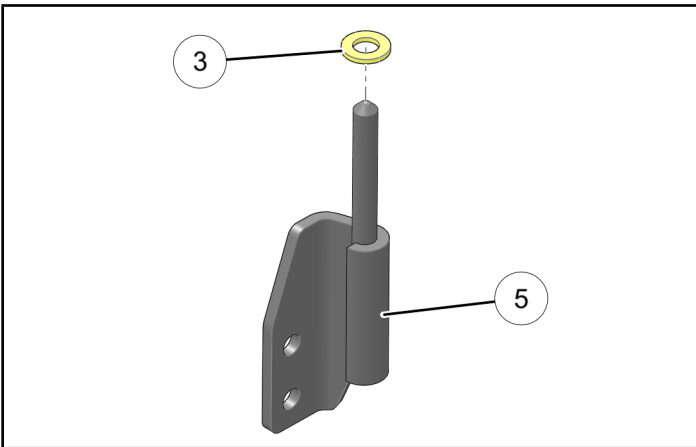
Washer acts as bearing surface to assist in smooth door operation.



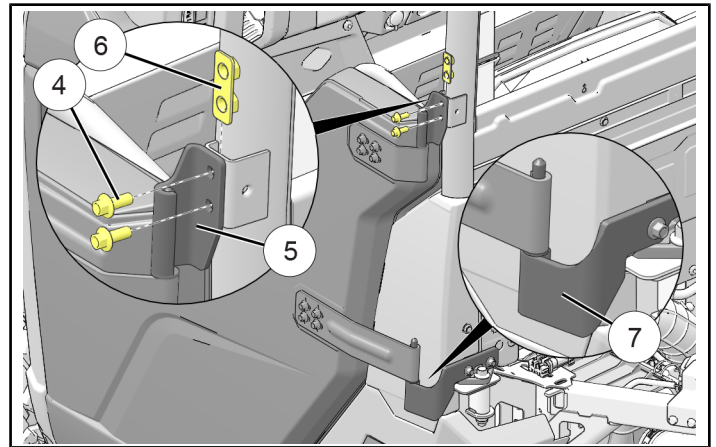
7. Install upper LH hinge ⑤ to mating vehicle side hinge on LH door assembly ①. Do not install upper LH hinge ⑤ to vehicle at this time.



5. Install nylon washer ③ on upper LH hinge ⑤.



8. Install LH door assembly ① to vehicle by first inserting door onto lower hinge ⑦, then loosely install upper hinge ⑤ to ROPS bracket using two screws ④ and nut plate ⑥.



**⚠ WARNING**

Follow all chemical manufacturer instructions and safety precautions. Failure to follow all manufacturer instructions and precautions may result in severe injury or death.

6. Grease pins on both upper and lower hinges ⑤ and ⑦ using Polaris All Season Grease (or equivalent).

9. With upper and lower hinge screws ④ slightly loose, close and center door in ROPS.

Push door inwards and observe gap between door and door frame:

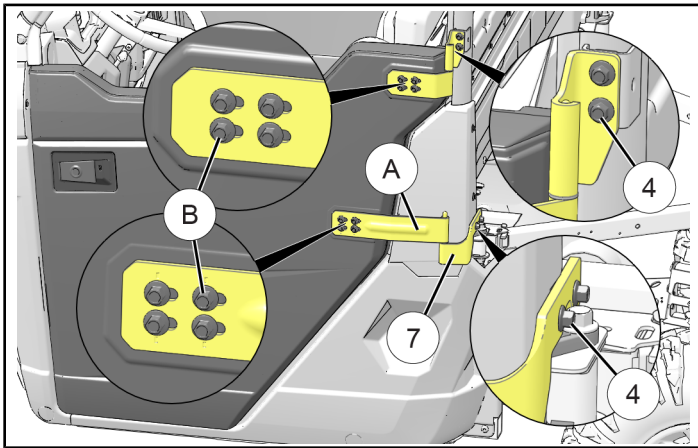
- **If gap is consistent:** While holding door in place, lift lower vehicle side hinge ⑦ against corresponding door side hinge ① to remove any gap, then tighten two hinge screws ④. Afterwards, tighten two upper hinge screws ④.

- **If gap is inconsistent:** Loosen eight upper and lower DOOR SIDE hinge screws ⑥, center door using slotted fastener openings, then tighten all DOOR SIDE hinge screws ⑥.

While still holding door in place, lift lower vehicle side hinge ⑦ against corresponding door side hinge ① to remove any gap, then tighten two hinge screws ④. Afterwards, tighten two upper hinge screws ④.

**TIP**

Have one person hold and center the door, and a second person tighten the screws.

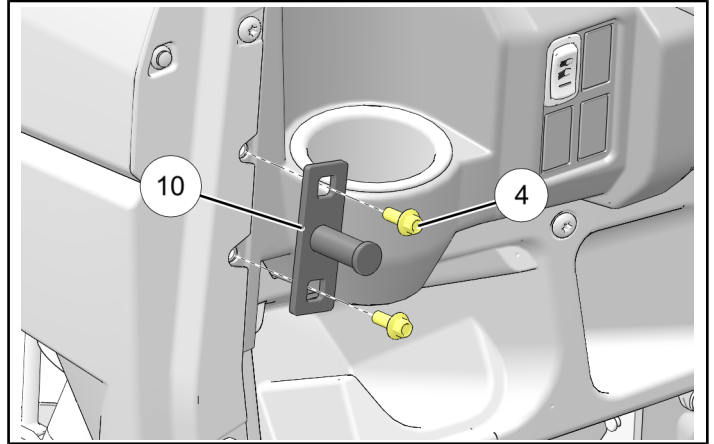


10. Torque all vehicle side hinge screws ④ (and door side hinge screws ⑥, if loosened) to specification.

**TORQUE**

17 ± 2 ft. lbs. (23 ± 2 Nm)

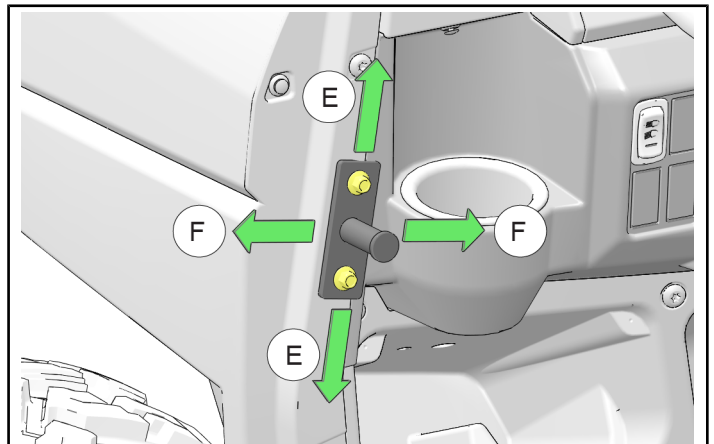
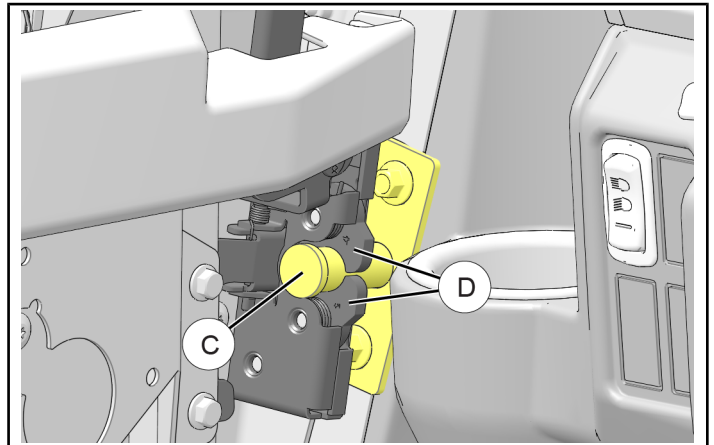
11. Install striker ⑩ to door frame using two screws ④. Position striker in middle of square fastener openings, then tighten fasteners.



12. Open door latch (to properly position pawls), then slowly close door and observe engagement of striker pin ③ into door latch ④.

Adjust striker ⑩ to achieve the following:

- HEIGHT ⑤:** Pin ③ should be centered between upper and lower latch pawls ④.
- DEPTH ⑥:** As required to achieve desired seal compression.



13. Torque striker screws ④ to specification.

**TORQUE**

17 ± 2 ft. lbs. (23 ± 2 Nm)

14. Repeat Steps 3–13 for RH door assembly ② and RH vehicle side hinges ⑧ and ⑨.

15. Lower vehicle bed.

**FEEDBACK FORM**

A feedback form has been created for the installer to provide any comments, questions or concerns about the installation instructions. The form is viewable on mobile devices by scanning the QR code or by clicking [HERE](#) if viewing on a PC.

**FEEDBACK FORM**

