

TONNEAU COVER KIT

POLARIS

ENGINEERED PARTS
ACCESSORIES & APPAREL

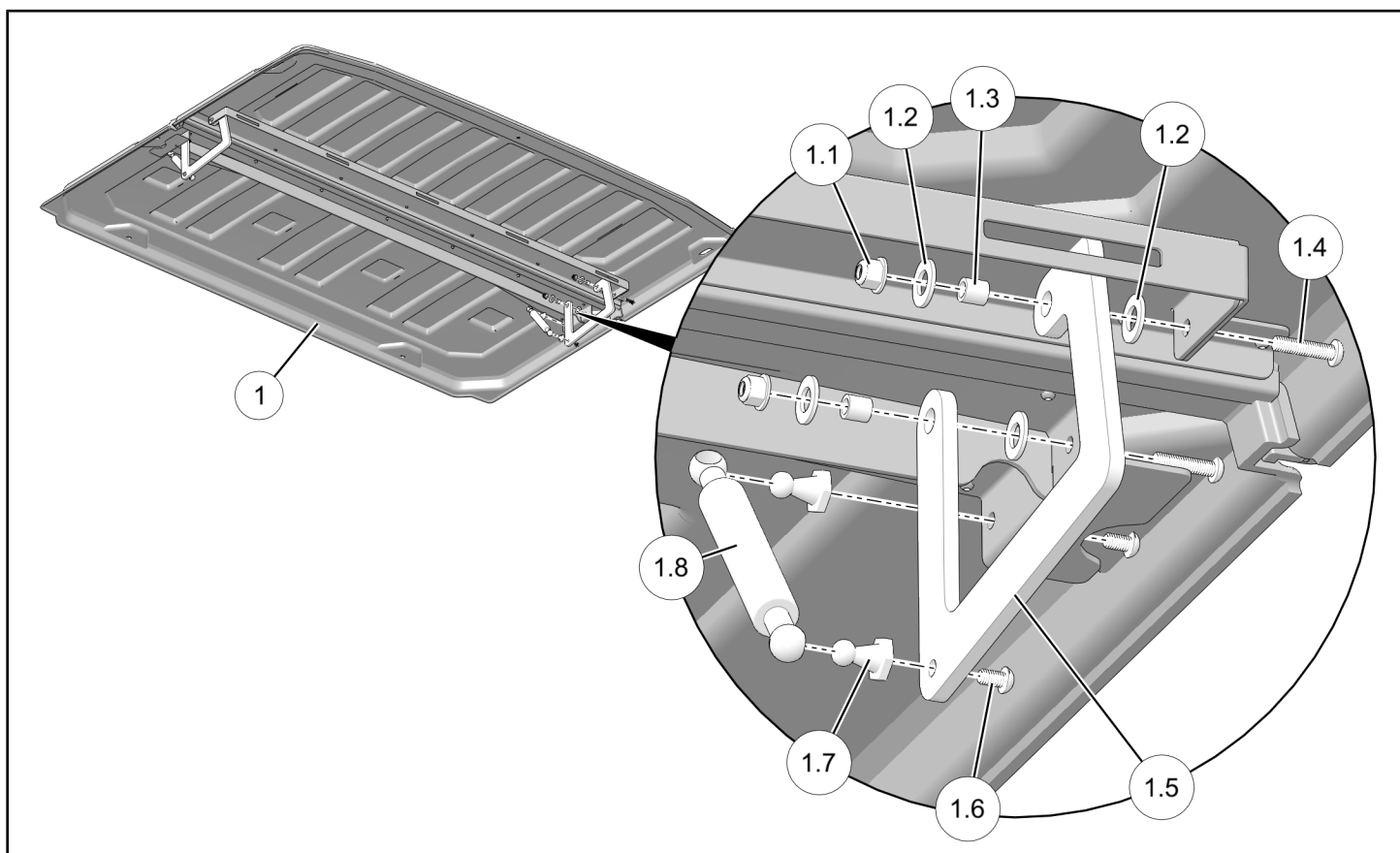
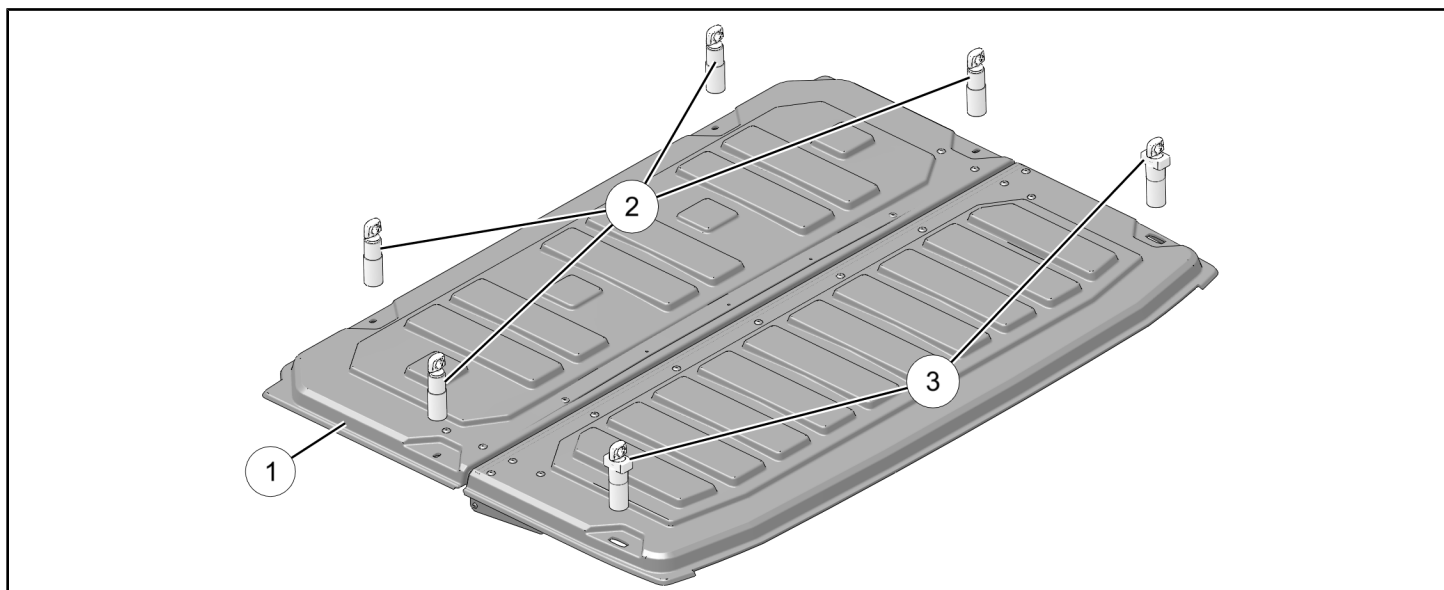
P/N 2884218

BEFORE YOU BEGIN

Read these instructions and check to be sure all parts and tools are accounted for. Please retain these installation instructions for future reference and parts ordering information.

KIT CONTENTS

This Kit includes:



REF	QTY	PART DESCRIPTION	PART NUMBER
1	1	Cover, Tonneau (includes parts 1.1–1.8)	-
1.1*	4	- Nut, Hex Flange, Locking - M6 X 1.0	-
1.2*	8	- Washer, Nylon - 0.390 ID X 0.750 OD	-
1.3*	4	- Bushing - 0.250 ID X 0.376 OD	-
1.4*	4	- Screw, Hex Socket Button Head - M6 X 1.0 X 25	-
1.5*	2	- Hinge Bracket	-
1.6*	4	- Screw, Hex Socket Button Head - M6 X 1.0 X 10	-
1.7*	4	- Fitting, Ball - M6 X 1.0	-
1.8*	2	- Strut	-
2	4	Expansion Anchor Kit, Lock & Ride®, Front	2637938
3	2	Expansion Anchor Kit, Lock & Ride®, Rear	2637932

Parts marked (*) are included in Hardware Kit PN 2208201.

TOOLS REQUIRED

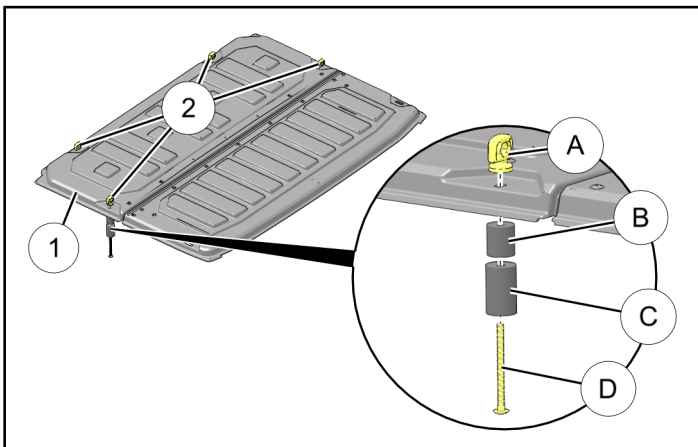
None

IMPORTANT

Your Tonneau Cover Kit is exclusively designed for your vehicle. Please read the installation instructions thoroughly before beginning. Installation is easier if the vehicle is clean and free of debris. For your safety, and to ensure a satisfactory installation, perform all installation steps correctly in the sequence shown.

INSTALLATION INSTRUCTIONS

1. Shift vehicle transmission into “PARK”. Turn ignition switch to “OFF” position and remove key.
2. Loosely assemble FRONT anchor ② to tonneau cover ① at each of four open holes as shown.

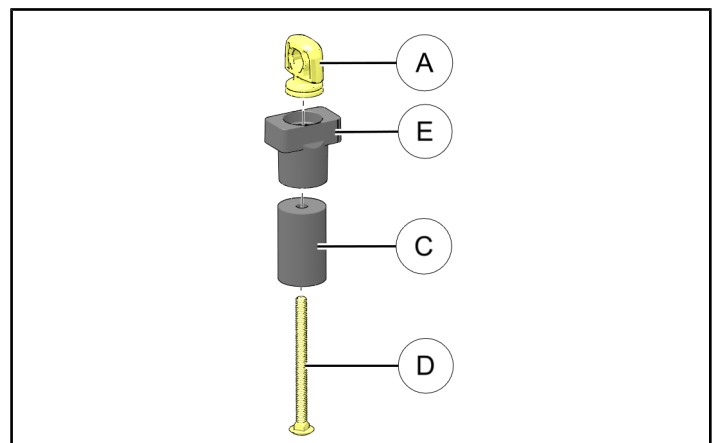


3. Assemble REAR anchor ③ as shown. Repeat for second anchor.

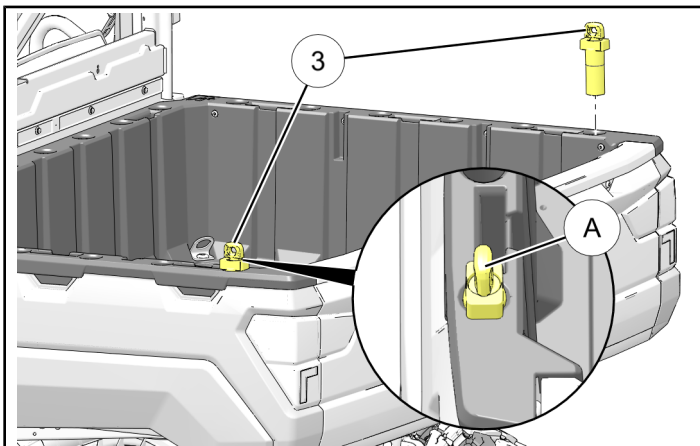
NOTE

Unlike anchor ②, anchor ③ is NOT assembled to tonneau cover.

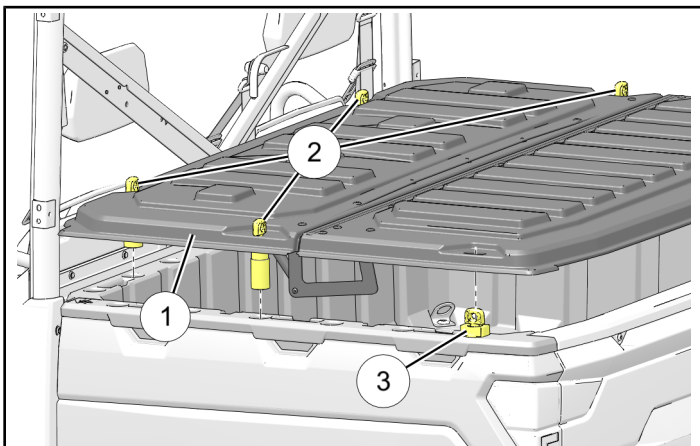
If difficulty is encountered during assembly place head of carriage bolt ④ against solid object. Press parts together, compressing rubber spacer ③, then thread handle ① on to carriage bolt.



4. Install REAR anchor ③ to REAR holes on each side of cargo bed. Tighten handle ④ until anchor is secure, then orient handle front-rear as shown.



5. Install tonneau cover ① to vehicle bed, inserting four front anchors ② into corresponding holes in vehicle bed until anchors are fully seated.

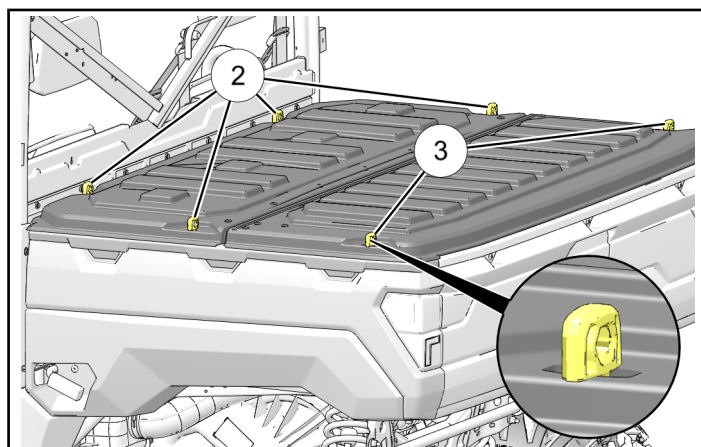


6. Tighten handles on four FRONT anchors ② until anchors are secure.

Insert handles on REAR anchors ③ through corresponding slots in cover, then rotate handles CLOCKWISE.

IMPORTANT

When closing rear half of tonneau cover ensure rear anchors ③ are **FULLY TIGHTENED** to prevent cover from inadvertently opening during vehicle operation or transport.



⚠ WARNING

If transporting vehicle in non-enclosed trailer then vehicle must **FACE FORWARD**, and tonneau cover must be fully **CLOSED** with all anchors securely **TIGHTENED**. Otherwise, cover must be removed. Failure to comply may allow airflow, vibration, or other factors to separate cover from vehicle and cause an accident, resulting in serious injury or death.

FEEDBACK FORM

A feedback form has been created for the installer to provide any comments, questions or concerns about the installation instructions. The form is viewable on mobile devices by scanning the QR code or by clicking [HERE](#) if viewing on a PC.

