

# TRAILERABLE COVER KIT



**P/N 2883419, 2883840**

## APPLICATION

Verify accessory fitment at [Polaris.com](http://Polaris.com).

## BEFORE YOU BEGIN

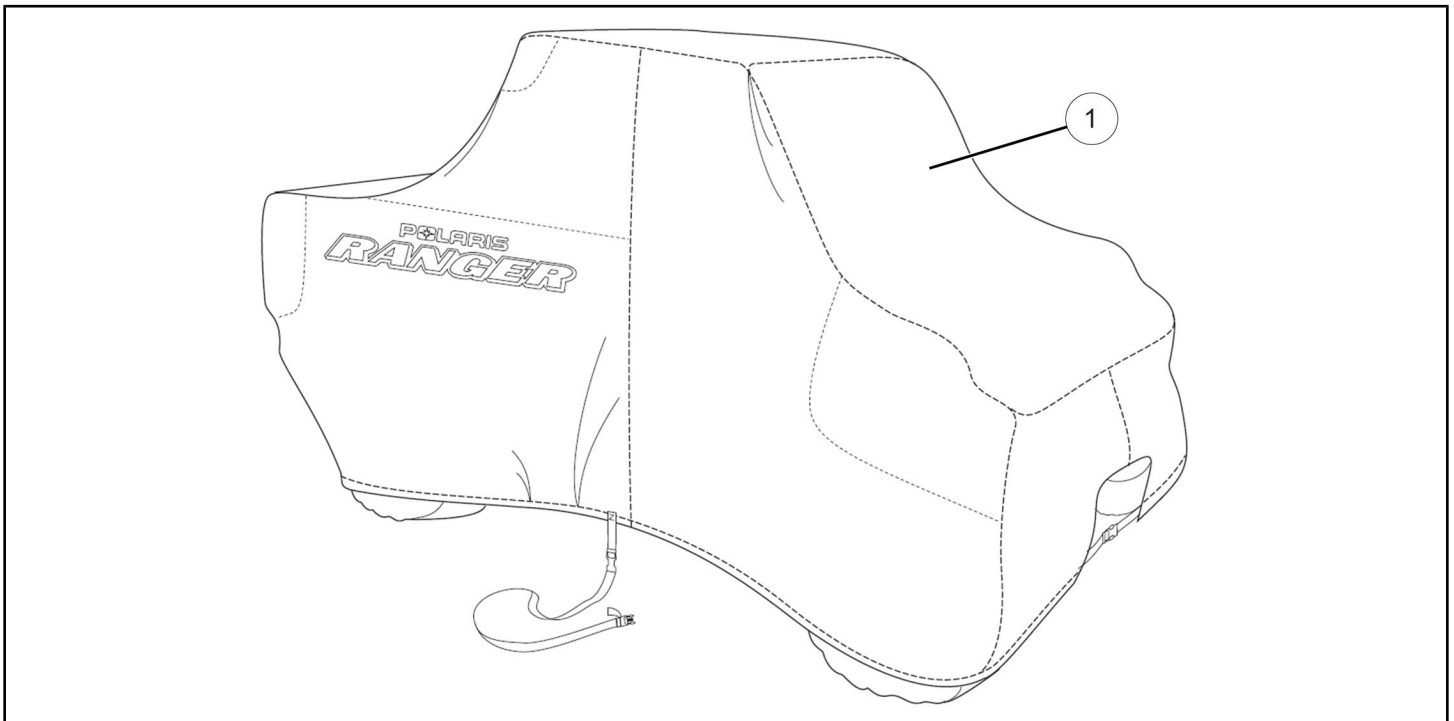
Read these instructions and check to be sure all parts and tools are accounted for. Please retain these installation instructions for future reference and parts ordering information.

## KIT CONTENTS

This Kit includes:

### NOTE

Kit PN 2883419 shown; Kit PN 2883840 similar.



REF	QTY	PART DESCRIPTION	PART NUMBER
1	1	Vehicle Cover	-
	1	Instructions	9928598

## TOOLS REQUIRED

- Safety Glasses

## IMPORTANT

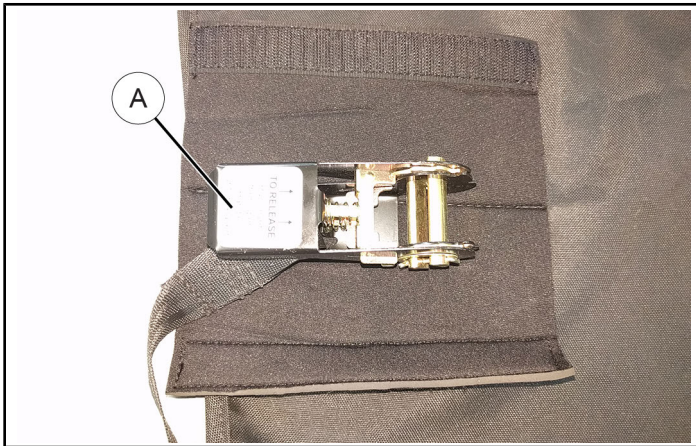
Your Trailerable Cover Kit is exclusively designed for your vehicle. Please read the installation instructions thoroughly before beginning. Installation is easier if the vehicle is clean and free of debris. For your safety, and to ensure a satisfactory installation, perform all installation steps correctly in the sequence shown.

## ASSEMBLY TIME

Approximately 5 minutes

## INSTALLATION INSTRUCTIONS

1. Shift vehicle transmission into "PARK". Turn ignition switch to "OFF" position and remove key.
2. Before cover installation:
  - Examine vehicle for any accessories that extend outside of ROPS or vehicle body to ensure proper fit of cover and prevent damage. Remove or stow accessories and/or install padding as necessary.
  - Ensure exterior of vehicle is clean. Transporting a dirty vehicle with cover installed may damage vehicle finish.
  - If not already done, temporarily stow ratchet **(A)** at left rear corner of cover by folding over and securing flaps with hook and loop strips.



3. Carefully drape cover **(1)** over vehicle, pulling cover as far down over tires as possible.

### IMPORTANT

Cover **MUST** be pulled down below lower surface of tires, and straps located **BELOW** lower tire lugs, to ensure cover stays in place during transport.

### NOTE

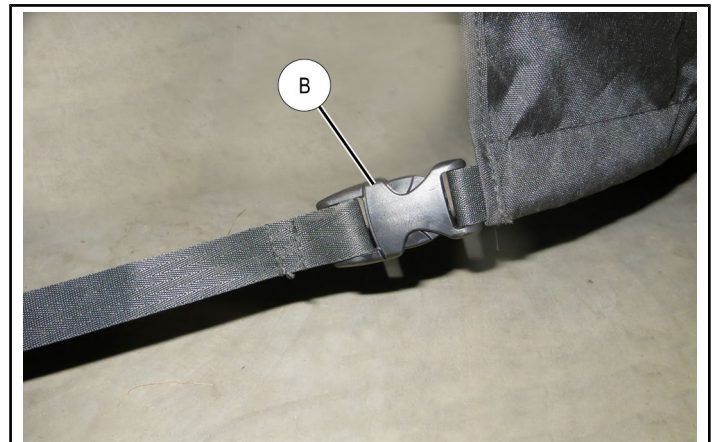
Exterior of cover has "FRONT" label; ratchet is located at left rear corner.  
*RANGER*<sup>®</sup> cover shown; *RANGER CREW*<sup>®</sup> similar.



4. Secure front of cover by connecting buckles **(B)**.

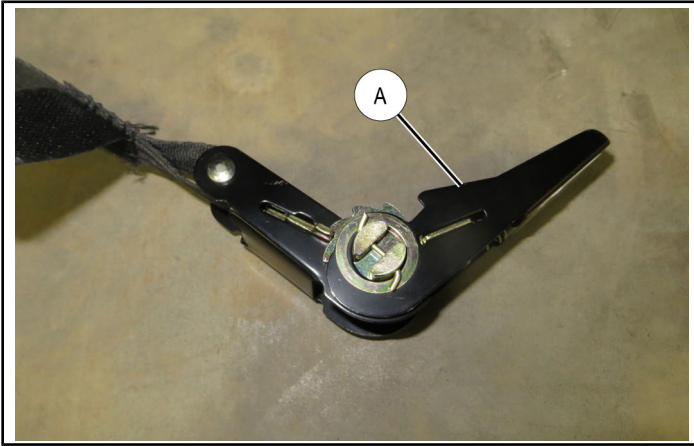
### NOTE

LH strap is sewn to edge of cover opening; RH strap is free to slide in cover pocket. Cover opening accommodates accessory winch or plow installation (sold separately).





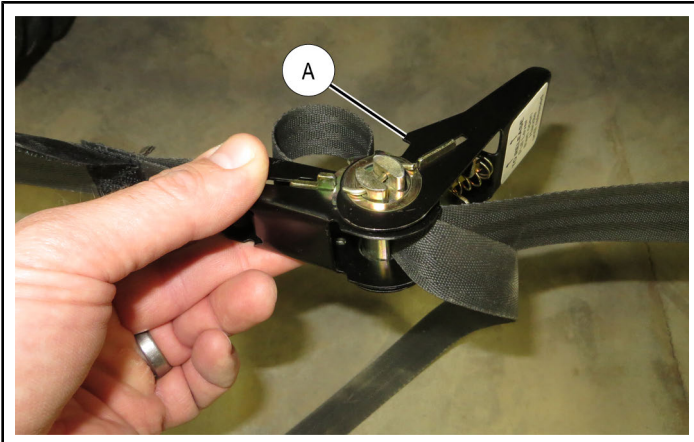
5. Secure rear of cover.  
a. Partially close ratchet (A).



- b. Thread RH strap through loop on end of center strap.



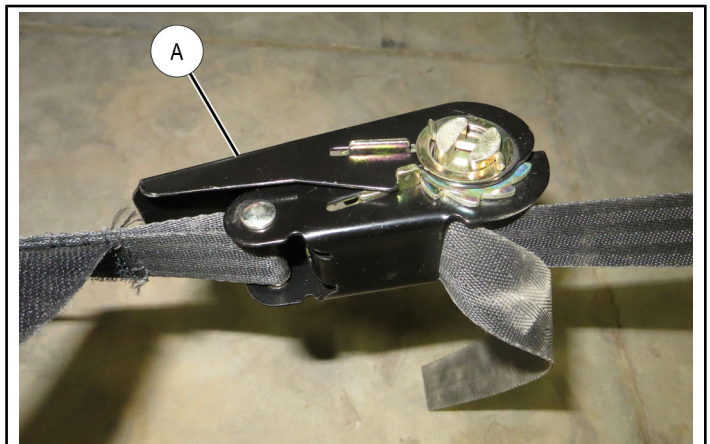
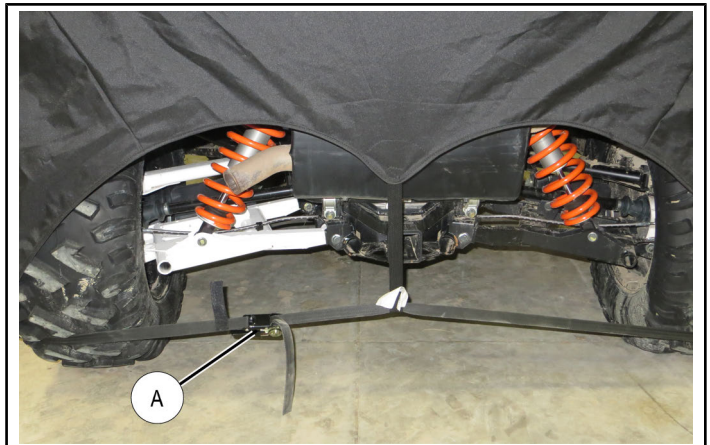
- c. Pull RH strap tight, then fold strap and insert into ratchet (A) spool.



- d. Operate ratchet mechanism until slack is removed, then EXAMINE ALL FOUR TIRES to ensure strap is positioned BELOW lower tire lugs as shown. Adjust as necessary.



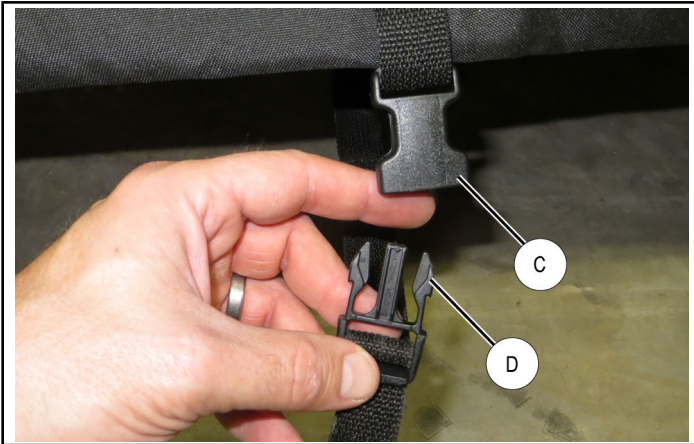
- e. Tension strap sufficiently to prevent it from slipping above tire lugs during transport, then fully close ratchet lever (A).



- Secure middle of cover by connecting male buckles ④ on each end of center strap to female buckles ③ sewn into cover. Tighten strap as required, then confirm strap is not in contact with sharp vehicle structure.

#### NOTE

RANGER CREW® cover has two center straps, center front and center rear.



#### FEEDBACK FORM

A feedback form has been created for the installer to provide any comments, questions or concerns about the installation instructions. The form is viewable on mobile devices by scanning the QR code or by clicking [HERE](#) if viewing on a PC.

- Ensure fuel filler zipper is fully closed.
- If buffeting occurs during transport then remove or adjust cover.
- When removing cover, stow ratchet as described in Step 2 above.

#### ⚠ WARNING

If transporting vehicle in non-enclosed trailer then vehicle must FACE FORWARD, or cover must be removed.

Failure to comply may allow airflow, vibration, or other factors to separate cover from vehicle and cause an accident, resulting in serious personal injury or death.

#### FEEDBACK FORM

