

ROOF KIT



P/N 2889223

BEFORE YOU BEGIN

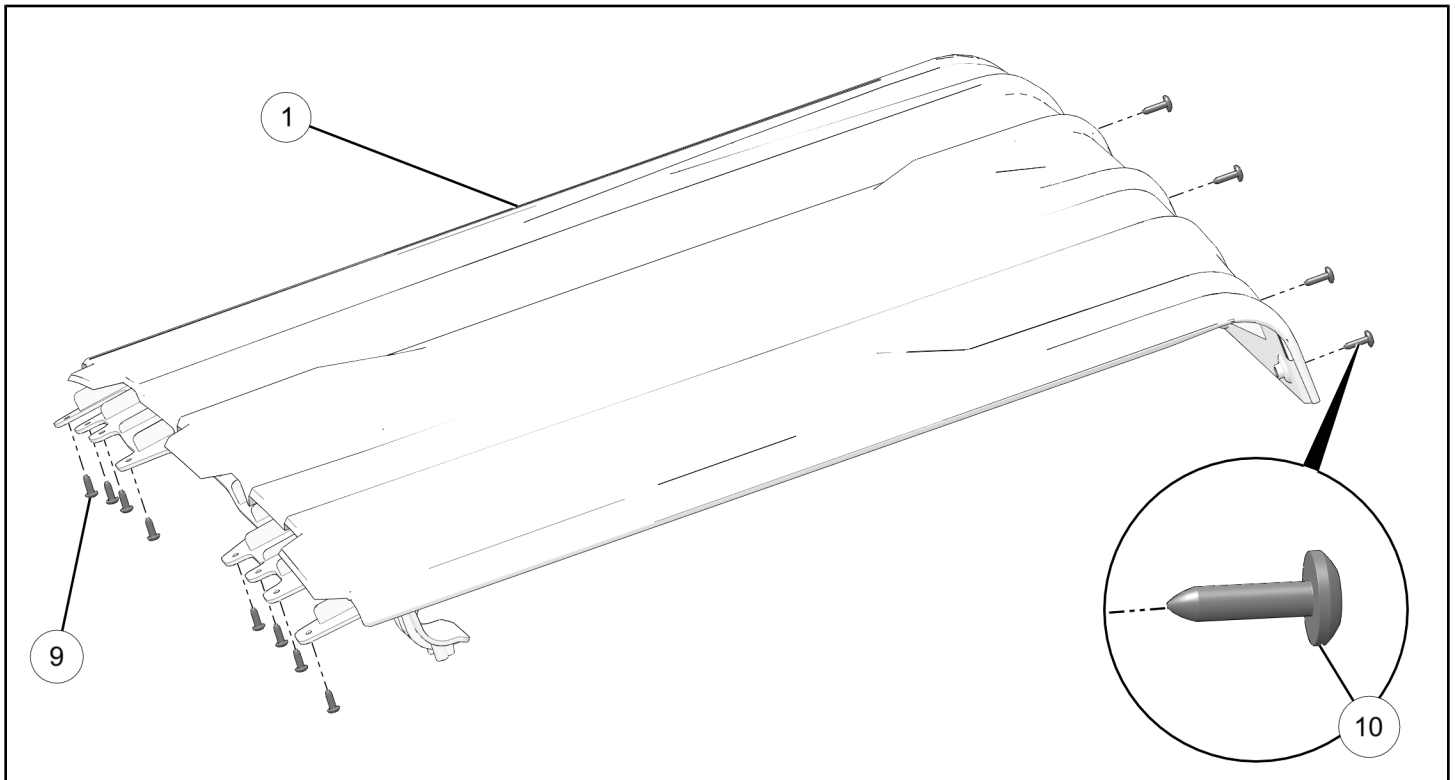
Read these instructions and check to be sure all parts and tools are accounted for. Please retain these installation instructions for future reference and parts ordering information.

APPLICATION

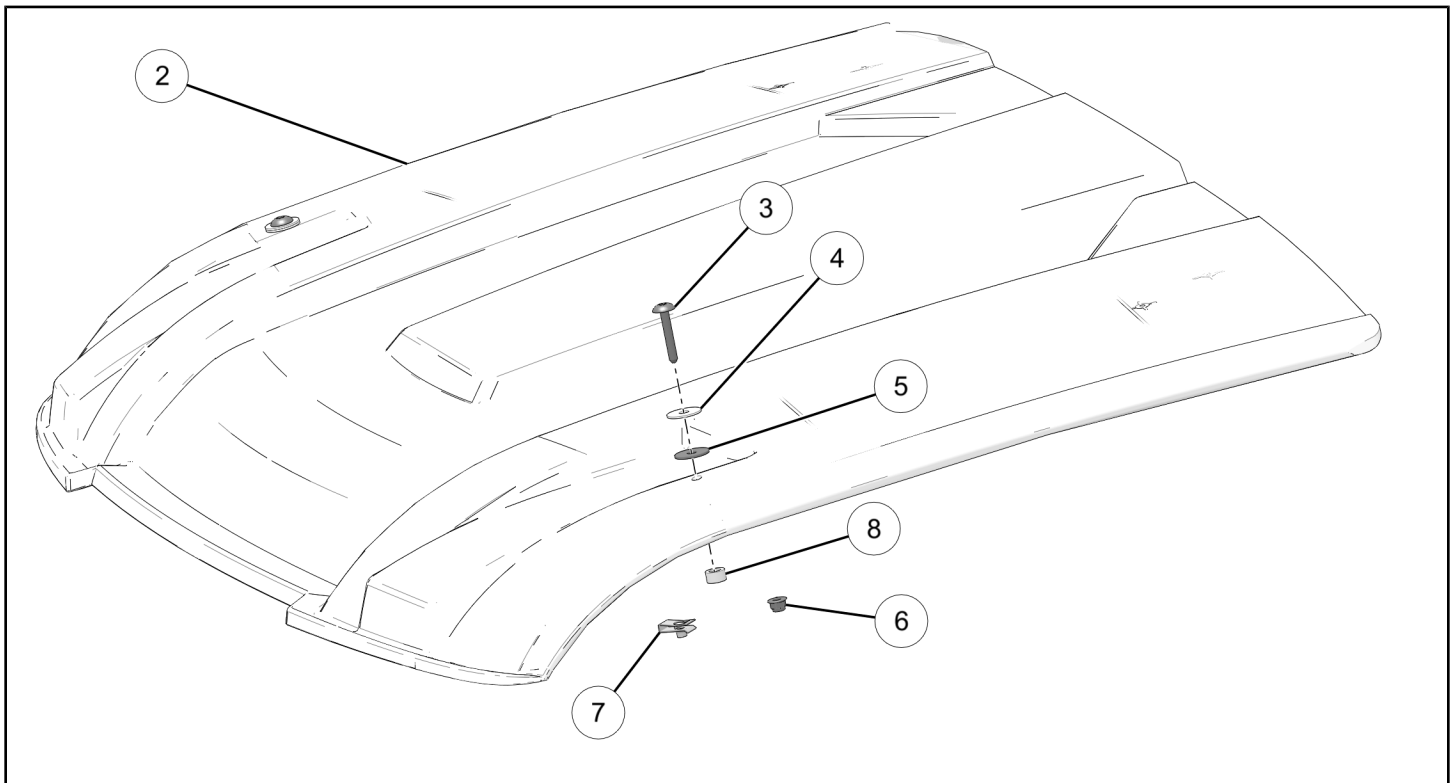
Verify accessory fitment at www.polaris.com.

KIT CONTENTS

REAR ROOF PANEL



FRONT ROOF PANEL



REF	QTY	PART DESCRIPTION	P/N AVAILABLE SEPARATELY
1	1	Panel, Roof Rear, Crew	5454522-070
2	1	Panel, Roof, Front	5458345-070
3	2	Screw, Torx® Truss Head - M6 x 1 x 40	7519001
4	2	Washer, Steel - .281 x 1.00 x .051	7556329
5	2	Washer, Rubber - 7.1 x 25.4 x 1.6	7556879
6	2	Nut, Hex Flange - M6 x 1.0	7547453
7	2	Clip-U, Speed Nut	7081305
8	2	Spacer - .34 ID x .56 OD x .31	7556373
9	8	Screw, Torx® - M5 x 25	7527826
10	4	Screw, Torx® Truss Head - M6 x 1.0 x 25	7519650
11	1	Seal, Roof, Crew (not shown)	2883276

TOOLS REQUIRED

- Safety Glasses
- Screwdriver Set, Torx®
- Socket Set, Torx® Bit
- Torque Wrench

IMPORTANT

Your Roof Kit is exclusively designed for your vehicle. Please read the installation instructions thoroughly before beginning. Installation is easier if the vehicle is clean and free of debris. For your safety, and to ensure a satisfactory installation, perform all installation steps correctly in the sequence shown.

INSTALLATION INSTRUCTIONS

IMPORTANT

If also installing Visor Audio Kit PN 2882888 or 2882891 (sold separately), then Polaris recommends using the Visor Audio Kit instructions as your primary installation guide. The Roof Kit instructions should be used as a secondary reference.

IMPORTANT

If installing Visor Audio Kit and Roof Kit together, customer will have extra hardware that may be discarded. Failure to comply may allow airflow, vibration, or other factors to separate roof from vehicle and cause an accident, resulting in serious personal injury or death.

⚠ WARNING

If transporting vehicle in non-enclosed trailer then vehicle must **FACE FORWARD**, or roof must be removed. Failure to comply may allow airflow, vibration, or other factors to separate roof from vehicle and cause an accident, resulting in serious personal injury or death.

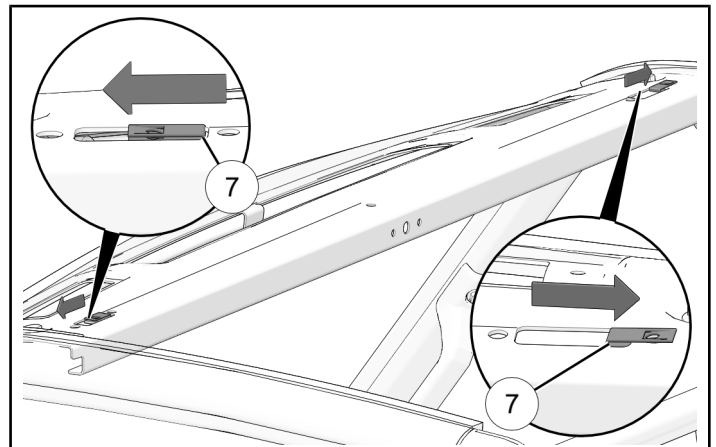
ACCESSORY INSTALLATION

INSTALL SPEED NUT (MY20 AND NEWER ONLY)

1. Install two speed nuts ⑦ into each cutout on ROPS visor.

NOTICE

Install speed nut with threads facing down and align hole in speed nut with outer-most hole on ROPS visor.



VEHICLE PREPARATION

GENERAL

1. Park vehicle on flat surface.
2. Shift vehicle into PARK.
3. Turn ignition switch to OFF position and remove key.

INSTALL ROOF SEAL KIT

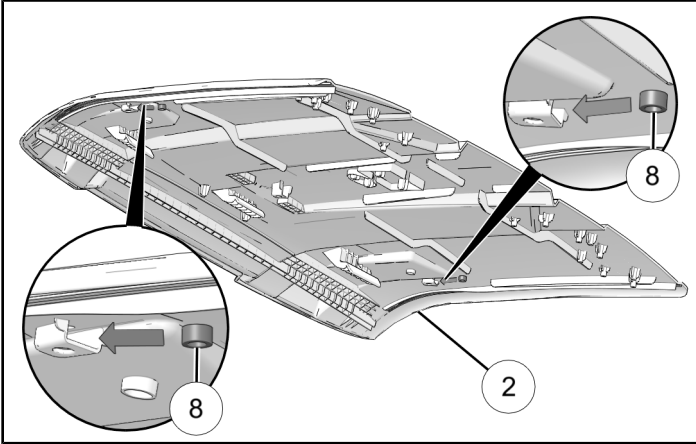
1. Install Roof Seal Kit (included) using instructions included in kit.

PREPARE FRONT ROOF PANEL

1. Install two spacers ⑧ into each standoff on front roof panel ②. Set front roof panel aside.

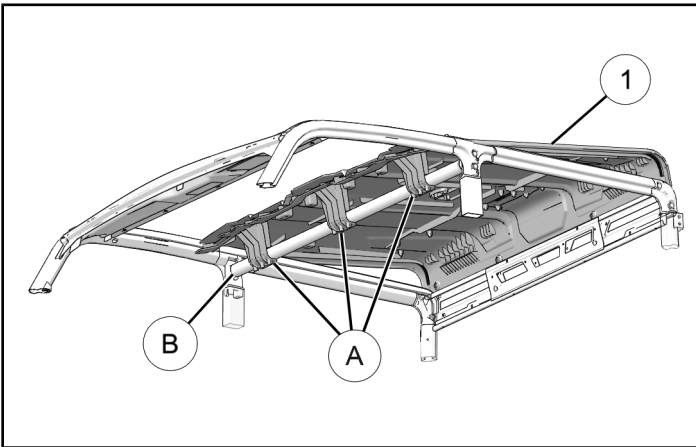
TIP

Use tape to prevent spacer from falling out of standoff during roof installation.

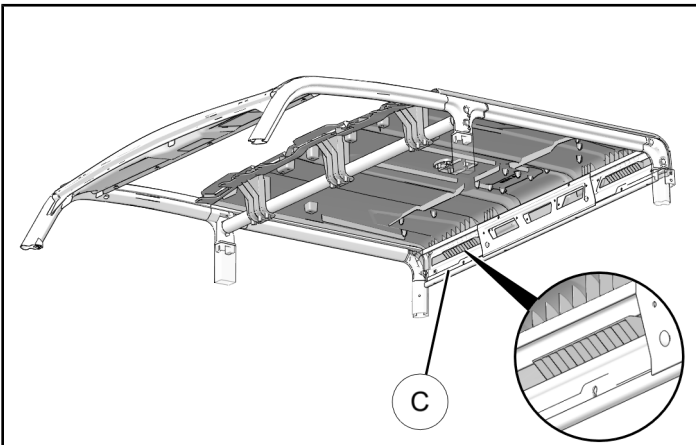


INSTALL ROOF PANELS TO ROPS

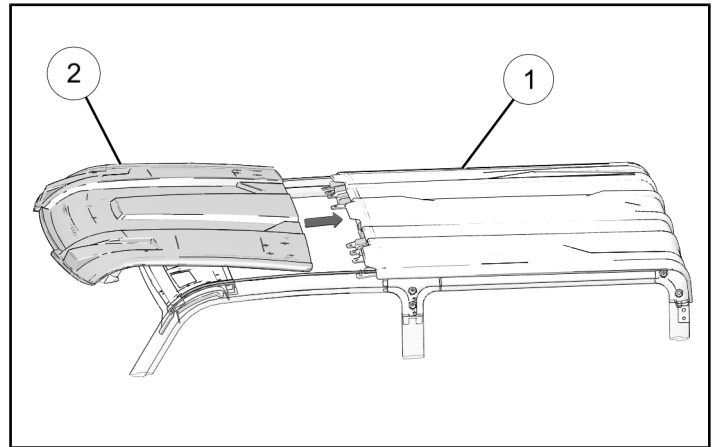
1. Hold rear roof panel ① at an angle and attach three hooks ④ onto ROPS bar ⑤.



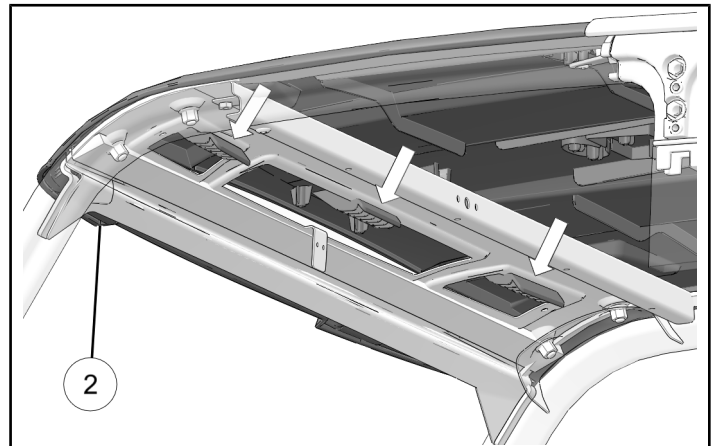
2. Install two rearward roof panel tabs into C-pillar cross member ③.



3. Install rearward edge of front roof panel ② into channel on forward edge of rear roof panel ①.



4. Install hooks on front roof panel ② through openings in ROPS visor. Move roof panel rearward until hooks lock into visor.

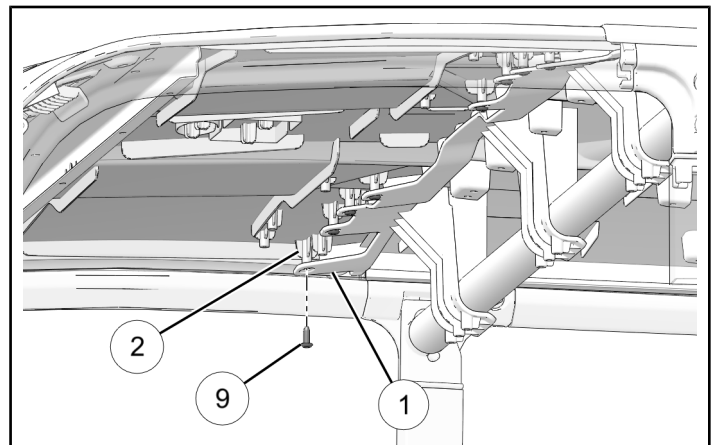


ATTACH REAR ROOF PANEL

1. Attach rear roof panel ① to front roof panel ② using eight screws ⑨. Torque to specification.

TORQUE

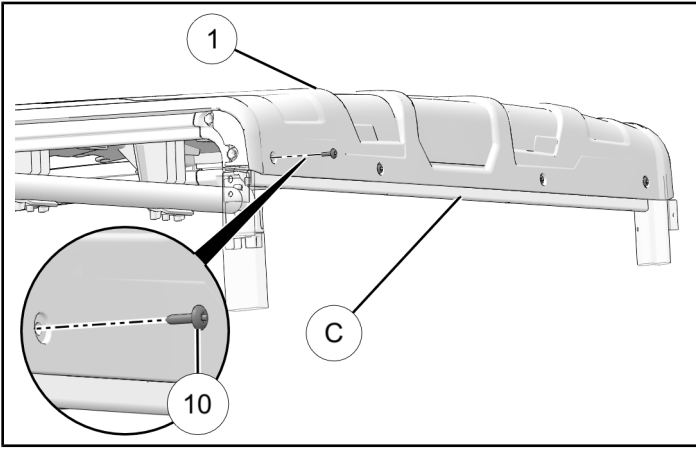
Roof Panel Screws ⑨:
20 in-lbs (2 N·m)



2. Attach rear roof panel ① to C-pillar cross member ③ using four screws ⑩. Torque to specification.

TORQUE

Rear Roof Panel Screws ⑩:
42 in-lbs (5 N·m)



ATTACH FRONT ROOF PANEL (MY19 AND OLDER)

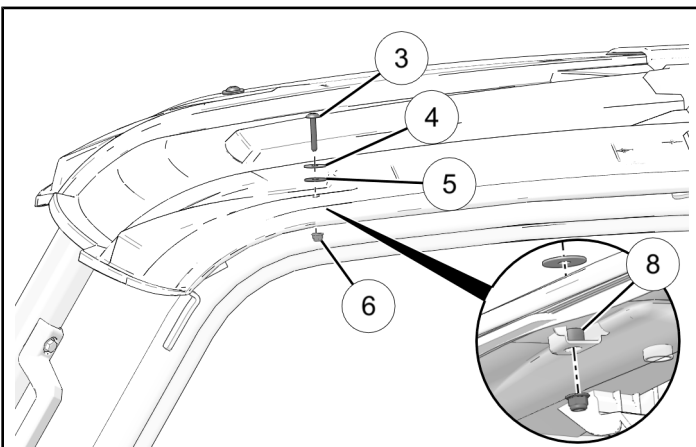
1. Make sure hooks on front roof panel ② are locked onto ROPS visor.
2. Install screw ③, steel washer ④, and rubber washer ⑤ into roof, through spacer ⑧, and into nut ⑥. Torque to specification.

NOTICE

Make sure steel washer is installed against screw head and rubber washer is installed against the roof panel.

TORQUE

Front Roof Panel Screw ③:
42 in-lbs (5 N·m)



3. Repeat for opposite side.

ATTACH FRONT ROOF PANEL TO ROPS (MY20 AND NEWER)

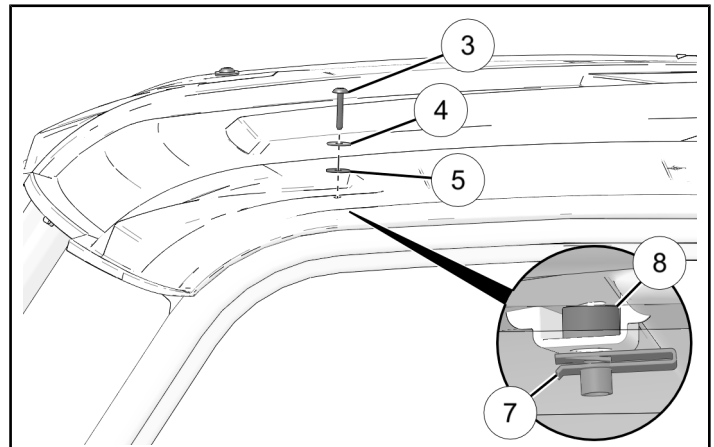
1. Make sure hooks on front roof panel ② are locked onto ROPS visor.
2. Install screw ③, steel washer ④, and rubber washer ⑤ into roof, through spacer ⑧, and into speed nut ⑦. Torque to specification.

NOTICE

Make sure steel washer is installed against screw head and rubber washer is installed against the roof panel.

TORQUE

Front Roof Panel Screw ③:
42 in-lbs (5 N·m)



3. Repeat for opposite side.

INSTRUCTION FEEDBACK FORM

A feedback form has been created for the installer to provide any comments, questions or concerns about the installation instructions. The form is viewable on mobile devices by scanning the QR code or by clicking [HERE](#) if viewing on a PC.

