

RANGER MIDSIZE WINCH KIT

POLARIS

ENGINEERED PARTS
ACCESSORIES & APPAREL

P/N 2881669

APPLICATION

ALL MY RANGER 400; MY11 AND NEWER RANGER 500 EXCEPT CREW

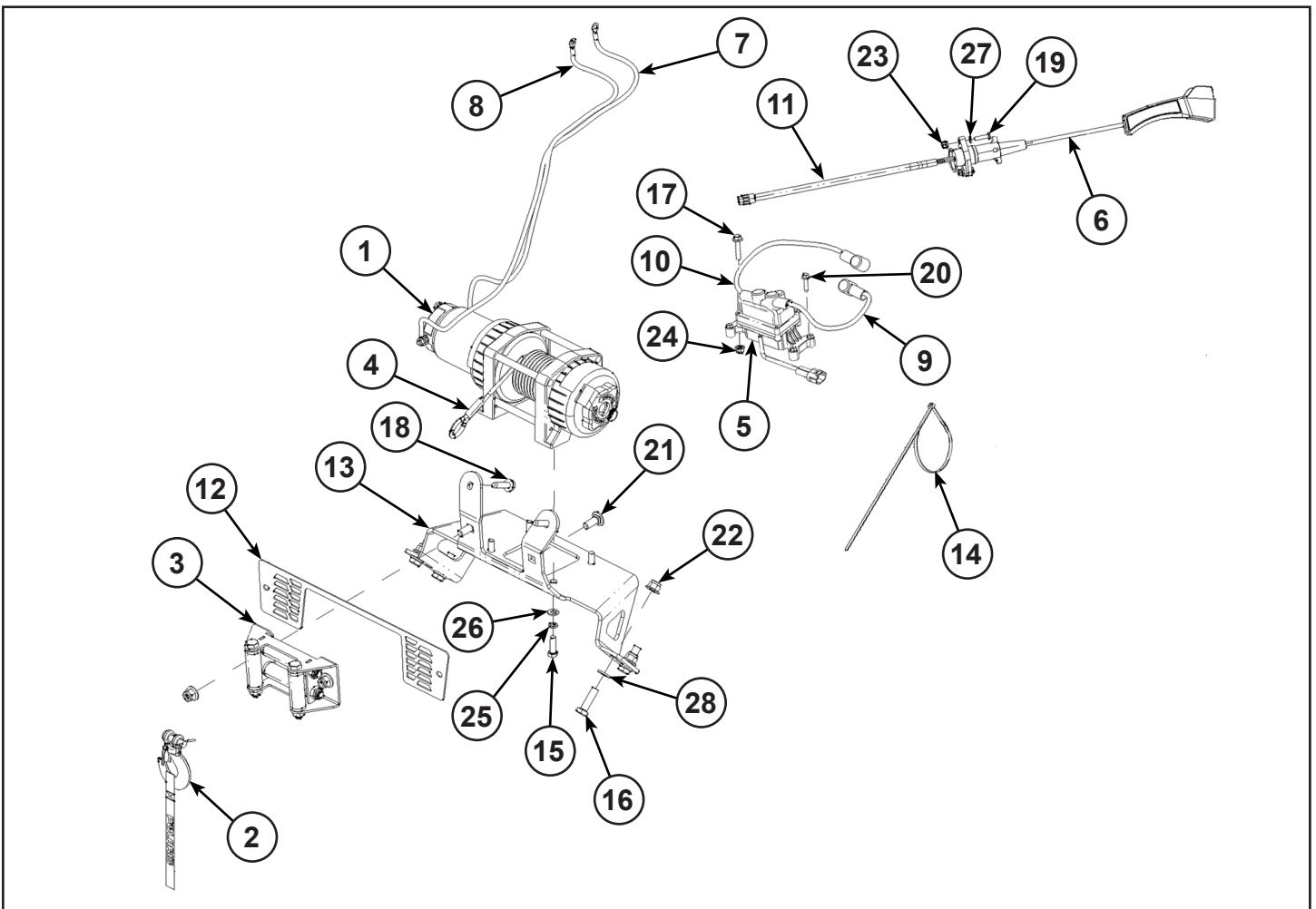
BEFORE YOU BEGIN

Read these instructions thoroughly and make sure all parts and tools are accounted for. Please retain these installation instructions for future reference and parts ordering information.

NOTE: You must order power cables separately to connect your battery to the vehicle bus bar.

- 2881684: 2 Passenger Models
- 2881685: Crew Models

KIT CONTENTS



Ref	Qty	Part Description	Part Number
1	1	Winch-POLARIS,3.5	2204630
2	1	Hook-Latch, Winch	2411836
3	1	Roller-Fairlead, Winch	2411848
4	1	Cable Winch Steel	2878890
5	1	Contacto Winch	4015095
6	1	Remote-Switch, Winch	4013466
7	1	Cable-Winch, Yellow, 6 GA, 740 MM	4013468-740
8	1	Cable-Winch, Blue, 6 GA, 740 MM	4013469-740
9	1	Power Cable, Winch, Black	4013470-480
10	1	Power Cable, Winch, Red	4013471-480
11	1	Socket-Winch Ring Terminal	4013569
12	1	Grill-Fairlead Cover	5255409
13	1	Mount Bracket-Winch	5255412
14	10	Panduit Strap	7080492
15*	4	Screw-HH-M8 X 1.25 X 25	-
16*	4	Screw-HH-M10 X 1.5 X 35	-
17*	4	Screw-HH-M6 X 1.0 X 30	-
18*	2	Screw-TFHFL, 5/16" -18x1.25, Self-Tapping	-
19*	2	Screw-M5 X 0.8	-
20*	2	Screw-TFHFL-M6 X 1.0 X 25	-
21*	2	Screw-RHCAR-M10 X 1.5 X 25	-
22*	6	Nut-M10 X 1.5	-
23*	2	Nut-M5 X 0.8	-
24*	4	Nut-HXFL-M6 X 1.0	-
25*	4	M8 Lock Washer	-
26*	4	Washer-0.62 X 0.330 X 0.060	-
27*	2	M5 Flat Washer	-
28*	8	Washer-10.5 X 20.0 X 2.0	-
	1	Winching Guide	9923644
	1	Instructions	9926741
		Internal Cam Service Kit (includes internal cam for freespool handle to connect winch to a replaceable handle, purchase handle separately)	2205497
		Service Handle (includes freespool handle and screw)	2205265

ITEMS MARKED (*) ARE INCLUDED IN HARDWARE KIT PN 2878894.

TOOLS NEEDED

Standard and Metric Socket Set

Standard and Metric Wrench Set

Drill and Drill Bit Set

APPROXIMATE ASSEMBLY TIME

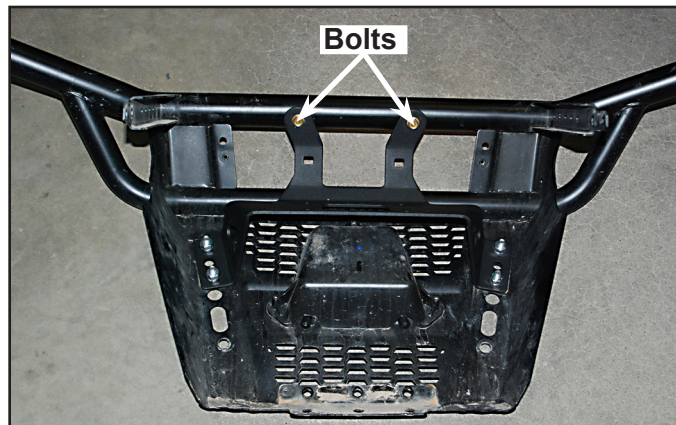
60 min

IMPORTANT

Your Polaris *RANGER* MIDSIZE WINCH KIT is exclusively designed for your vehicle. Please read the installation instructions thoroughly before beginning. Installation is easier if the vehicle is clean and free of debris. For your safety, and to ensure a satisfactory installation, perform all installation steps correctly in the sequence shown.

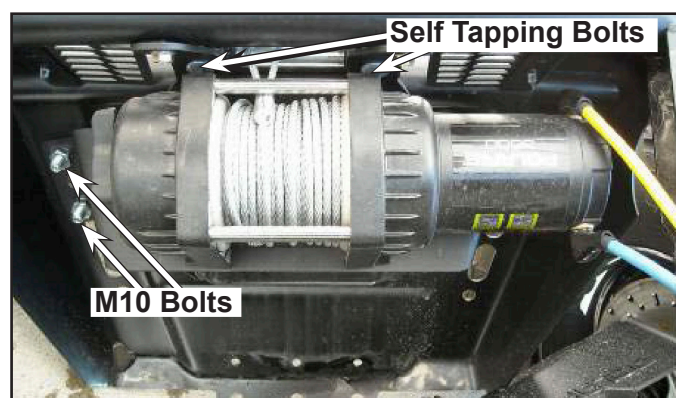
INSTALLATION PREPARATIONS

1. Remove the driver seat and disconnect the positive (red) wire and the negative (black) wire from the battery using a 10 mm wrench.
2. Remove the front bumper by removing seven bolts (two per side, three on bottom of bumper).
3. Remove grill screen from bumper.



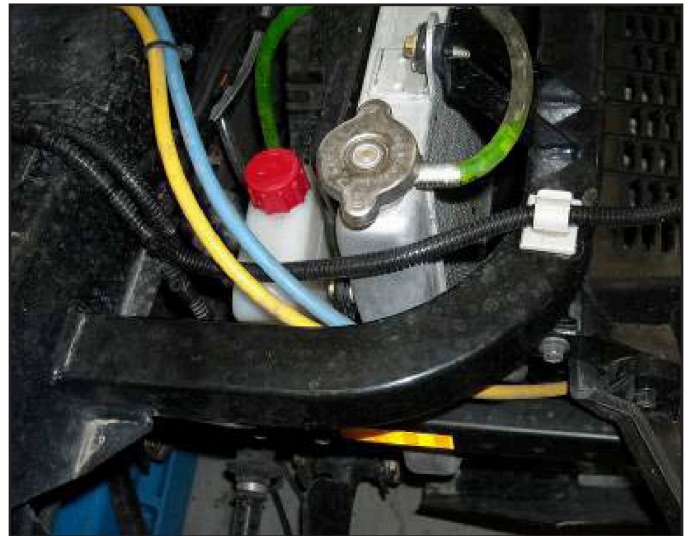
WINCH INSTALLATION

1. Attach winch bracket to front bumper using four M10 x 30 mm bolts, M10 nuts (not nyloc nuts) and two self-tapping bolts. A lock washer should be used under the head of each through bolt and under each nut.
2. Install new grill screen with winch opening using original hardware.
3. Attach roller fairlead with M10 carriage bolts and nylock nuts to winch bracket with the warning decal facing up so it is readable.
4. Route winch cable from back side of bumper through roller fairlead. Attach winch hook to cable.
5. Install winch to mounting bracket using four M8 x 1.25, split washers and flat washers.
6. Reinstall bumper. Thread in all seven bolts before tightening. Tighten the lower bolts first, then the two bolts on either side of the bumper.



CONTACTOR INSTALLATION

1. Locate the blue and yellow wires from the kit. Place the two terminal rubber boots on the blue and yellow wires before securing them to the corresponding colored motor terminals on the winch motor. Orient cables as shown in figure. Slide terminal boots over end of cable and connecting bolt.
2. Route cables from winch around passenger side of radiator and frame tube. Secure cables to frame or other solid member at any point where contact is made to prevent chafing. Secure cables away from any moving parts.

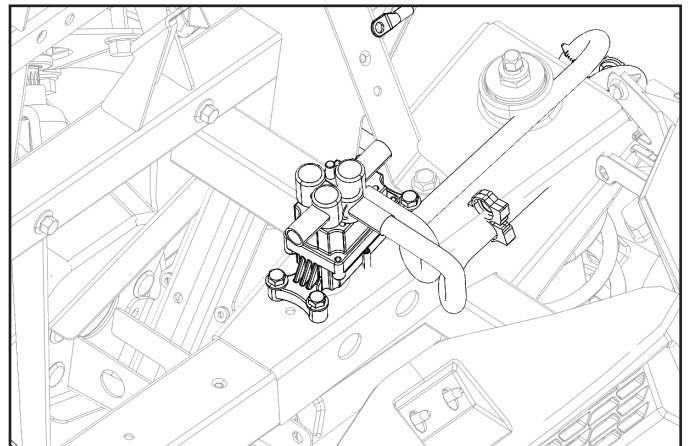
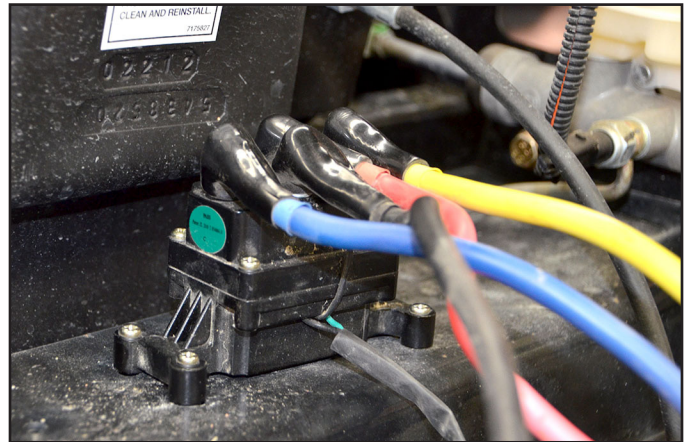


3. **On MY10-14 Rangers:** Install contactor to center frame member under hood using four M6 x 1.0 x 30 mm bolts as shown in figure.

On MY15 and Newer Rangers: Install contactor to frame over strut mount using two M6 self tapping screws.

Install red and black power cables (not included with this kit, see Page 1).

4. Attach black boots to ends of red, black, yellow, blue wires, and attach them to the corresponding colored contactor posts.
5. Route red and black cables through the rubber boots. Fasten the long red and black cables to the contactor posts marked with the matching color.
6. For MY15 Vehicles, attach both long and short black and red cables to connector. Run short (480 mm) cables from connector to bus bar and secure with nuts pre-installed on bus bar.



7. Remove the center floor section of the vehicle.
8. Route the red and black cables along the main wire harness from contactor to battery, attaching the red and black cables to the main wire harness in several places with plastic ties as shown in figure. Route cables up to battery but do not connect at this time.
9. Double-check wire routing to make sure the red and black cables are secured away from any moving or potentially hot parts. Reinstall floor.



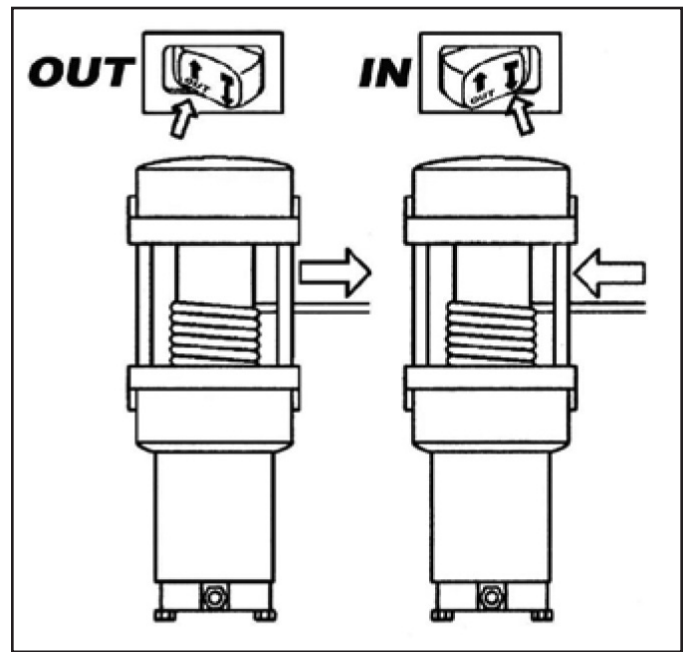
REMOTE SOCKET INSTALLATION

⚠ WARNING	
	<p>TO PREVENT SERIOUS INJURY OR DEATH FROM EXPLOSION:</p> <ul style="list-style-type: none"> • Do not drill into gas tank. • Verify the area is clear behind the mounting location before drilling.

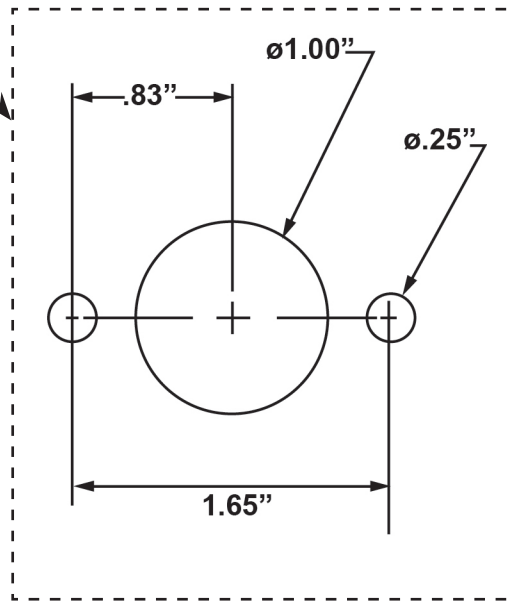
1. Determine the mounting location for the remote socket (suggested location is to the left of the steering wheel on the dash). Confirm that the wiring will reach the contactor and bus bar.
2. Place template from Page 5 on vehicle with tape and drill a 7/8" diameter hole in the location where you wish to install the electrical socket. Using the template as a guide, drill two holes with a #10 drill bit. Fasten the socket to the vehicle using two M5 screws, two washers and two nuts.
3. Connect the wires from the contactor and the electrical socket. Connect the ring terminal from the electrical socket to the keyed power terminal on the bus bar under the hood. The keyed power terminal, should have at least one orange or orange/white wire attached.
4. Verify function of winch.
5. Re-connect the main vehicle power cables and winch power cables to the battery using the original hardware.

FINAL INSTALLATION

1. Reinstall seat. Connect winch remote control to electrical socket.
2. Confirm that all wiring is correct.
3. All loose wires need to be wrapped tight, and secured away from moving parts and heat sources.
4. Confirm that there are no exposed wires or terminals.
5. With the vehicle key in the ON position, check winch for proper operation.
6. Retighten all hardware after 30 minutes of riding.



Cut On Dotted Line



Measure the template after printing to be sure the template has printed correctly