

ENGINE BRAKING CLUTCH KIT



POLARIS
The Way Out.®

KIT PN 2876212 (Sportsman 700 EFI)

KIT PN 2876211 (Sportsman 800 EFI)

Application

2007 Sportsman 700 EFI and 800 EFI

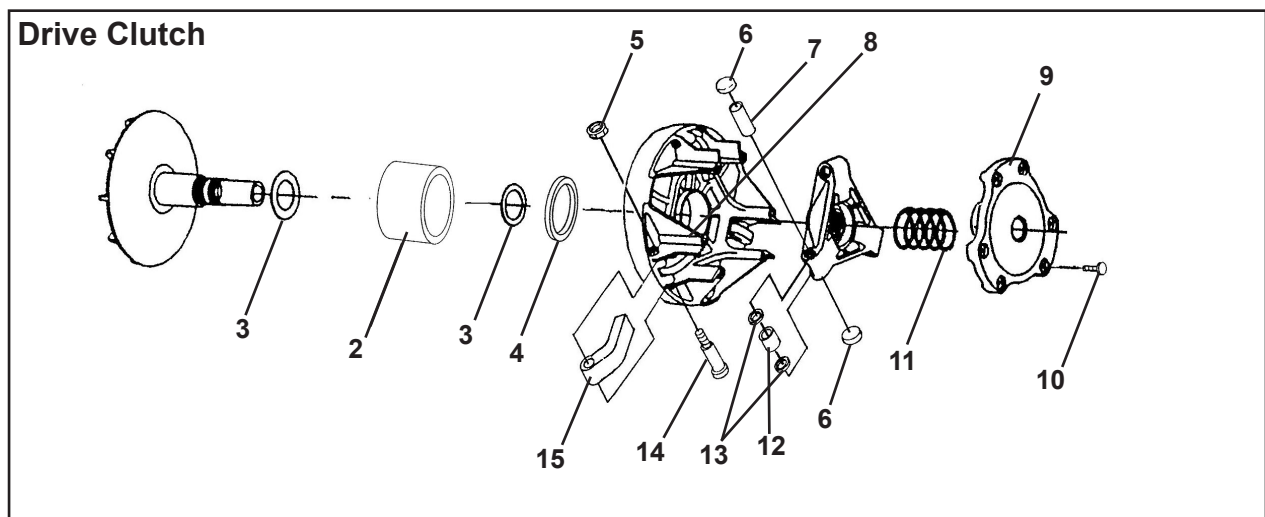
Before you begin, read these instructions and check to be sure all parts and tools are accounted for. Please retain these installation instructions for future reference and parts ordering information.

IMPORTANT: Due to the complexity of this kit, it must be installed by a qualified Polaris dealer. Before you begin, read these instructions and check to be sure all parts and tools are accounted for. Please retain these installation instructions for future reference and parts ordering information..

This Kit Includes:

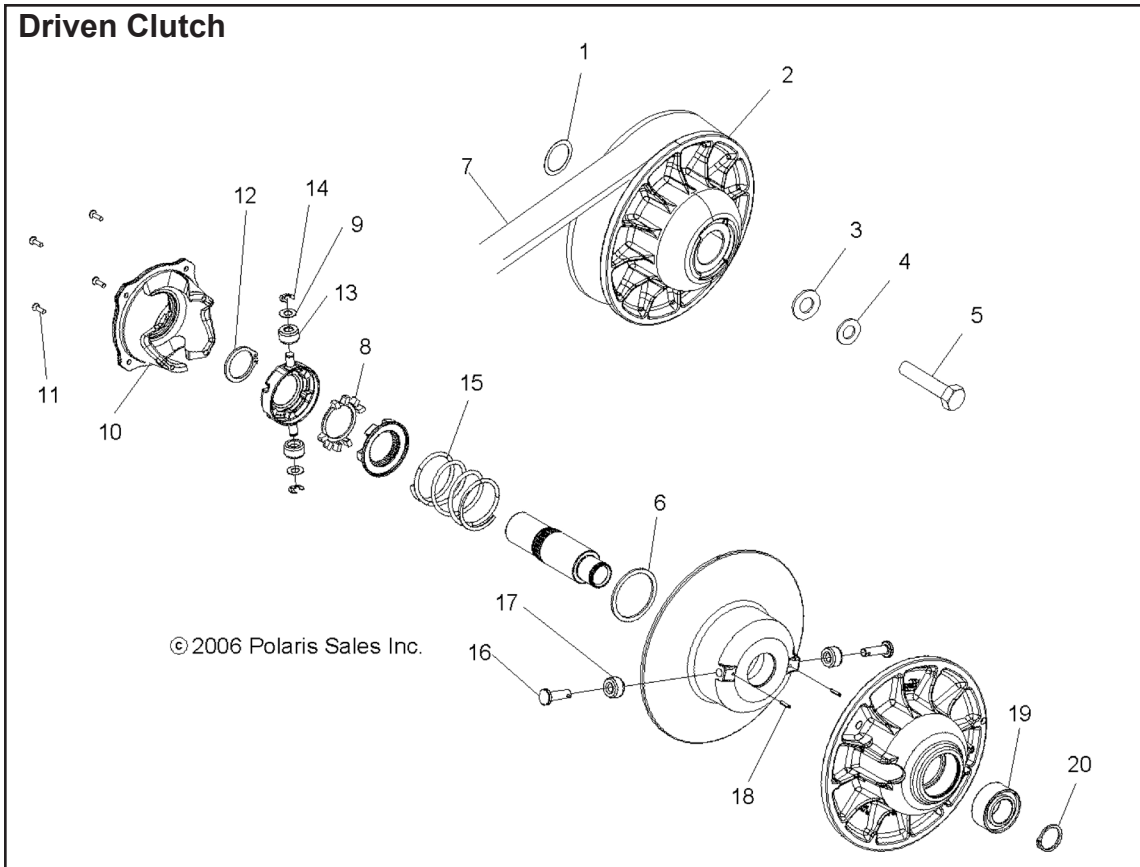
Qty.	Part Description	Part No.
1	Drive Clutch Asm.	1322736 (Sportsman 800 only)
1	Drive Clutch Asm.	1322677 (Sportsman 700 only)
1	Driven Clutch Asm.	1322707 (Sportsman 800 only)
1	Driven Clutch Asm.	1322706 (Sportsman 700 only)
1	Belt	3211113
1	Decal	7077666
1	Instruction	9921001

Service parts available for this kit include the following part:



Drive Clutch

No.	Qty	Part Description	Part No.
1	1	Asm. Drive Clutch (incl. 2-10, 12-14)	1322673
2	1	Asm. Drive Clutch, Smooth Oneway	1520836
3	2	Washer, Clutch	7556335
4	1	Spacer	5631674
5	3	Nut, Flexloc	7541906
6	6	Button, Clutch	5431936
7	3	Pin, Roller	5020422
8	1	Bearing	3514492
9	1	Cover, Bearing	3576510
10	6	Screw	7518062
11	1	Spring, Clutch	7041157 (SP 700)
	1	Spring, Clutch	7043199 (SP 800)
12	3	Asm. Roller and Bushing	1321622
13	6	Washer	5430945
14	3	Bolt, Shoulder	7512266
15	3	Weight, Shift, 20-58	5631216 (SP 700)
	3	Weight, Shift, 20-62	5631700 (SP 800)



Driven Clutch

No.	Qty	Part Description	Part No.
1	AR	Bushing	7556120
2	1	Asm. Driven Clutch, EBS (incl. no. 3,7,8, 11-17)	1322706 (SP 700 EFI)
	1	Asm. Driven Clutch, EBS (incl. no. 3,7,8, 11-17)	1322707 (SP 800 EFI)
3	1	Washer, Domed	5250562
4	1	Washer, Spring Lock	7552901
5	1	Bolt	7515327
6	1	Washer, Thrust	3234200
7	1	Belt, Drive, EBS	3211113
8	1	Ring, Retainer, Spring, Inner	7710564
9	2	Washer	7556226
10	1	Asm cam	3234356(SP 700 EFI)
	1	Asm cam	3234234(SP 800 EFI)
11	4	Screw, Cap	3234192
12	1	Ring Retaining	7710522
13	2	Roller, Clutch	3234207
14	2	E-Ring, Retaining	7710523
15	1	Spring, Compression, Yellow	3234451(SP 700 EFI)
	1	Spring, Compression, Red, Yellow	3234452(SP 800 EFI)
16	2	Pin, Roller	3234201
17	2	Roller, Clutch	3234197
18	2	Pin, Spring Slotted	3234202
19	1	Bearing, Ball	3234203
20	1	Ring, Retaining	3234205

You will need to supply:

T Handle Clutch Puller (PN 2870506)

Driven Clutch Puller (PN 2870913)

IMPORTANT: For your safety, and to ensure a satisfactory installation, perform all installation steps correctly in the sequence as shown on the attached instructions.

INSTALLATION INSTRUCTIONS

The installation of the engine braking clutch is nearly identical to the procedure for a standard clutch. Refer to the PVT System section of the ATV Service Manual for details. Some suggestions to ease the installation follow:

1. Remove the clutch cover and existing clutch, if installed.
2. The sheaves of the driven clutch are held together by the force of the spring. Force open the sheaves and, measuring from the outer edge of the sheaves, position the belt so it is approximately 1, inside the sheaves.
3. Release the sheaves. The spring force will clamp the belt and hold it in place.
4. Slip the loose side of the belt onto the drive clutch.
5. Install the driven clutch, drive clutch and belt on the machine as a unit. Install retaining bolts and washers and torque to Service Manual Specifications.
6. Place the gear selector in neutral. Rotate the driven clutch by hand clockwise (backwards) until the belt adjusts itself to run near the outside diameter of the driven sheaves. NOTE: No shims for adjusting belt deflection are needed in this clutch.
7. Reinstall the clutch cover.

OPERATION RECOMMENDATIONS AND EXPECTATIONS

1. For best performance and belt life, use low-range in down hill applications, soft terrain and heavy pulling.
2. Before any repairs are done on this clutch, contact the Service Department.