

# REAR BULL BUMPER KIT



**P/N 2881472**

## APPLICATION

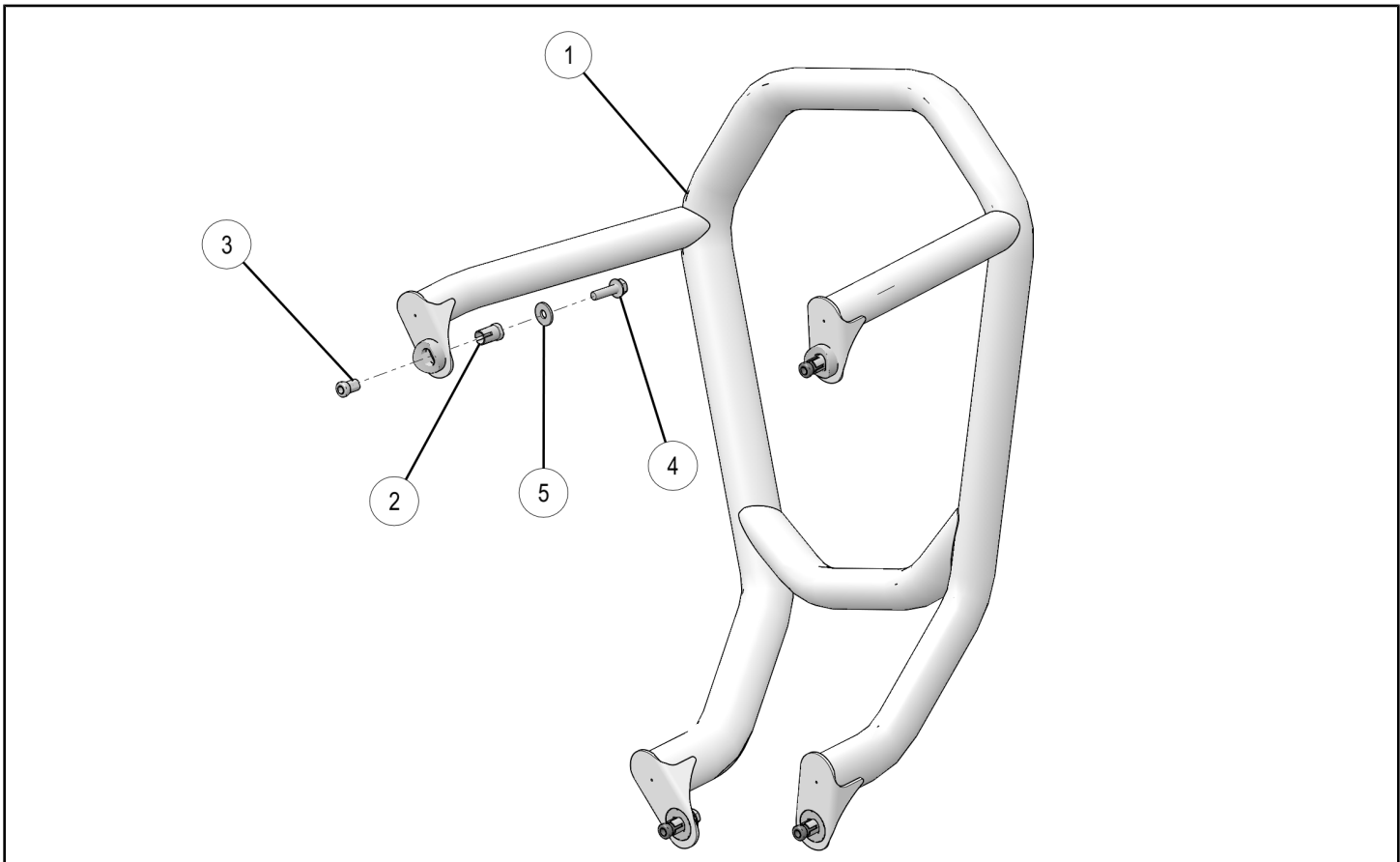
RZR XP 1000, RZR XP 4 1000

## BEFORE YOU BEGIN

Read these instructions and check to be sure all parts and tools are accounted for. Please retain these installation instructions for future reference and parts ordering information.

## KIT CONTENTS

This Kit includes:



REF	QTY	PART DESCRIPTION	PART NUMBER
1	1	Welded Rear Bull Bumper	1021770
2*	4	Anchor Expansion Tube	5337853
3*	4	Cast Threaded Anchor Wedge	5632958
4*	4	Screw, Hex Flange - M8 X 1.25 X 30	7518884
5*	4	Washer - 8.3 X 22 X 2.2	7556341
	1	Instructions	9926368

Items marked (\*) are included in Hardware Kit PN 2206081.

## TOOLS REQUIRED

- Metric Socket Set
- Torque Wrench

- Safety Glasses

## IMPORTANT

Your REAR BULL BUMPER KIT is exclusively designed for your vehicle. Please read the installation instructions thoroughly before beginning. Installation is easier if the vehicle is clean and free of debris. For your safety, and to ensure a satisfactory installation, perform all installation steps correctly in the sequence shown.

## ASSEMBLY TIME

Approximately 25 minutes

## INSTALLATION INSTRUCTIONS

1. Park vehicle. Turn key to "OFF" position and remove from vehicle.
2. Guide bumper ① into position so that all four expansion anchors ②③ fully engage frame mounting holes as shown.

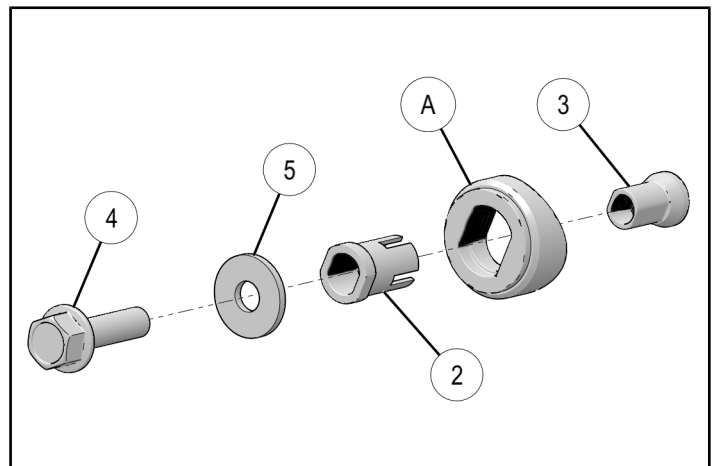
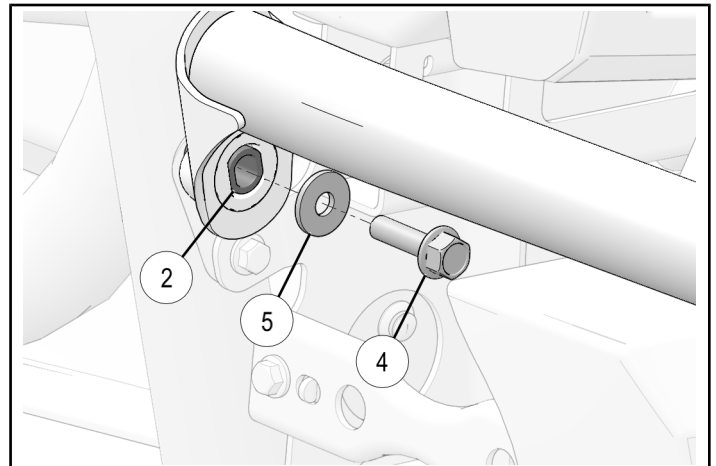
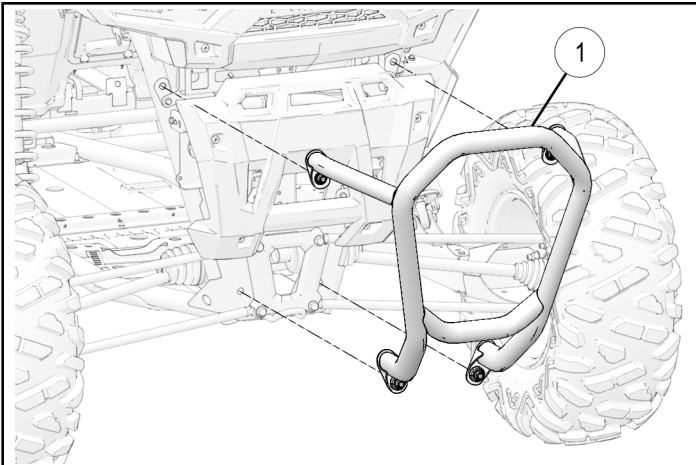
3. Ensure expansion anchors are fully seated by slowly rotating each screw ④ until flat faces of expansion tubes ② slip into and align with flat faces of bumper bracket (A) as shown.

### IMPORTANT

Bumper must be firmly seated against vehicle frame at all four points before tightening screws. Anchors are not intended to draw bumper and frame together.

### IMPORTANT

Failure to properly align flats will result in incomplete fastener engagement and improper torque application.



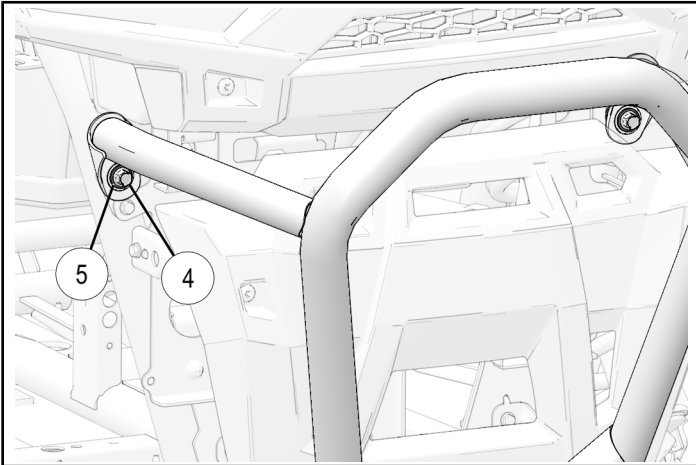
- While ensuring upper portion of bumper is firmly seated against vehicle frame, and flats are properly aligned, tighten two upper screws ④ and washers ⑤. Torque to specification.

### TORQUE

16 ft. lbs. (22 Nm)

### NOTE

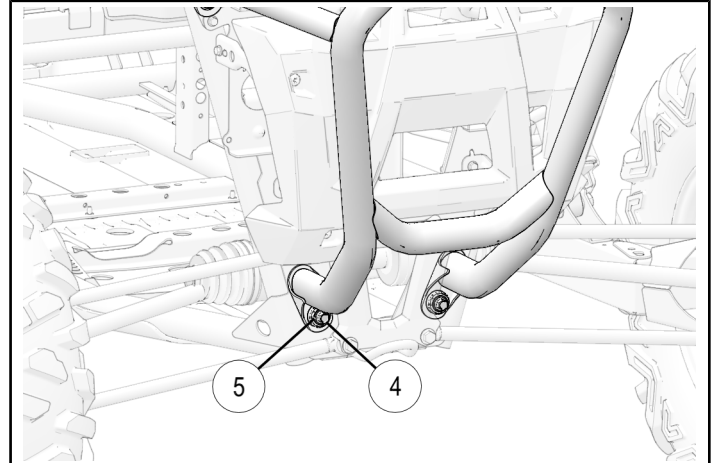
After expansion anchor begins expanding repositioning may become difficult.



- While ensuring lower portion of bumper is firmly seated against vehicle frame, and flats are properly aligned, tighten two lower screws ④ and washers ⑤. Torque to specification.

### TORQUE

16 ft. lbs. (22 Nm)



## REMOVAL INSTRUCTIONS

### NOTE

Bumper re-installation requires new Hardware Kit PN 2206081 (purchased separately).

### Tools Required

- Metric Socket Set
- Safety Glasses
- Pin Punch
- Locking Pliers

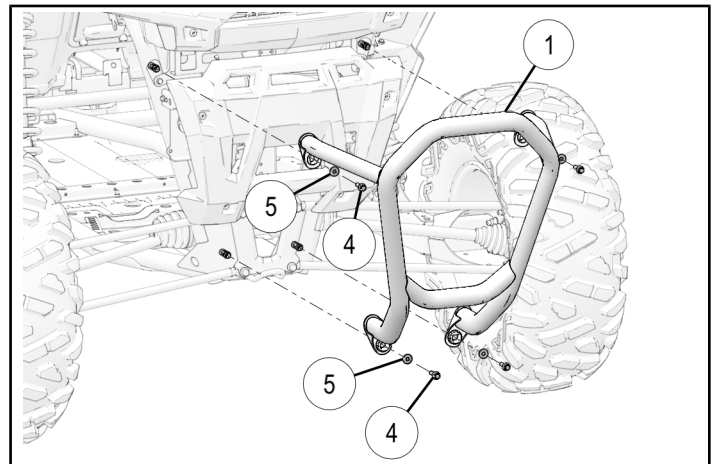
### CAUTION

Bumper weighs approximately 11 lbs. (49 N). Failure to adequately support bumper during removal may result in personal injury or damage to equipment.

- Remove upper and lower screws ④ and washers ⑤. Remove bumper ①.

### NOTE

Bumper may need to be wobbled back and forth to allow anchor expansion tubes ② to pass through bumper bracket holes.



2. Using pin punch, drive wedge ③ through expansion tube ② into frame at each attach point.

3. Using arc-joint pliers, grasp expansion tube ② and remove from frame at each attach point. Discard old hardware.

