

ROCK SLIDER KIT



P/N 2882695

APPLICATION

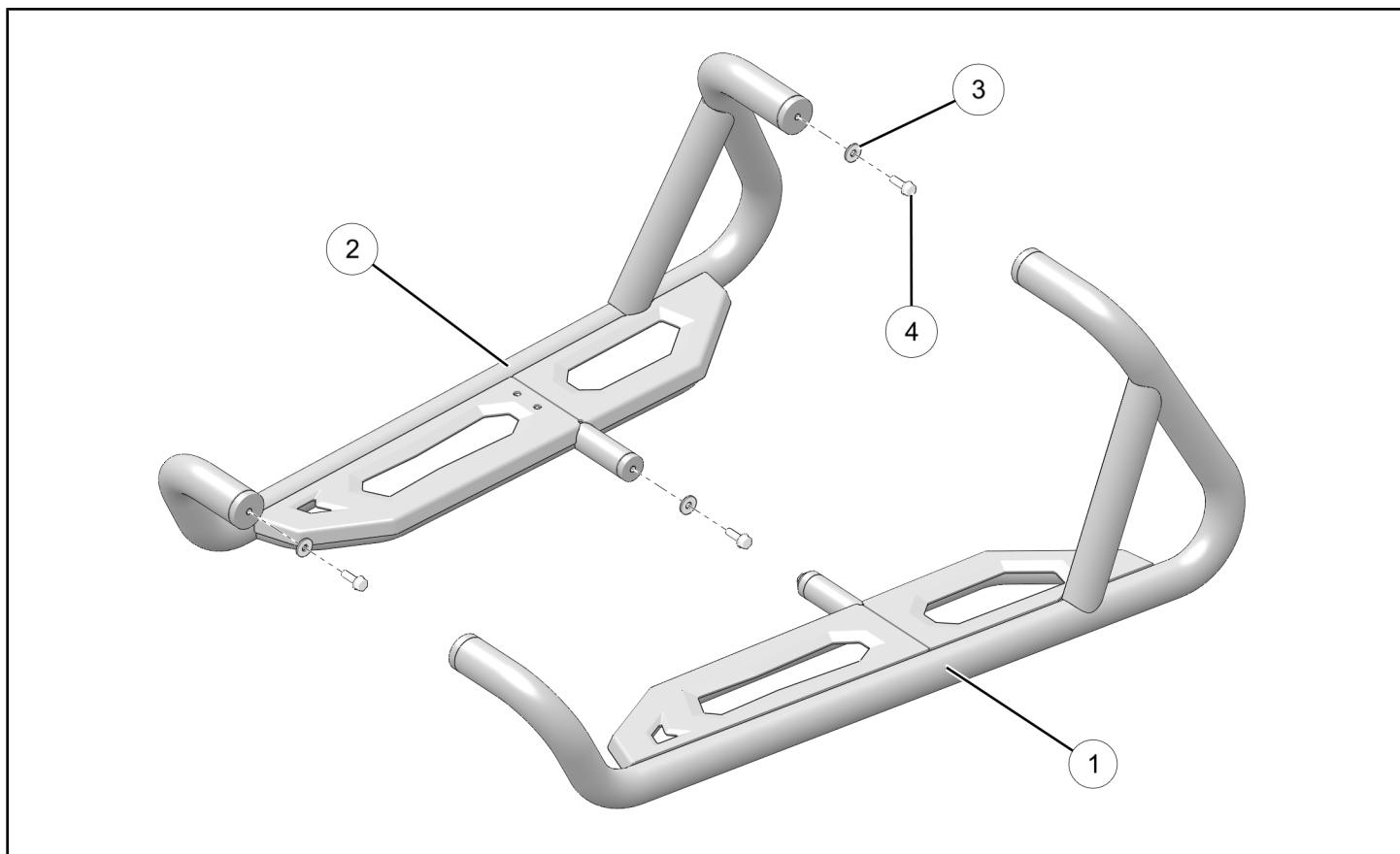
Verify accessory fitment at Polaris.com.

BEFORE YOU BEGIN

Read these instructions and check to be sure all parts and tools are accounted for. Please retain these installation instructions for future reference and parts ordering information.

KIT CONTENTS

This Kit includes:



REF	QTY	PART DESCRIPTION	PART NUMBER
1	1	Rock Slider, LH	-
2	1	Rock Slider, RH	-
3*	6	Washer - 0.327 X 0.875 X 0.090	7556341
4*	6	Screw, Hex Flange - M8 X 1.25 X 25	7516734
	1	Instructions	9927964

Items marked (*) are included in Hardware Kit PN 2207095.

TOOLS REQUIRED

- Safety Glasses
- Drill
- File, Round (or equivalent)
- Hole Saw: 1–3/4 inch (44 mm)

- Screwdriver Set, Torx®
- Socket Set, Metric
- Torque Wrench

IMPORTANT

Your Rock Slider Kit is exclusively designed for your vehicle. Please read the installation instructions thoroughly before beginning. Installation is easier if the vehicle is clean and free of debris. For your safety, and to ensure a satisfactory installation, perform all installation steps correctly in the sequence shown.

ASSEMBLY TIME

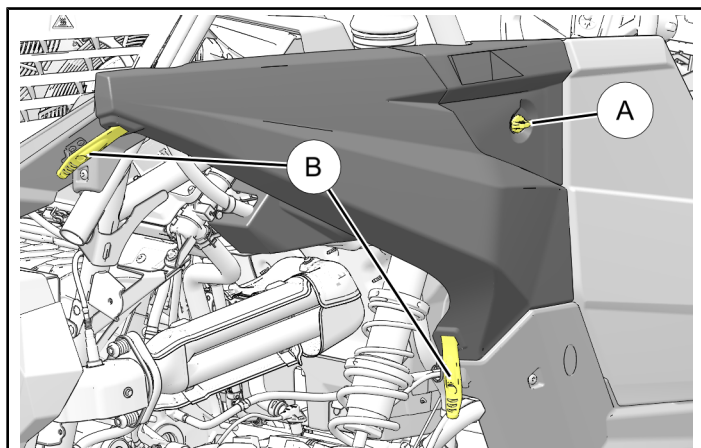
Approximately 20 minutes

INSTALLATION INSTRUCTIONS

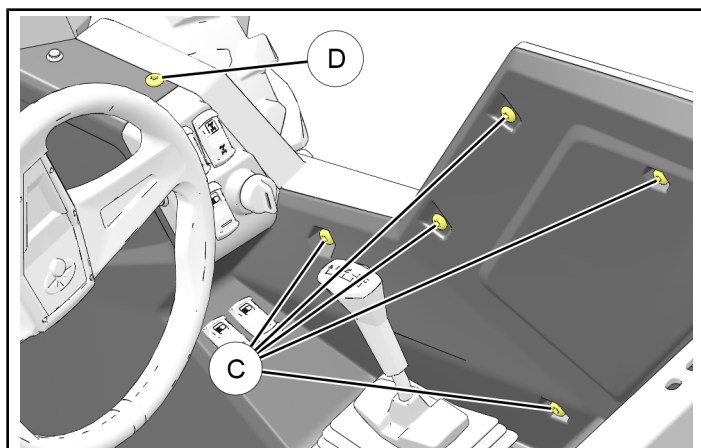
NOTE

Polaris recommends two people install this kit.

1. Shift vehicle transmission into “PARK”. Turn ignition key to “OFF” position and remove from ignition switch.
2. Gain RH access.
 - a. Remove RH rear fender by unlocking quarter turn latch (A) and unhooking two straps (B).



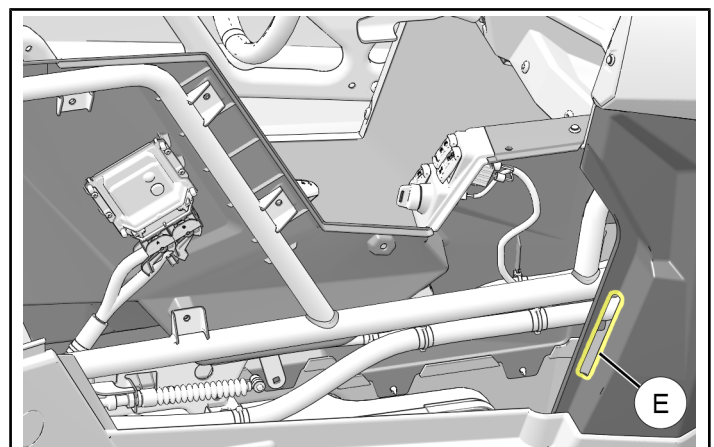
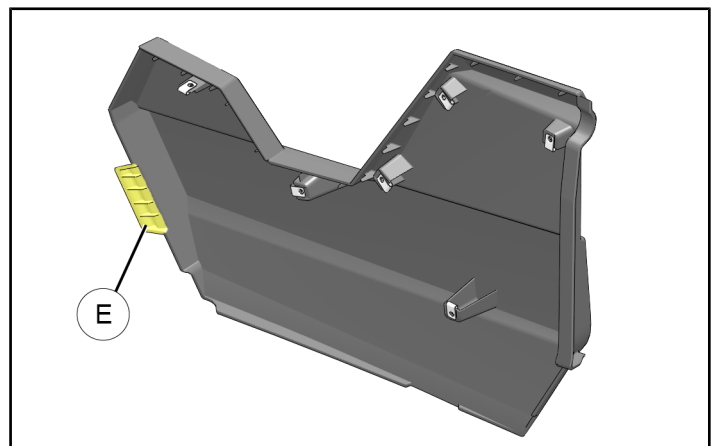
- b. Remove five screws (C) securing RH exterior body panel to frame. Retain screws.



- c. From outside of vehicle, and while supporting exterior body panel, remove final screw (D), then remove panel by detaching locking tab (E) from mating slot in front fender. Set panel aside.

NOTE

View of outer RH body panel, interior side.



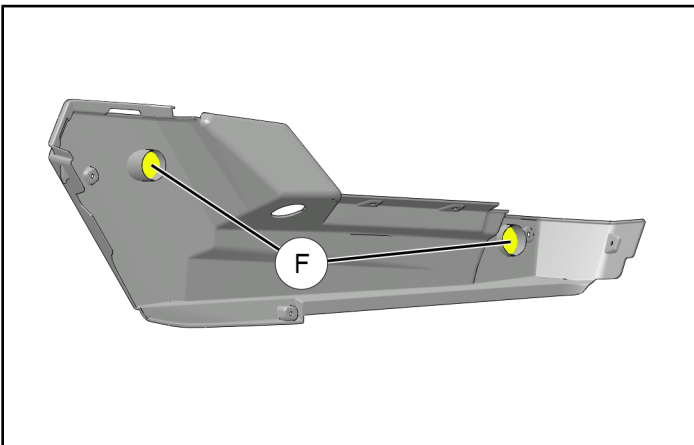
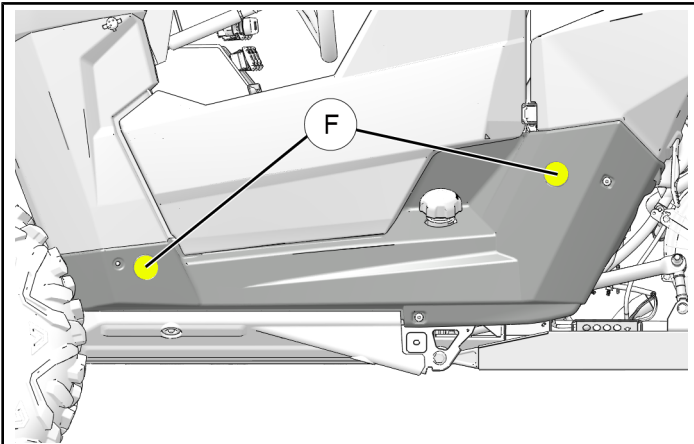
3. Use 1–3/4 inch (44 mm) hole saw to cut two openings in LH rocker panel at marked locations ⑥, then file hole edges as required. Ensure holes are accurately centered to prevent damage to rib on inboard side of panel.

IMPORTANT

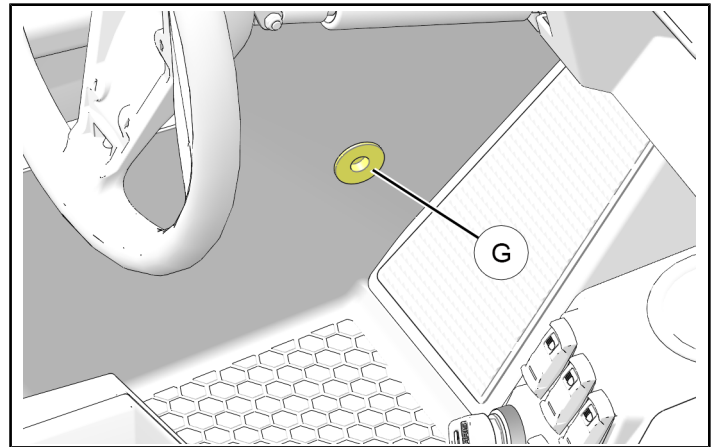
Control drill depth to prevent damage to underlying structure or components.

NOTE

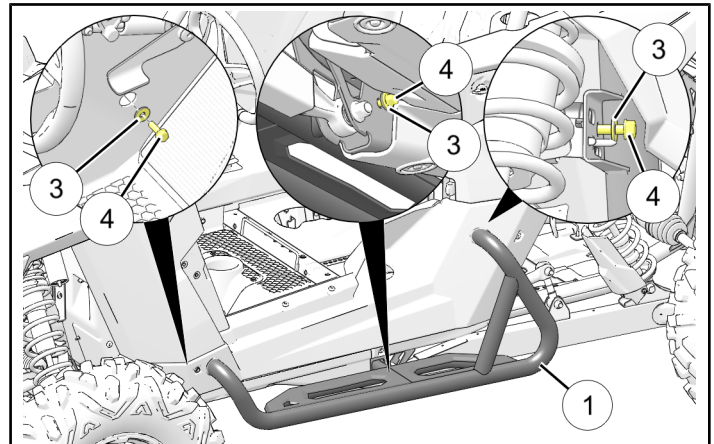
Rocker panel does not need to be removed to perform this step.



4. Remove plug ⑥ from interior LH side of floor pan.



5. Insert LH rock slider ① through front and rear rocker panel holes until slider contacts vehicle frame. Secure rock slider using three each screws ④ and washers ③.



6. Torque all screws ③ to specification.

TORQUE

16 ± 2 ft. lbs. (22 ± 2 Nm)

7. Reinstall plug ⑥ to interior LH side of floor pan.
8. Repeat Steps 3, 5, and 6 for RH side using rock slider ②.
9. Restore access.

FEEDBACK FORM

A feedback form has been created for the installer to provide any comments, questions or concerns about the installation instructions. The form is viewable on mobile devices by scanning the QR code or by clicking [HERE](#) if viewing on a PC.

FEEDBACK FORM

