

SPARE TIRE MOUNT KIT



P/N 2882738

APPLICATION

Verify accessory fitment at Polaris.com.

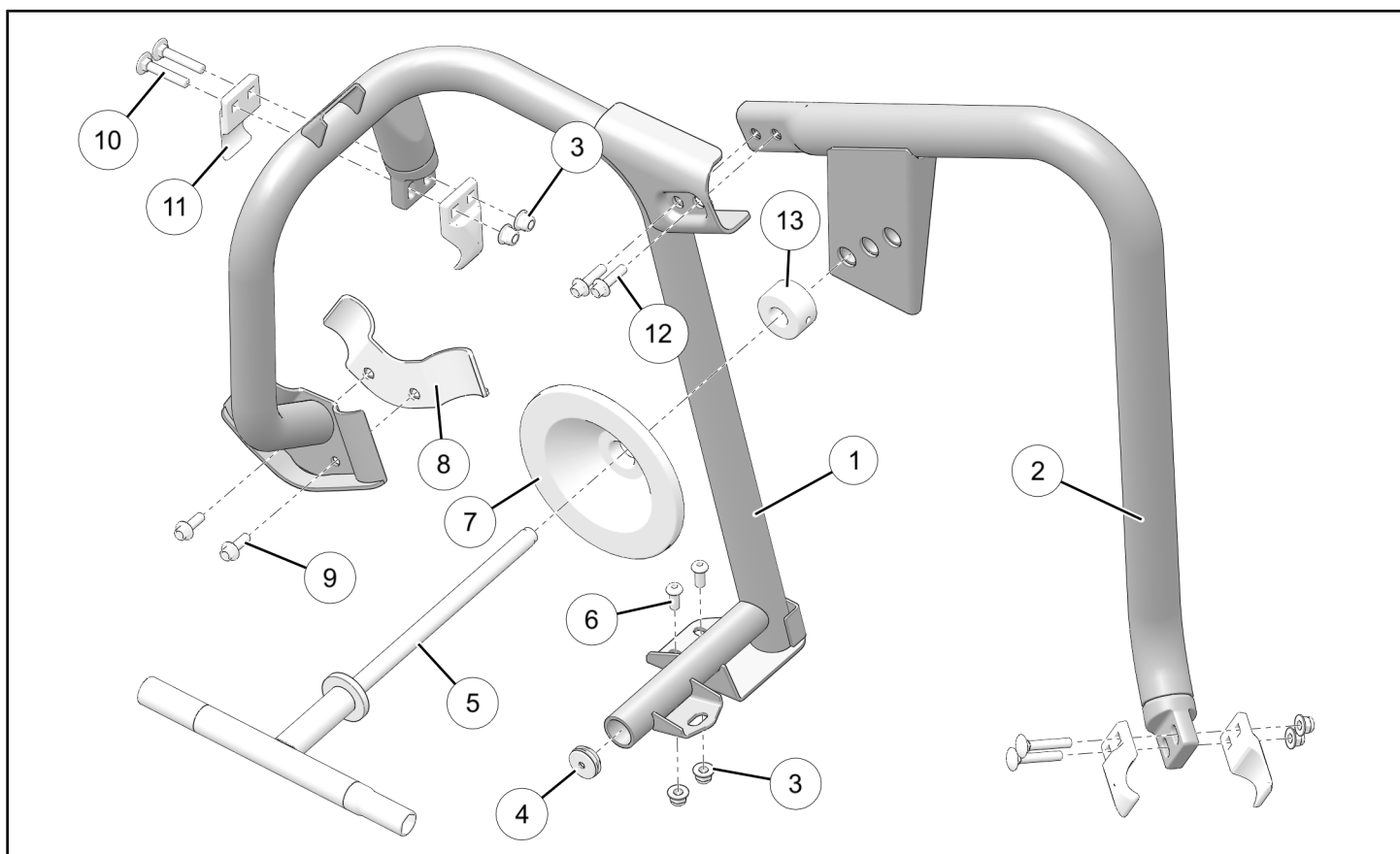
BEFORE YOU BEGIN

Read these instructions and check to be sure all parts and tools are accounted for. Please retain these installation instructions for future reference and parts ordering information.

KIT CONTENTS

This kit contains parts for installation of the Spare Tire Mount only. Prior installation of the Rock Slider Kit, PN 2882695, is also required (sold separately).

This Kit includes:



REF	QTY	PART DESCRIPTION	PART NUMBER
1	1	Frame, Rear	-
2	1	Frame, Front	1023785-458
3*	6	Nut, Hex Flange, Locking - M8 X 1.25	7547317
4*	1	Plug - 1.125 inch	5450653
5	1	Handle	1023786-458
6*	2	Screw, Socket Button Head, with Locking Patch - M8 X 1.25 X 20	7519229
7*	1	Retainer, Wheel	-

REF	QTY	PART DESCRIPTION	PART NUMBER
8	1	Bracket, Backer	5264624-458
9*	2	Screw, Hex Flange - M8 X 1.25 X 25	7518569
10*	4	Bolt, Carriage - M8 X 1.0 X 55	-
11	4	Clamp	5633088
12*	2	Screw, Hex Flange - M8 X 1.25 X 30	7518800
13	1	Spacer	-
	1	Instructions	9927978

Items marked (*) are included in Hardware Kit PN 2207096.

TOOLS REQUIRED

- Safety Glasses
- Hex Key Set, Metric
- Socket Set, Metric
- Torque Wrench

IMPORTANT

Your Spare Tire Mount Kit is exclusively designed for your vehicle. Please read the installation instructions thoroughly before beginning. Installation is easier if the vehicle is clean and free of debris. For your safety, and to ensure a satisfactory installation, perform all installation steps correctly in the sequence shown.

ASSEMBLY TIME

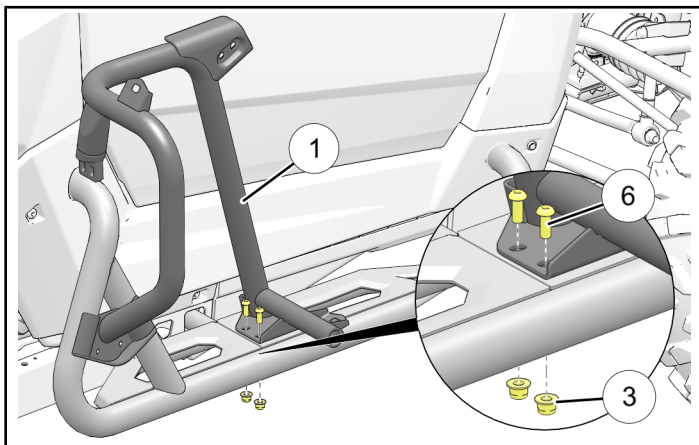
Approximately 15–20 minutes

INSTALLATION INSTRUCTIONS

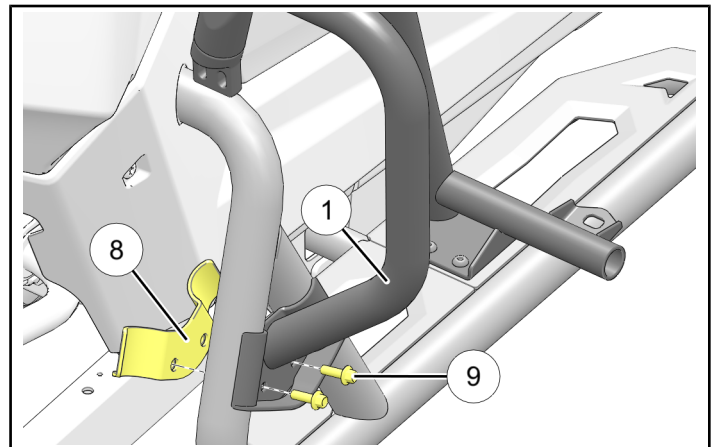
⚠ WARNING

Follow all directions carefully. Failure to comply may allow airflow, vibration, or other factors to separate spare tire from vehicle and cause an accident, resulting in serious personal injury or death.

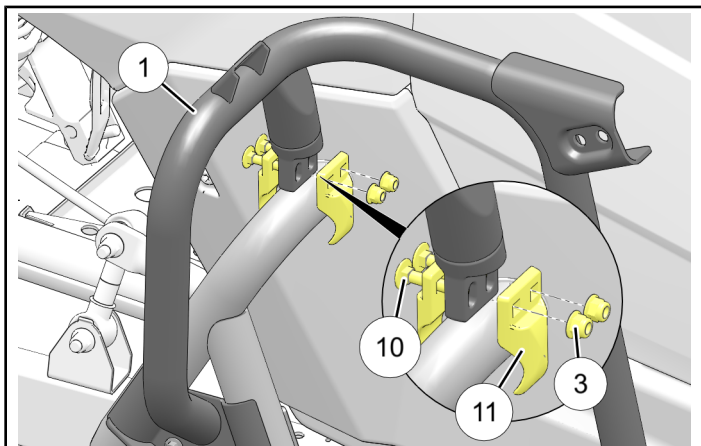
1. Shift vehicle transmission into “PARK”. Turn ignition switch to “OFF” position and remove key from switch.
2. Loosely install rear frame base plate ① to RH rock slider (sold separately) using two each screws ⑥ and nuts ③.



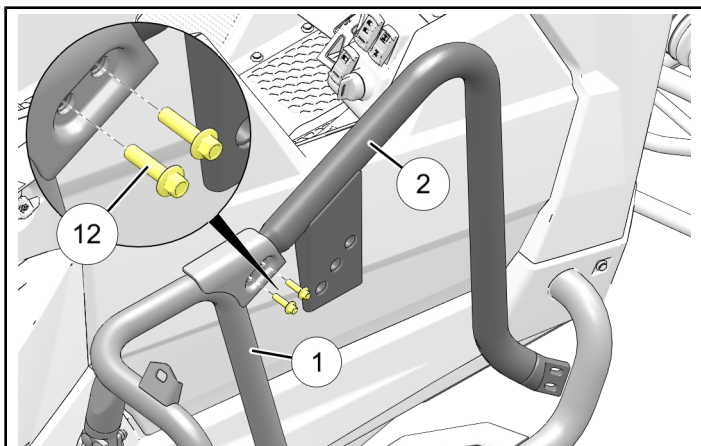
3. Nest rear frame lower fitting ① into rock slider tubing, then loosely install clamp ⑧ using two screws ⑨.



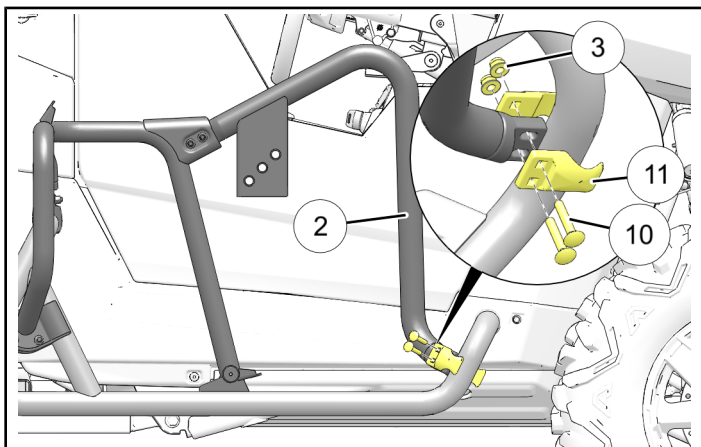
4. Loosely install rear frame upper fitting ① to rock slider tubing using two each clamps ⑪, carriage bolts ⑩, and nuts ③.



5. Loosely install front frame ② to rear frame ① using two screws ⑫.



6. Install front frame front fitting ② to rock slider tubing using two each clamps ⑪, carriage bolts ⑩, and nuts ③.

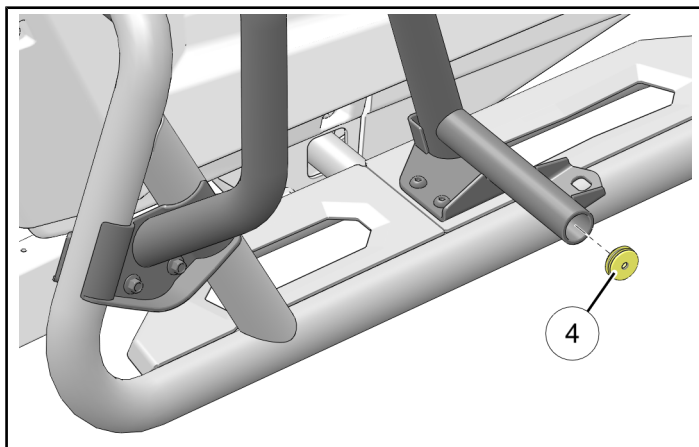


7. Torque all six nuts ③, two screws ⑨, and two screws ⑫ to specification.

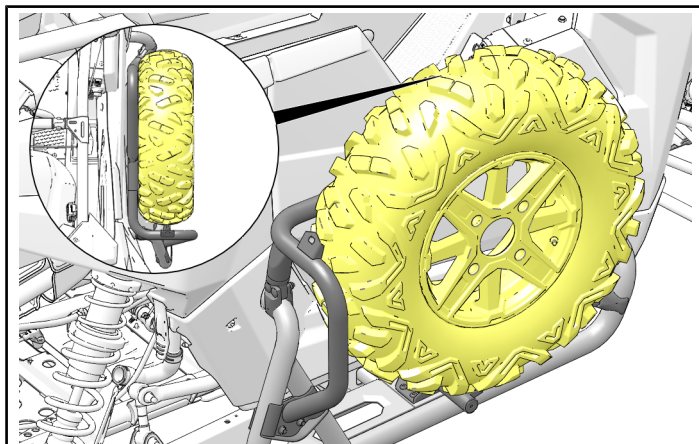
TORQUE

16 ± 2 ft. lbs. (22 ± 2 Nm)

8. Install plug ④ into rear frame tubing.



9. Remove wheel center cap, then place wheel/tire assembly into frame. Ensure tire is in firm contact with inner frame tubing.



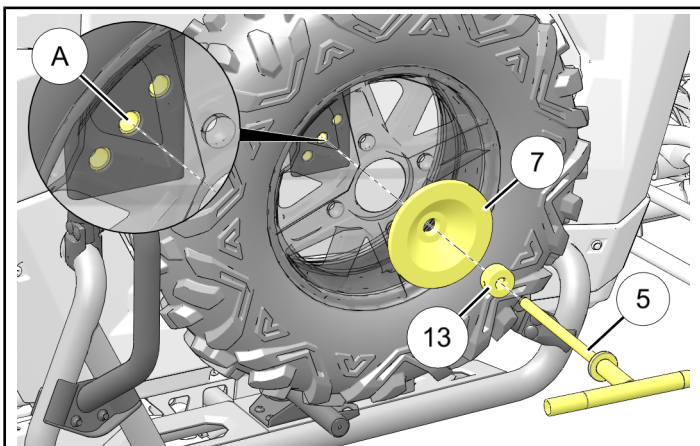
10. Thread handle ⑤ through spacer ⑬ (if needed) and wheel retainer ⑦ into suitable frame hole ①. Choose frame hole that allows weight of tire/wheel assembly to rest on frame, and retainer to nest into wheel hub.

IMPORTANT

Spacer is needed if threaded end of handle will contact exterior body panel when tightened.

NOTE

Wheel shown partially transparent for clarity.
Handle can also be used as lug nut wrench.



FEEDBACK FORM

A feedback form has been created for the installer to provide any comments, questions or concerns about the installation instructions. The form is viewable on mobile devices by scanning the QR code or by clicking [HERE](#) if viewing on a PC.

FEEDBACK FORM

