

TIP DOWN WINDSHIELD KIT



P/N 2881616

APPLICATION

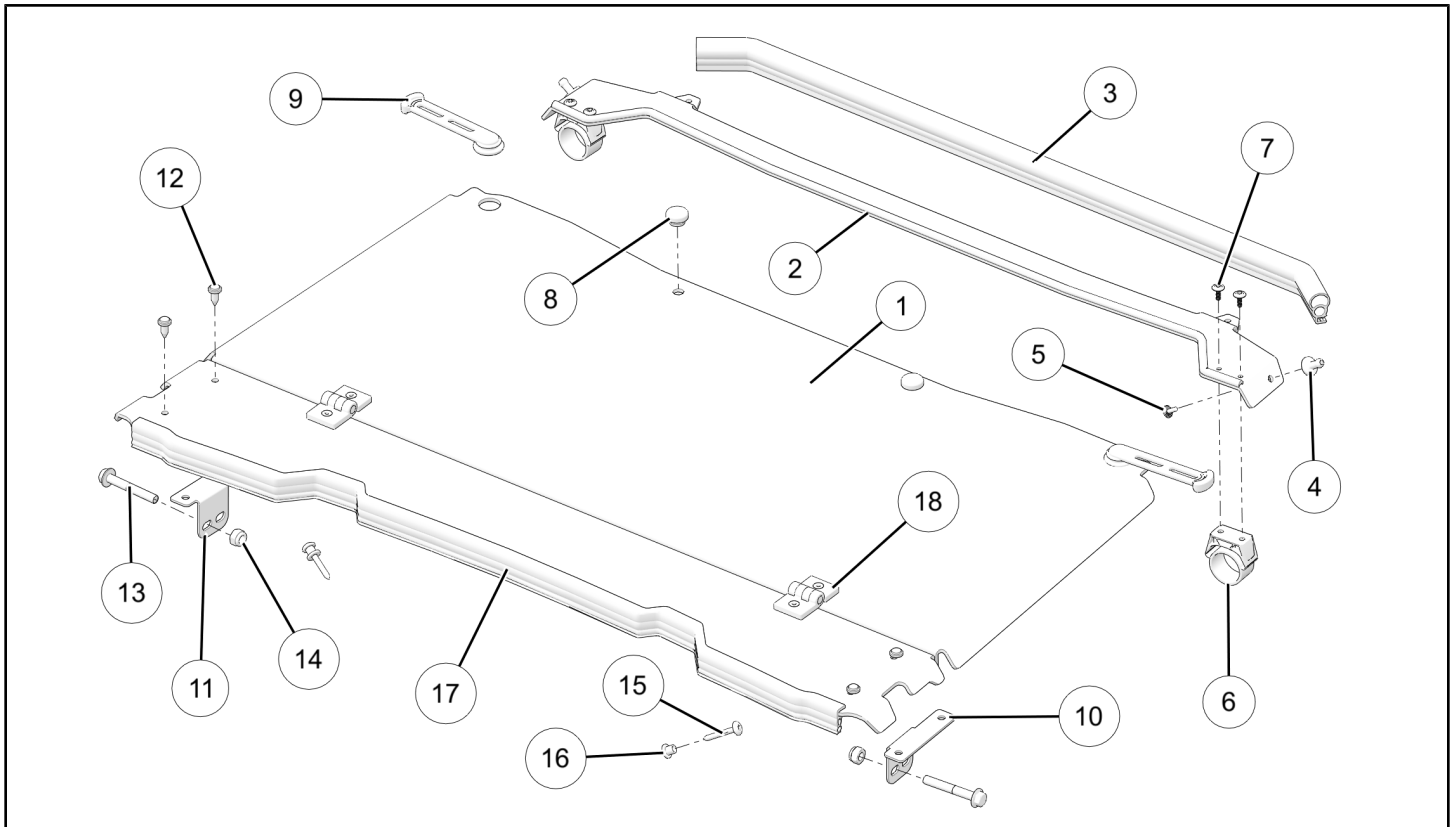
Verify accessory fitment at Polaris.com.

BEFORE YOU BEGIN

Read these instructions and check to be sure all parts and tools are accounted for. Please retain these installation instructions for future reference and parts ordering information.

KIT CONTENTS

This Kit includes:



REF	QTY	PART DESCRIPTION	PART NUMBER	INCLUDED IN SERVICE KIT
1	1	Windshield, Tip-Down	-	-
2	1	Visor, Windshield	-	-
3	1	Seal, Bulb, Visor	-	2206429
4	2	Ball Stud, Visor	-	2206430
5	2	Screw, Truss Head Torx® - #10-12 X 0.5	-	2206430
6	2	Clamp, Visor	-	2878747*
7	4	Screw, Button Head Torx® - #10-24 X 0.625	-	2878747*
8	2	Bumper	-	2206429

REF	QTY	PART DESCRIPTION	PART NUMBER	INCLUDED IN SERVICE KIT
9	2	Strap	-	2206429
10	1	Bracket, Windshield LH	-	-
11	1	Bracket, Windshield RH	-	-
12	4	Push Dart	-	2206430
13	2	Screw, Hex Flange - M10 X 1.5 X 65	-	2206430
14	2	Nut, Hex Flange - M10 X 1.5	-	2206430
15	2	Screw, Truss Head Torx® - M6 X 1.0 X 45	-	2206430
16	2	Spacer, Shoulder - M6	-	2206430
17	1	Seal, Upper Dash	-	2206429
18	2	Hinge, Butterfly (includes associated hardware)	-	2206430
	1	Instructions	9926688	-

* Service kit 2878747 contains one clamp and two screws.

TOOLS REQUIRED

- Safety Glasses
- Socket Set, Torx®
- Wrench Set, Hex, Metric
- Wrench Set, Metric
- Torque Wrench

IMPORTANT

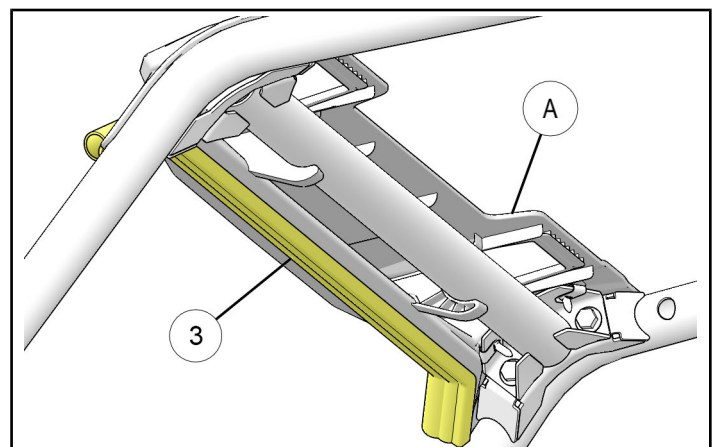
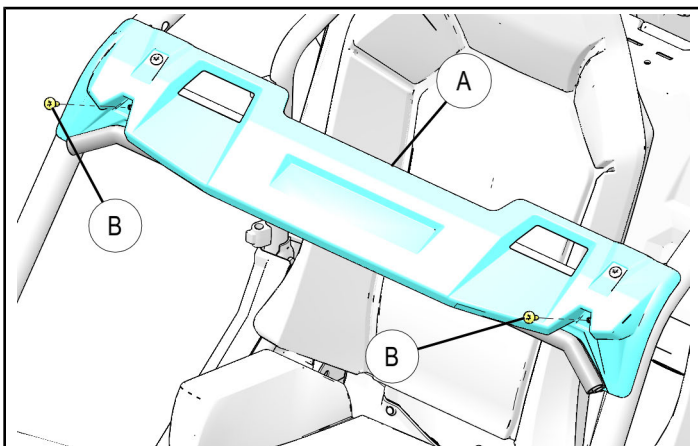
Your TIP DOWN WINDSHIELD KIT is exclusively designed for your vehicle. Please read the installation instructions thoroughly before beginning. Installation is easier if the vehicle is clean and free of debris. For your safety, and to ensure a satisfactory installation, perform all installation steps correctly in the sequence shown.

ASSEMBLY TIME

Approximately 30 minutes

INSTALLATION INSTRUCTIONS

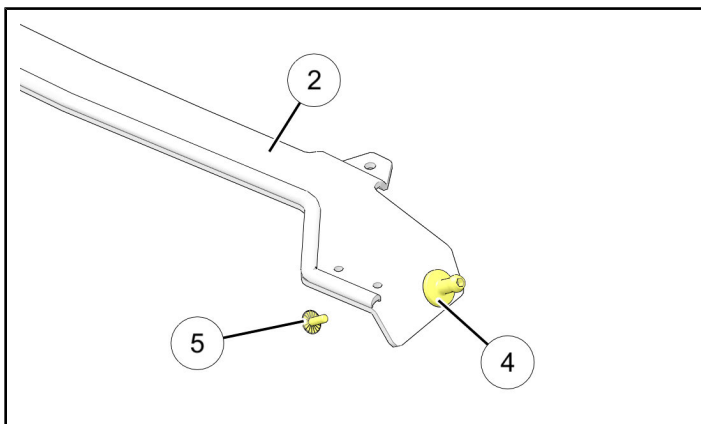
1. Shift vehicle transmission into "PARK". Turn key to "OFF" position and remove from vehicle.
2. Assemble and install windshield visor.
 - a. Remove two screws (B) from ROPS visor (A) as shown. Retain screws.
 - b. Orient seal ③ so bulb is facing forward/upward, then install to ROPS visor (A) by pushing into place as shown. Trim seal to fit (if necessary).



- c. Install ball stud ④ to windshield visor ② using screw ⑤ as shown. Torque to specification. Repeat for opposite side.

TORQUE

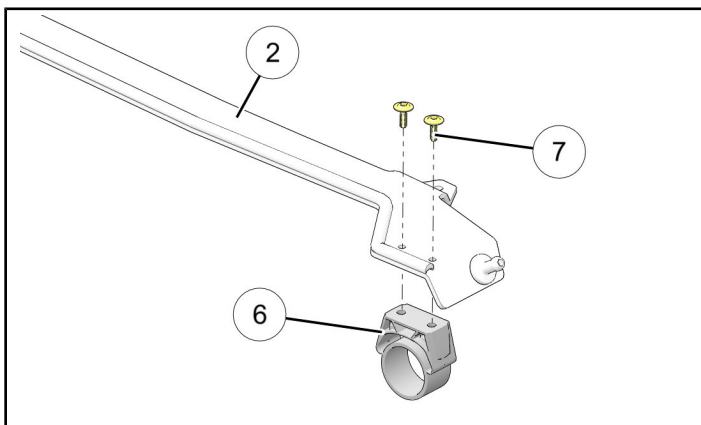
15 in. lbs. (1.7 Nm)



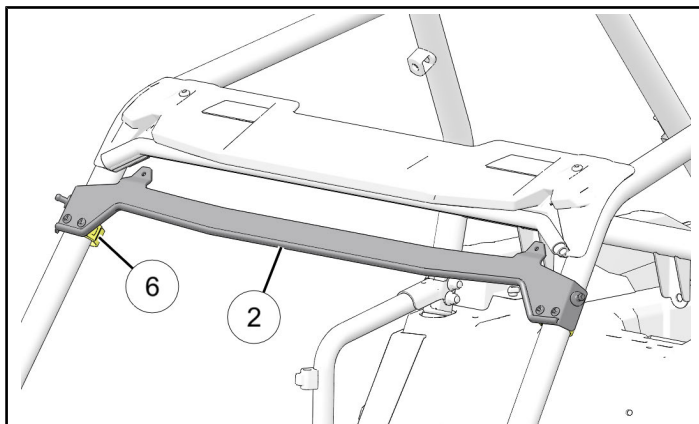
- d. Install clamp ⑥ to windshield visor ② using two screws ⑦ as shown. Ensure proper orientation: Clamp latch tab is on OUTBOARD side of visor. Torque to specification. Repeat for opposite side.

TORQUE

25 in. lbs. (2.8 Nm)



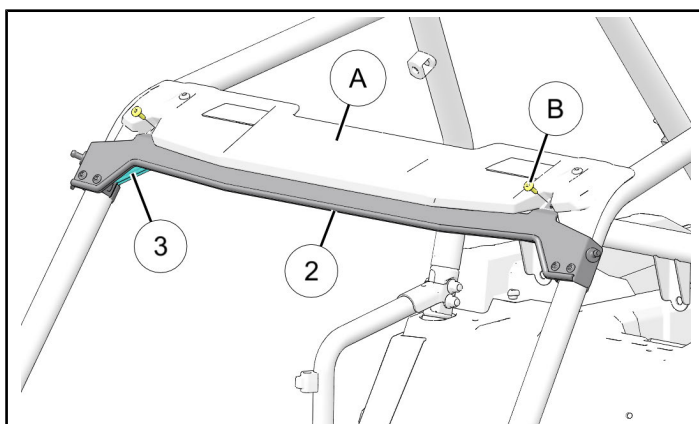
- e. Open clamps ⑥, then push windshield visor ② onto ROPS A-pillars as shown.



- f. Align fastener holes, then loosely install windshield visor ② to ROPS visor (A) using two retained screws (B) as shown.

NOTE

Windshield visor is nested between ROPS visor and seal ③.



- g. Using fingers, squeeze clamp straps together until they lock.

TIP

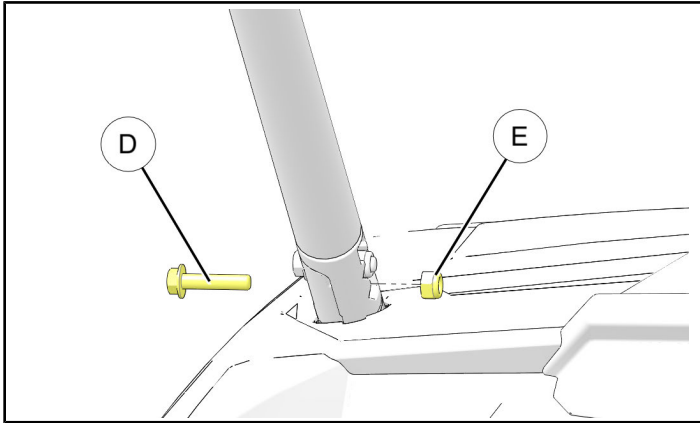
If straps do not lock together, use heel of one hand to gently strike forward side of visor (clamp screw heads) while simultaneously squeezing straps together with other hand.

- h. Torque screws (B) to specification.

TORQUE

8 ± 1 ft. lbs. (11 ± 1 Nm)

3. Prepare lower ROPS fittings for windshield installation.
 - a. Remove LOWER ROPS screw (D) and nut (E) from LH ROPS fitting as shown. Retain nut. Screw will not be reused.



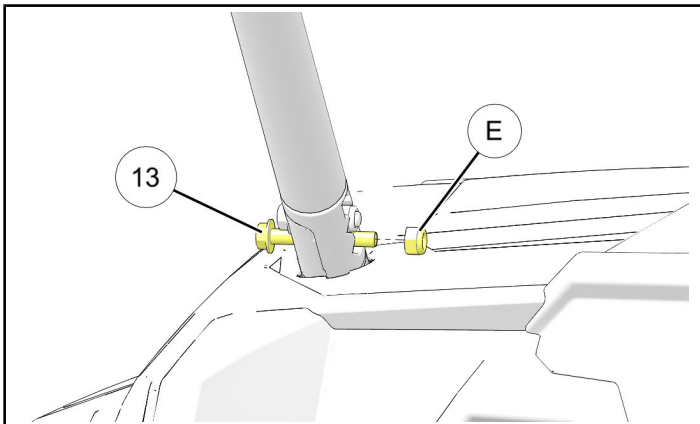
⚠ WARNING

Failure to properly torque fasteners will adversely affect ROPS integrity and may lead to personal injury or death in an accident.

- b. Install new screw (13) and retained nut (E). Torque to specification.

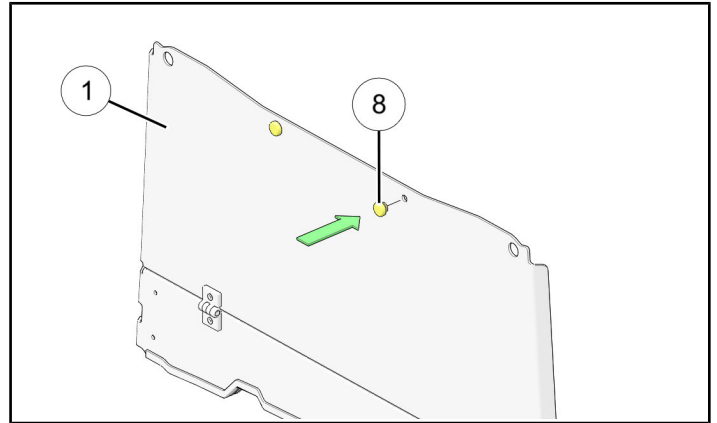
TORQUE

40 ft. lbs. (54 Nm)

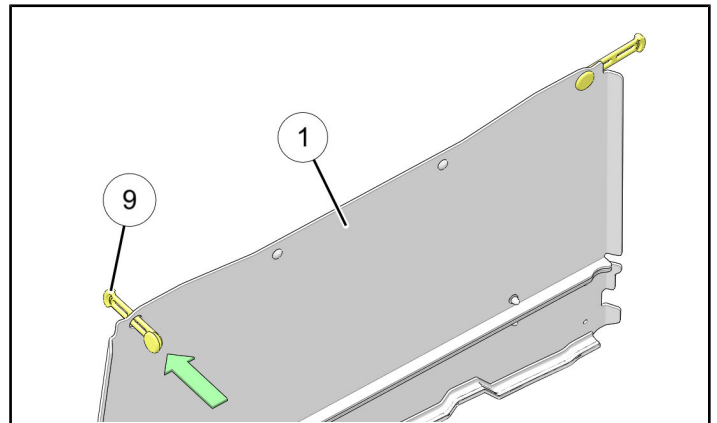


- c. Repeat Steps a. and b. for RH ROPS fitting.

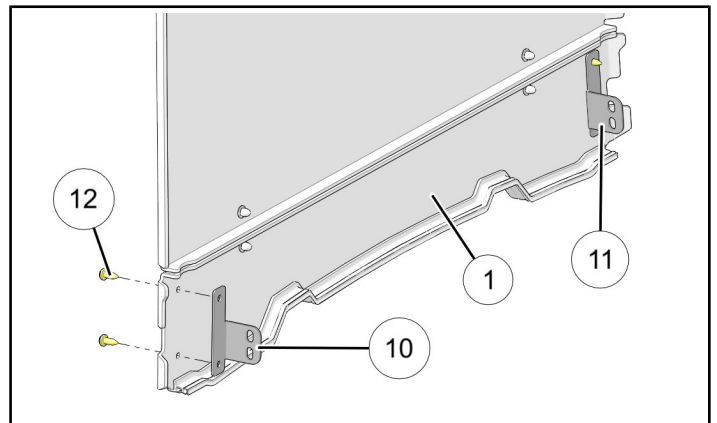
4. Assemble and install windshield.
 - a. Install two bumpers (8) to windshield (1) by pushing bumpers through FRONT side of windshield as shown.



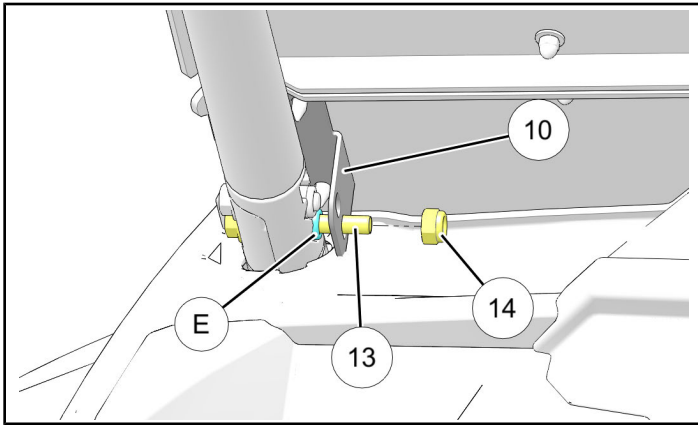
- b. Install two straps (9) to windshield (1) by pushing straps through BACK side of windshield as shown.



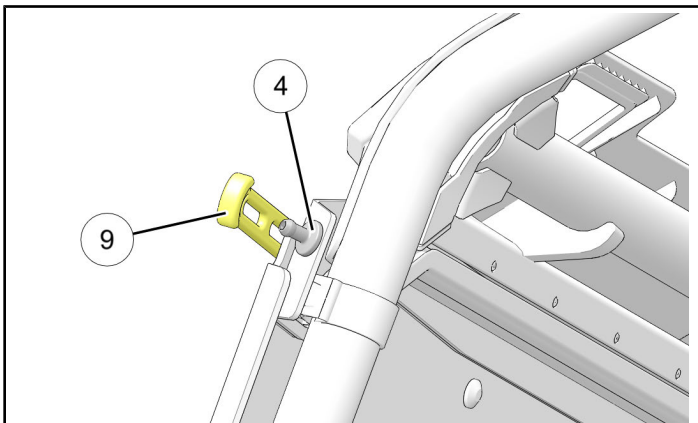
- c. Install LH bracket (10) to fixed (lower) portion of windshield (1) using two push darts (12) as shown. Repeat for RH bracket (11).



- d. Install LH bracket ⑩ over screw ⑬, then loosely secure with nut ⑭ as shown. Repeat for RH side using bracket ⑪.
- Each LOWER screw will have two nuts: retained nut (E) outboard of bracket, and additional nut ⑭ inboard of bracket.
 - Each UPPER screw is for bracket alignment only; additional nut is not used.



- e. Secure windshield in closed position by attaching two each straps ⑨ to ball studs ④ as shown.



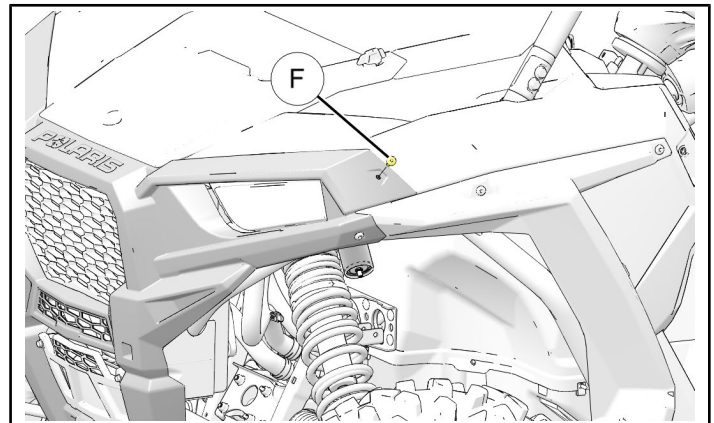
- f. Center windshield in ROPS, push fixed portion of windshield ① down against upper dash panel to compress seal, then tighten nuts ⑭. See Step 4d for illustration. Torque to specification.

TORQUE

40 ft. lbs. (54 Nm)

5. Install strap tie-down fasteners to fenders.

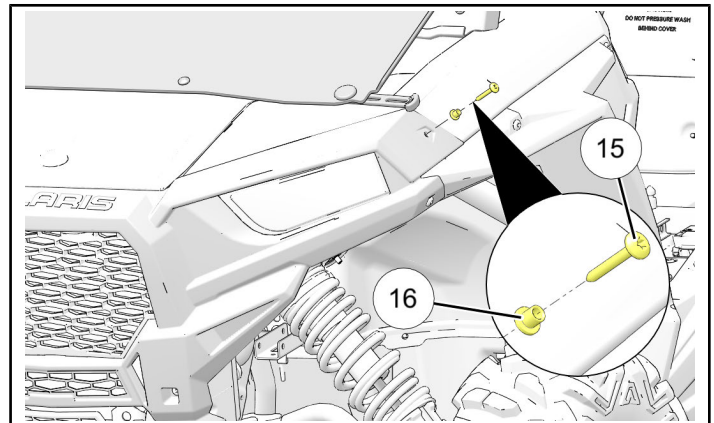
- a. Remove two existing screws (F) from LH and RH sides of front fascia as shown. Screws will not be reused.



- b. Install screw ⑮ and shoulder spacer ⑯ into front fascia as shown. Repeat for RH fender.

NOTE

Screw and spacer used to secure windshield in open position.



⚠ WARNING

When trailering vehicle with windshield installed perform the following:

- If vehicle is trailered facing FORWARD windshield must be CLOSED and secured to windshield visor.
- If vehicle is trailered facing REARWARD windshield must be OPEN and secured to fascia.

Failure to perform the above may allow airflow to separate windshield from vehicle, resulting in an accident and severe injury or death.