

# VENTED WINDSHIELD KIT



**P/N 2883112**

## APPLICATION

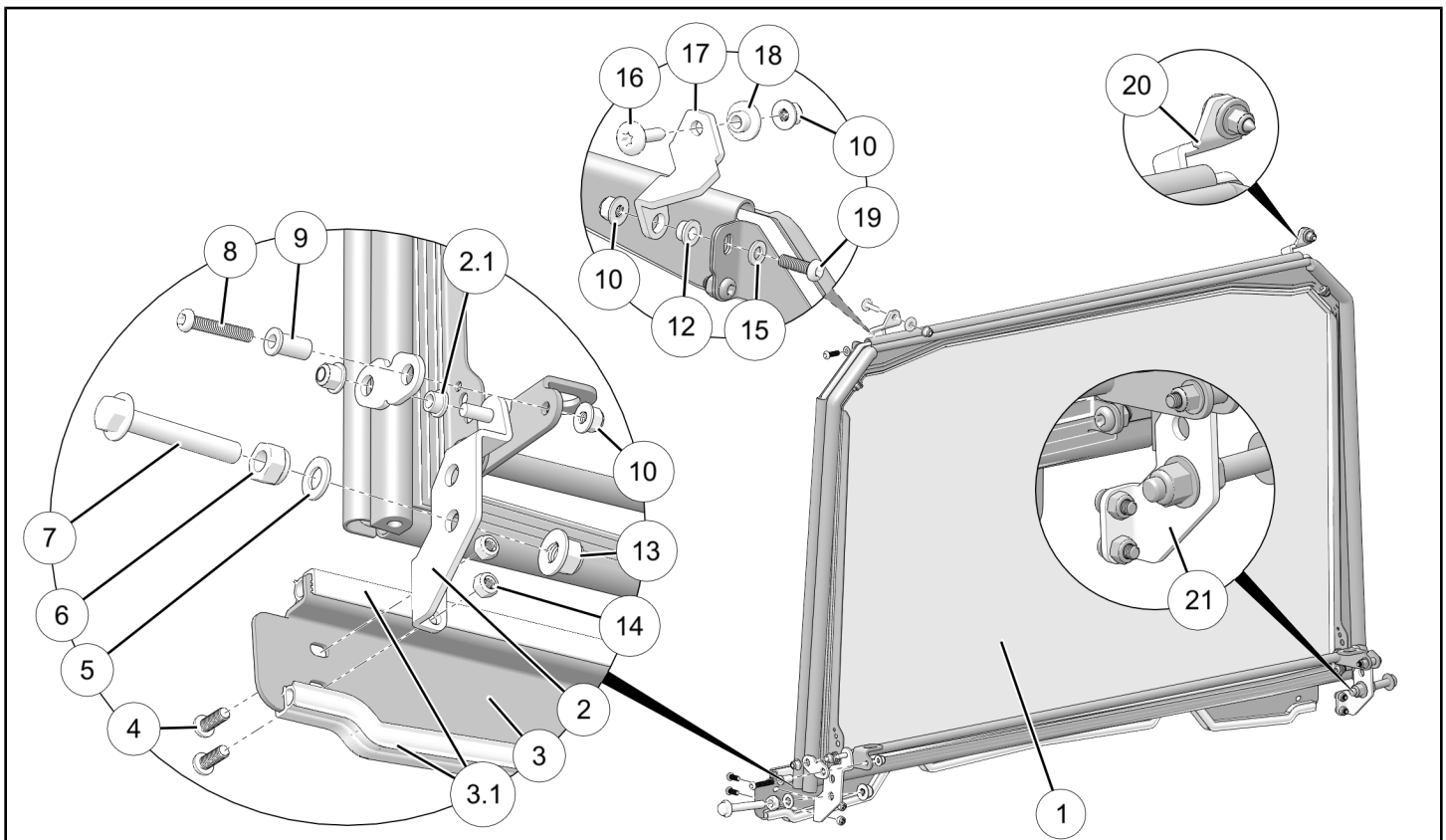
Verify accessory fitment at [Polaris.com](http://Polaris.com).

## BEFORE YOU BEGIN

Read these instructions and check to be sure all parts and tools are accounted for. Please retain these installation instructions for future reference and parts ordering information.

## KIT CONTENTS

This Kit includes:



REF	QTY	PART DESCRIPTION	PART NUMBER
1	1	Windshield	-
2	1	Bracket Assembly, ROPS, LH (includes item 2.1 below)	-
2.1*	1	. Bearing, Flange Sleeve (short)	-
3	1	Panel, Close-Off (includes item 3.1 below)	-
3.1*	-	. Seal, Close-Off Panel	-
4	4	Screw, Torx® Button Head - M6 X 1.0 X 16	-
5*	2	Washer - M10	-
6*	2	Nut, Hex, Locking - M10 X 1.5	7547746
7*	2	Screw, Hex Flange - M10 X 1.5 X 65	7519903
8	2	Screw, Torx® Button Head - M6 X 1.0 X 35	-

REF	QTY	PART DESCRIPTION	PART NUMBER
9*	2	Bearing, Flange Sleeve (long)	-
10*	6**	Nut, Hex Flange, Locking - M6 X 1.0	-
11	-	(unused)	-
12*	2	Bearing, Flange Sleeve (short)	-
13	2	Nut, Hex Flange, Locking - M10 X 1.5 (not included in some kits)	-
14	4	Nut, Hex, Locking - M6 X 1.0	-
15*	2	Washer - M6	-
16*	2	Screw, Torx® Truss Head - M6 X 1.0 X 25	7519650
17*	1	Hinge, LH	-
18*	2	Spacer, Shoulder - M6 X 0.28 inch	-
19*	2	Screw, Torx® Button Head - M6 X 1.0 X 20	-
20*	1	Hinge, RH	-
21	1	Bracket Assembly, ROPS, RH (includes item 21.1 below)	-
21.1*	1	. Bearing, Flange Sleeve (short) (not shown)	-
	1	Instructions	9928605

\* Included in Hardware Kit PN 2207623

\*\* Hardware Kit PN 2207623 contains quantity 4.

## TOOLS REQUIRED

- Safety Glasses
- Drill
- Drill Bit: 1/2 inch (13 mm)
- Screwdriver Set, Torx®
- Socket Set, Metric
- Torque Wrench
- Wrench Set, Metric

## IMPORTANT

Your Vented Windshield Kit is exclusively designed for your vehicle. Please read the installation instructions thoroughly before beginning. Installation is easier if the vehicle is clean and free of debris. For your safety, and to ensure a satisfactory installation, perform all installation steps correctly in the sequence shown.

## ASSEMBLY TIME

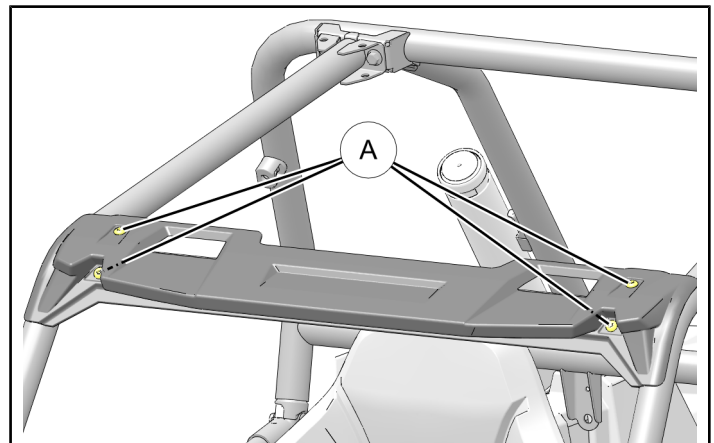
Approximately 40–60 minutes

## INSTALLATION INSTRUCTIONS

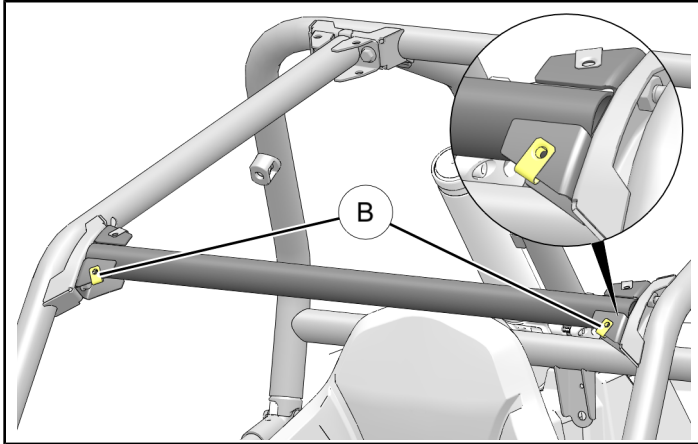
### NOTE

Polaris recommends two people assemble and install this kit.

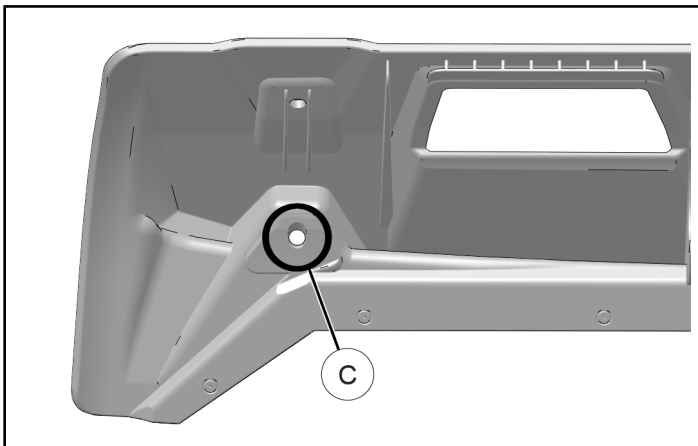
1. Shift vehicle transmission into “PARK”. Turn ignition switch to “OFF” position and remove key.
2. Remove roof (if installed).
3. Prepare ROPS visor for windshield.
  - a. Remove four screws **A** from visor, then remove visor. Retain two screws; the remaining two screws will not be reused.



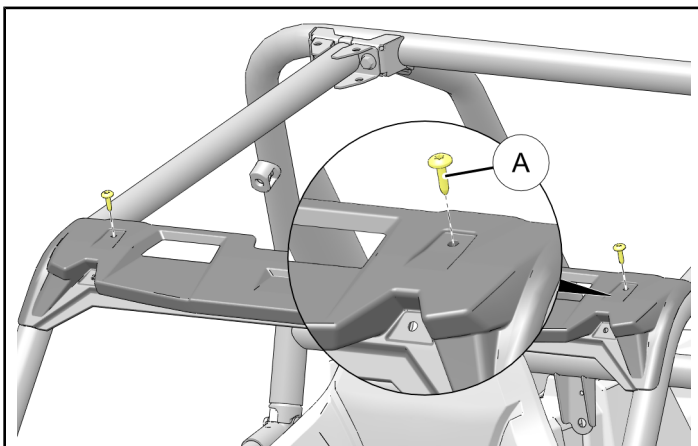
- b. Remove two clip nuts **(B)** from FRONT gussets on ROPS A-pillar cross-member. Clip nuts will not be reused.



- c. Enlarge existing FRONT hole **(C)** on LH side of visor using 1/2 inch (13 mm) drill bit. Do not enlarge existing rear hole. Repeat for RH side.



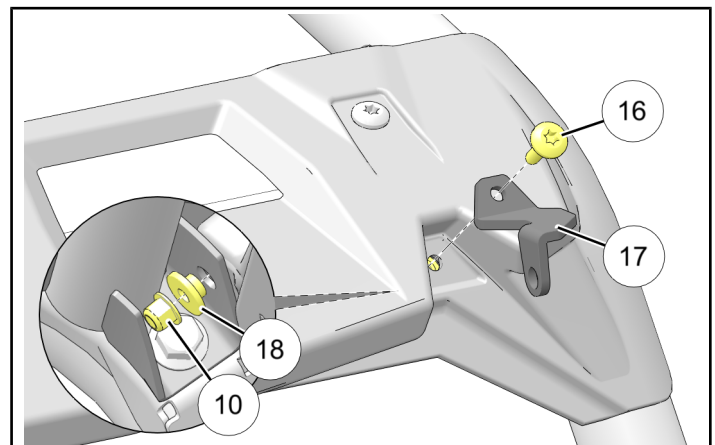
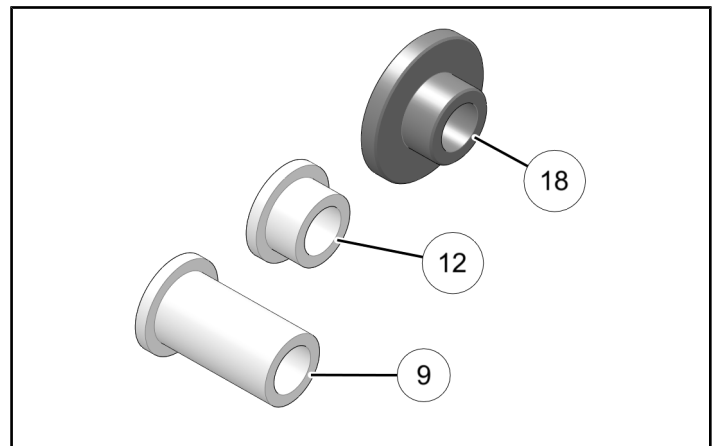
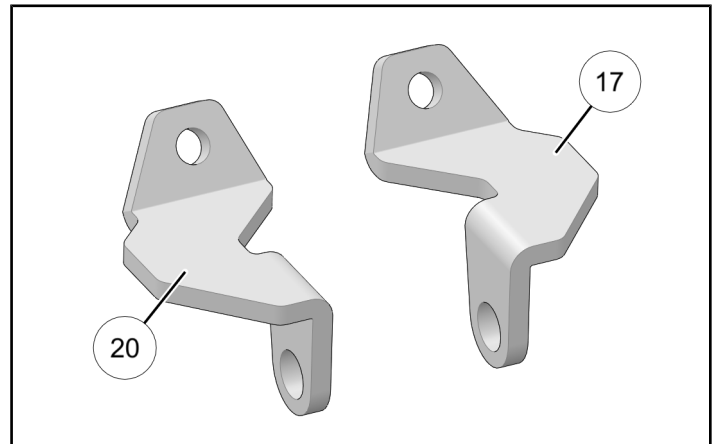
- d. Loosely reinstall visor to ROPS using two retained screws **(A)** in REAR holes.



4. Loosely install LH hinge **(17)** to LH visor FORWARD hole using screw **(16)**, shoulder spacer **(18)**, and FLANGE nut **(10)**. Do not use HEX (unflanged) nut **(14)**. Repeat for RH side using RH hinge **(20)**.

#### NOTE

Shoulder spacer **(18)** resembles short flange sleeve bearing **(12)**. However, spacer is BLACK with large shoulder; bearing is SILVER with small shoulder.



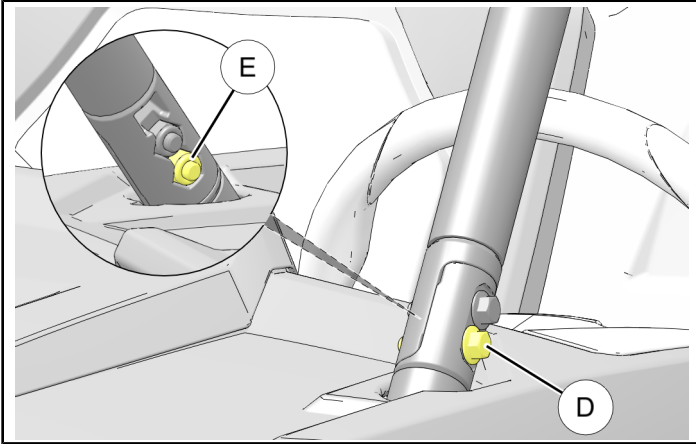
- Remove LOWER screw ① and corresponding nut ② from LH ROPS fitting. Retain nut; screw will not be reused. Repeat for RH side.

### IMPORTANT

Do NOT loosen or remove upper screw and nut from ROPS fitting.

### TIP

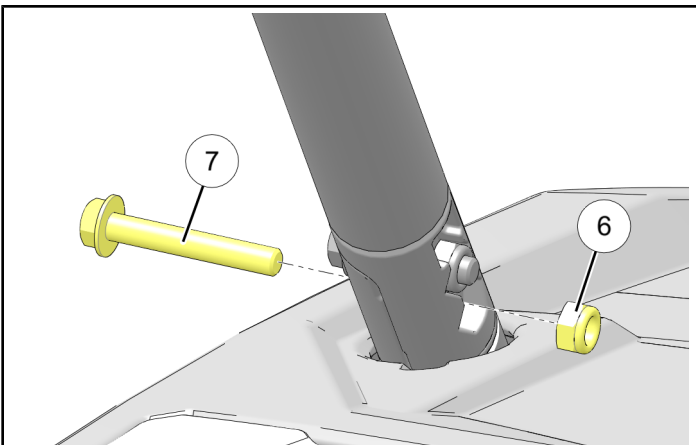
Temporarily block gap between ROPS fitting and upper dash with clean cloth or tape to prevent nut from accidentally falling behind dash.



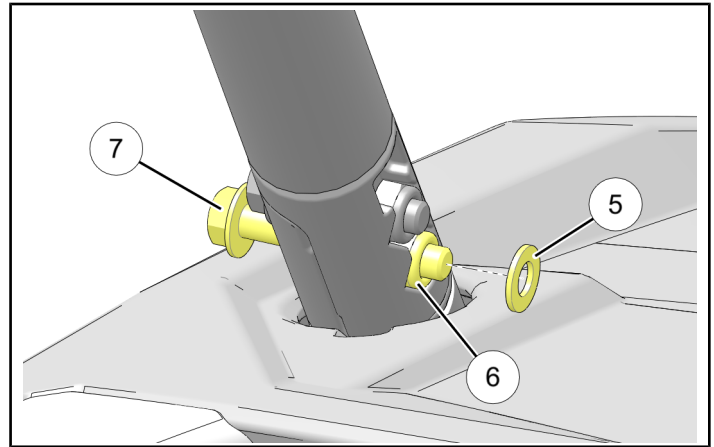
- Partially install screw ⑦ through ROPS fitting into NEW nut ⑥. Do not fully install or tighten screw at this time; screw threads should only extend approximately 1/4 inch (6 mm) beyond nut to enable later installation of ROPS brackets. Repeat for RH side.

### IMPORTANT

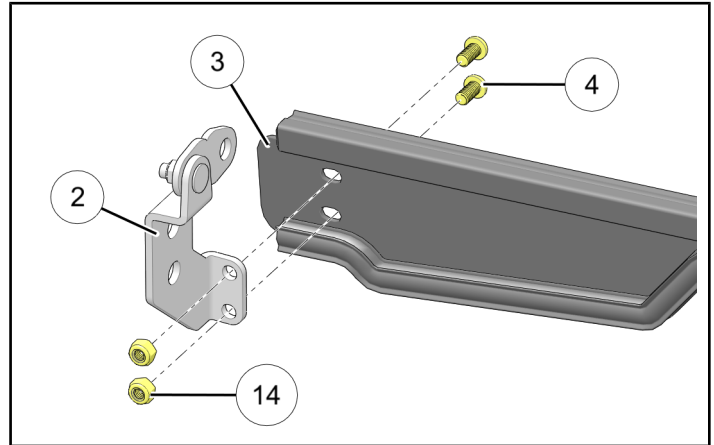
Do NOT use old nut ② in this location. ROPS integrity requires nut with UNUSED locking insert.



- Install washer ⑤ on end of screw ⑦. Repeat for RH side.



- Loosely install LH ROPS bracket assembly ② to close-off panel ③ using two each screws ④ and HEX (unflanged) nuts ⑭. Finger tighten nuts ONLY. Do not use FLANGE nuts ⑩. Repeat for RH side using RH ROPS bracket assembly ⑰.

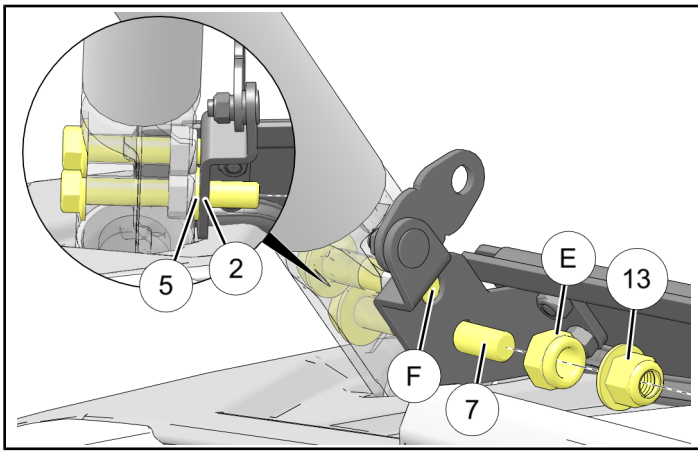


9. Install LH ROPS bracket assembly ② over previously installed washer ⑤ and ROPS fitting screws ⑥ and ⑦, then install retained (old) nut ⑤ or, if provided in kit, hex flange nut ⑬. Finger tighten ONLY. Repeat for RH side using RH ROPS bracket assembly ②.

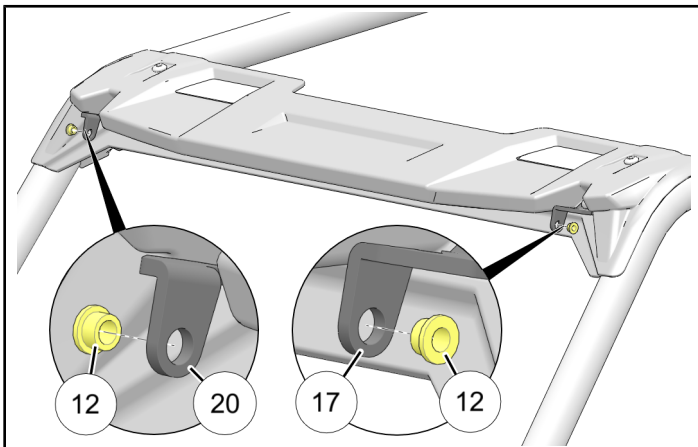
If necessary, remove or reposition washer ⑤ on LH and/or RH side to aid in alignment of close-off panel ③.

#### NOTE

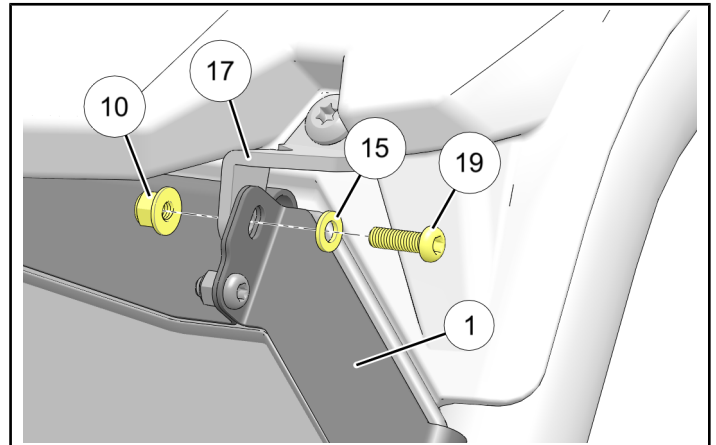
Upper screw ⑥ is only used to provide bracket orientation. No additional nut is installed. ROPS fitting shown partially transparent for clarity.



10. Install two SHORT flange sleeve bearings ⑫ into LH hinge ⑰ and RH hinge ⑳. Ensure bearing flanges are on OUTBOARD side of hinges as shown.



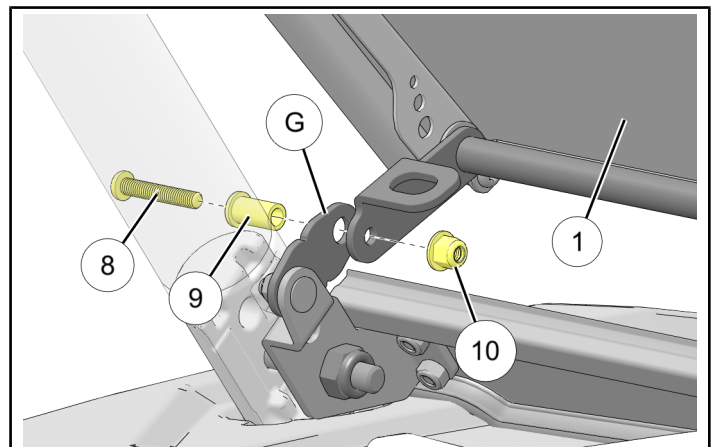
11. Loosely install LH side of windshield ① to LH hinge ⑰ using screw ⑱, washer ⑮, and nut ⑩. Ensure sleeve bearing ⑫, installed in previous step, remains in place. Repeat for RH side using RH hinge ⑳.



12. With windshield partially open, loosely assemble link ⑥ on LH ROPS bracket assembly to windshield ① using screw ⑧, LONG flange sleeve bearing ⑨, and FLANGE nut ⑩. Tighten nut. Repeat for RH side.

#### NOTE

ROPS shown transparent for clarity.



13. Close windshield, then adjust as required to center in ROPS.

**⚠ WARNING**

Failure to torque fasteners as directed will adversely affect ROPS integrity and may lead to severe injury or death in an accident.

14. Ensure nut ⑤ (or nut ⑬, if installed) is only finger tight (see Step 9), then torque lower ROPS screw ⑦ to specification on both LH and RH sides.

**TORQUE**

40 ft. lbs. (54 Nm) ± 10%

15. Verify windshield is still centered, then tighten the following:
- a. Two rear visor screws ① (see Step 3)
  - b. Two hinge-to-visor screws ⑩ (see Step 4)
  - c. Four close-off panel screws ④ (see Step 8)
  - d. Two retained nuts ⑤ or, if provided in kit, hex flange nuts ⑬ (see Step 9)
  - e. Two hinge-to-windshield screws ⑨ (see Step 11)
16. Reinstall roof (if removed).

**⚠ WARNING**

If transporting vehicle in non-enclosed trailer then vehicle must FACE FORWARD, and windshield must be CLOSED and LOCKED. Otherwise, windshield must be removed.

Failure to comply may allow airflow, vibration, or other factors to separate windshield from vehicle and cause an accident, resulting in serious personal injury or death.

**FEEDBACK FORM**

A feedback form has been created for the installer to provide any comments, questions or concerns about the installation instructions. The form is viewable on mobile devices by scanning the QR code or by clicking [HERE](#) if viewing on a PC.

**FEEDBACK FORM**

