

TRAILING ARM GUARD KIT



P/N 2879496

APPLICATION

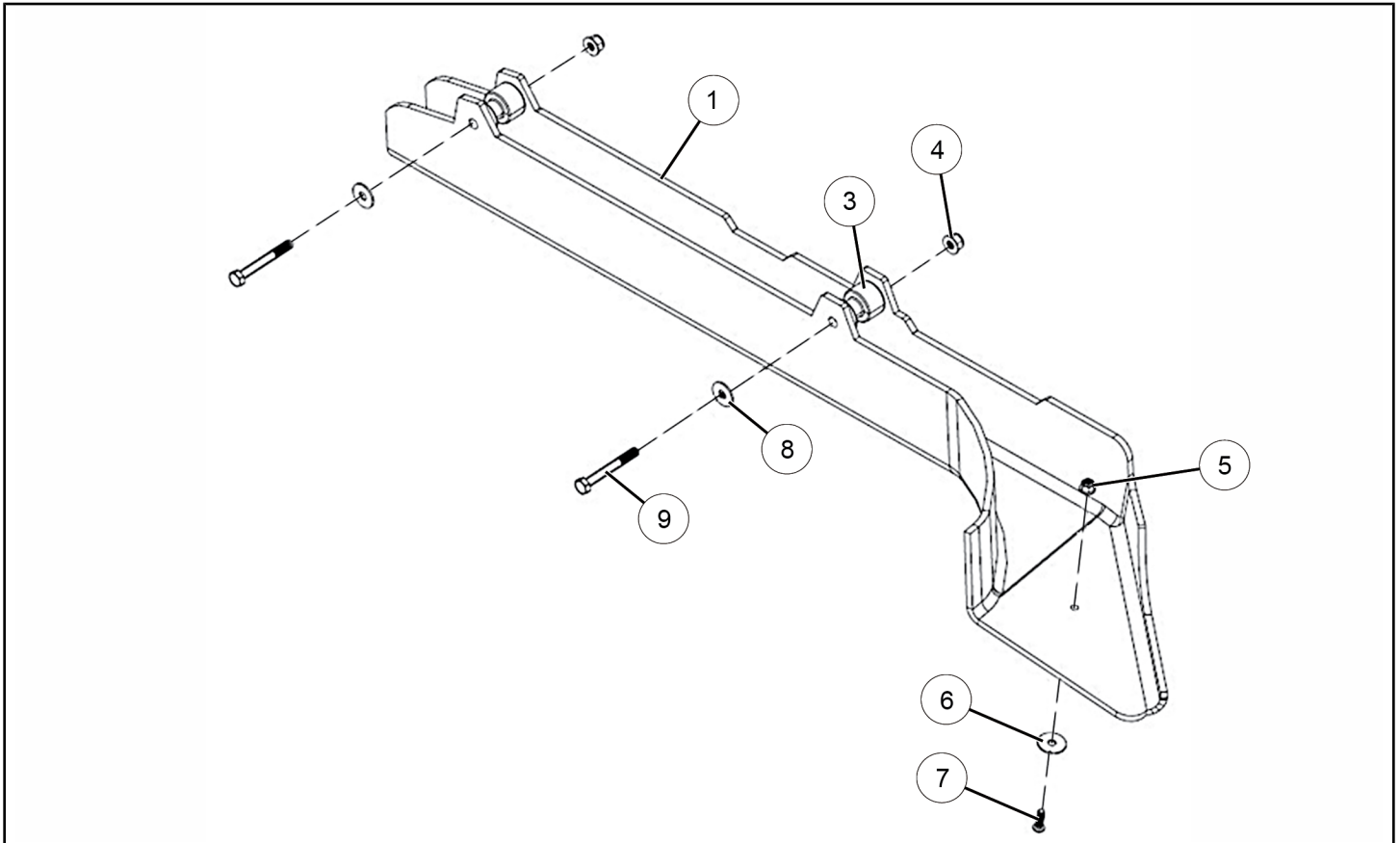
Verify accessory fitment at Polaris.com.

BEFORE YOU BEGIN

Read these instructions and check to be sure all parts and tools are accounted for. Please retain these installation instructions for future reference and parts ordering information.

KIT CONTENTS

This Kit includes:



REF	QTY	PART DESCRIPTION	PART NUMBER
1	1	Guard, Trailing Arm, LH	-
2	1	Guard, Trailing Arm, RH (not shown)	-
3*	4	Spacer, Brake Line	-
4*	4	Nut, Hex Flange, Locking - M8 X 1.25	-
5*	2	Nut, Hex Flange, Locking - M6 X 1.0	-
6*	2	Washer, Fender - M6	-
7*	2	Screw, Hex Socket Button Head - M6 X 1.0 X 20	-
8*	4	Washer, Fender - M8	-

REF	QTY	PART DESCRIPTION	PART NUMBER
9*	4	Screw, Hex - M8 X 1.25 X 65	-
10*	-	Tape, Foam - 1/8 in X 1 in X 2.0 ft	-
	1	Instructions	9924563

Items marked (*) are included in Hardware Kit PN 2205185.

TOOLS REQUIRED

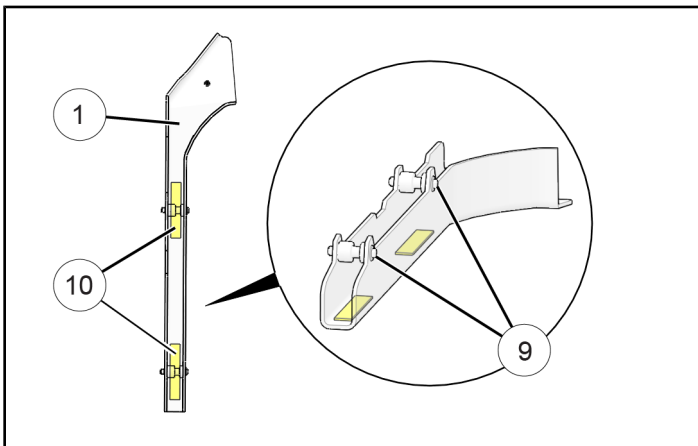
- Safety Glasses
- Hex Key Set, Metric
- Scissors
- Socket Set, Metric
- Torque Wrench
- Wrench Set, Metric

IMPORTANT

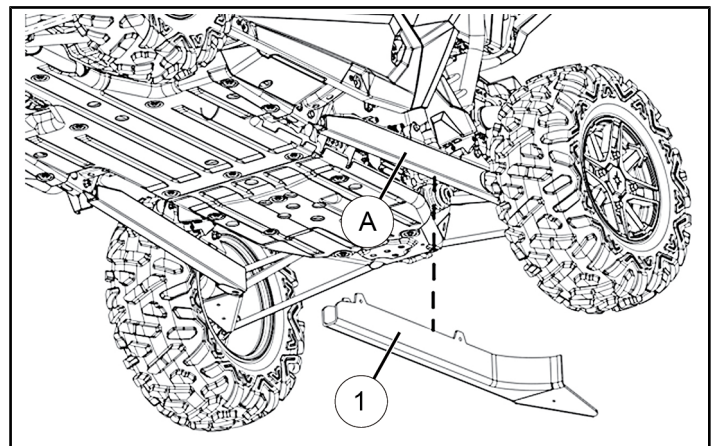
Your Trailing Arm Guard Kit is exclusively designed for your vehicle. Please read the installation instructions thoroughly before beginning. Installation is easier if the vehicle is clean and free of debris. For your safety, and to ensure a satisfactory installation, perform all installation steps correctly in the sequence shown.

INSTALLATION INSTRUCTIONS

1. Shift vehicle transmission into "PARK". Turn ignition switch to "OFF" position and remove key.
2. Install foam tape.
 - a. Cut tape ⑩ into four equal lengths (each approximately 6 inches/300 mm long).
 - b. Peel adhesive backing from tape segments, then apply to lower interior surface of LH guard ①, below holes for M8 screws ⑨. Press tape firmly into place.
3. Lift LH guard ① up and over vehicle trailing arm ①.



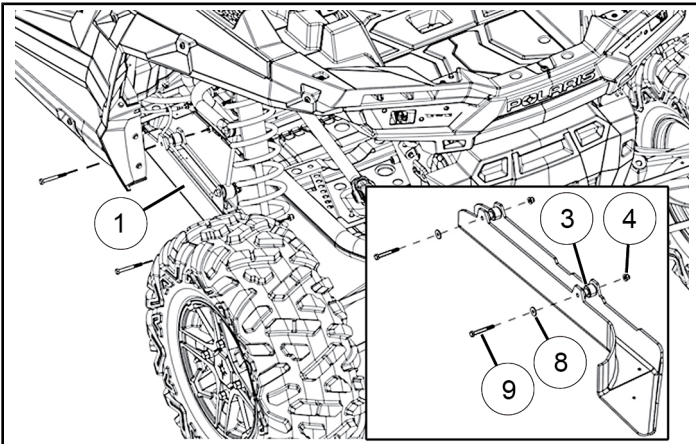
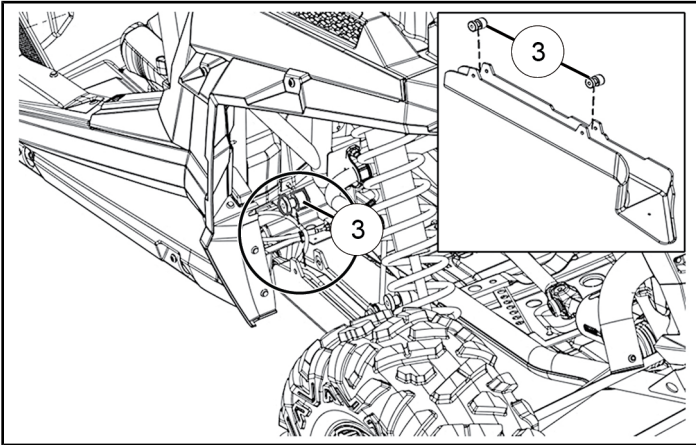
- c. Repeat for RH guard ②.



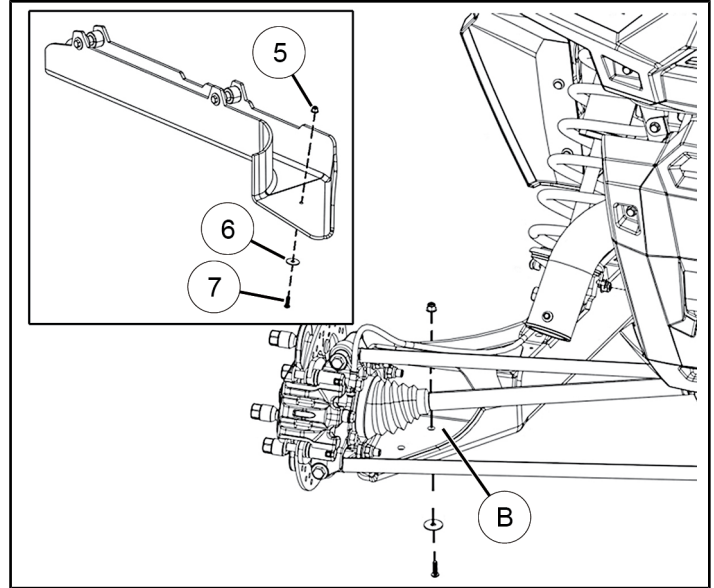
- Loosely install LH guard ① to vehicle trailing arm using two each screws ⑨, washers ⑧, brake line spacers ③, and nuts ④.

Ensure the following:

- Brake line spacers are oriented to accommodate brake line location; brake line must nest within spacer cutout
- Screw heads are on outside of guard, nuts are on inside



- Loosely install rear end of LH guard ① to trailing arm bearing carrier ⑧ using screw ⑦, washer ⑥, and nut ⑤.



- Examine installation, ensuring brake line is properly nested within spacers and is not rubbing on guard. Adjust as required.
- Torque all screws to specification.

TORQUE

M6 screws ⑦: 6 ft. lbs. (8 Nm) ± 10%
M8 screws ⑨: 10 ft. lbs. (14 Nm) ± 10%

- Repeat Steps 3–7 for opposite side using RH guard ②.

FEEDBACK FORM

A feedback form has been created for the installer to provide any comments, questions or concerns about the installation instructions. The form is viewable on mobile devices by scanning the QR code or by clicking [HERE](#) if viewing on a PC.

