

# PLOW MOUNT GLACIER PRO KIT

**POLARIS**

ENGINEERED PARTS  
ACCESSORIES & APPAREL

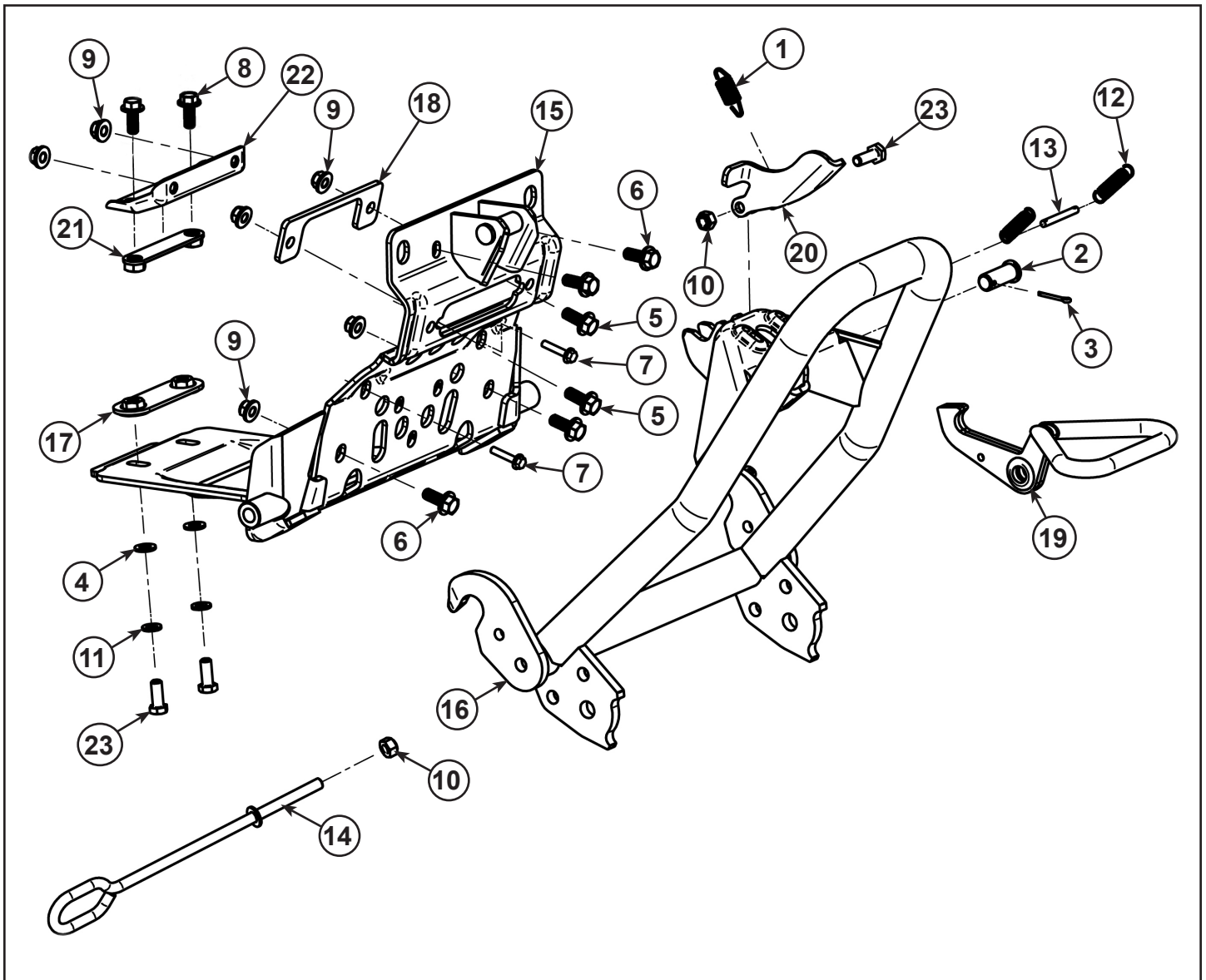
P/N 2880262

## APPLICATION

FOR USE WITH THE GLACIER PRO MID-SIZE PLOW SYSTEM (P/N 2880260) ON 2015 AND NEWER RZR 900 MODELS

## BEFORE YOU BEGIN

Read these instructions thoroughly and make sure all parts and tools are accounted for. Please retain these installation instructions for future reference and parts ordering information.



Spare Kits						
Ref	Description	Plow Mount Kit (2880262)	Hardware Mounting Kit (2205531)	Winch Link Kit (2205057)	Mounting Plate (2205532)	Mid Mount Kit (2205533)
1	Tension Spring	1x	1x			
2	Clevis Pin-16mm X 40mm	1x	1x			
3	Cotter Pin-3 X 25mm	1x	1x			
4	Flat Washer-M10 I.D. 10.5 X O.D. 20 X 2 TH.	1x	1x			
5	Hexagonal Flange M10 Bolt-1.5 X 30	2x	2x			
6	Hexagonal Flange M10 Bolt-1.5 X 25	4x	4x			
7	Hexagonal Flange M6 Bolt-1.0 X 30mm	2x	2x			
8	Hexagonal Flange M10 Bolt-1.5 X 25mm	2x				
9	Hexagonal Flange Nylon M10 Nut, 1.5	6x	6x			
10	Hexagonal Nylon M10 Nut, 1.5	1x	1x	1x		
11	M10 Lock Washer-ID 10.2 X OD 18.1 X 2.2	2x	2x			
12	Tension Spring	2x	2x			
13	Pin	1x	1x			
14	Mid Size Winch Link	1x		1x		
15	Mount Plate	1x			1x	
16	Hook Up	1x				1x
17	Tightening Plate Assembly	1x	1x			
18	Fairlead Adapter Plate	1x	1x			
19	Lock	1x	1x			
20	Kickstand Lever	1x	1x			
21	Upper Spacer Plate	1x	1x			
22	Bumper Bracket Support, Upper	1x	1x			
23	Hexagonal Bolt -M10-1.5 X 30	3x	3x			
	Instructions (P/N 9925215)	1x				

## TOOLS NEEDED

3/8" Wrench and Socket 10mm, 15mm, 17mm and 19mm Sockets and Wrenches  
Torque Wrench T40 Torx

## APPROXIMATE ASSEMBLY TIME

45 mins.

## IMPORTANT

Your Polaris PLOW MOUNT GLACIER PRO KIT is exclusively designed for your vehicle. Please read the installation instructions thoroughly before beginning. Installation is easier if the vehicle is clean and free of debris. For your safety, and to ensure a satisfactory installation, perform all installation steps correctly in the sequence shown.

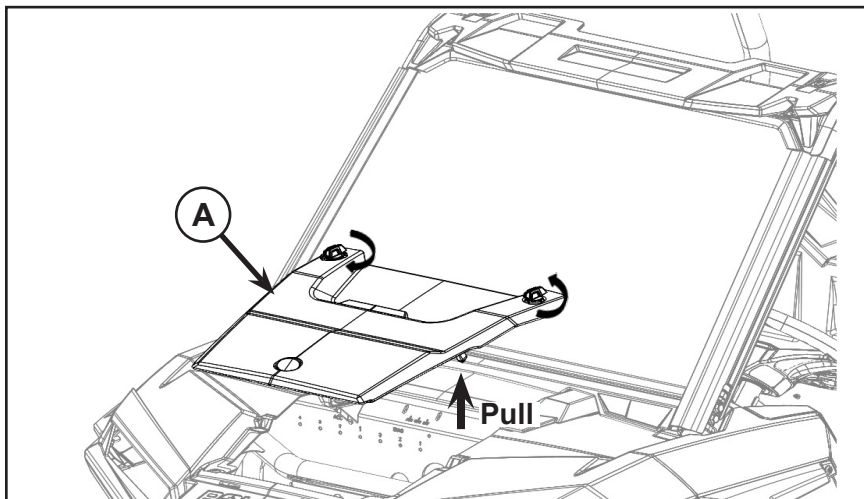
## INSTALLATION INSTRUCTIONS

**IMPORTANT:** The use of a Pro HD 4500 lb. winch or a Polaris winch with the combination of a Pro HD auto-stop and synthetic winch rope are recommended for use with this plow system to prevent premature failure of the winch cable. The winch should be installed on the unit prior to installing this kit.

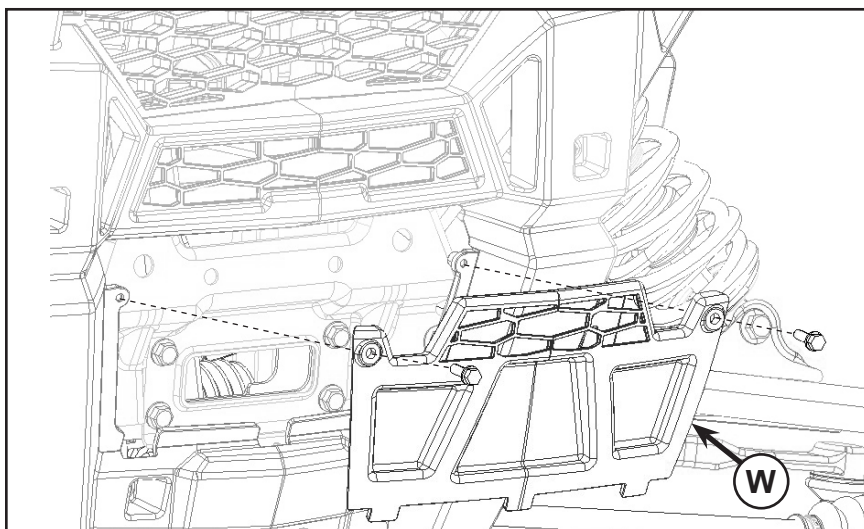
**NOTE:** The winch mount plate will replace the fairlead support plate. Please skip the fairlead installation and reference the below instructions to complete the installation.

### FRONT FASCIA REMOVAL:

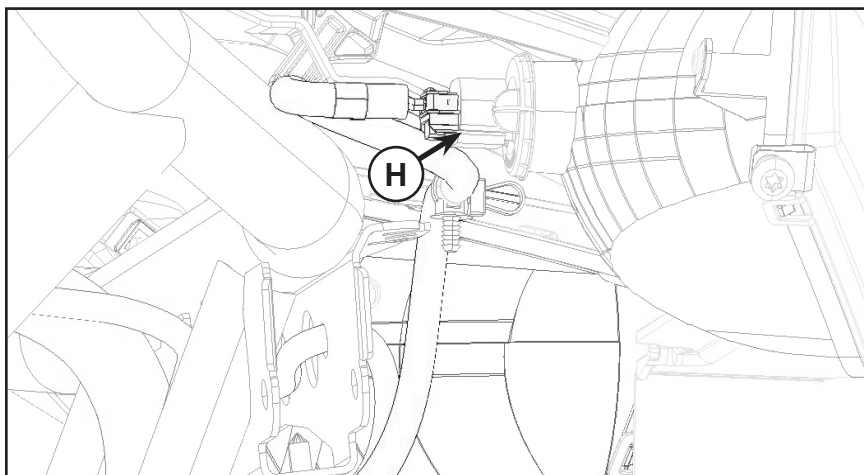
1. Release the 1/4 turn fasteners and remove the center hood (A) by pull up on the rear of the hood to disengage the fasteners and forward to release the front locking tabs. See figure.



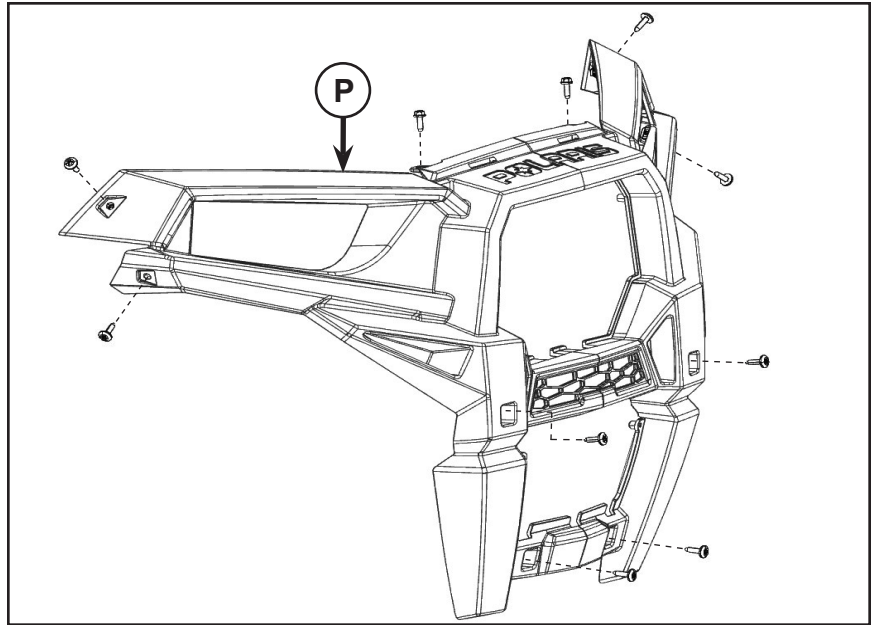
2. Remove winch cover (W). See figure.



3. Disconnect headlight connector (H) from the left and right lights. Take care to push in the release tab when disconnecting the light to avoid damaging the connector as shown in figure.



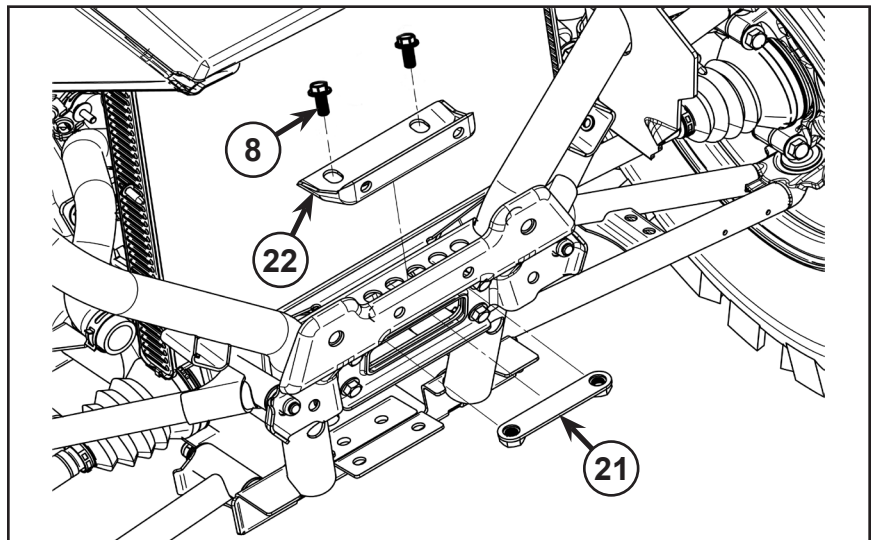
- Remove all fasteners securing front fascia (P) to vehicle as shown in the figure.



### INSTALLATION INSTRUCTIONS:

**NOTE:** If a winch was previously installed, you must first remove the fairlead support plate prior to installing mount plate kit. This mountplate kit will replace the fairlead mounting plate.

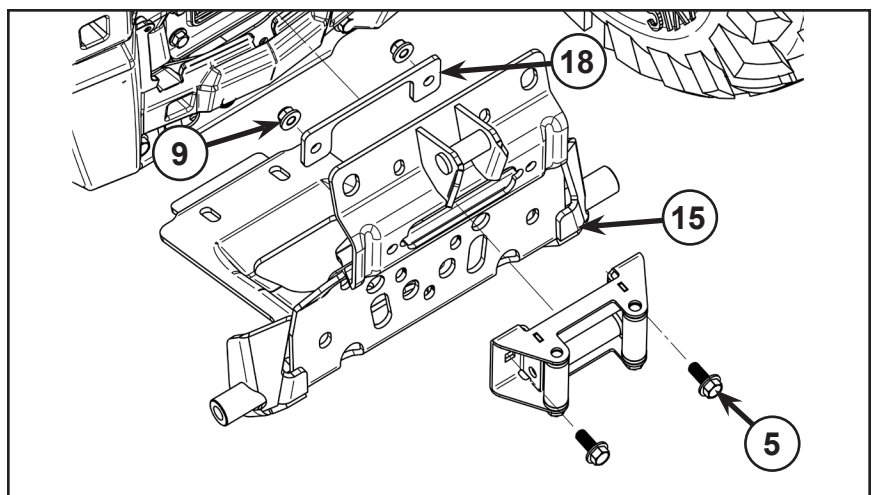
- Fasten the lower part of the bumper support bracket (22) to frame using the two M10-1.5 X 25 mm hex flange bolts (8) and the upper part of the spacer plate (21) (finger tighten at this time).



- Fairlead Installation: Follow Step A if installing a 3500 lb. winch or Step B if installing a 4500 lb. winch.

- Fasten the fairlead adapter plate (18) to rear of mount plate (15) using the two M10-1.5 X 30 mm hex flange bolts (5), two M10 1.5 flange nylon nuts (9) and with the winch 3500 lbs fairlead. Torque to 40 ft. lbs. (54 Nm).

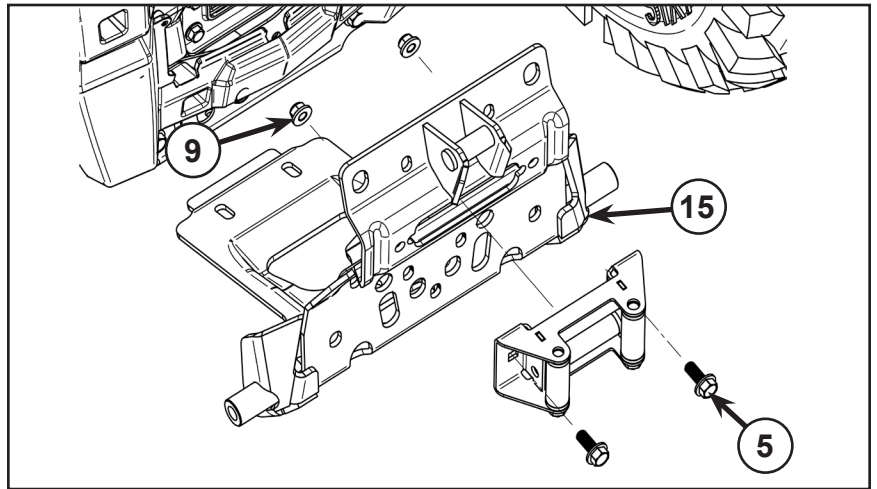
**NOTE:** Be sure to use the correct mounting holes.



- B. Fasten the winch 4500 lbs fairlead to front of mount plate (15) using the two M10-1.5 X 30 mm hex flange bolts (5), two M10-1.5 flange nylon nuts (9). Torque to 40 ft. lbs. (54 Nm).

**NOTE:** Be sure to use the correct mounting holes.

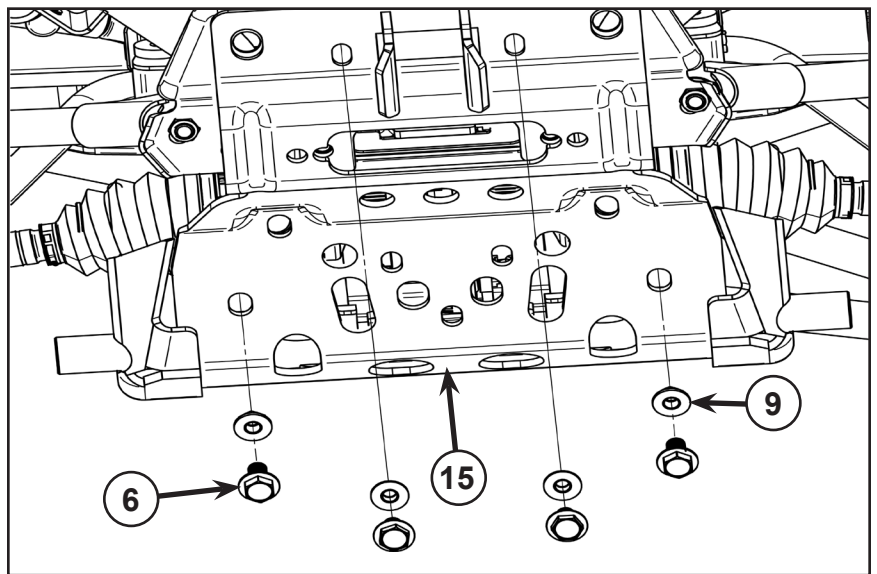
**NOTE:** The fairlead adapter plate (18) is not required when using the 4500 winch kit.



3. Feed the winch rope or cable through the fairlead prior to installation of the mount plate. Leave slack in the rope or cable so the mount plate can be easily moved into position. Install the winch hook to keep the rope or cable in place.

4. Fasten the mount plate (15) to frame using four M10-1.5 X 25 mm hex flange bolts (6) and four M10-1.5 nylon nuts (9) and the upper part of the spacer plate (21). Bolts should be finger tight at this time.

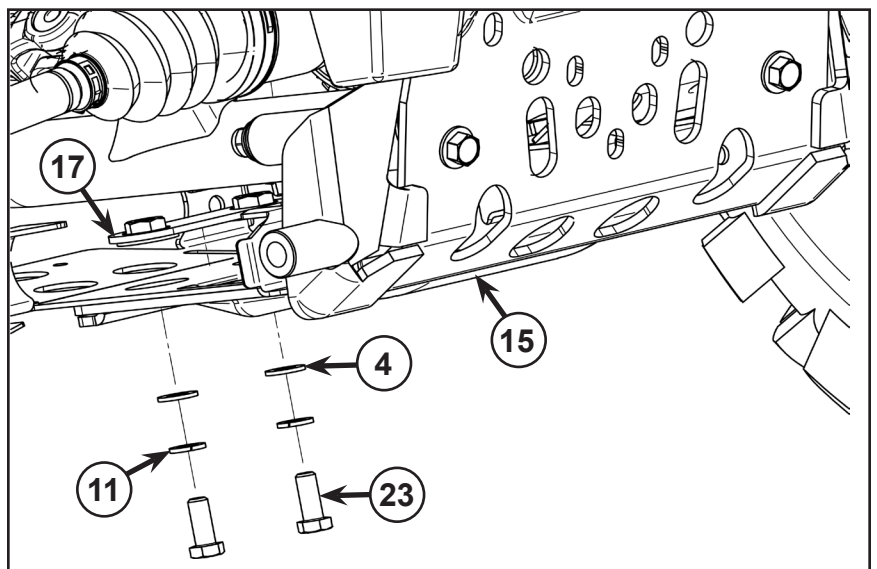
**NOTE:** Be sure to use the correct mounting holes.



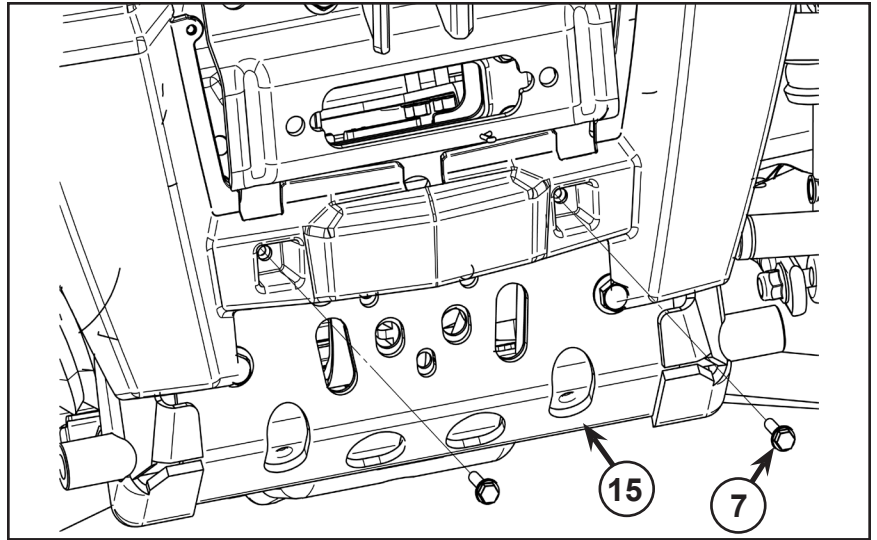
5. Fasten the rear part of the mount plate (15) to frame using the two M10-1.5 X 30 mm hex bolts (23), two M10 lock washers (11), two M10 flat washers (4) and the tightening plate (17). Tighten all bolts and nuts at this time. Torque to 40 ft. lbs. (54 Nm).

**NOTE:** Be sure to use the correct mounting holes.

6. Reinstall the front fascia that was removed in Step 3 of front fascia removal process.



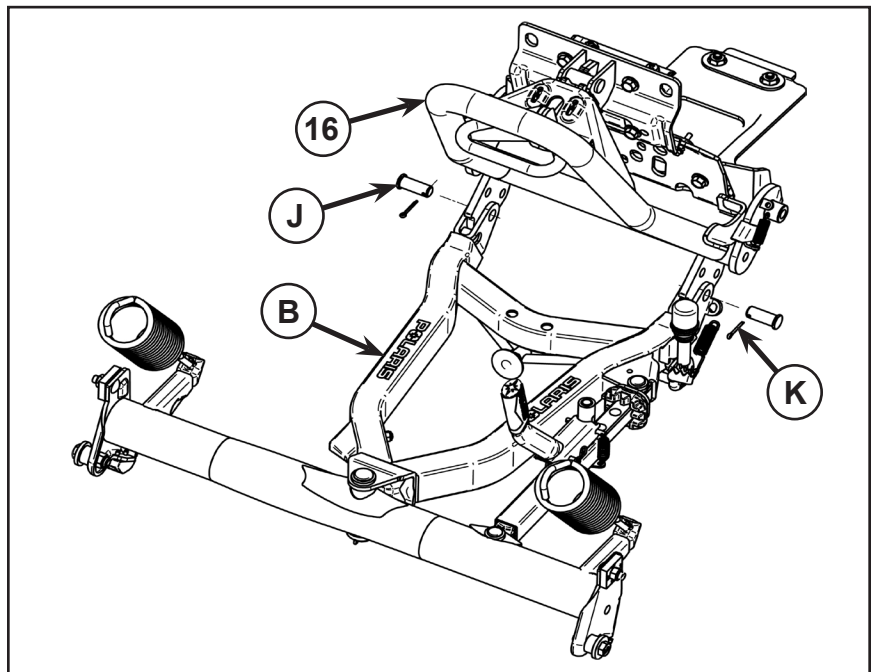
**NOTE:** M6-1.0 x 30mm hex flange bolts have been provided with this kit and should replace the two lower fascia bolts to account for the extra thickness added by the mount plate. See figure for proper bolt placement.



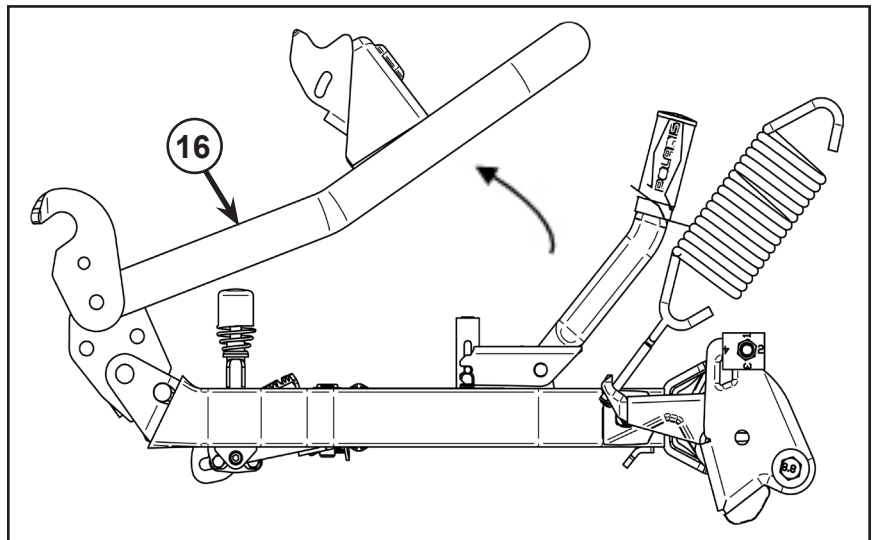
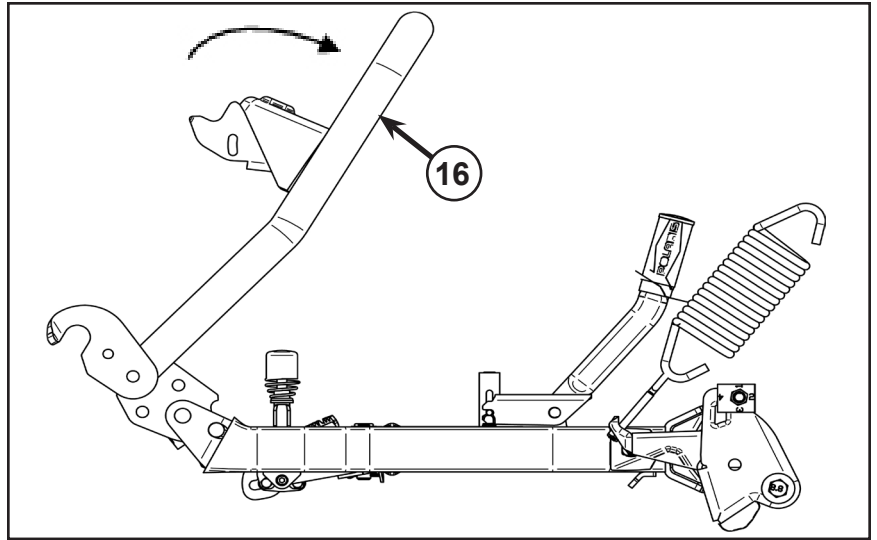
7. Reconnect the left and right headlights.
8. Reinstall the hood that was removed in Step 1 of front fascia removal process and secure it in place using the 1/4 turn fasteners.

**HOOK UP ASSEMBLY:**

9. Position the hook up (16) and insert the two hook up pins (J) into the mounting holes of the pushframe (B) and through the hook up mounting holes.
10. Insert the two 3 mm dia.X25 mm cotter pins (K) and fold the ends so they cannot be removed.



**NOTE:** Make sure the hook up (16) can move as shown in the picture. If this is not the case, remove the clevis pins (2) and reposition the handle so that the stoppers allow the part to move in the right angle.



## PUSHFRAME INSTALLATION AND REMOVAL:

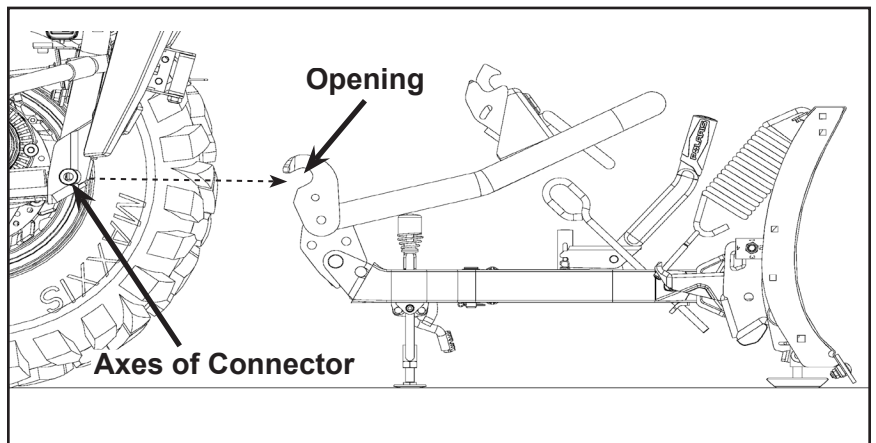
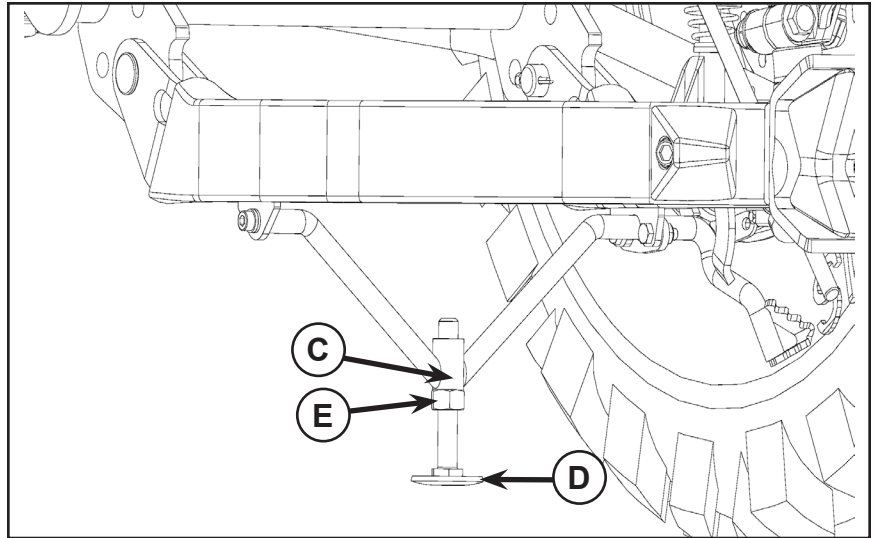
**NOTE:** The first installation requires you to adjust the height of the kickstand (C) depending on the ground clearance of your vehicle. It may be necessary to repeat the exercise if you add accessories to your vehicle that affect the ground clearance.

**NOTE:** If the vehicle is too low, you may need to adjust the vehicle height by changing the adjustment of the front suspension. Refer to vehicle manual for the adjustment method.

## HEIGHT ADJUSTMENT OF THE KICKSTAND:

The kickstand (C) must support the push frame so the opening of the hook up aligns with the mount plate pin for easy installation and removal of the plow system. Loosen the jam nut (E) and screw the kickstand shoe (D) in or out to achieve the desired height. Check the height to make sure the hook up opening and the mount plate pin are aligned. Tighten the jam nut (E) to secure the kickstand in place.

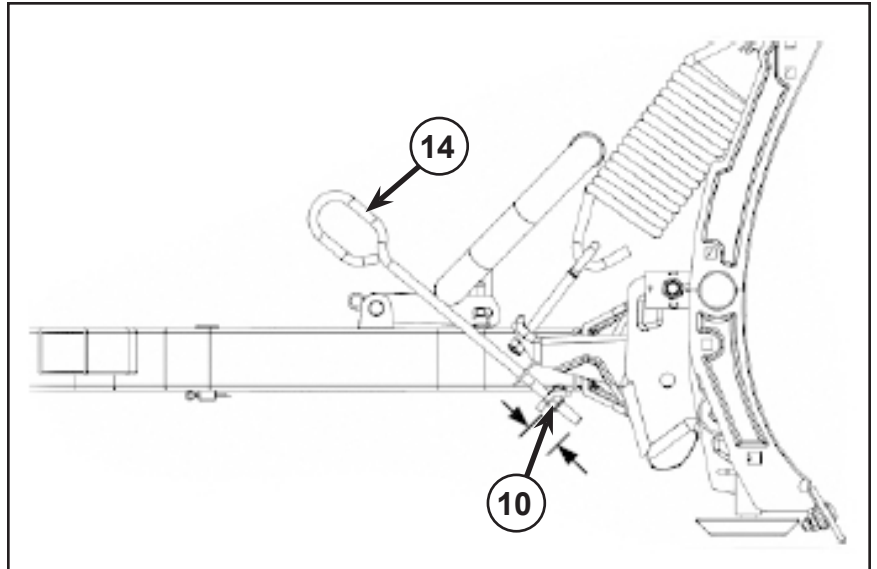
**NOTE:** It may be necessary to install the jam nut on the opposite side of the kickstand if additional adjustment is required.





## WINCH LINK INSTALLATION AND ADJUSTMENT:

Assemble the winch link (14) to the plow frame as shown in the illustration and secure in place with the M10 nylon nut (10). Attach the plow assembly to the unit and connect the winch cable to the winch link (14). Run the winch rope in until the auto stop is activated or until the winch hook makes contact with the fairlead. Lift up on the blade to determine if the plow system is at max lift height. The winch link should be adjusted so the plow system is at maximum lift height when the winch auto stop engages or the hook makes contact with the roller fairlead. Lower the plow system to the ground and loosen or tighten the nut (10) on the bottom end of the winch link as required. Repeat the above steps until the maximum lift height has been achieved.

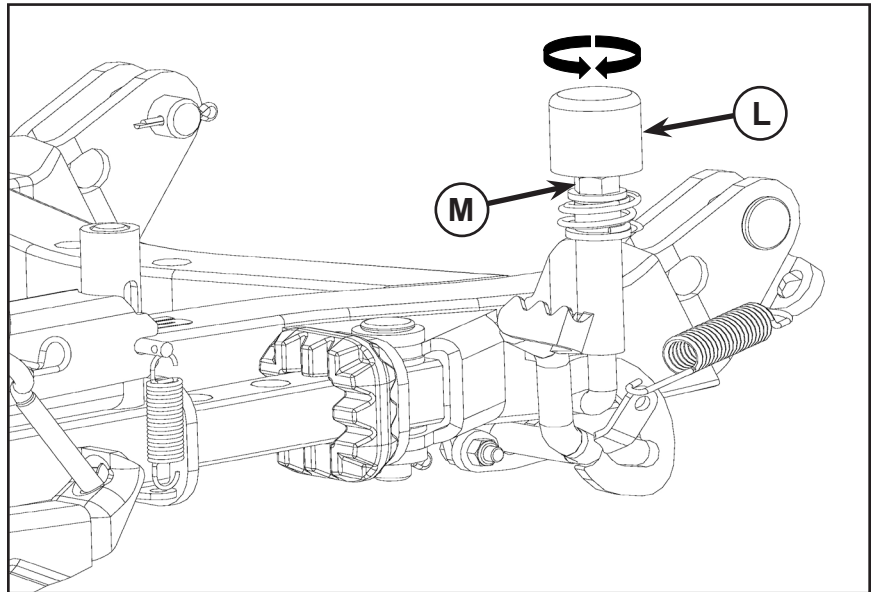


**Caution:** Always lower the plow system to the ground prior to making adjustments to avoid injury.

## ADJUSTMENT OF THE AUTO RETRACTING KICKSTAND:

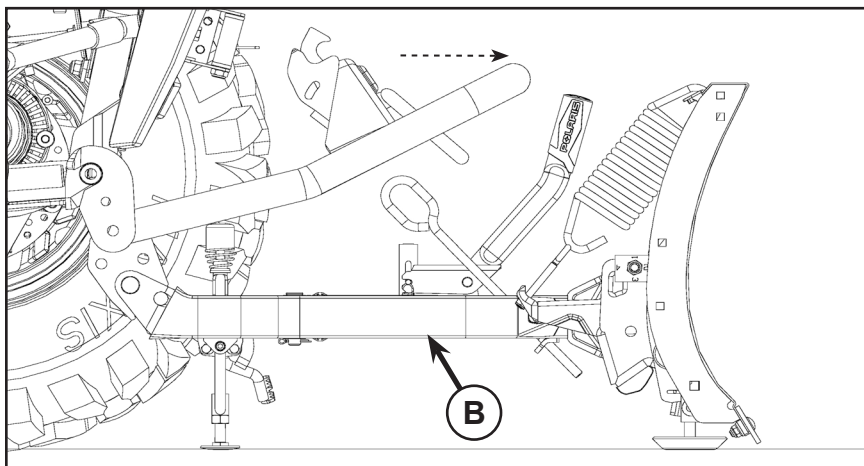
The auto retracting kickstand should be triggered when the cap of the J Rod makes contact with the kickstand lever of the machine. This activity should take place in the last 1/3rd of the plows travel. Follow the below steps if the kickstand fails to release properly:

- a. Check to be sure the plow is achieving its maximum lift height by lifting up on the blade to make sure the plow is against the tops at full lift. Repeat step "Height Adjustment of Kickstand" above if adjustment is required.
- b. Loosen the jam nut (M) on the bottom side of the cap (L) and screw the cap in or out to achieve the desired adjustment.
- c. Test the kickstand assembly by putting the kickstand down and lifting the plow system with the winch to it's max lift height.
- d. Repeat this process until the kickstand releases in the top 1/3rd of the plows travel.
- e. Tighten the jam nut to secure the cap in place.

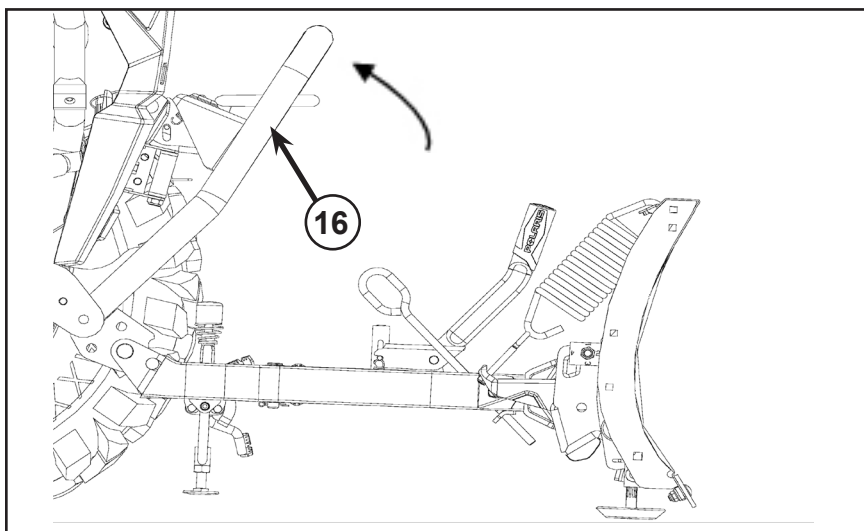


## PUSHFRAME INSTALLATION:

11. Move the vehicle towards the pushframe assembly. Make sure to align the vehicle with the pushframe (B).
12. Make sure the vehicle is fully engaged in the attachment plates on both sides.



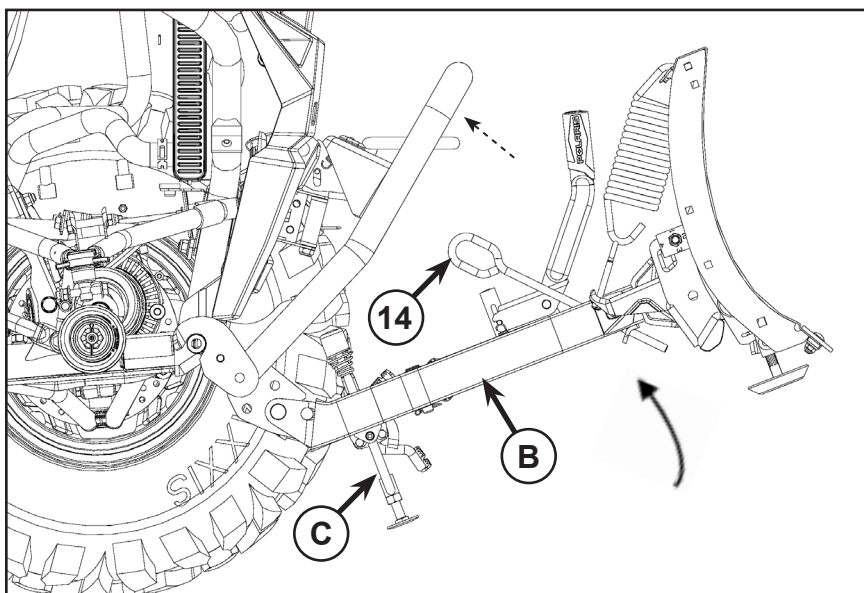
13. Raise the hook up (16) by pulling up towards the vehicle until the opening of the hook assembly latches securely around the top tube of the mount plate. If the hook up does not engage completely, check to be sure the lower latch point of the hook up is fully seated on the lower pin of the mount plate. Check for snow or ice accumulation that could cause misalignment of the system.



14. Once the pushframe (B) is attached to the vehicle, the kickstand (C) should be slightly raised. The kickstand shoe should not touch the ground. If it touches the ground, the kickstand shoe is not adjusted to the proper height. Repeat steps of adjusting the height of the kickstand.

15. Connect the hook of the winch onto the winch link (14).

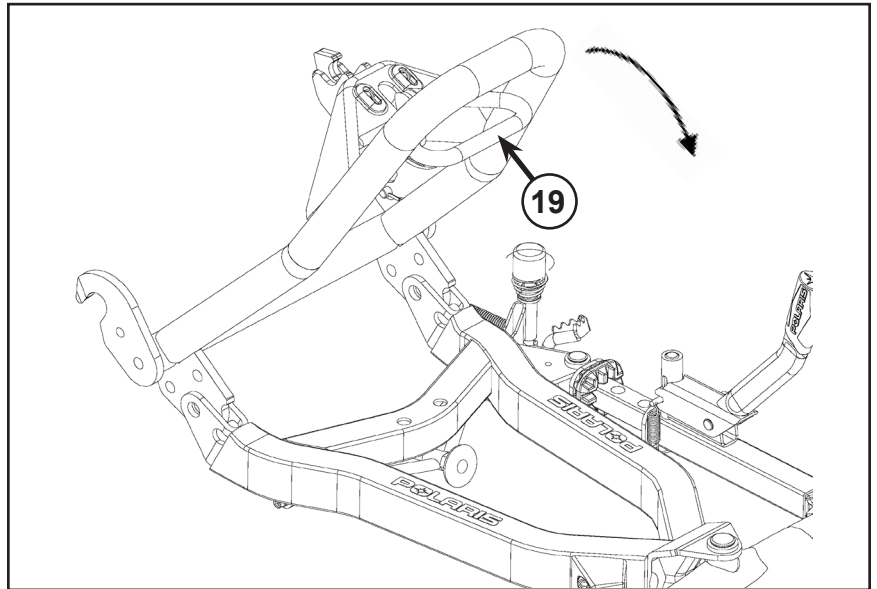
16. With the winch, raise the pushframe until the kickstand release lever engages and the kickstand is lifted automatically. The blade should be in the top 1/3rd of its travel when the kickstand retracts.



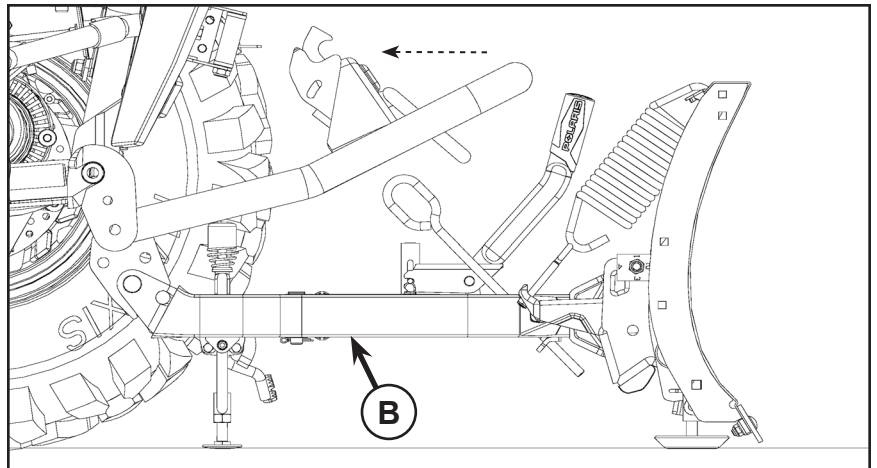
**NOTE:** Refer to the kickstand adjustment section for proper adjustment procedure if the kickstand fails to retract.

## PUSHFRAME REMOVAL:

17. Lower the pushframe using the winch until the blade touches the ground and the winch cable tension is fully released. Remove the hook of the winch from the winch link (14).
18. Lower the kickstand until the locking mechanism engages. At that time, the kickstand shoe should not touch the ground. If it touches the ground, the height of the kickstand must be adjusted.
19. Pull up the release handle (19) and hold the handle (19) while lowering it down until it stops. At that time the system is disengaged from the vehicle.

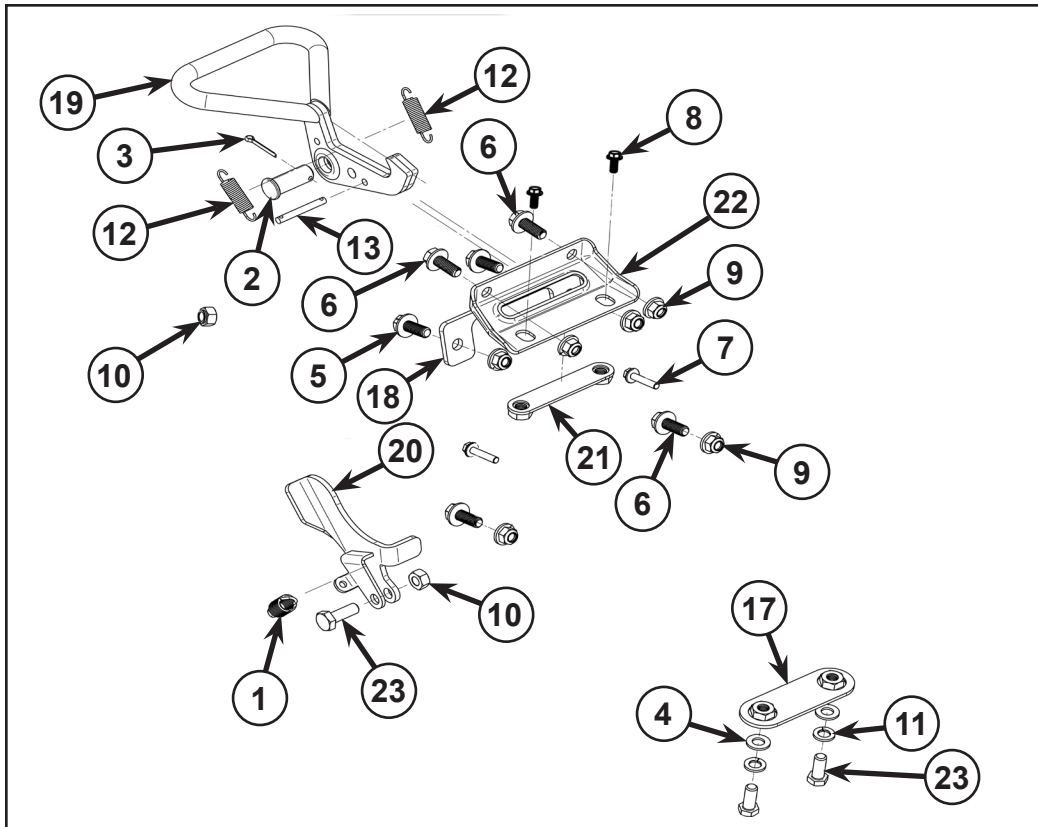


20. Retract the winch cable.
21. Slowly back the vehicle in a straight line up until it is no longer in contact with the pushframe (B).

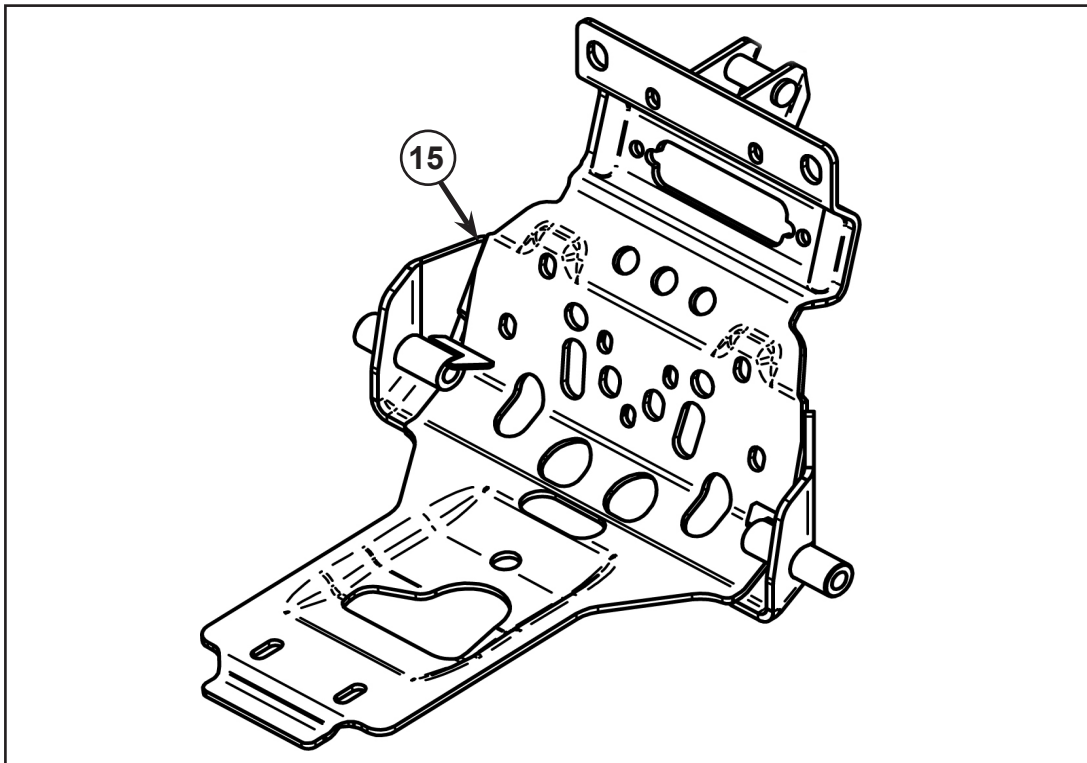


See table on page 2 for a complete part description.

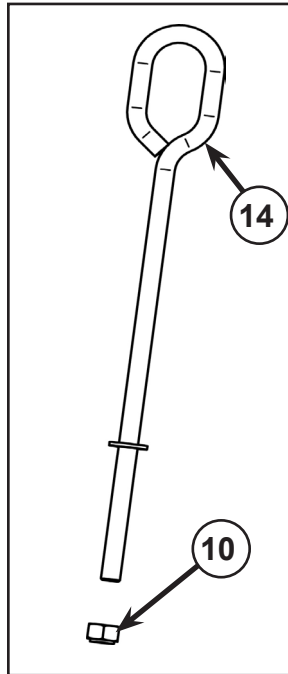
**Hardware Mounting  
Kit (2205531)**



**Mounting Plate  
(2205532)**



**Winch Link Kit  
(2205057)**



**Mid Mount Kit  
(2205533)**

