

REAR SOFTCAB KIT



P/N 2880608

APPLICATION

RZR 900, RZR 900 S

BEFORE YOU BEGIN

Read these instructions twice and check to be sure all parts and tools are accounted for. Please retain these installation instructions for future reference and parts ordering information.



KIT CONTENTS

Ref	Qty	Part Description	Part Number
1	1	Rear Softcab	2635593
	1	Instructions	9925503

TOOLS NEEDED

Safety Goggles

APPROXIMATE ASSEMBLY TIME

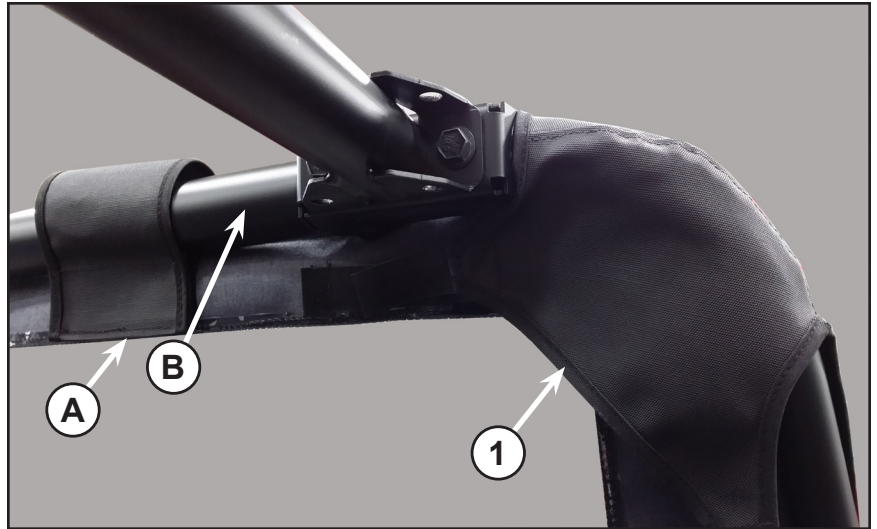
5 mins

IMPORTANT

Your Polaris REAR SOFTCAB KIT is exclusively designed for your vehicle. Please read the installation instructions thoroughly before beginning. Installation is easier if the vehicle is clean and free of debris. For your safety, and to ensure a satisfactory installation, perform all installation steps correctly in the sequence shown.

INSTALLATION INSTRUCTIONS

1. Place the vehicle in “**PARK**” and turn the key to “**OFF**” position. Remove the key from the vehicle.
2. Remove driver and passenger seats.
3. Put the softcab (1) on to the rear ROPS (B) and attach on both side using the Velcro (A). Ensuring the proper fitment on the side fix the Velcro in the center as shown in figure.



4. Hook the strap hooks (C) on to the body of vehicle behind the seats on both sides as shown in figure.



5. Fix the softcab (1) attaching the Velcro around the ROPS sides as shown in figure.



6. Wrap the softcab straps (C) around the ROPS bar ensuring it passes through gusset (D) as shown in figure.



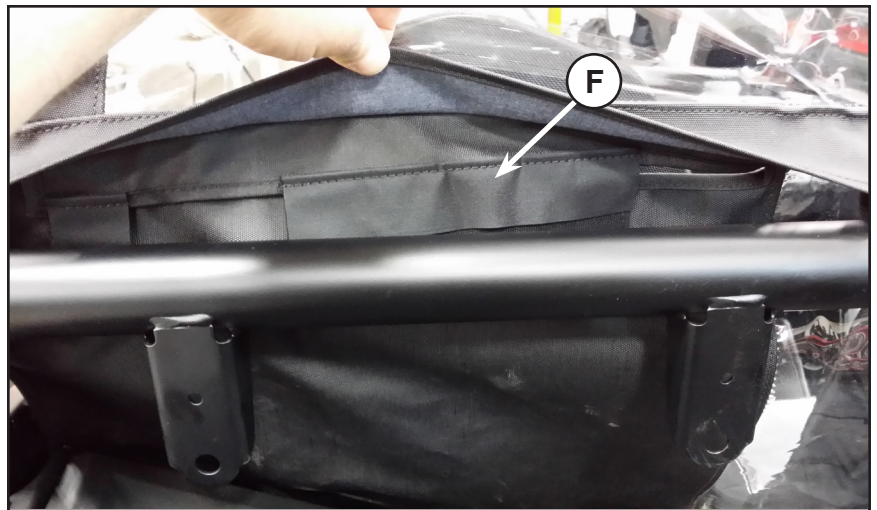
7. Tie the strap into the buckle (E) tightly. See figure.



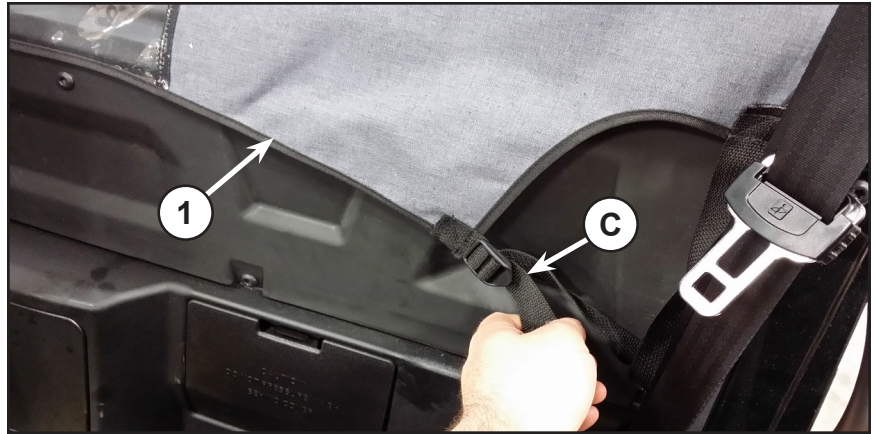
8. Fix the softcab (1) at the bottom with Velcro (A) on lower ROPS bar as shown in figure.



NOTE: If you have installed the seatbelt retractors on the ROPS bar, you need to open the Velcro (F) to access the seat belts. See figure.



9. Pull the strap (C) ends to tighten the softcab (1) as shown in figure.



10. Ensure the tight and proper fitment of the rear softcab (1).
11. Reinstall the driver and passenger seats.

