

WIND DEFLECTOR KIT



P/N 2881749, 2881751, 2881913

SLINGSHOT

APPLICATION

Verify accessory fitment at Polaris.com.

BEFORE YOU BEGIN

Read these instructions and check to be sure all parts and tools are accounted for. Please retain these installation instructions for future reference and parts ordering information.

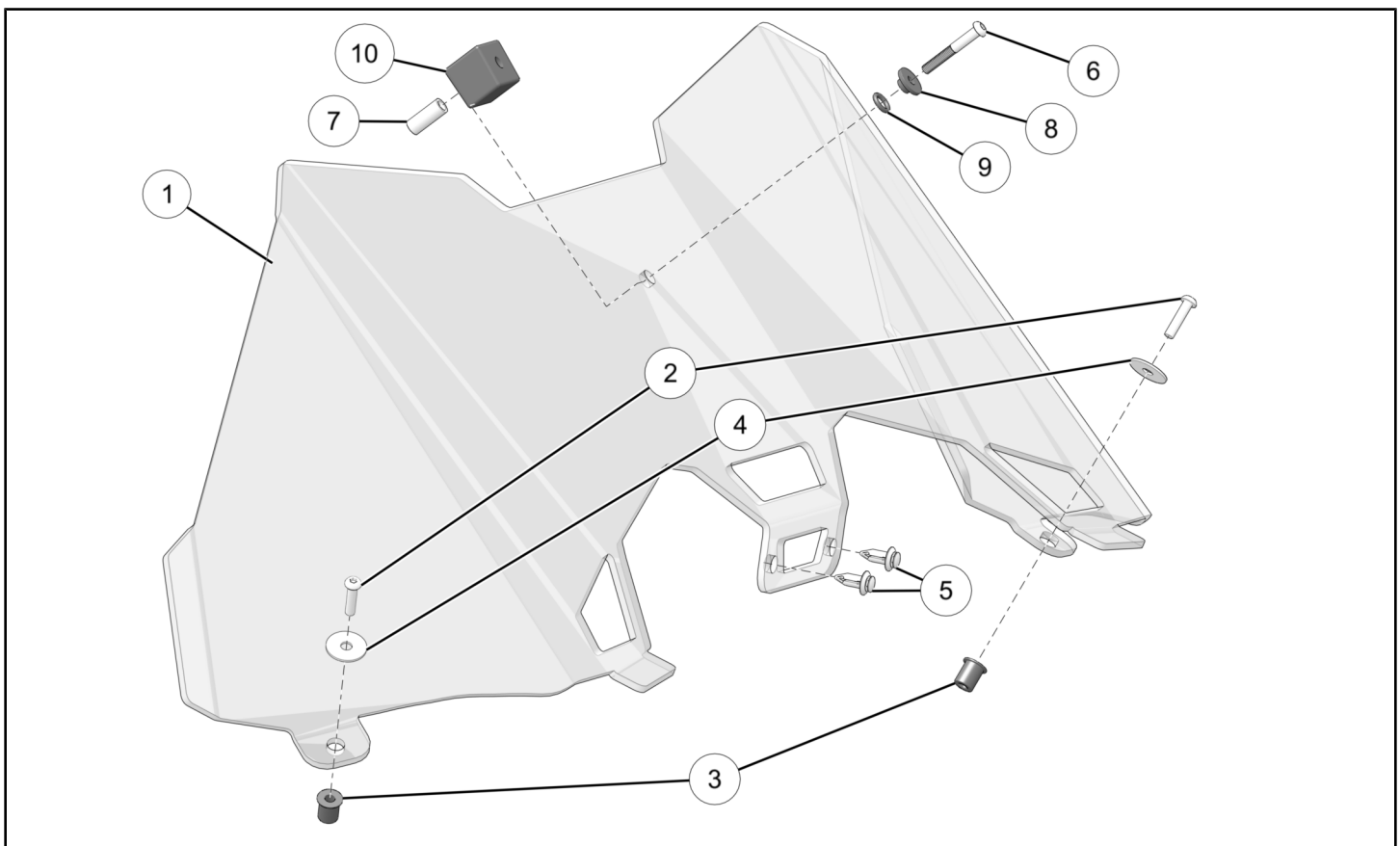
DISCLAIMER ACCESSORY WEIGHT

When adding accessories, equipment, passengers and luggage to your vehicle, do not exceed the total weight capacity of the vehicle or of the front or rear axle (GVWR or GAWR as indicated on the Safety Compliance Certification label). Ask an authorized dealer for specific weight information if you need assistance. It is the owner's responsibility to use the Polaris Slingshot Accessories website as a tool for limiting the amount of accessories, based on maximum allowable vehicle weight requirements. It may be a violation of the Clean Air Act or the NHTSA regulations to disregard these requirements. For a complete listing of the accessories that are available for your vehicle, please contact your authorized dealer or visit the online store web site:

Web Address (United States): <http://www.polaris.com/en-us/slingshot/shop/accessories>.

KIT CONTENTS

This Kit includes:



REF	QTY	PART DESCRIPTION	PART NUMBER
1	1	Winshield, Extreme Low, Tinted (Kit 2881749) Windshield, Vented, Mid (Kit 2881751) Windshield, Tall, Clear (Kit 2881913)	5452870 5452881 5452871
2	2	Screw, Hex Button Head, M6 X 1.0 X 25	7520236
3	2	Wellnut, M6 X 1.0	7547772
4	2	Washer, Rubber, 7.1 X 25.4 X 1.6	7556879
5	2	Push Pin Rivet, .315 X .325 X .787	7661855
6	1	Screw, Hex Button Head, M6 X 1.0 X 45 (Kits 2881751 and 2881913 only)	-
7	1	Washer, M6 X 25 (Kits 2881751 and 2881913 only)	-
8	1	Washer, Shoulder, M6 (Kits 2881751 and 2881913 only)	-
9	1	Washer, Rubber, O-ring (Kits 2881751 and 2881913 only)	-
10	1	Spacer, Rubber (Kits 2881751 and 2881913 only)	-
	1	Instructions	9927705

TOOLS REQUIRED

- Safety Glasses
- Drill
- Drill Bit: 5/16 inch (8 mm)
- Marker/Pencil
- Socket Set, Hex Bit, Metric
- Socket Set, Torx® Bit
- Torque Wrench

IMPORTANT

Your Wind Deflector Kit is exclusively designed for your vehicle. Please read the installation instructions thoroughly before beginning. Installation is easier if the vehicle is clean and free of debris. For your safety, and to ensure a satisfactory installation, perform all installation steps correctly in the sequence shown.

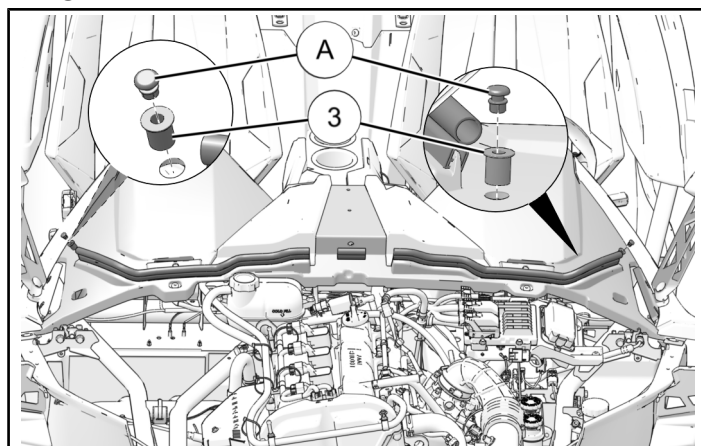
INSTALLATION INSTRUCTIONS

VEHICLE PREPARATION

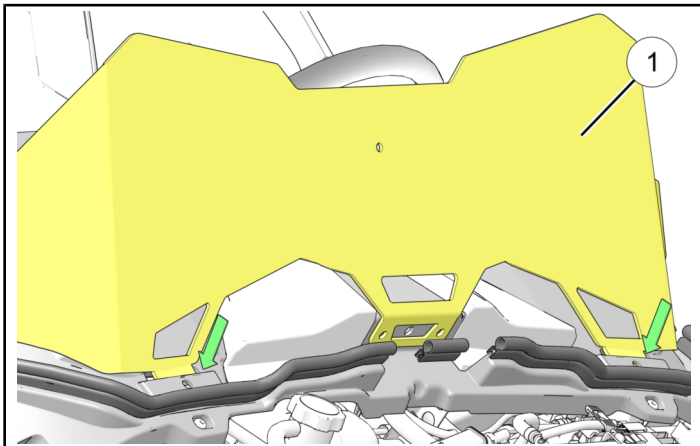
1. Turn key to "OFF" position and remove from vehicle.
2. Apply parking brake.
3. Ensure vehicle is parked on a flat surface and vehicle is stable prior to installation.
4. Open hood as per owner's manual.

WIND DEFLECTOR INSTALLATION

1. On both sides of main visor, remove and discard plugs Ⓐ (if installed) and install two new wellnuts ③ into holes as shown.



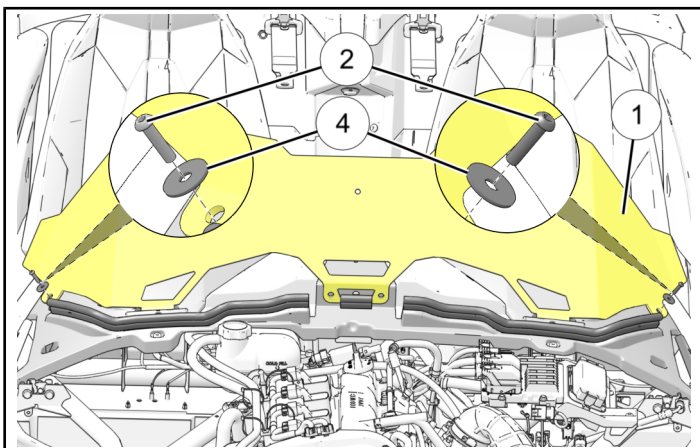
2. Install wind deflector ① by first engaging tabs and slots in front, then align mounting holes as shown with arrows.



3. Install two new screws ② and rubber washers ④ on driver and passenger sides of wind deflector. Torque screws to specification.

TORQUE

84 in. lbs. (9.5 Nm)



CENTER POST ATTACHMENT (IF EQUIPPED)

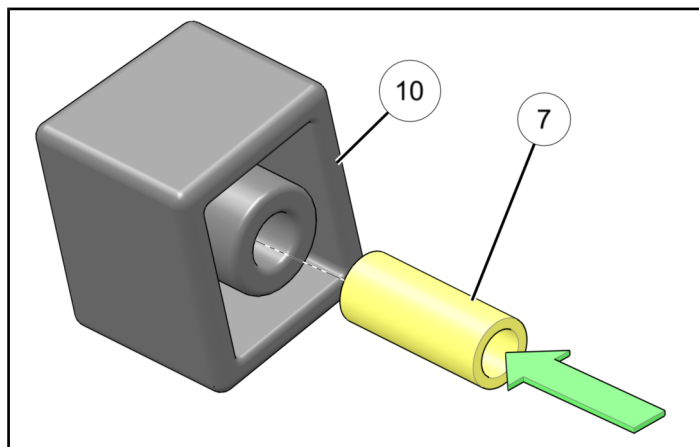
Model year 2015–2016 and All Canadian Slingshot models are equipped with a center post.

If your vehicle is not equipped with a center post, skip to next section **Mark and Drill Holes**.

1. Install washer ⑦ into Rubber Spacer ⑩ as shown.

TIP

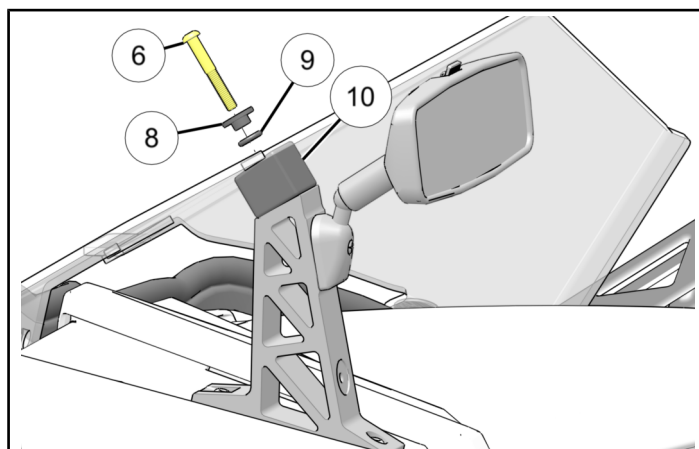
Use soapy water to assist with installation of washer.



2. Rubber spacer assembly ⑩ into place between wind deflector ① and top of center post (A). Install rubber O-ring ⑨, rubber washer ⑧, and screw ⑥ into place. Torque screw to specification.

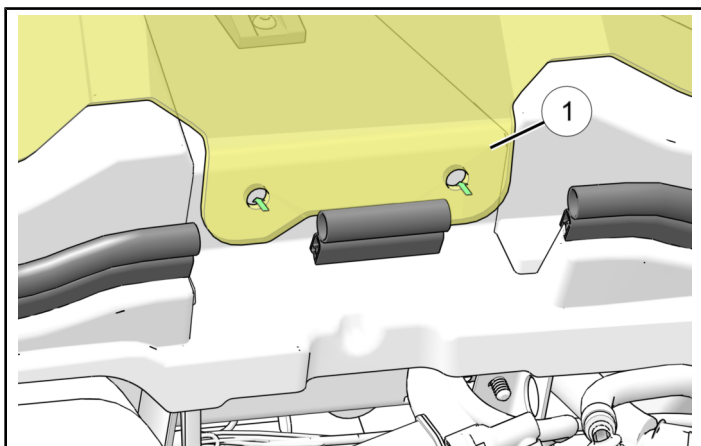
TORQUE

84 in. lbs. (9.5 Nm)



MARK AND DRILL HOLES

1. Mark the locations of both holes (shown with arrows) in front of wind deflector ① on plastic visor.



2. Remove wind deflector front vehicle and carefully set aside.
3. Drill two holes into markings created in **step 1** of this section.

IMPORTANT

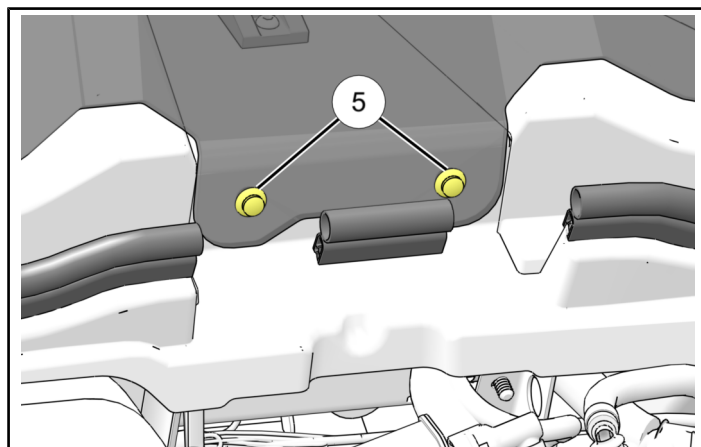
Maintain shallow drill bit penetration.

FEEDBACK FORM

A feedback form has been created for the installer to provide any comments, questions or concerns about the installation instructions. The form is viewable on mobile devices by scanning the QR code or by clicking [HERE](#) if viewing on a PC.

FINAL ASSEMBLY

1. Reinstall wind deflector following instructions in previous sections **Wind Deflector Installation** and **Center Post Attachment (If Equipped)**.
2. Install wind deflector center tab with two Push Pin Rivets ⑤ into newly drilled holes.



3. Close Hood.

FEEDBACK FORM

