

AXYS DEEP SNOW PREMIUM SHOCKS KIT



P/N 2881058

APPLICATION

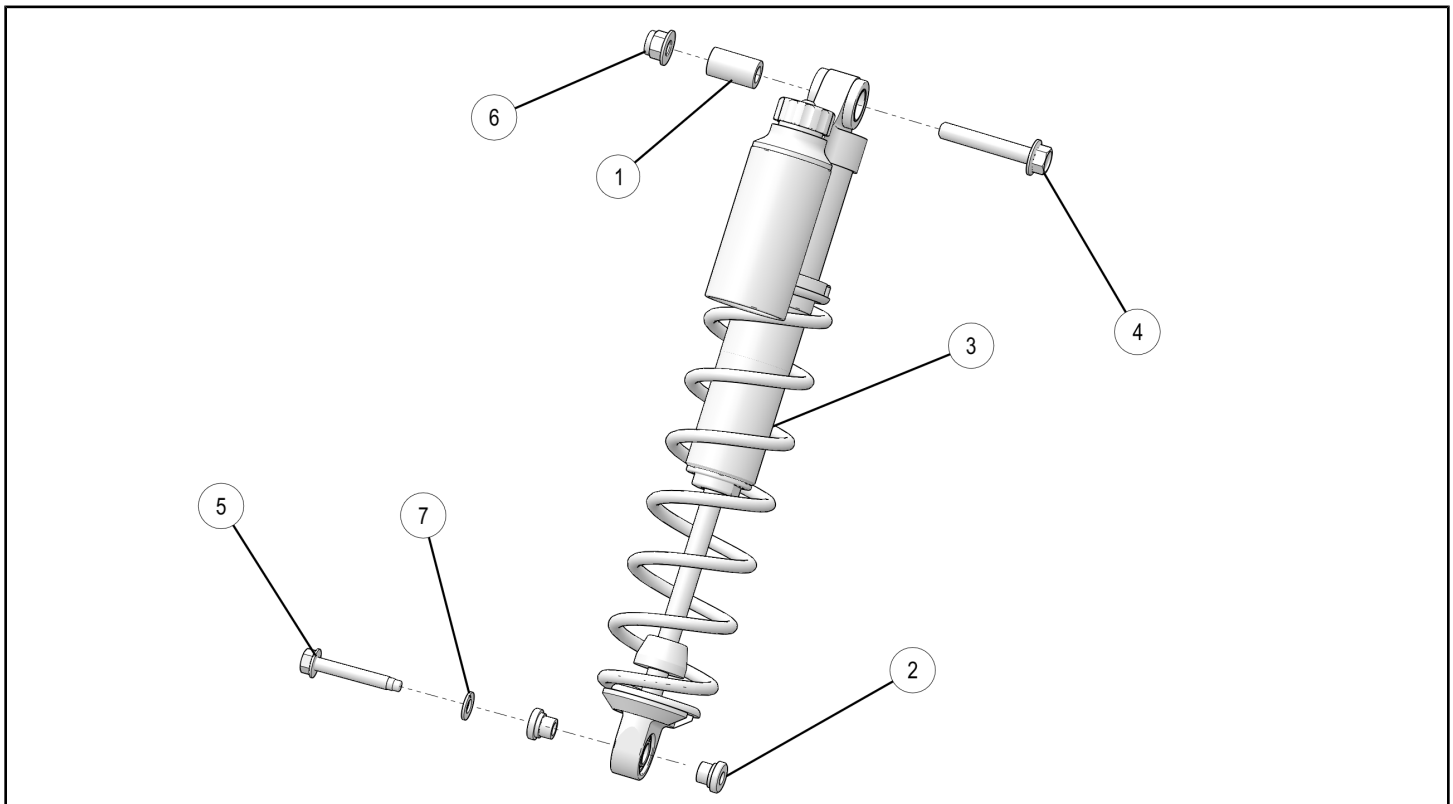
AXYS PRO RMK

BEFORE YOU BEGIN

Read these instructions and check to be sure all parts and tools are accounted for. Please retain these installation instructions for future reference and parts ordering information.

KIT CONTENTS

This Kit includes:



REF	QTY	PART DESCRIPTION	PART NUMBER
1	1	Bushing, M10 X 17.5 X 30	5137360
2	2	Spacer- 8.2 X 19	5138124
3	1	Shock-IFS	7044302
4	1	Screw, M10 X 1.5 X 60	7518941
5	1	Screw, Hex Flange, M8 X 1.25 X 50	7519245
6	1	Nut, M10 X 1.5	7547423
7	1	Washer- 0.344 X 0.688 X 0.063	7556524
	1	Instructions	9926734

TOOLS REQUIRED

- 15mm Socket with corresponding Ratchet
- 15mm Wrench
- Floor Jack
- Torque Wrench

IMPORTANT

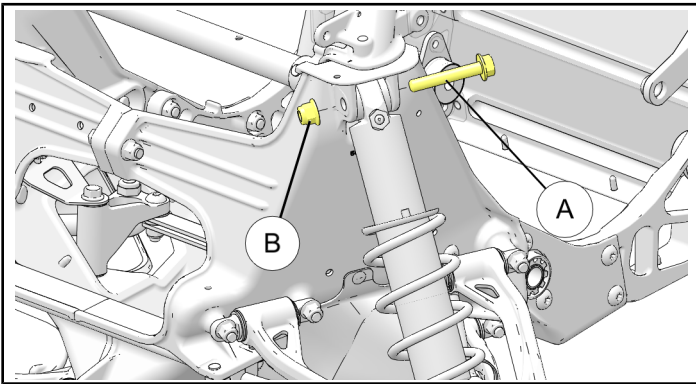
Your AXYS DEEP SNOW PREMIUM SHOCKS KIT is exclusively designed for your vehicle. Please read the installation instructions thoroughly before beginning. Installation is easier if the vehicle is clean and free of debris. For your safety, and to ensure a satisfactory installation, perform all installation steps correctly in the sequence shown.

ASSEMBLY TIME

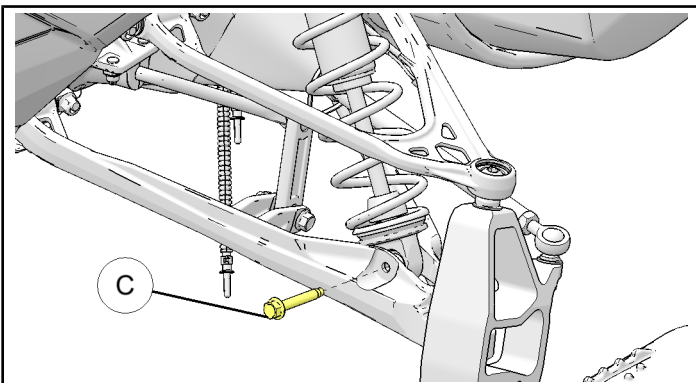
Approximately 30 minutes

INSTALLATION INSTRUCTIONS

1. Securely raise front end 4 inches off the ground using floor jack.
2. Remove side panels.
3. Remove rubber shock bolt access plug located in fender.
4. Remove M10 X 60 mm upper shock mounting bolt (A) and nut (B) using two 15 mm wrenches.

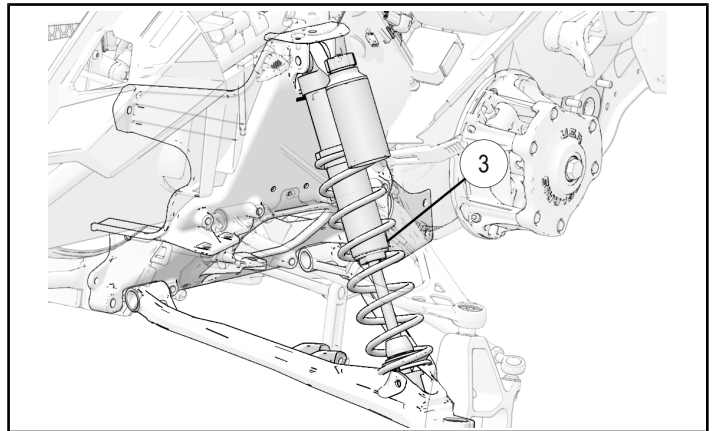


5. Remove M10 X 50 mm lower shock mounting bolt (C) using 15 mm socket and ratchet.

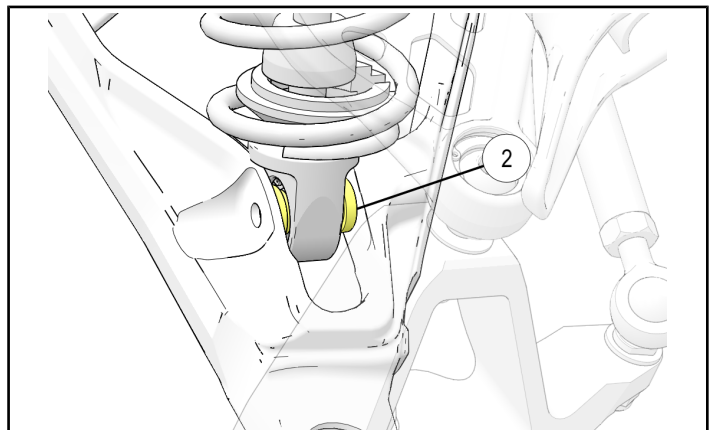


6. Remove shock by pulling top of shock outward.

7. While holding the spring in one hand with the top of the shock facing towards you, turn the shock clockwise until the spring adjustment nut is in the upward most position.
8. With the spring loose, slide the lower spring retainer off of the shock shaft.
9. Reusing the existing spring retainer and spring, assemble the new shock reversing Steps 7 and 8.
10. Install new shock ③ into proper mounting location.



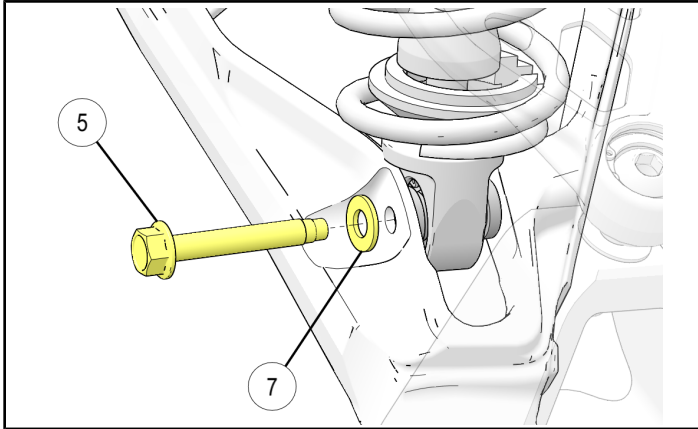
11. Insert aluminium spacers ② into lower mounting hole before installing bolt through lower shock.



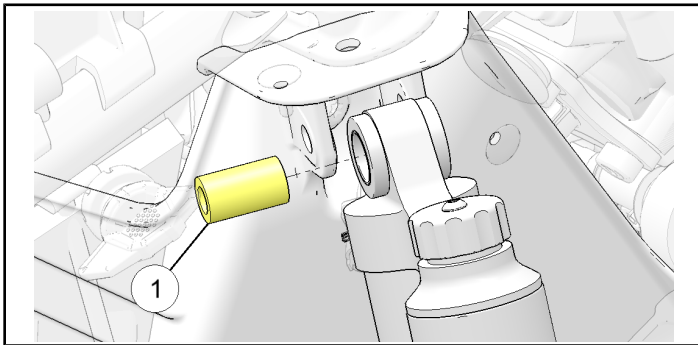
12. Install M8 X 50 mm lower mounting bolt ⑤ and washer ⑦ inserting from the front. Torque to below specification. Do not over tighten, as thread damage in lower control arm may occur.

TORQUE

18 ft. lbs. (25 Nm)



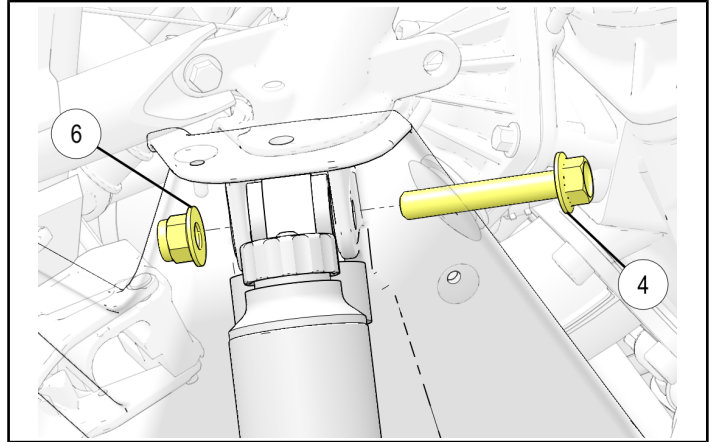
13. Insert bushing ① into upper mounting hole before installing bolt through upper shock.



14. Install M10 X 60 mm upper mounting bolt ④ and nut ⑥ inserting from back to front to ensure nut attachment is toward the front end of vehicle. Torque to below specification.

TORQUE

37 ft. lbs. (50 Nm)



15. Install rubber shock bolt access plug located in fender.

16. Install side panels back onto vehicle.

17. See Owner's manual for spring pre-load adjustment.