

AXYS PREMIUM SHOCKS KIT



P/N 2881946

APPLICATION

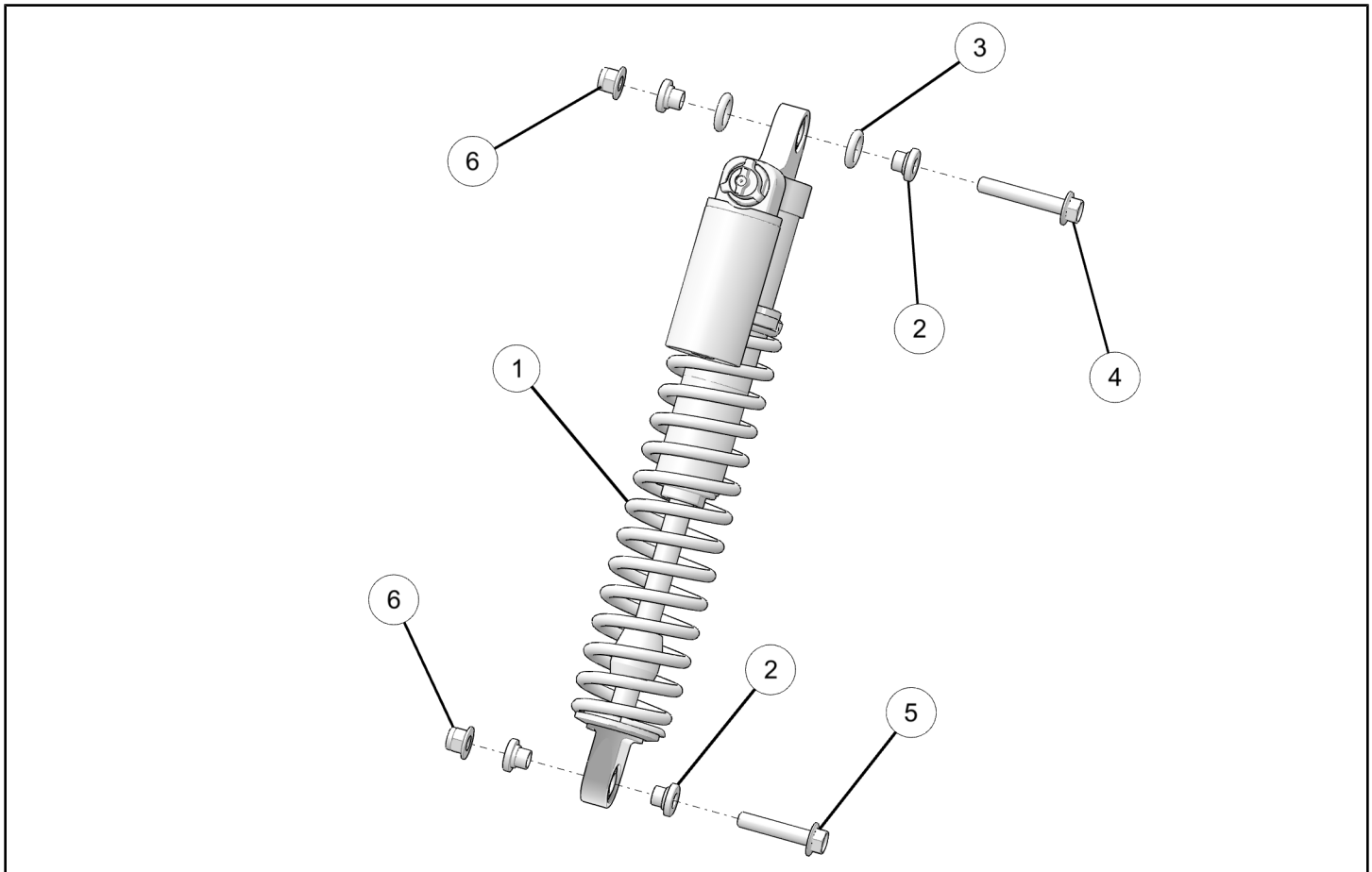
AXYS Trail Performance and Crossover

BEFORE YOU BEGIN

Read these instructions and check to be sure all parts and tools are accounted for. Please retain these installation instructions for future reference and parts ordering information.

KIT CONTENTS

This Kit includes:



REF	QTY	PART DESCRIPTION	PART NUMBER
1	1	Shock - IFS	1824485
2	4	Spacer - 10.20 X 12.62	5136530
3	2	O - Ring - .600 X .210	5412290
4	1	Screw - M10 X 1.5 X 60	7518941
5	1	Screw - M10 X 1.5 X 50	7518971
6	2	Nut - M10 X 1.5	7547423
	1	Instructions	9927058

TOOLS REQUIRED

- 15mm Socket with corresponding Ratchet
- 15mm Wrench
- Floor Jack
- Torque Wrench

IMPORTANT

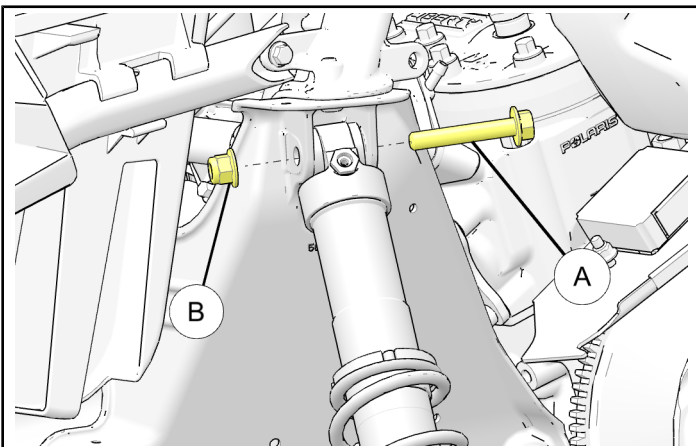
Your AXYS PREMIUM SHOCKS KIT is exclusively designed for your vehicle. Please read the installation instructions thoroughly before beginning. Installation is easier if the vehicle is clean and free of debris. For your safety, and to ensure a satisfactory installation, perform all installation steps correctly in the sequence shown.

ASSEMBLY TIME

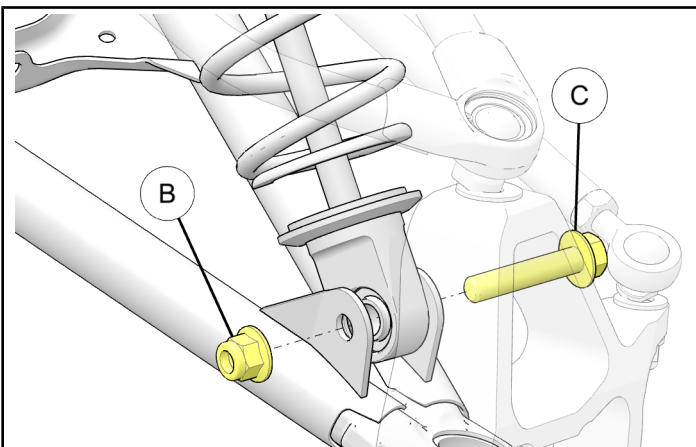
Approximately 30 minutes

INSTALLATION INSTRUCTIONS

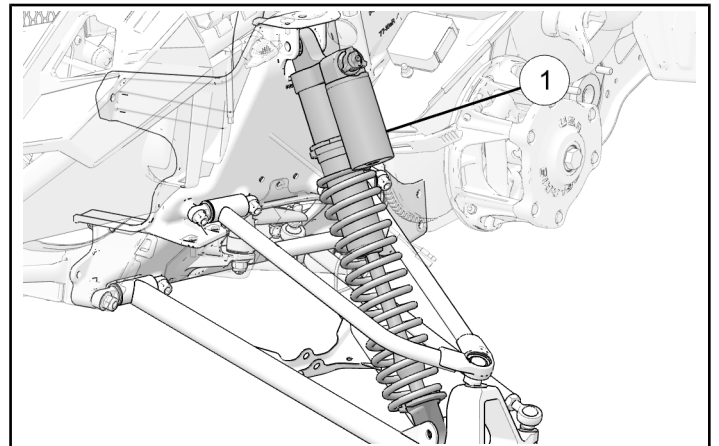
1. Securely raise front end 4 inches off the ground using floor jack.
2. Remove side panels.
3. Remove rubber shock bolt access plug located in fender.
4. Remove upper shock mounting bolt (A) and nut (B) using two 15mm wrenches.



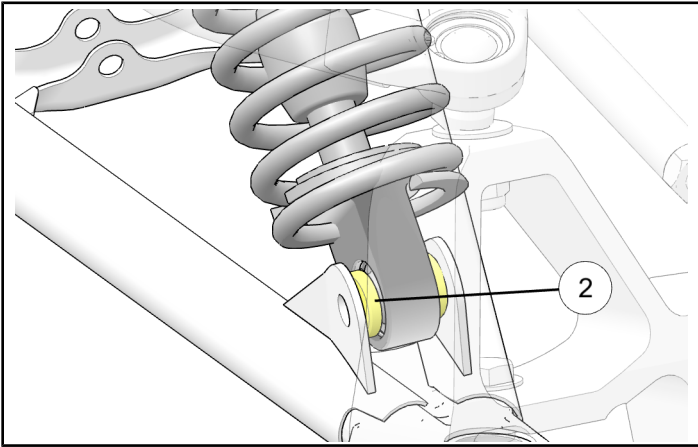
5. Remove lower shock mounting bolt (C) and nut (B) using 15mm socket, 15mm wrench and ratchet.



6. Remove shock by pulling top of shock outward.
7. If your shock came assembled with a new compression spring skip to Step 11. If not follow Steps 8, 9 and 10 to remove and reuse your stock spring.
8. While holding the spring in one hand with the top of the shock facing towards you, turn the shock clockwise until the spring adjustment nut is in the upward most position.
9. With the spring loose, slide the lower spring retainer off of the shock shaft.
10. Reusing the existing spring retainer and spring, assemble the new shock reversing Steps 8 and 9.
11. Install new shock ① into proper mounting location.



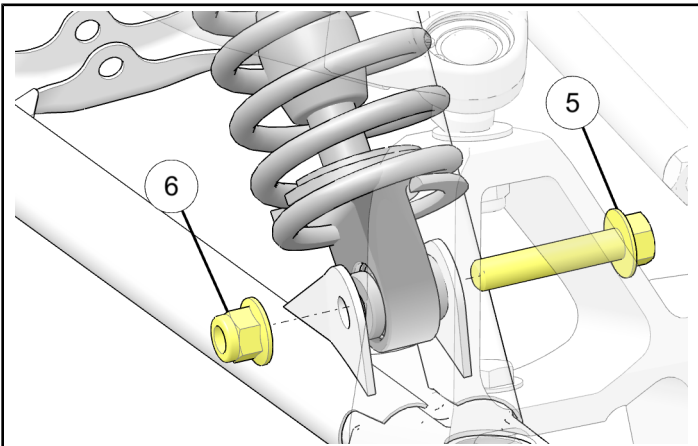
12. Insert aluminium spacers ② into lower mounting hole before installing bolt through lower shock.



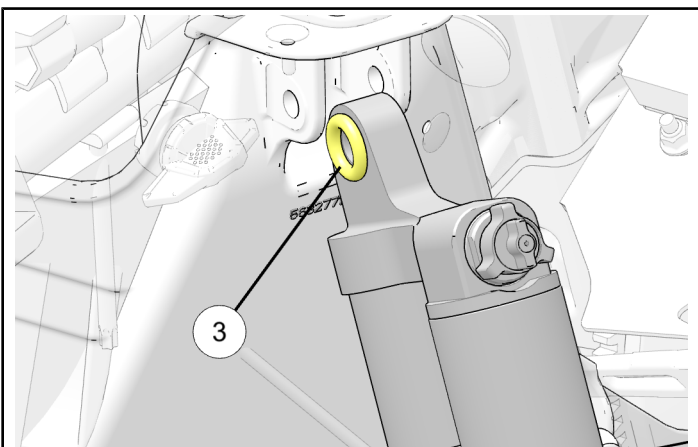
13. Install lower mounting bolt ⑤ and nut ⑥ inserting from the front. Torque to below specification. Do not over tighten, as thread damage in lower control arm may occur.

TORQUE

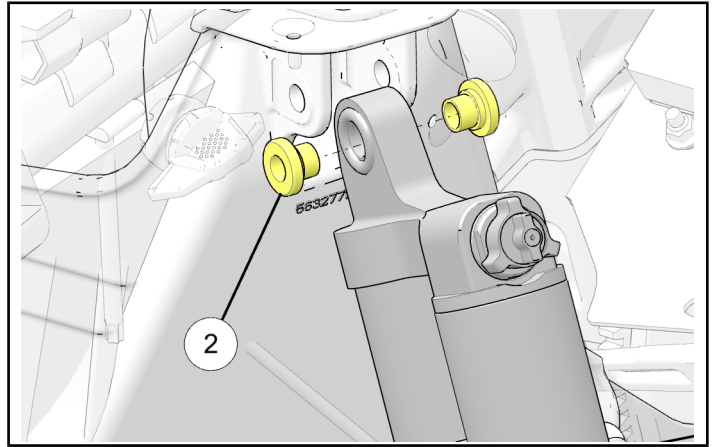
37 ft. lbs. (50 Nm)



14. Insert O-ring ③ into upper mounting hole before installing aluminium spacers.



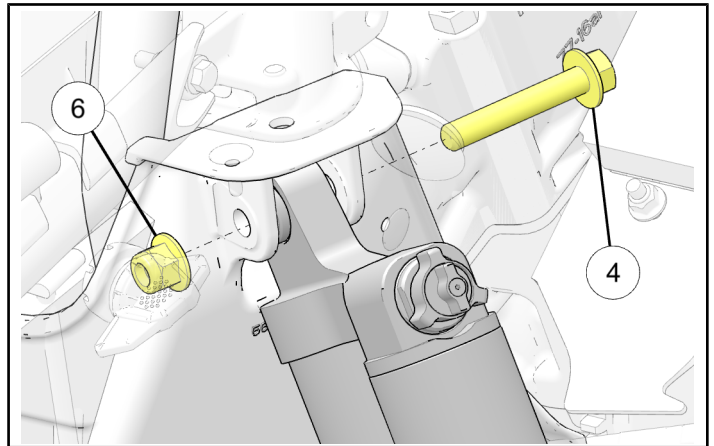
15. Insert aluminium spacers ② into upper mounting hole before installing bolt through upper shock.



16. Install upper mounting bolt ④ and nut ⑥ inserting from back to front to ensure nut attachment is toward the front end of vehicle. Torque to below specification.

TORQUE

37 ft. lbs. (50 Nm)



17. Install rubber shock bolt access plug located in fender.

18. Install side panels back onto vehicle.

19. See Owner's manual for spring pre-load adjustment.