

AXYS RUSH SWITCHBACK XCR REAR TRACK SHOCK KIT

P/N 2881948



APPLICATION

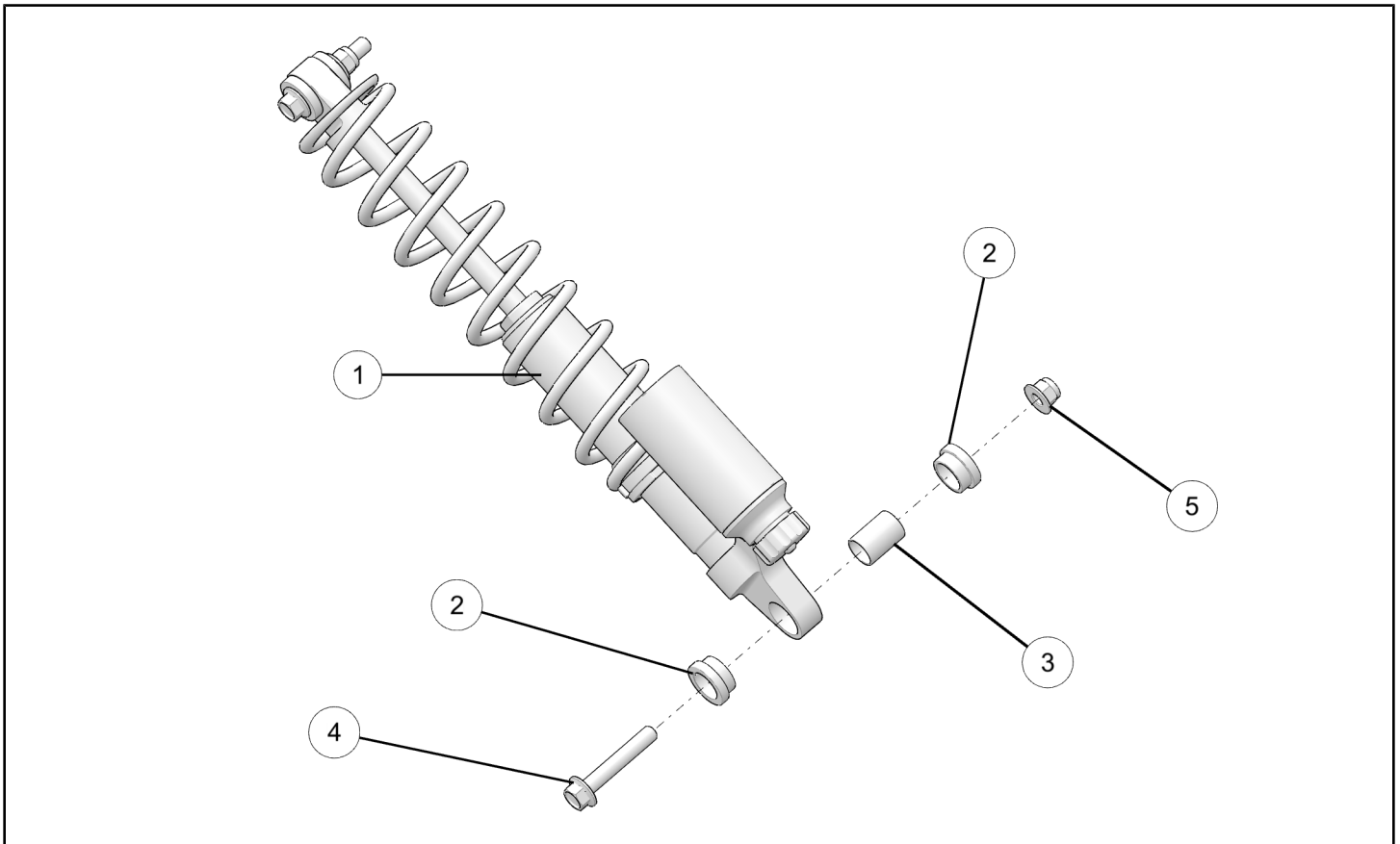
AXYS Snowmobile

BEFORE YOU BEGIN

Read these instructions and check to be sure all parts and tools are accounted for. Please retain these installation instructions for future reference and parts ordering information.

KIT CONTENTS

This Kit includes:



REF	QTY	PART DESCRIPTION	PART NUMBER
1	1	Rear Track Shock Assembly	1543714
2	4	Spacer	5136530
3	2	O - Ring	5412290
4	2	Screw, M10 X 1.5 X 60	7518941
5	2	Nut, M10 X 1.5	7547423
	1	Instructions	9927060

TOOLS REQUIRED

- 15mm Wrench or Socket (2X)
- Torque Wrench
- Floor Jack
- Drill
- 3/16" Drill Bit
- 3/8" Ratchet
- 13mm Socket
- 10mm Socket
- 10mm Wrench
- T-40 Torx®
- Rivet Gun
- Adjustable Wrench

IMPORTANT

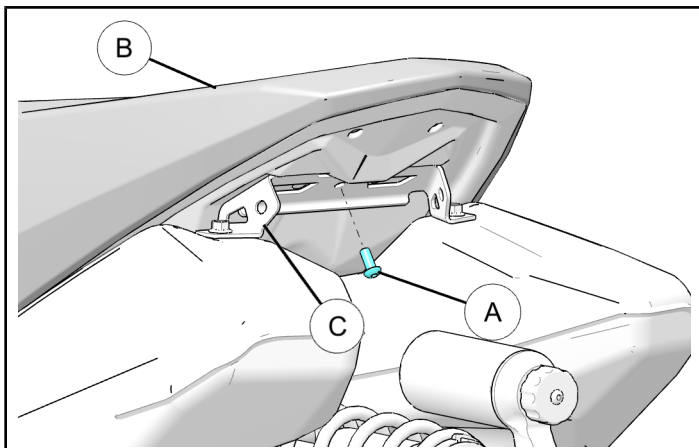
Your AXYS RUSH SWITCHBACK XCR REAR TRACK SHOCK KIT is exclusively designed for your vehicle. Please read the installation instructions thoroughly before beginning. Installation is easier if the vehicle is clean and free of debris. For your safety, and to ensure a satisfactory installation, perform all installation steps correctly in the sequence shown.

ASSEMBLY TIME

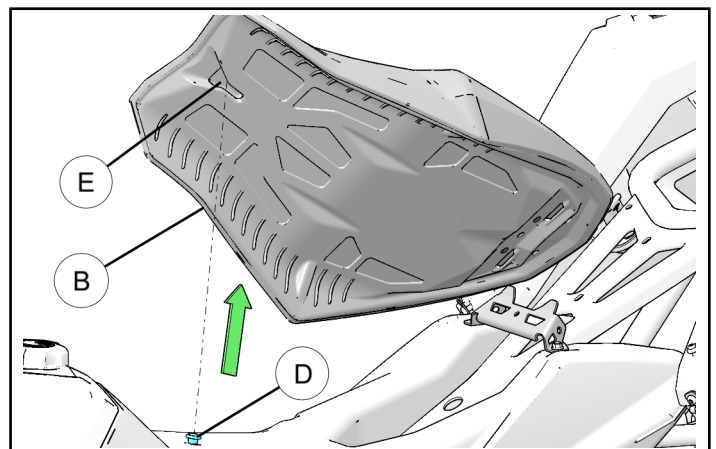
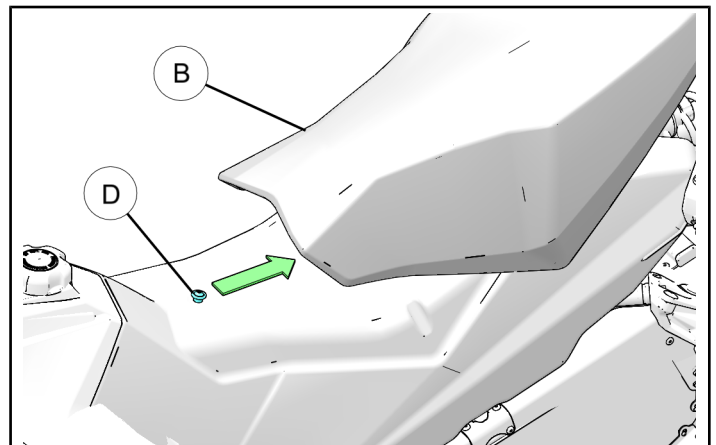
Approximately 30 minutes

INSTALLATION INSTRUCTIONS

1. Park the machine and turn the key to 'OFF' position. Remove the key from the vehicle. Raise the rear of the snowmobile off of the ground using a dedicated track stand or similar device. Do not lift snowmobile by the rear bumper as doing so will compress the rear track shock.
2. Using T30 Torx® remove bolt (A) that holds seat (B) to the rear seat bracket (C).



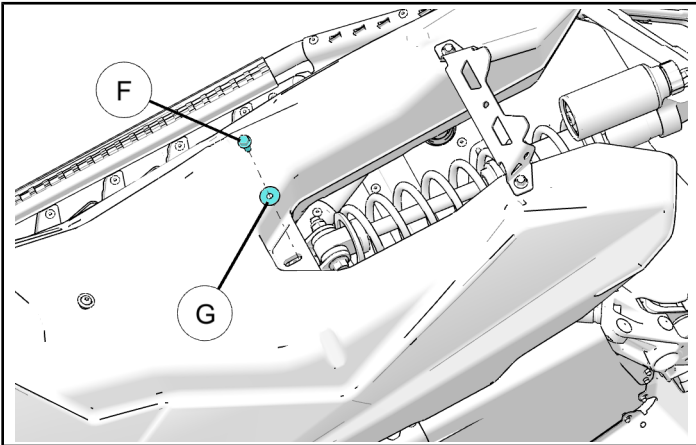
3. Pull back seat (B) so the front seat latch (E) disengages from locking feature (D) on the fuel tank as shown. Remove seat (B) from the vehicle.



4. Remove screw (F) and washer (G) securing the fuel tank to the rear track shock mount.

NOTE

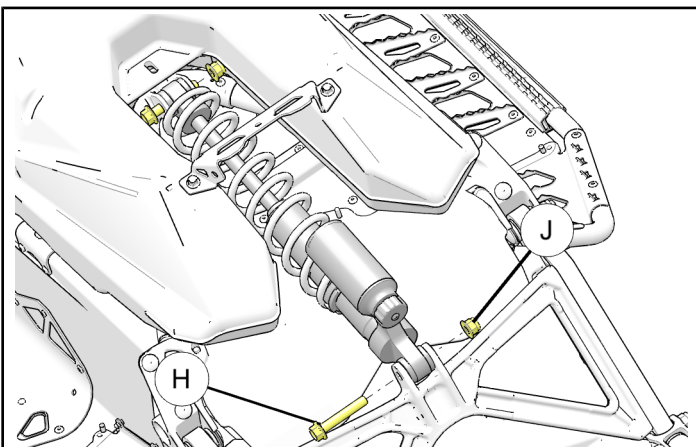
If vehicle is equipped with a rear cargo rack, remove cargo rack before proceeding.



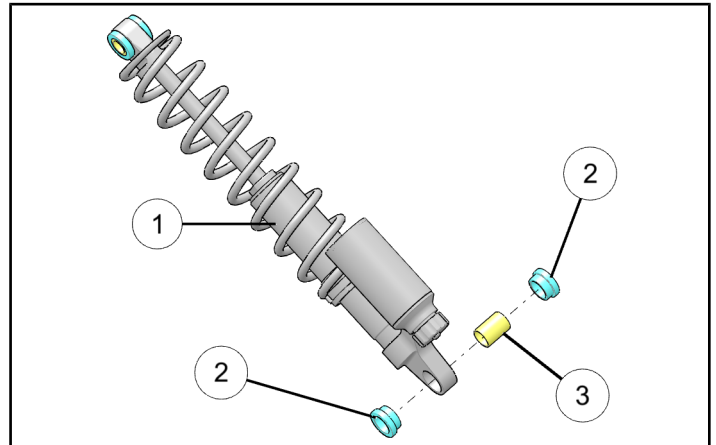
5. Gently raise and block the rear of the fuel tank enough to remove the forward shock mounting bolt (H) and nut (J). Remove the bolt (H) and nut (J) securing the shock to the X-brace and rear pivot.

NOTE

The screw securing the fuel tank on the X-Brace may have to be removed to allow the fuel tank to move to access the shock fastener. Do not shift the fuel tank too far to the left or right as it is secured at the front to the steering support.



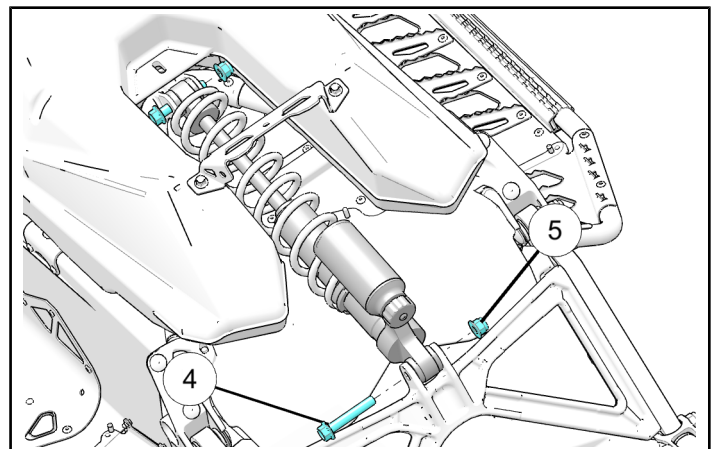
6. Install O-ring (3) and spacers (2) onto the rear shock (1) as shown.



7. Place the new rear shock (1) into position as shown and install screws (4) and nuts (5) and torque to specification.

TORQUE

35 ft. lbs. (47.45 Nm)



8. Reposition fuel tank in proper position and install fuel tank screw (F) and washer (G), removed in Step 4. If vehicle is equipped with a rear cargo rack, reinstall cargo rack. Reinstall seat and seat fastener, removed in Step 2 and 3.