

AXYS PREMIUM SHOCK KIT



P/N 2881972

APPLICATION

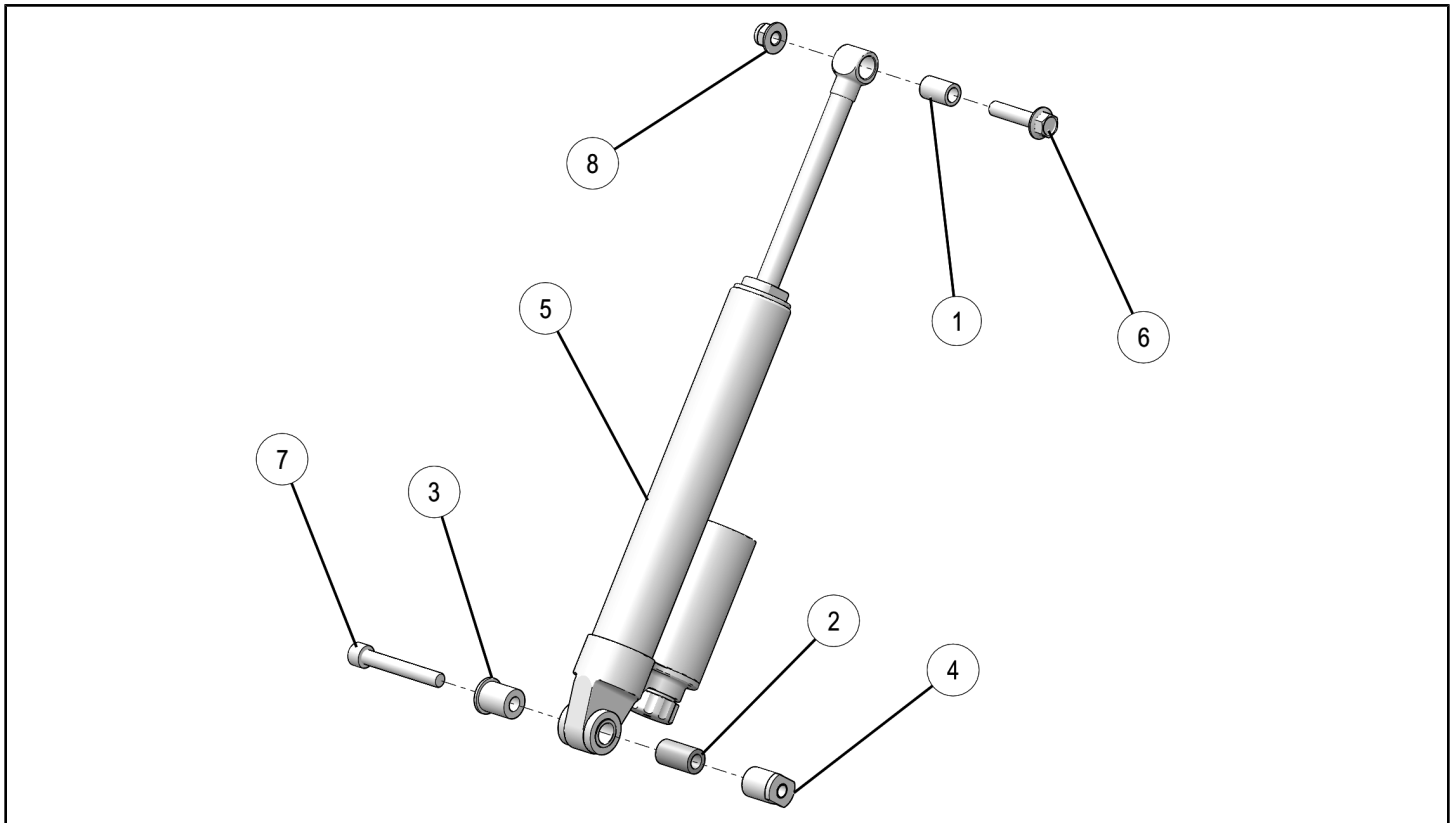
Axyx Switchback SP and 600 Voyager

BEFORE YOU BEGIN

Read these instructions and check to be sure all parts and tools are accounted for. Please retain these installation instructions for future reference and parts ordering information.

KIT CONTENTS

This Kit includes:



REF	QTY	PART DESCRIPTION	PART NUMBER
1	1	Bushing - M160D X 10.4 X 24, Long	5136569
2	1	Bushing - M10 X 17.5 X 30	5137360
3	1	Bushing - RTS, CB	5140273
4	1	Bushing - RTS Threaded	5140274
5	1	Shock - RTS w/e Assault	7044379
6	1	Screw, Hex Flange - M10 X 1.5 X 45	7518958
7	1	Screw, Socket Head - M10 X 1.5 X 70	7520368
8	1	Nut, Hex - M10 X 1.5, Nyloc	7547423
	1	Instructions	9927078

TOOLS REQUIRED

- Safety Glasses
- Torque Wrench
- 13mm Wrench or Socket
- Floor Jack

IMPORTANT

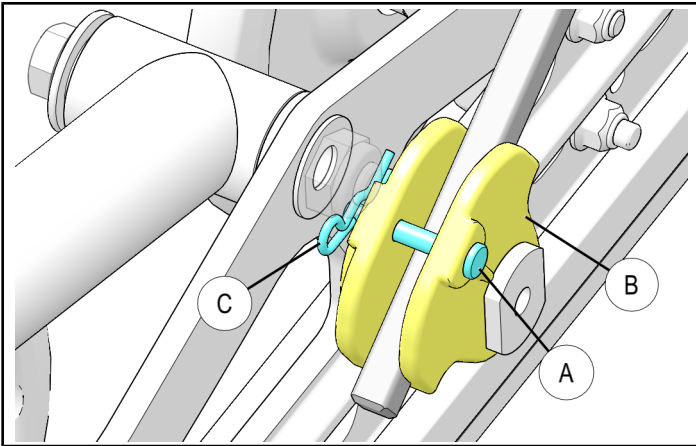
Your AXYS PREMIUM SHOCK KIT is exclusively designed for your vehicle. Please read the installation instructions thoroughly before beginning. Installation is easier if the vehicle is clean and free of debris. For your safety, and to ensure a satisfactory installation, perform all installation steps correctly in the sequence shown.

ASSEMBLY TIME

Approximately 20 minutes

INSTALLATION INSTRUCTIONS

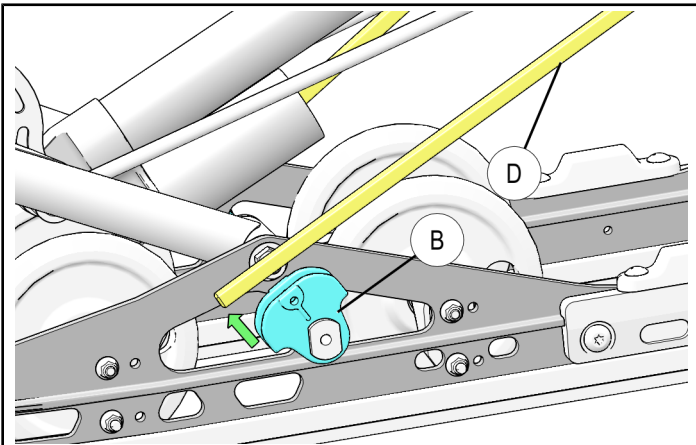
1. Remove rear suspension from the sled. Refer to service manual for rear suspension removal instructions.
2. Remove clevis pin (A) from spring perch (B) by removing hitch pin (C). Retain hardware for installation. Repeat on other side of the sled.



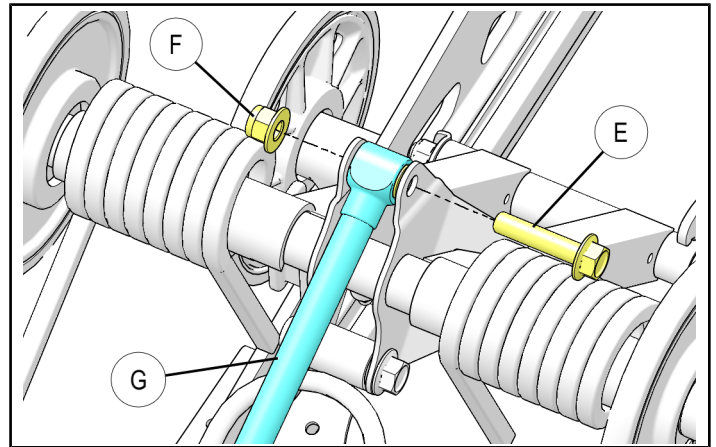
⚠ WARNING

Torsion spring will be in tension. Proceed to next step with care.

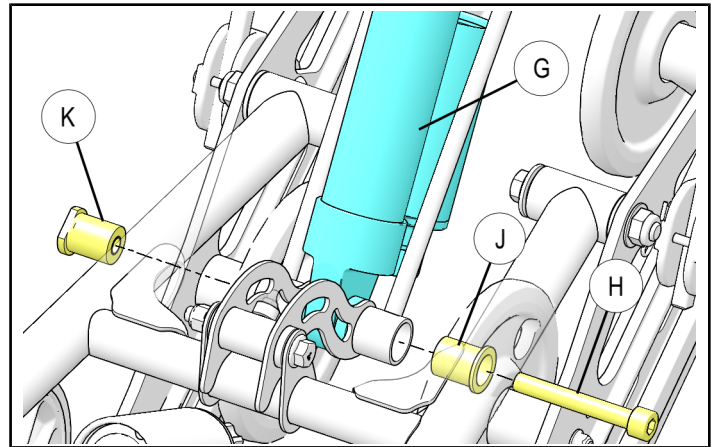
3. Release the tension from torsion spring (D) by removing long tail from spring perch (B) on rail beam. Repeat on other side of the sled.



4. Remove the screw (E) and nut (F) and the bushing securing stock shock (G) to the rear torque arm. Discard the hardware and bushing.



5. Remove screw (H) and bushings (J) (K) securing stock shock (G) to the lower mount. Discard the hardware.



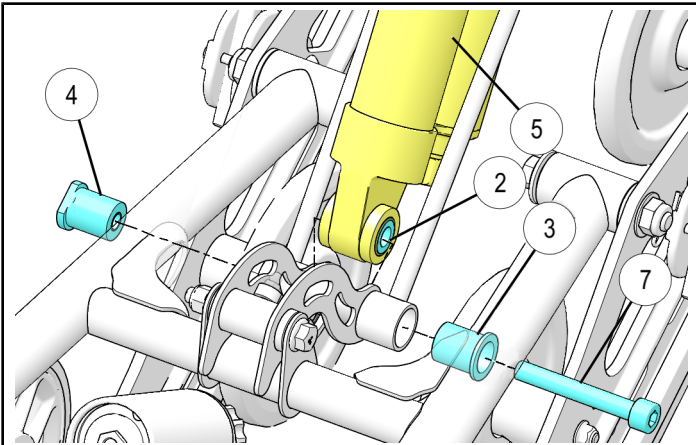
6. Install new shock assembly ⑤ onto lower mount using bushings ② ③ ④ and screw ⑦ as shown. Torque screw ⑦ to specification.

TORQUE

40 ft. lbs. (54.2 Nm)

NOTE

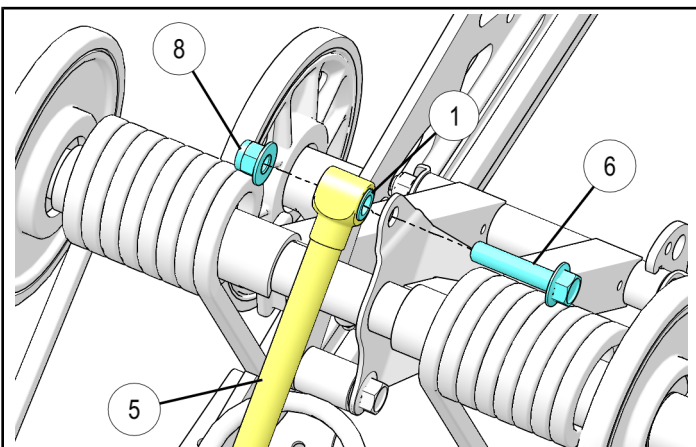
The new shock reservoir orientation should be down as shown below.



7. Install shock assembly ⑤ onto rear torque arm using bushing ①, screw ⑥, and nut ⑧ as shown. Torque screw ⑥ to specification.

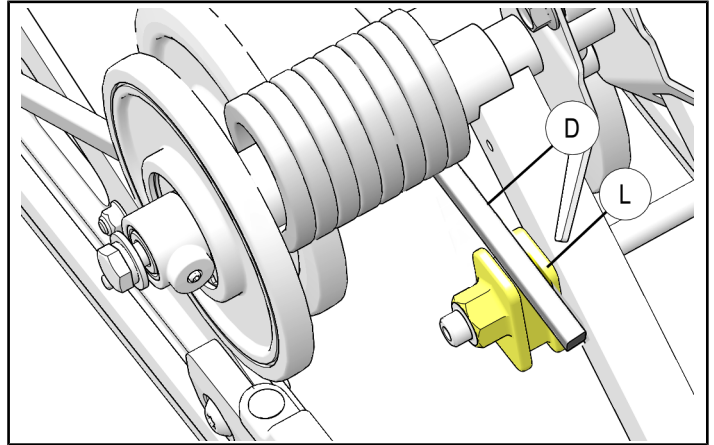
TORQUE

40 ft. lbs. (54.2 Nm)



NOTE

Place the short tail of torsion spring (D) on spring adjustment square (L) and set the adjustment square to desired position. Check Owner's manual for spring adjustment square (L) stock position. Repeat on other side of the sled.



8. Reinstall long tail (D) into the spring perch (B) using clevis pin (A) and hitch pin (C). Repeat on other side of the sled.
9. Reinstall rear suspension onto the sled. Refer to service manual for rear suspension installation instructions.