

EXTREME RUNNING BOARD KIT



P/N 2881952

APPLICATION

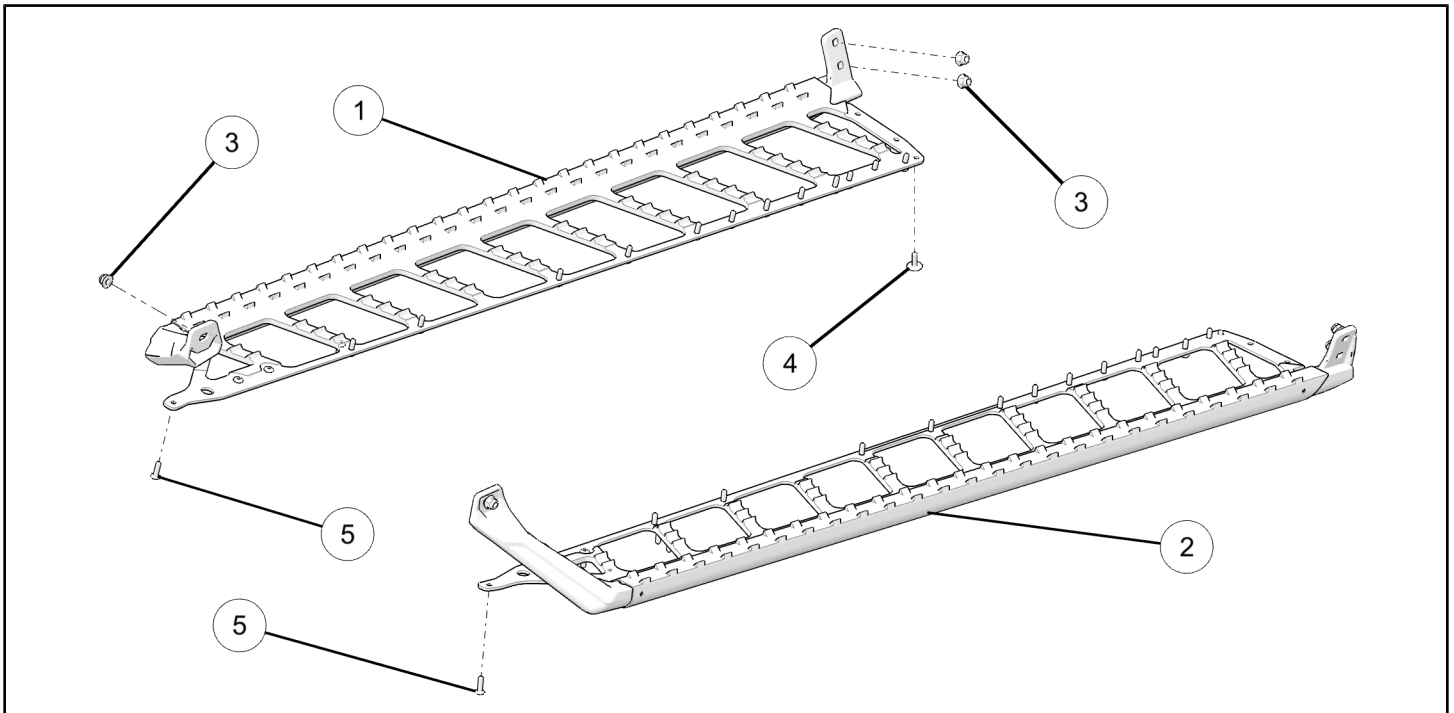
AXYS 174 RMK

BEFORE YOU BEGIN

Read these instructions and check to be sure all parts and tools are accounted for. Please retain these installation instructions for future reference and parts ordering information.

KIT CONTENTS

This Kit includes:



REF	QTY	PART DESCRIPTION	PART NUMBER
1	1	Running Board Assembly, LH	1022022
2	1	Running Board Assembly, RH	1022023
3	6	Nut, Hex Flange - M6 X 1.0	7547453
4	2	Rivet, 3/16 (0.251 - 0.375)	7621467
5	34	Rivet, 3/16 - 0.09 - 0.29	7661637
	1	Instructions	9927079

TOOLS REQUIRED

- 3/16" Drill Bit
- T40 Torx® Driver
- Rivet Gun
- 10mm Wrench or Socket
- Safety Glasses
- Drill

IMPORTANT

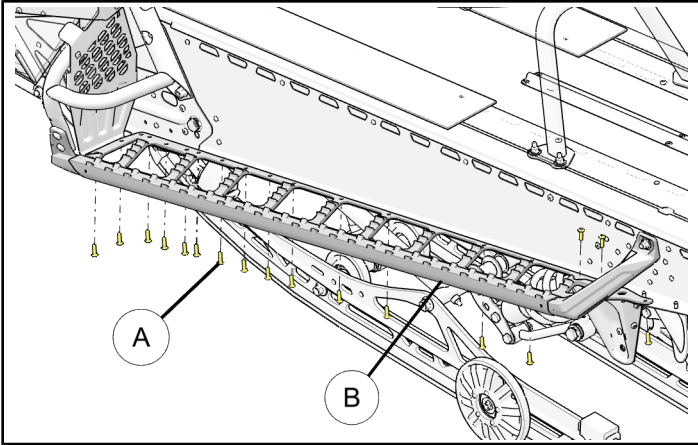
Your EXTREME RUNNING BOARD KIT is exclusively designed for your vehicle. Please read the installation instructions thoroughly before beginning. Installation is easier if the vehicle is clean and free of debris. For your safety, and to ensure a satisfactory installation, perform all installation steps correctly in the sequence shown.

ASSEMBLY TIME

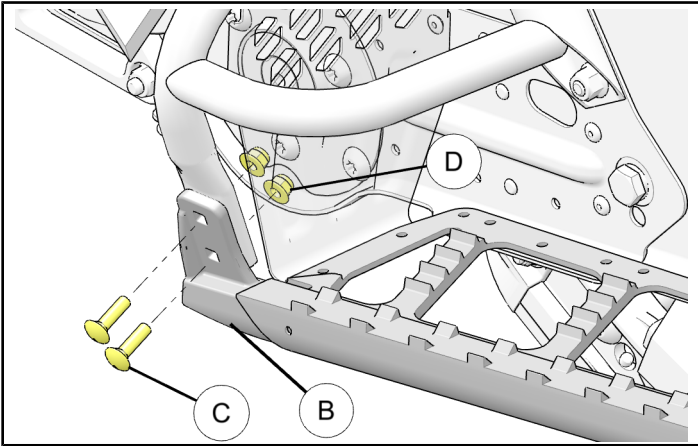
Approximately 60 minutes

INSTALLATION INSTRUCTIONS

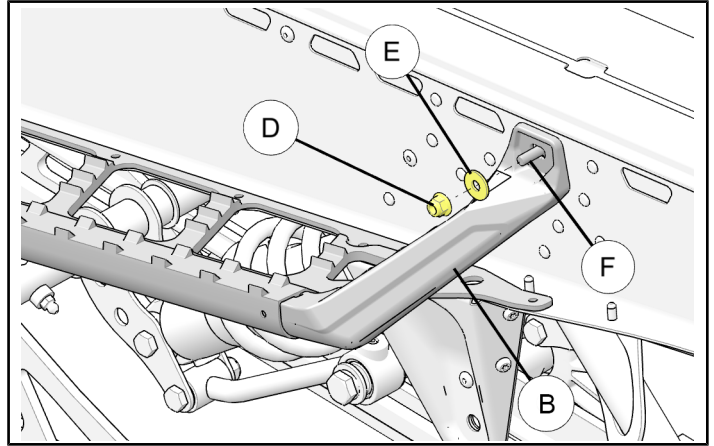
1. Using drill and 3/16" drill bit remove all seventeen rivets (A) from LH running board (B).



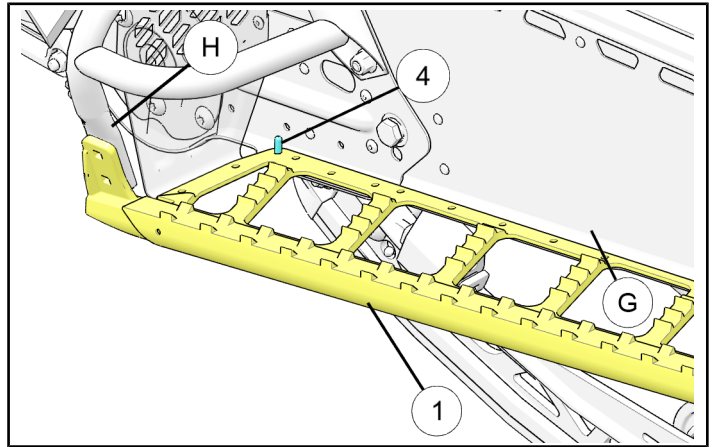
2. Using 10mm wrench remove nuts (D) and carriage bolts (C) from the front of running board (B). Discard nuts (D) and retain carriage bolts (C) for reinstallation.



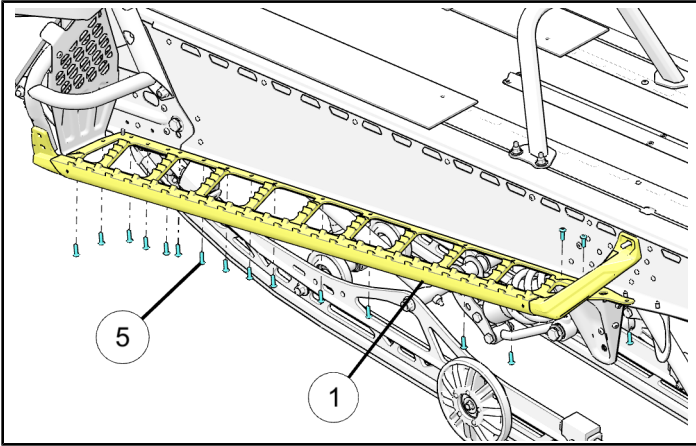
3. Remove nut (D) and washer (E) from bolt (F) holding running board (B) onto rear casting. Remove running board (B) from the sled. Discard nut (D) and retain washer (E) for reinstallation.



4. Align new LH running board ① mounting holes with LH side tunnel (G) and footrest (H) holes. Loosely install rivet ④ from bottom side into the front corner hole as shown.



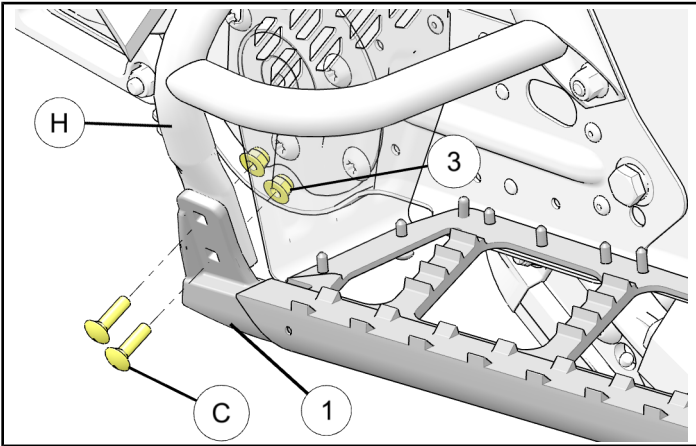
5. Using rivet gun install rivets ⑤ into running board ① holes in the bottom up vs top down orientation as shown.



6. Install carriage bolts (C) and new nuts ③ attaching front of the running board ① to the footrest (H) as shown. Torque nuts to specification.

TORQUE

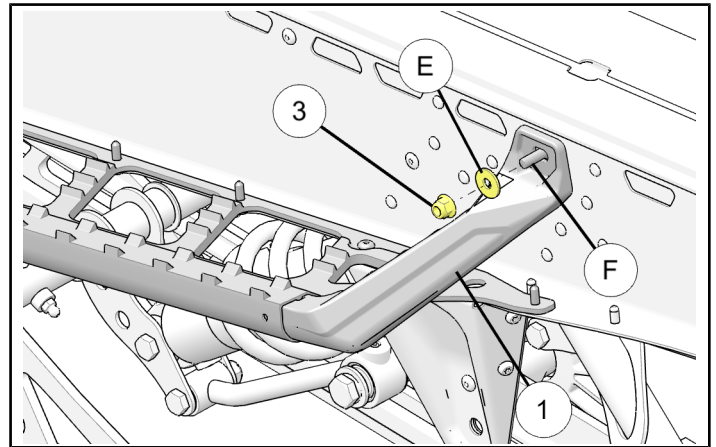
8.8 ft. lbs. (12 Nm)



7. Install running board ① onto existing screw (F) on rear casting and install retained washer (E) and new nut ③. Torque nut ③ to specification.

TORQUE

8.8 ft. lbs. (12 Nm)



8. Repeat Step 1 through Step 7 for installing RH running board ②.