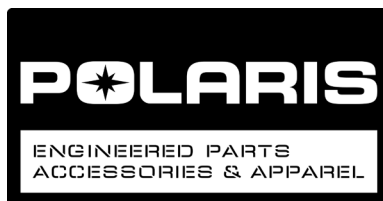


AXYS X-2 PASSENGER SEAT KIT

P/N 2880378



APPLICATION

Pro X Models; Pro S Models

BEFORE YOU BEGIN

Read these instructions thoroughly and make sure all parts and tools are accounted for. Please retain these installation instructions for future reference and parts ordering information.

KIT CONTENTS

Qty	Part Description	Part Number
1	ASM Passenger Seat	2686417
1	Seat Strap Plate	5260480
1	Spring - Compression .375x12.587, 150#	7043160
2	Screw HXFL M6x1.0x20	7519121
4	Nut HXFL M6x1.0	7547453
1	Seat Strap	2686469
1	Instructions	9925591

TOOLS NEEDED

13 mm Socket	Ratchet	10 mm Socket	T-30 Torx Wrench
15 mm Socket	Torque Wrench	15 mm Wrench	T-40 Torx Wrench
Spring Compression Tool			

APPROXIMATE ASSEMBLY TIME

20 min (Pro X Models),
60 min (Pro S Models)

NOTE: Before proceeding, for Pro S models the spring compressor tool (P/N 2870623) must be used to install the heavy duty spring.

IMPORTANT

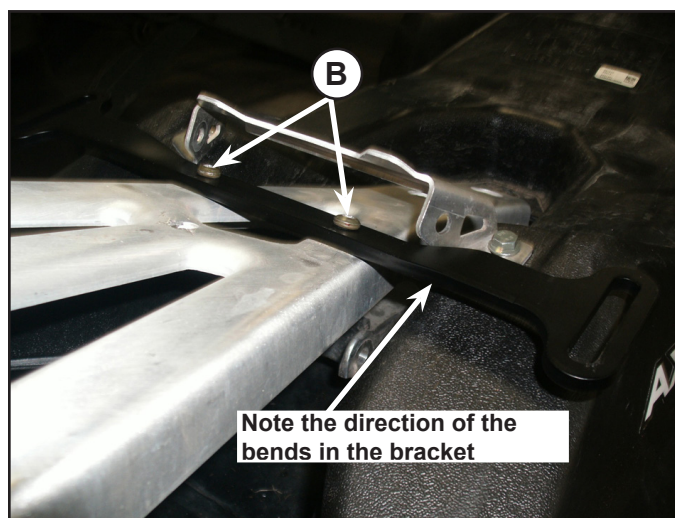
Your Polaris AXYS X-2 PASSENGER SEAT KIT is exclusively designed for your vehicle. Please read the installation instructions thoroughly before beginning. Installation is easier if the vehicle is clean and free of debris. For your safety, and to ensure a satisfactory installation, perform all installation steps correctly in the sequence shown.

INSTALLATION INSTRUCTIONS FOR PRO X MODELS (HEAVY DUTY SPRING NOT REQUIRED)

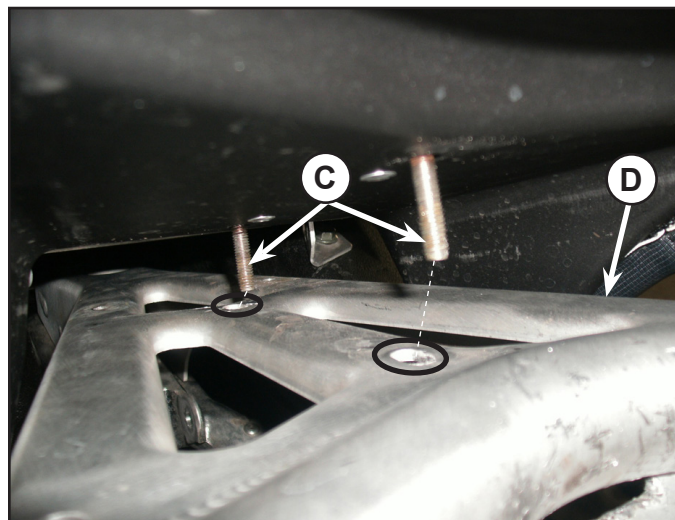
1. Remove seat fastener (A) from rear of seat as shown in figure. Remove seat from vehicle.



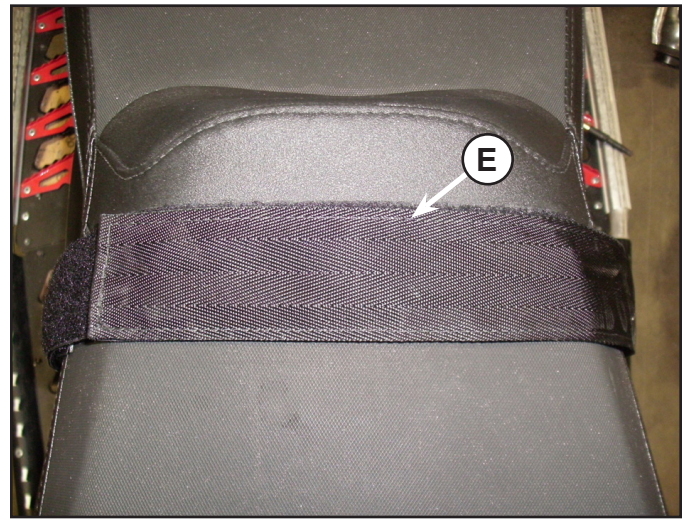
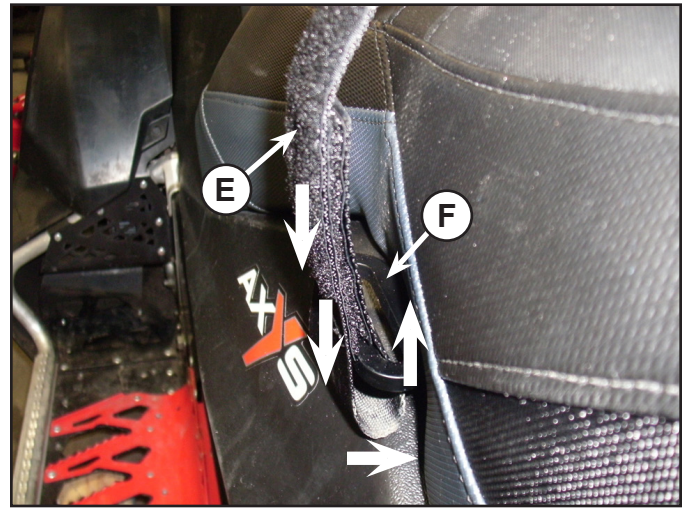
2. Using 2-6 mm x 20 mm screws (B) and 2-6 mm nylock nuts install the seat strap bracket onto the cargo rack as shown in figure. Using a T-30 torx wrench and a 10 mm wrench torque fasteners to 8 ft. lbs. (10.8 Nm).



3. Install the X2 passenger seat with the mounting studs (C) through the cargo rack (D) as shown in figure. Fasten the seat to the cargo rack using 2-6 mm nylock nuts. Torque nuts to 8 ft. lbs. (10.8 Nm).



4. Install passenger seat hand hold strap (E) to seat strap bracket (F) as shown in figure. Bring strap across the top of the seat, through the loop on the other side and back across the top of the seat and connecting the strap with the Velcro fastener. See below figure.

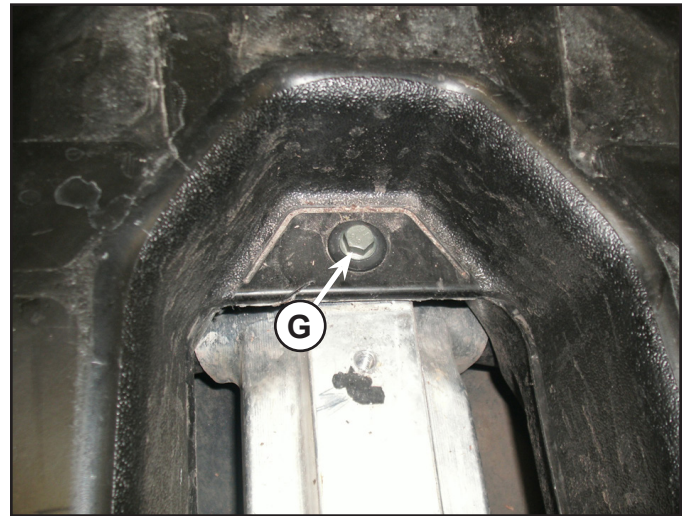


INSTALLATION INSTRUCTIONS FOR PRO S MODELS (HEAVY DUTY SPRING REQUIRED)

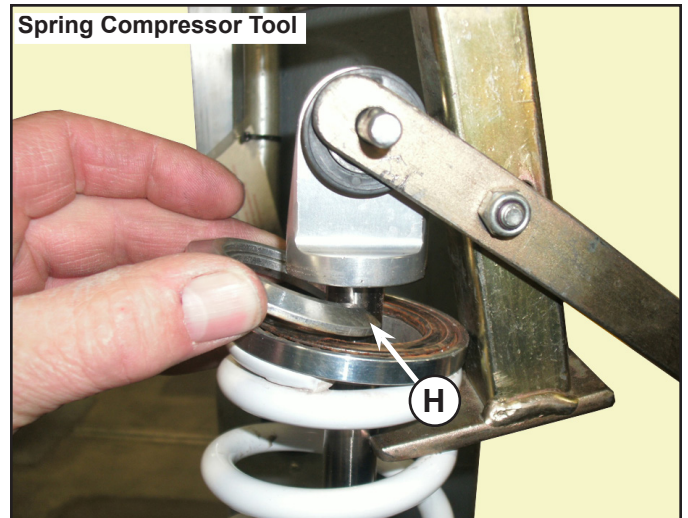
1. Remove seat fastener (A) from rear of seat as shown in figure. Remove seat from vehicle.
2. Using a T-40 torx wrench remove the two front cargo rack mounting bolts. Using a 13 mm socket and ratchet remove the 4-8 mm bolts that fasten the rear of the cargo rack to the chassis. Remove cargo rack. Save fasteners for reassembly.
3. Support the rear of the vehicle with a floor jack or other suitable support device.



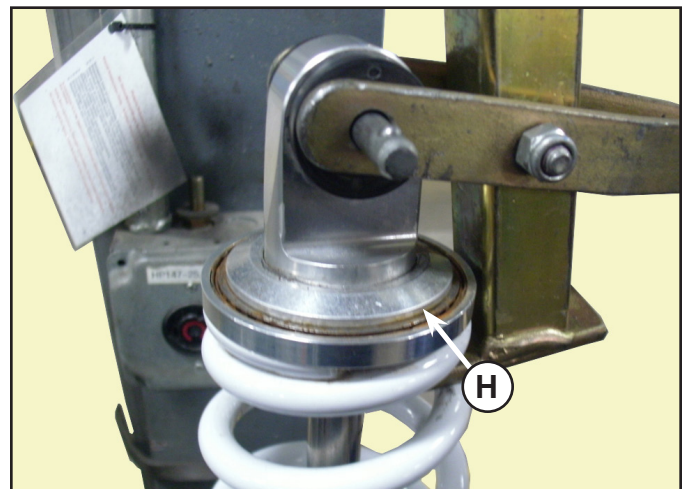
4. Remove the fuel tanks mounting screw (G) shown in figure. Gently lift and support the rear of the fuel tank just enough to remove the shock absorber mounting bolt and nut. With a 15 mm socket, ratchet and 15 mm wrench remove both rear shock mounting bolts and nuts. Remove shock absorber from vehicle.



5. Loosen shock spring adjuster nut all the way to the bottom of the threaded portion of the shock. Carefully clamp shock absorber in vise at lower shock mount. Be sure to protect shock mount from damage. Using spring compressor tool, (P/N 2870623) compress the spring far enough to remove the spring retainer (H) and flat bearing from the shock absorber. Remove the spring from the shock absorber. See figure.



6. Install new heavy duty spring and flat bearing onto shock absorber. Again using the spring compressor tool compress the spring far enough to install the spring retainer. Be sure the spring retainer (H) is fully seated. See figure.



7. Refer to The Perfect Fit section of the owner's manual for the heavy duty spring pre load setting.
8. Reinstall the shock absorber into the vehicle and torque the fasteners to 34 ft. lbs. (46 Nm). Remove support device.
9. Lower the fuel tank back into position and reinstall the fuel tank fastener and torque to 8 ft.lbs. (10.8 Nm).
10. Reinstall the cargo rack and torque the fasteners to 18 ft. lbs. (24.4 Nm).
11. Refer to Steps 2 through 4 in the above Pro X model instructions for X2 passenger seat installation.