

LIGHTBAR MOUNT KIT



P/N 2882815

APPLICATION

Verify accessory fitment at Polaris.com.

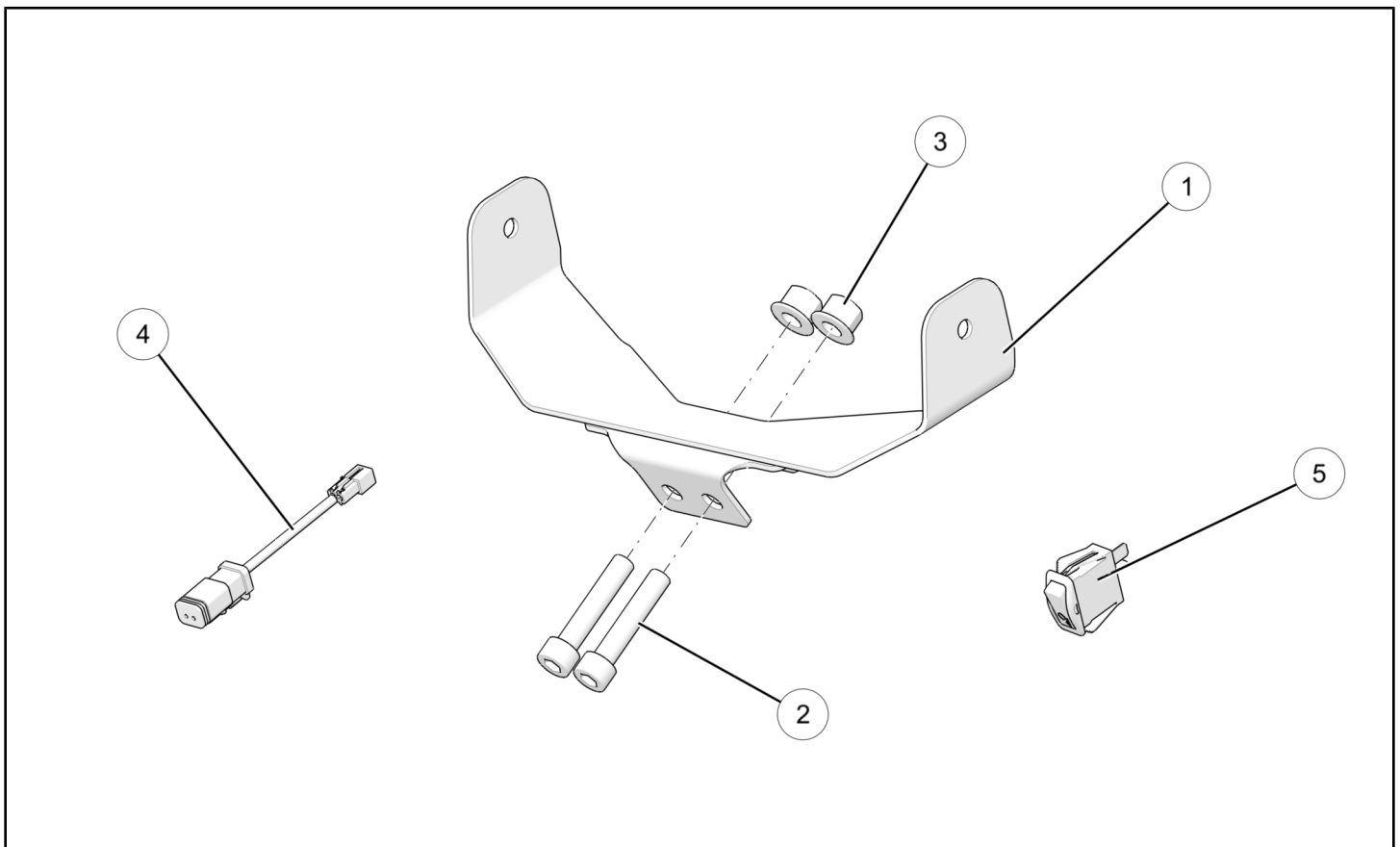
BEFORE YOU BEGIN

Read these instructions and check to be sure all parts and tools are accounted for. Please retain these installation instructions for future reference and parts ordering information.

KIT CONTENTS

This kit contains parts for installation of the Lightbar Mount Kit only. Prior installation of the Titan™ Heavy duty front Bumper Kit, PN 2882794, is also required (sold separately).

This Kit includes:



REF	QTY	PART DESCRIPTION	PART NUMBER
1	1	Lightbar Mount	1024246
2	2	Screw - M10 X 1.5 X 50	7521011
3	2	Lock Nut	7520117
4	1	Harness - Lightbar	2414471
5	1	Switch	4011074
	1	Instructions	9929085

TOOLS REQUIRED

- Safety Glasses
- Cutting Tool
- Drill
- Drill Bit: 5/32" (4 mm)
- Pliers, Side Cutting
- Socket Set, Hex Bit, Metric
- Socket Set, Metric
- Torque Wrench

CONSUMABLES REQUIRED

- None

IMPORTANT

Your Lightbar Mount Kit is exclusively designed for your vehicle. Please read the installation instructions thoroughly before beginning. Installation is easier if the vehicle is clean and free of debris. For your safety, and to ensure a satisfactory installation, perform all installation steps correctly in the sequence shown.

ASSEMBLY TIME

Approximately 30 minutes

NOTE

Additional time may be required for optional steps, or to accommodate other installed accessories.

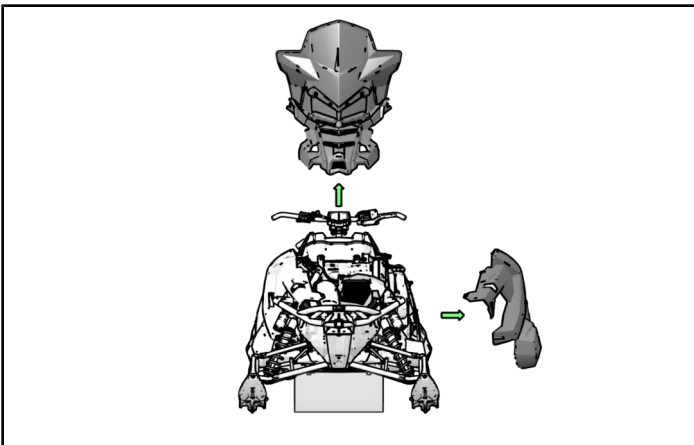
INSTALLATION INSTRUCTIONS

CAUTION

BEFORE STARTING INSTALLATION, always ensure vehicle is on a flat stable surface and is properly secured to avoid accidental tipping or other movement to prevent personal injury and/or damage to equipment. Turn key to "OFF" position and remove from vehicle.

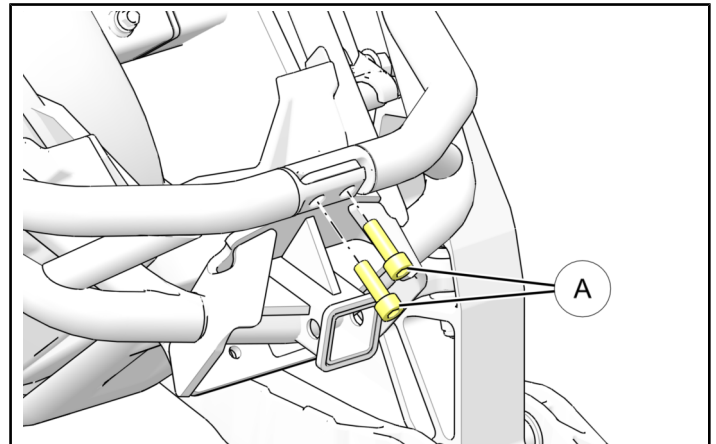
1. Gain access.

- a. Remove hood and left hand side panel as shown.



2. Install lightbar mount.

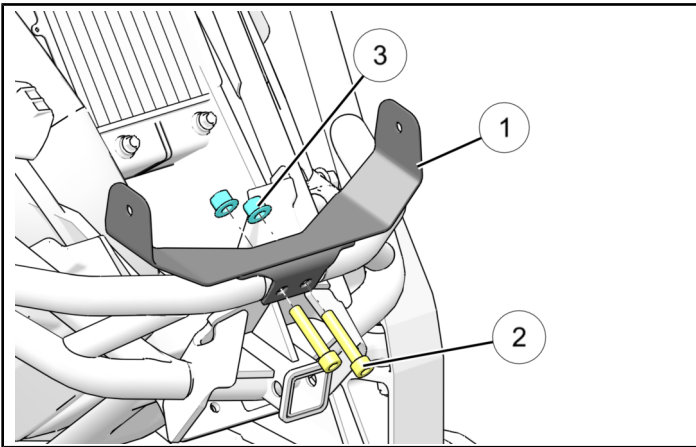
- a. Remove the two upper receiver bolts **A** from the front bumper as shown.



- b. Place the new lightbar mount assembly ① into position as shown and install the two provided bolts ②. Torque to specification provided.

TORQUE

33 ft. lbs. (44.7 Nm)



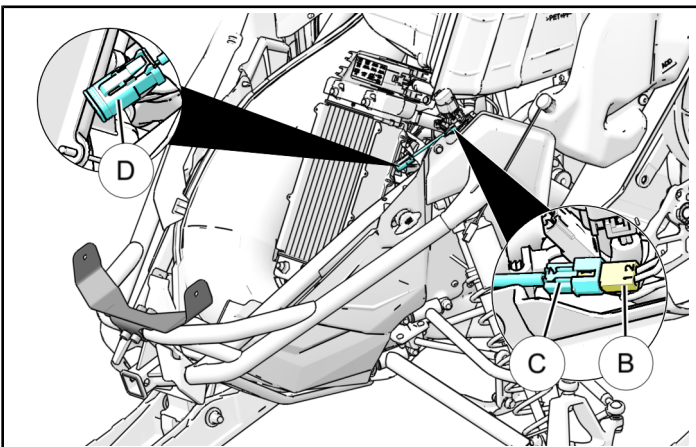
- c. After torquing the bolts, install the two provided locking nuts ③ onto bolts ②. To do so, hold the bolts firmly in position and torque the locking nuts to specification provided. **Ensure that the bolts do not turn while torquing the locking nuts.**

TORQUE

33 ft. lbs. (44.7 Nm)

3. Install electrical harness.

- a. Locate the plastic two pin male electrical connection ⑥ near the inside of the left hand shock tower. Connect the female end ⑦ of the supplied electrical harness ④ to the plastic two pin male electrical connection ⑥ as shown.



- b. Route the remaining portion of the harness forward along the top of the inner bumper tube to be connected to your specific accessory light's electrical harness.

NOTE

Accessory light will get connected to the square male end connector ⑩ of the supplied electrical harness.

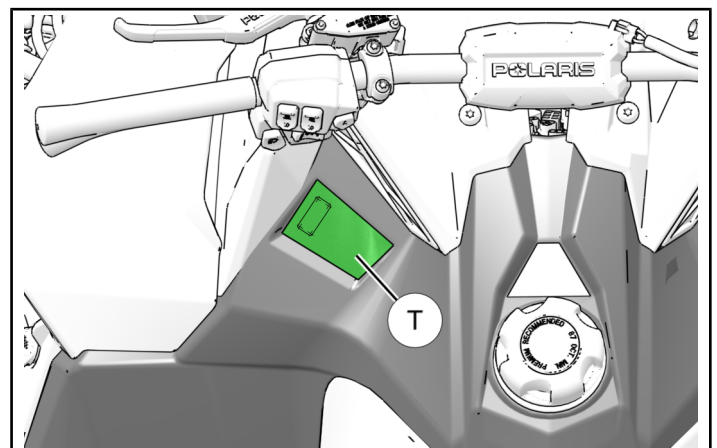
4. Install switch.

- a. Carefully cut out switch location template for the following step from the last page of this instruction. Verify templates were printed to proper scale by using a ruler or tape measure to verify REFERENCE DIMENSION is exactly 4 inches.

IMPORTANT

If your measurement is not exactly 4 inches, then reprint template pages from electronic file using print setting "**Actual Size**" (not "Fit") to obtain proper 1:1 scale. Electronic file available from your **Authorized Polaris Dealer**.

- b. Tape the provided template ① into the indicated position as shown and use a scribe or similar tool to mark the hole locations.



CAUTION

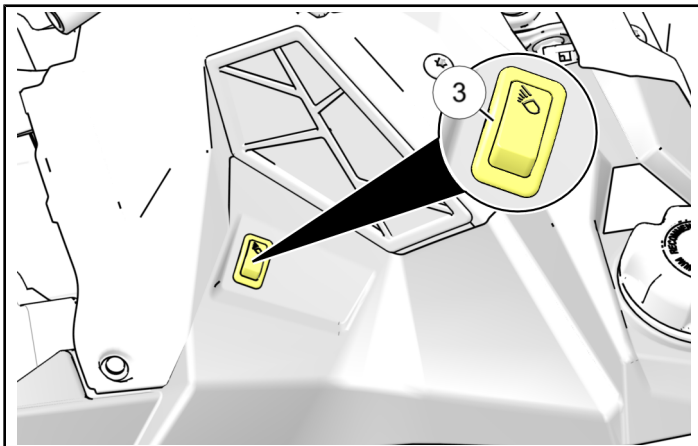
Be sure to reposition and shield ALL electrical wires and connectors that are on the backside of the area to be drilled/cut for the creation of the new mounting hole BEFORE proceeding to the next step. Failure to comply may result in damage to the electrical system and/or underlying components.

- c. After marking the hole locations, use a drill and a 5/32" drill bit to drill the holes into console.
- d. After drilling, use an appropriate cutting tool such as a retractable utility knife (or equivalent) to create the mounting hole by cutting between each drilled hole to form a rectangular shaped mounting hole.

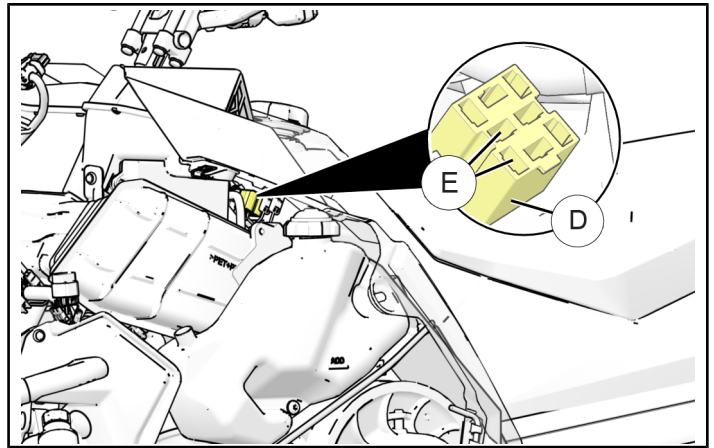
TIP

Start by cutting the mounting hole smaller than needed and slowly trim larger while test fitting switch until properly fitted.

- e. Push switch ③ firmly in to the mounting hole until fully seated in the orientation shown.



- f. Connect switch to existing electrical connector ④ located underneath the left hand side of the console. Ensure the switch is inserted into the powered/wired portion of the electrical connector receptacles ⑤ as shown.



5. **Reinstall previously removed components.**
 - a. Reinstall hood and side panel.
6. **Verify work.**
 - a. Ensure that all steps have been completed and all tools are accounted for.

FEEDBACK FORM

A feedback form has been created for the installer to provide any comments, questions or concerns about the installation instructions. The form is viewable on mobile devices by scanning the QR code or by clicking [HERE](#) if viewing on a PC.

FEEDBACK FORM



