

# AXYS® 144 HITCH KIT



**P/N 2882859;2882915**

## APPLICATION

Verify accessory fitment at [Polaris.com](http://Polaris.com).

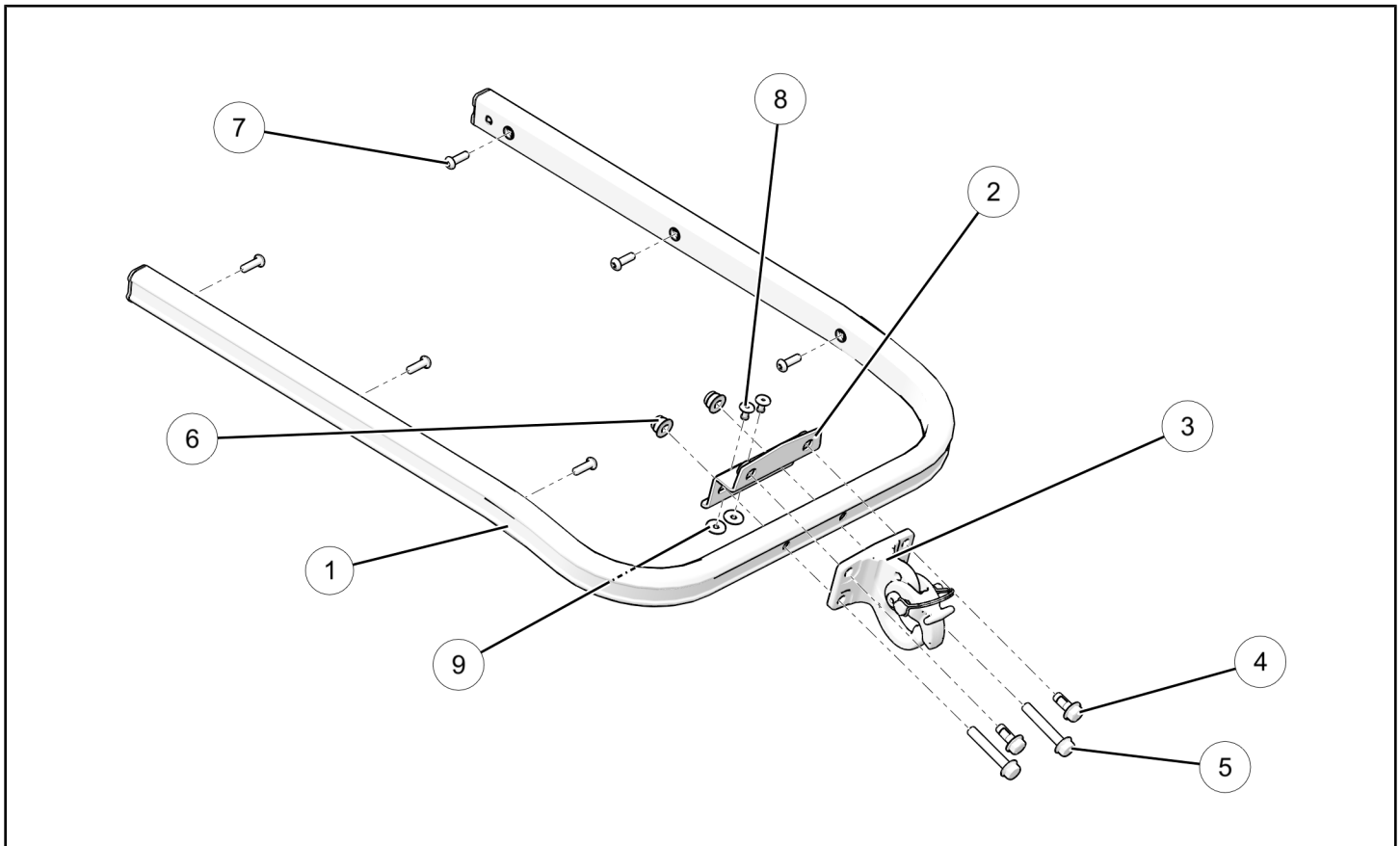
## BEFORE YOU BEGIN

Read these instructions and check to be sure all parts and tools are accounted for. Please retain these installation instructions for future reference and parts ordering information.

## KIT CONTENTS

This Kit includes:

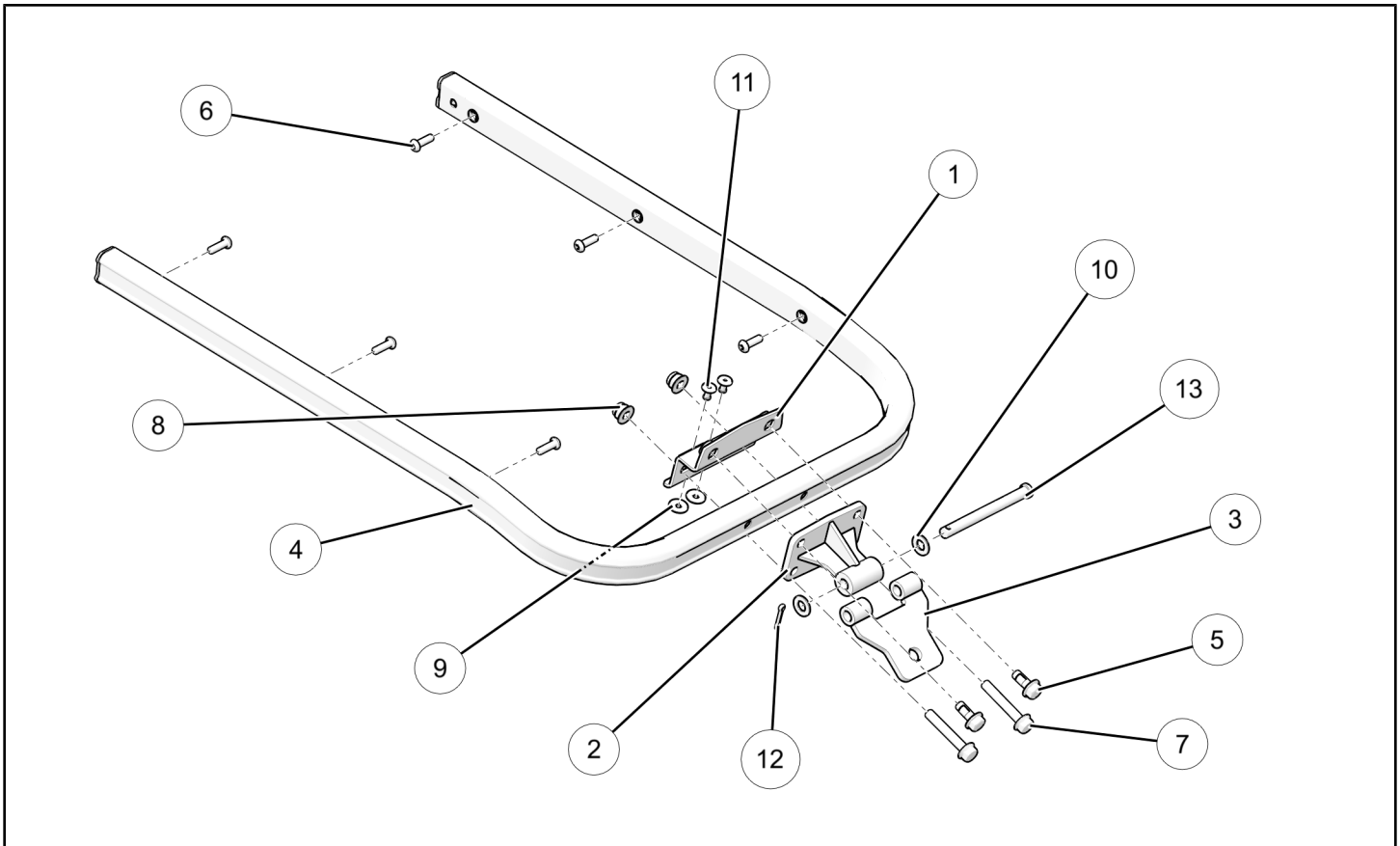
**Kit PN 2882915**



| REF | QTY | PART DESCRIPTION            | PART NUMBER |
|-----|-----|-----------------------------|-------------|
| 1   | 1   | Rear Bumper                 | 2635905     |
| 2   | 1   | Hitch Adapter               | 1023413     |
| 3   | 1   | Forged Hitch Assembly       | 1023736     |
| 4   | 2   | Screw - M8 X 1.25 X 20      | 7518450     |
| 5   | 2   | Screw - M8 X 1.25 X 50      | 7520105     |
| 6   | 2   | Nut, Hex Flange - M8 X 1.25 | 7547317     |
| 7   | 6   | Screw - M6 X 1.0 X 20       | 7518616     |
| 8   | 2   | Rivet - 3/16"               | 7621433     |

| REF | QTY | PART DESCRIPTION                | PART NUMBER |
|-----|-----|---------------------------------|-------------|
| 9   | 2   | Rivet Washer - .20 X .67 X .048 | 7556034     |
|     | 1   | Instructions                    | 9928014     |

**Kit PN 2882859**



| REF | QTY | PART DESCRIPTION                 | PART NUMBER |
|-----|-----|----------------------------------|-------------|
| 1   | 1   | Rear Bumper                      | 2635905     |
| 2   | 1   | Hitch Adapter                    | 1023413     |
| 3   | 1   | Hitch Mount                      | 1023488     |
| 4   | 2   | Screw - M8 X 1.25 X 20           | 7518450     |
| 5   | 2   | Screw - M8 X 1.25 X 50           | 7520105     |
| 6   | 2   | Nut, Hex Flange - M8 X 1.25      | 7547317     |
| 7   | 6   | Screw - M6 X 1.0 X 20            | 7518616     |
| 8   | 2   | Rivet - 3/16"                    | 7621433     |
| 9   | 2   | Rivet Washer - .20 X .67 X .048  | 7556034     |
| 10  | 2   | Flat Washer - .390 X .750 X .065 | 7556188     |
| 11  | 1   | Standard Hitch                   | 1023491     |
| 12  | 1   | Cotter Pin                       | 7661407     |
| 13  | 1   | Hitch Pin                        | 7662337     |
|     | 1   | Instructions                     | 9928014     |

## TOOLS REQUIRED

- Safety Glasses
- Pliers, Needle Nose
- Pop Rivet Puller
- Socket Set, Metric
- Socket Set, Torx® Bit
- Torque Wrench
- Wrench Set, Metric

## IMPORTANT

Your AXYS® 144 Hitch Kit is exclusively designed for your vehicle. Please read the installation instructions thoroughly before beginning. Installation is easier if the vehicle is clean and free of debris. For your safety, and to ensure a satisfactory installation, perform all installation steps correctly in the sequence shown.

## ASSEMBLY TIME

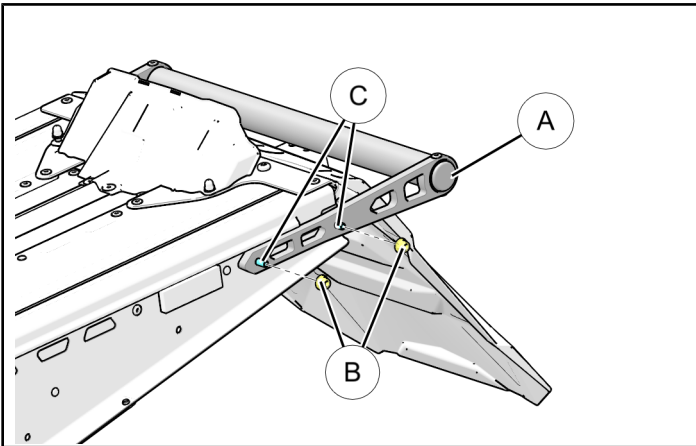
Approximately 30 minutes

### NOTE

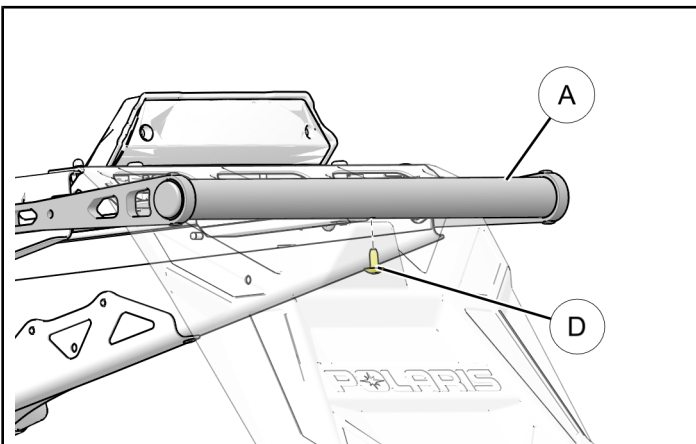
Additional time may be required for optional steps, or to accommodate other installed accessories.

## INSTALLATION INSTRUCTIONS

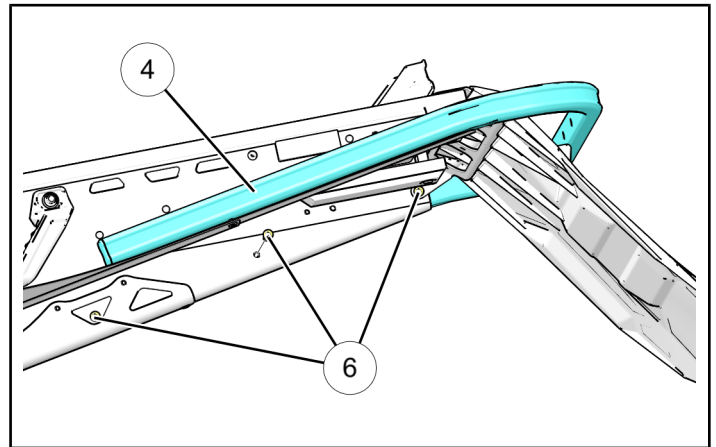
1. Remove stock rear bumper (A).
  - a. Remove two nuts (B) and two bolts (C) that secure the rear bumper to the chassis from each side of the vehicle.



Remove remaining fasteners (D) securing snow flap to the rear bumper as shown.



2. Install provided rear bumper (1).
  - a. Place the rear bumper (1) that was provided with your kit into place by lining up the six mounting holes as shown. Secure into place using provided fasteners (7). Torque to specification provided.



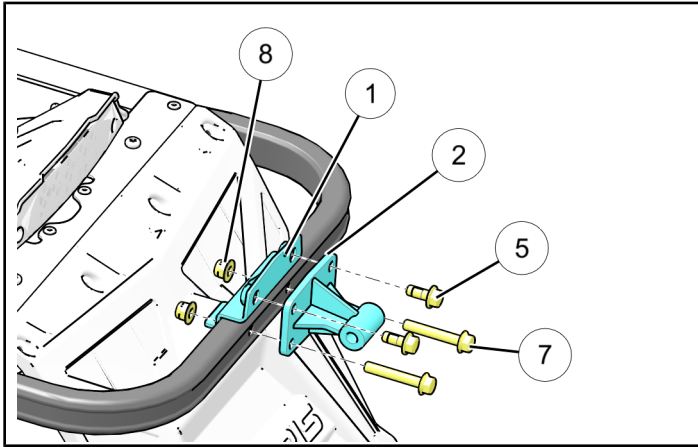
### TORQUE

6 Ft. Lbs. (8.5 Nm)

3. If installing Kit PN 2882895 see step 3a. If installing Kit PN 2882915 see step 3b.

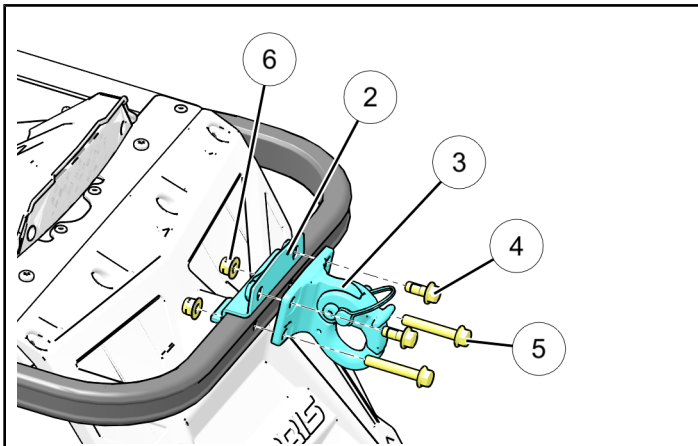
**a. Kit PN 2882895**

Install hitch mount ③ as shown. Secure into place using providing fasteners ④/⑤/⑥. Torque to provided specification.



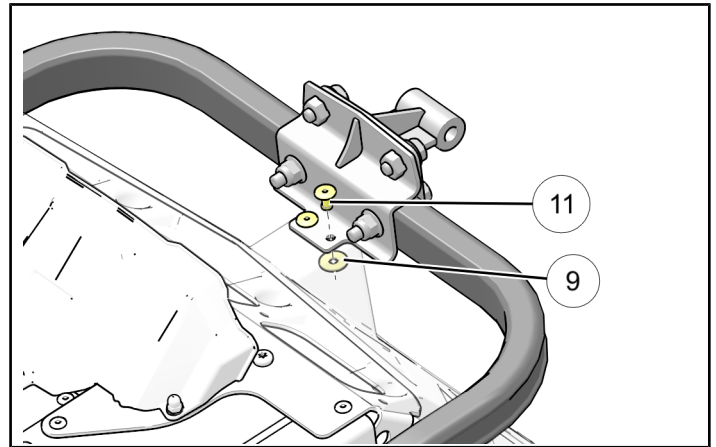
**b. Kit PN 2882915**

Install forged hitch assembly ③ as shown. Secure into place using providing fasteners ④/⑤/⑥. Torque to provided specification.



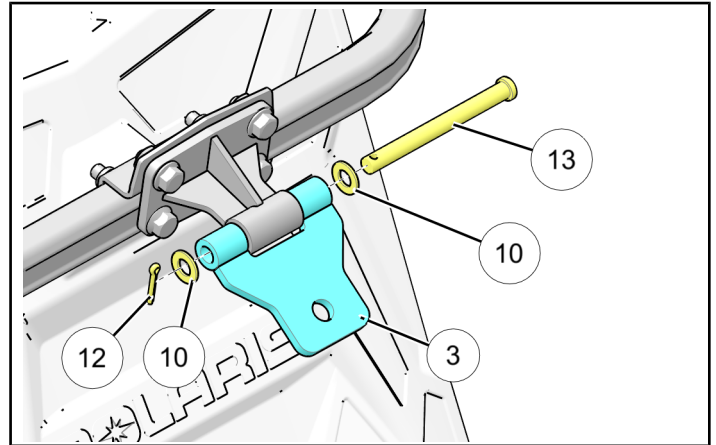
**TORQUE**  
20 Ft. Lbs. (27 Nm)

c. Secure snow flap to hitch assembly using provided rivets ⑧ and washers ⑨ as shown.

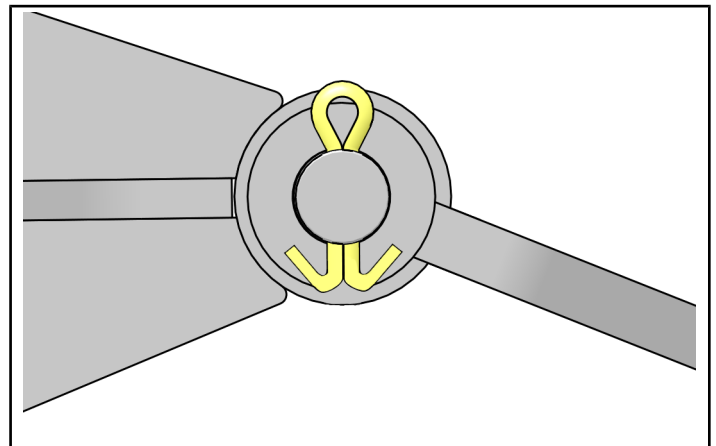


If installing kit PN 2882895 continue to next step. If installing kit PN 2882915, skip to step 4.

d. Install standard hitch ⑪ onto hitch mount as shown using the provided hitch pin ⑬, washers ⑩ and cotter pin ⑫.



After inserting the cotter pin into position bend the individual legs of cotter pin ⑫ in opposite directions as shown below to properly secure the hitch pin.



4. Check to ensure all tools are accounted for and all steps have been completed.

## FEEDBACK FORM

A feedback form has been created for the installer to provide any comments, questions or concerns about the installation instructions. The form is viewable on mobile devices by scanning the QR code or by clicking [HERE](#) if viewing on a PC.

