

MIRROR KIT

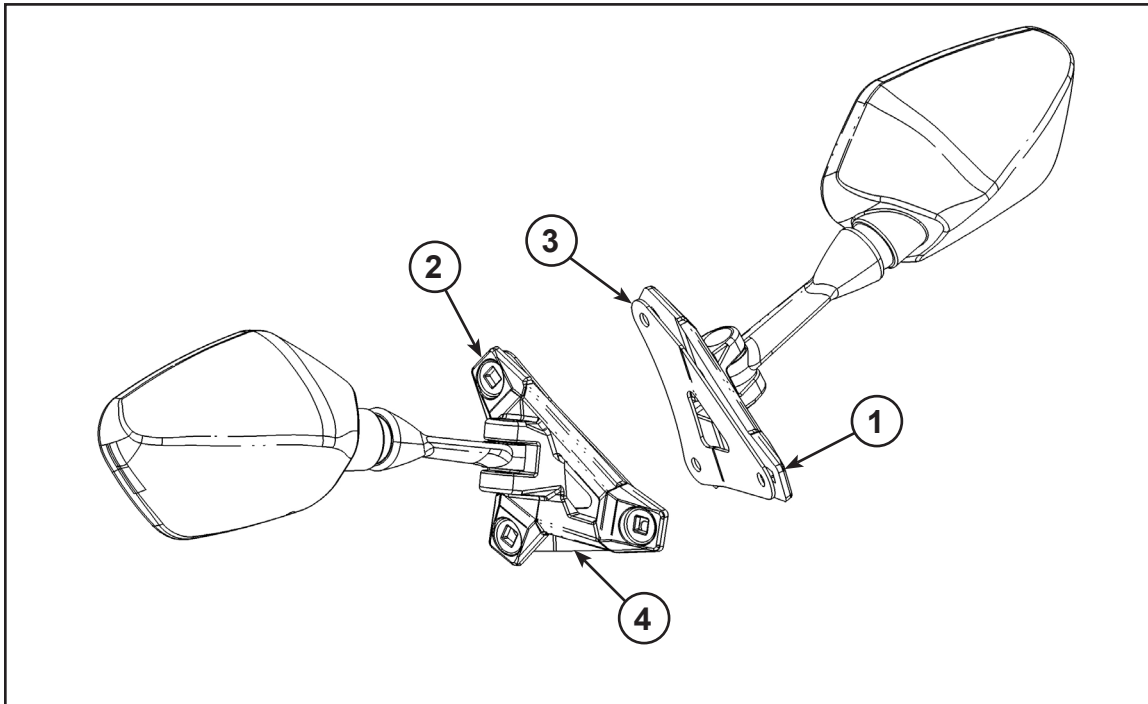
P/N 2880292

Application

MY15 RUSH/SWITCHBACK



Before you begin, read these instructions twice and check to be sure all parts and tools are accounted for. Please retain these installation instructions for future reference and parts ordering information.



Kit Contents:

<u>Ref</u>	<u>Qty</u>	<u>Part Description</u>	<u>Part Number</u>
1	1	Mount-Mirror LH	5139349
2	1	Mount-Mirror RH	5139350
3	1	Plate -Mirror Mount LH	5259450
4	1	Plate -Mirror Mount RH	5259451
	6	6 mm Carriage Bolts	-
	6	6 mm Nylock Nuts	-
	1	Instructions	9925239

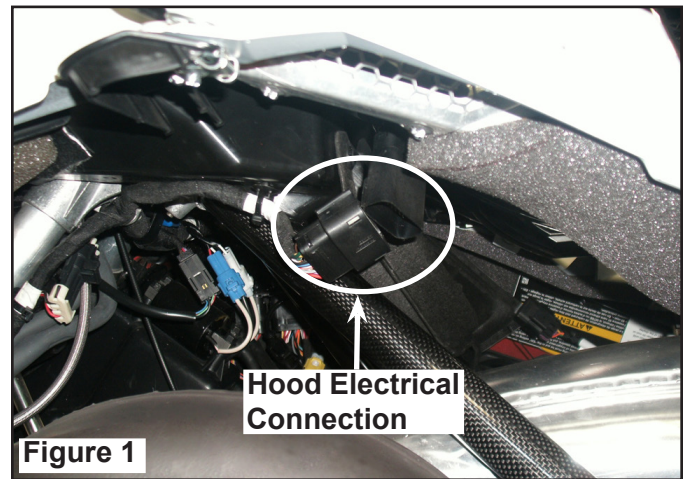
Tools Required:

5/16" Drill Bit	Torque Wrench	Drill
Drill Stop	Ratchet wrench	10 mm Socket

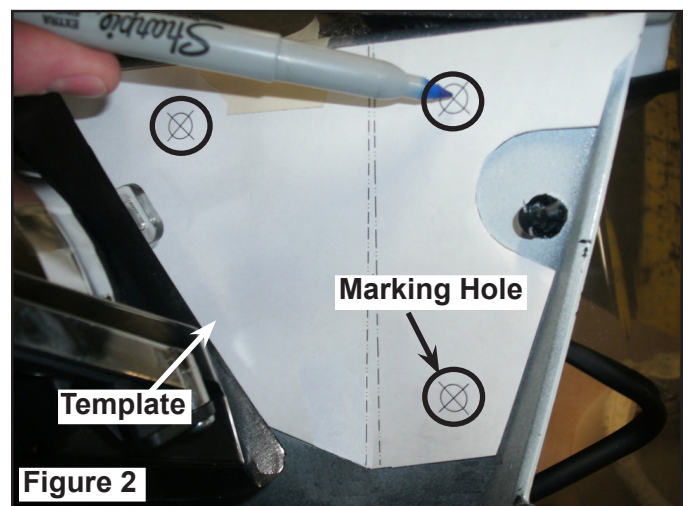
IMPORTANT: Your Polaris MIRROR KIT is exclusively designed for your vehicle. Please read the installation instructions thoroughly before beginning. Installation is easier if the vehicle is clean and free of debris. For your safety, and to ensure a satisfactory installation, perform all installation steps correctly in the sequence shown.

INSTALLATION INSTRUCTIONS:

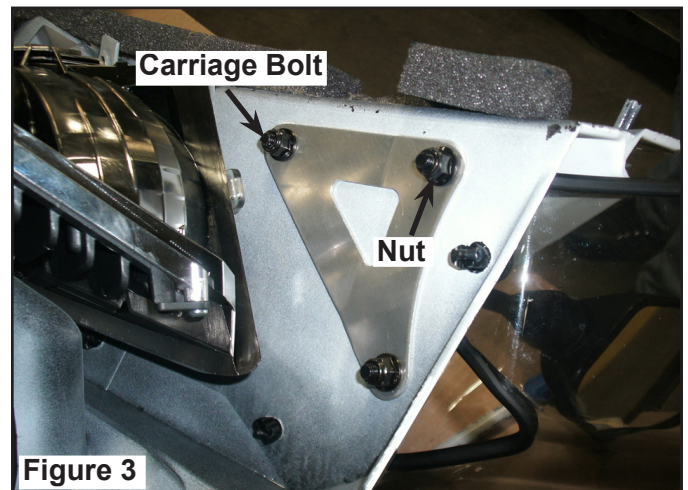
1. Remove both side panels.
2. Disconnect hood electrical connection as shown in Figure 1 and remove the hood.
3. Place the hood on a protective work surface in the upside down position.



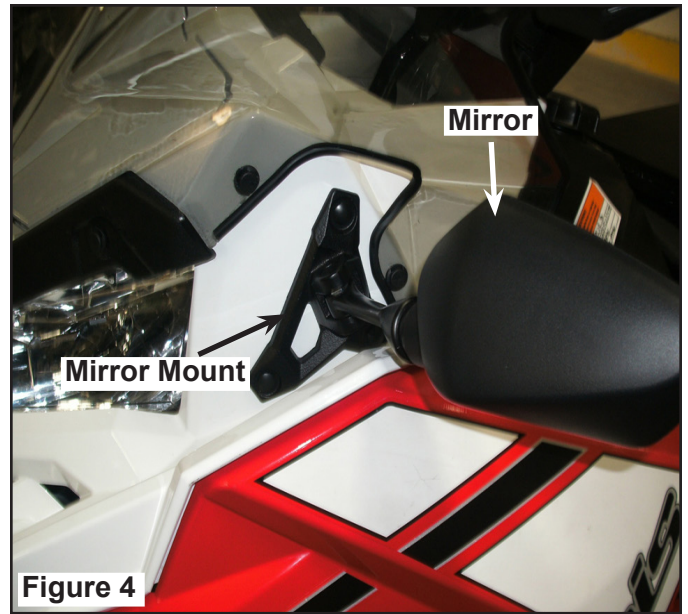
4. Cut template out of the instruction sheet and place on the inside of the hood as shown in Figure 2.
5. With a scribe or other suitable tool mark the three hole locations at the center of each X on the template and remove. Save template for use on other side.



6. Using a 5/16" drill bit with a drill stop located 1/2" from the tip of the drill bit, drill the three holes that were marked in Step 5.
7. Install 3- 6 mm carriage bolts into the mirror base, through hood, and backer plate. Figure 3.
8. Install 3- 6 mm nuts onto carriage bolts and torque to 8 ft.lbs. (10.9 Nm). Figure 3.

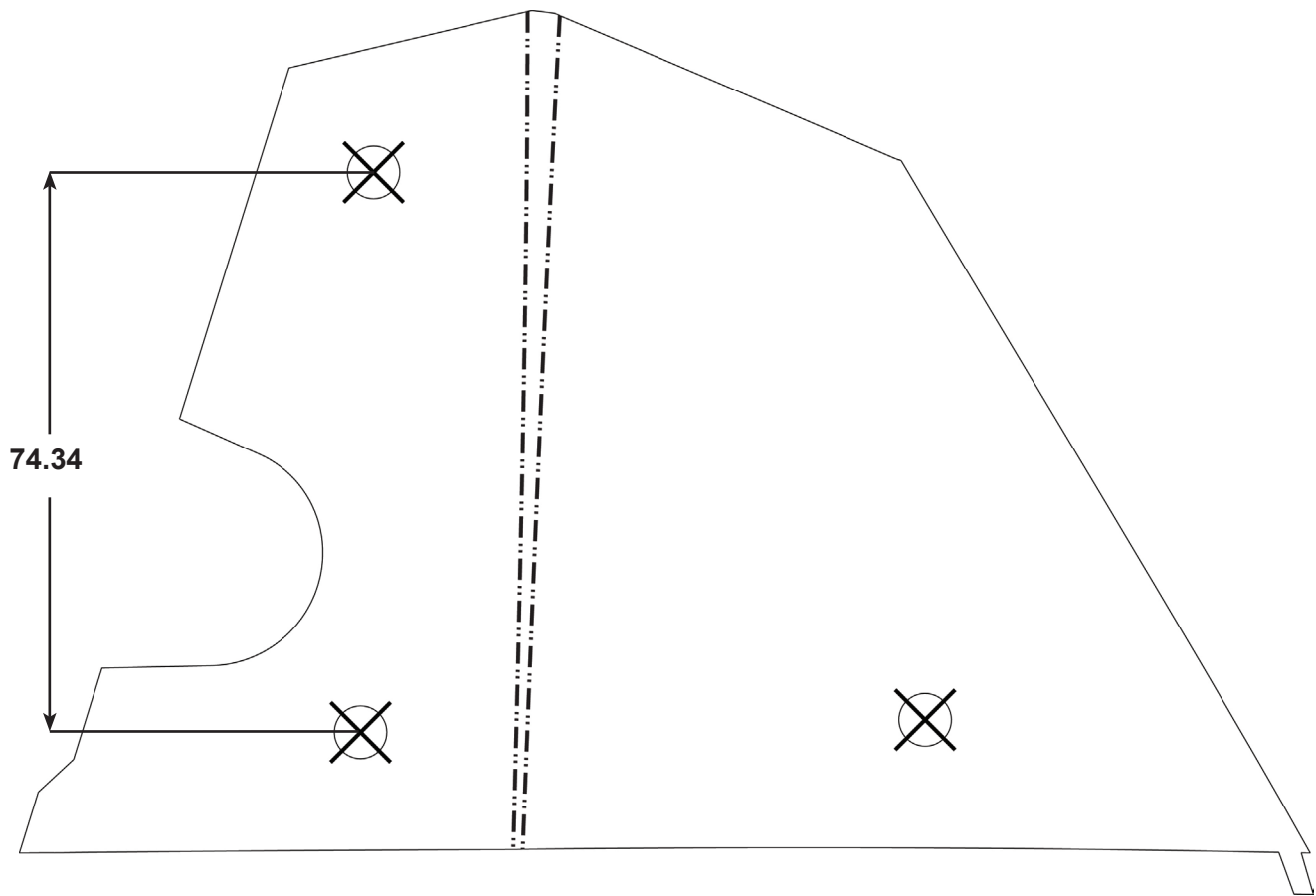


9. Repeat Steps 1-7 for the other side and complete the mirror installation process as shown in Figure 4.



THIS PAGE IS INTENTIONALLY LEFT BLANK

MIRROR TEMPLATE:



**SCALED 1:1
MEASURE TO VERIFY**