

AXYS SWITCHBACK FOX ADJUSTABLE COMPRESSION SHOCK KIT



P/N 2881411

APPLICATION

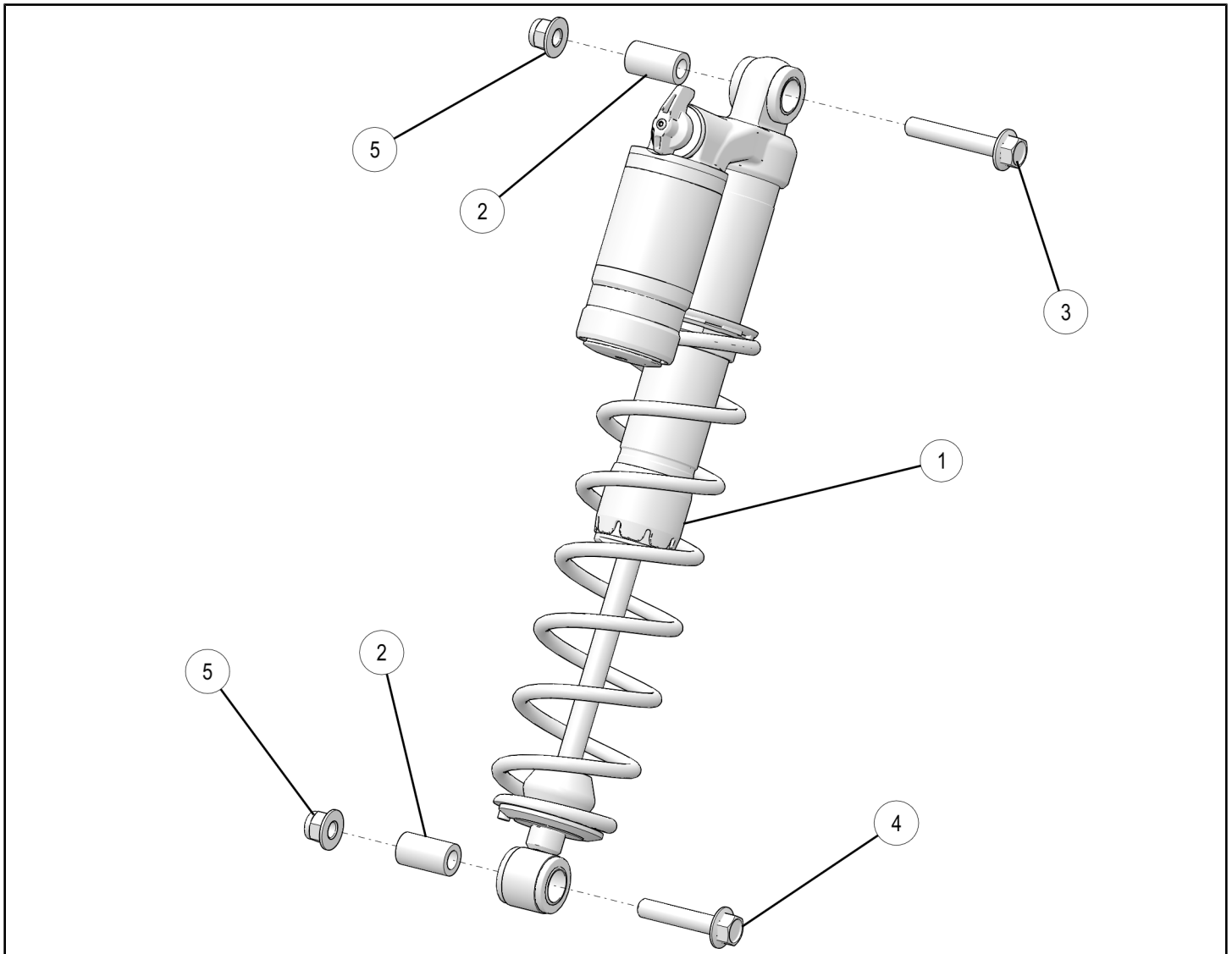
AXYS Switchback

BEFORE YOU BEGIN

Read these instructions and check to be sure all parts and tools are accounted for. Please retain these installation instructions for future reference and parts ordering information.

KIT CONTENTS

This Kit includes:



REF	QTY	PART DESCRIPTION	PART NUMBER
1	1	Shock Assembly IFS Fox Adjustable Compression	1824348-133
2	2	Bushing - M10 X 17.5 X 30	5137360
3	1	Screw - M10 X 1.5 X 60 - 8.8	7518941

REF	QTY	PART DESCRIPTION	PART NUMBER
4	1	Screw - M10 X 1.5 X 50 8.8	7518971
5	2	Nyloc Nut - M10 X 1.5	7547423
	1	Instructions	9926693

TOOLS REQUIRED

- 17 mm Socket with corresponding Ratchet
- 17 mm Wrench
- Floor Jack
- Torque Wrench

IMPORTANT

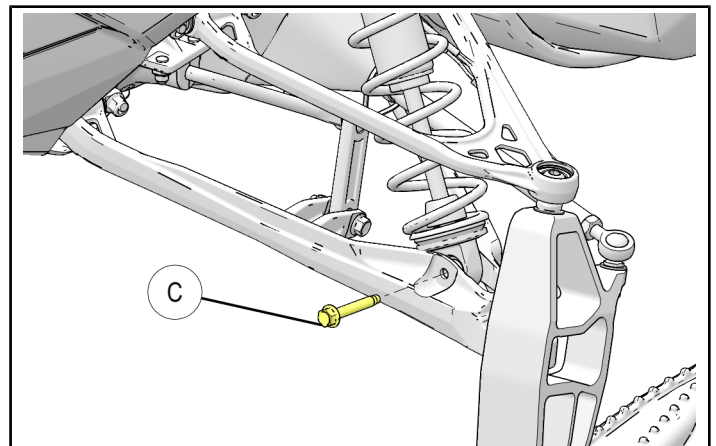
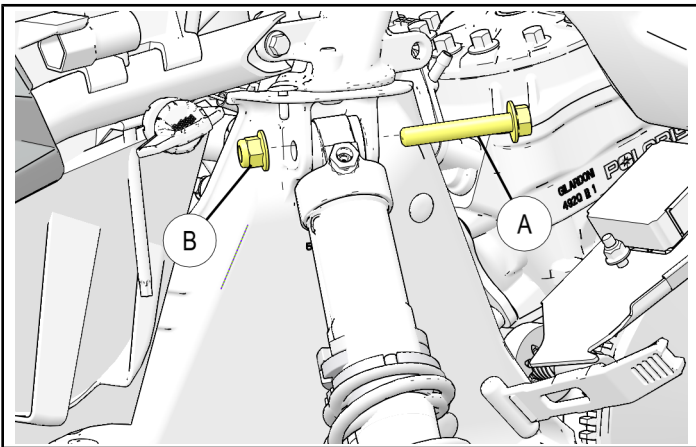
Your AXYS SWITCHBACK FOX ADJUSTABLE COMPRESSION SHOCK KIT is exclusively designed for your vehicle. Please read the installation instructions thoroughly before beginning. Installation is easier if the vehicle is clean and free of debris. For your safety, and to ensure a satisfactory installation, perform all installation steps correctly in the sequence shown.

ASSEMBLY TIME

Approximately 30 minutes

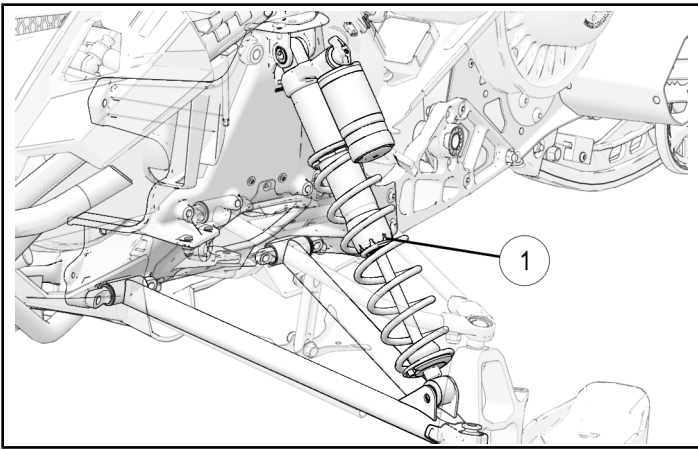
INSTALLATION INSTRUCTIONS

1. Securely raise front end 4 inches off the ground using floor jack.
2. Remove side panels.
3. Remove rubber shock bolt access plug located in fender.
4. Remove M10 X 60 mm upper shock mounting bolt (A) and nut (B) using two 17 mm wrenches.
5. Remove M10 X 50 mm lower shock mounting bolt (C) using 17 mm socket and ratchet.

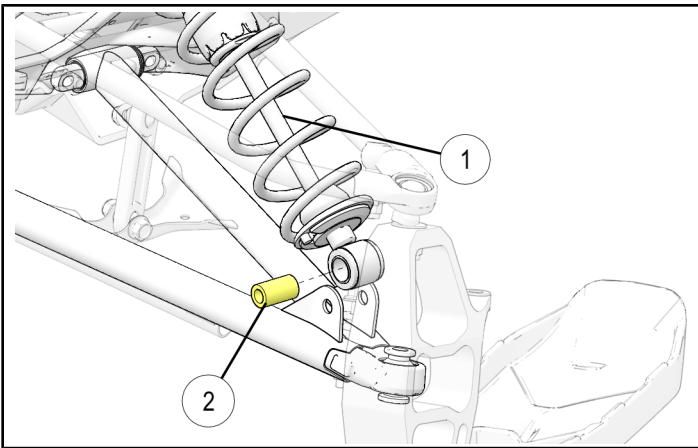


6. Remove shock by pulling top of shock outward.

7. Install new shock ① into proper mounting location.



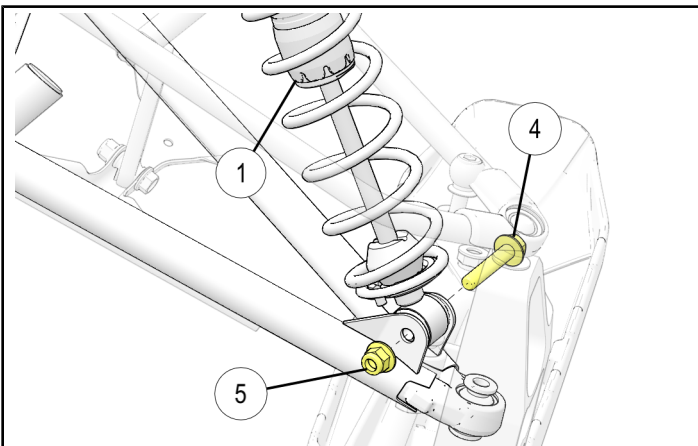
8. Insert bushing ② into lower mounting hole before installing bolt through lower shock ①.



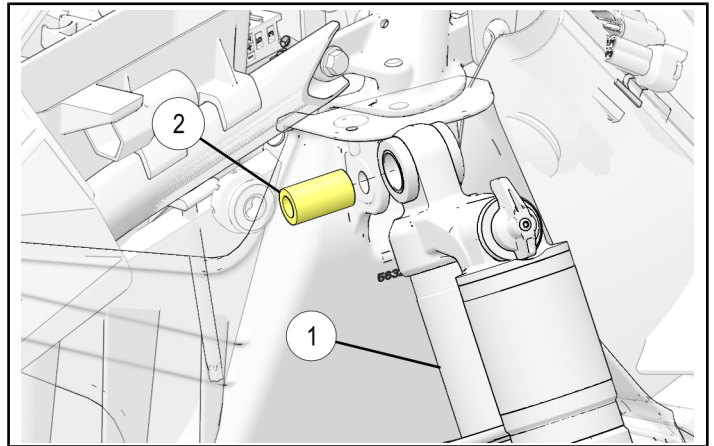
9. Install M10 X 50 mm lower mounting bolt ④ and nut ⑤ inserting through lower shock ① as shown. Torque to below specification. Do not over tighten, as thread damage in lower control arm may occur.

TORQUE

18 ft. lbs. (25 Nm)



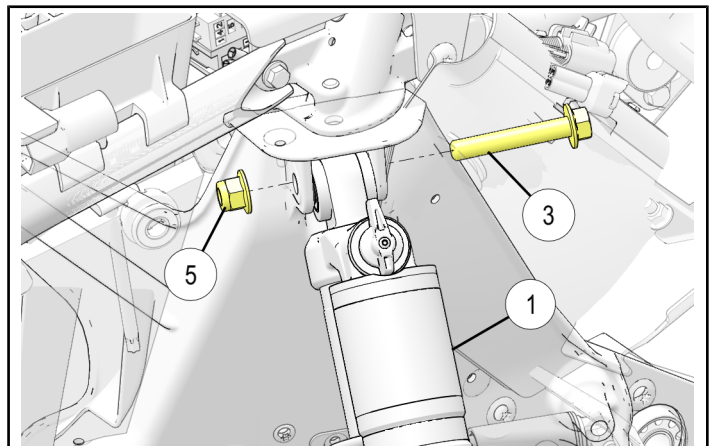
10. Insert bushing ② into upper mounting hole before installing bolt through upper shock ①.



11. Install M10 X 60 mm upper mounting bolt ③ and nut ⑤ inserting from back to front to ensure nut attachment is toward the front end of vehicle. Torque to below specification.

TORQUE

37 ft. lbs. (50 Nm)



12. Install rubber shock bolt access plug located in fender.

13. Install side panels back onto vehicle.

14. See Owner's manual for spring pre-load adjustment.