

**WEAR STRIP KIT
(All Stud Installation)
P/N 2877687**



POLARIS
The Way Out.®

Application

All 2008 and 2009 Polaris IQ 121 and IQ 136 Switchbacks

Before you begin, read these instructions twice and check to be sure all parts and tools are accounted for. Please retain these installation instructions for future reference and parts ordering information.

This kit includes:

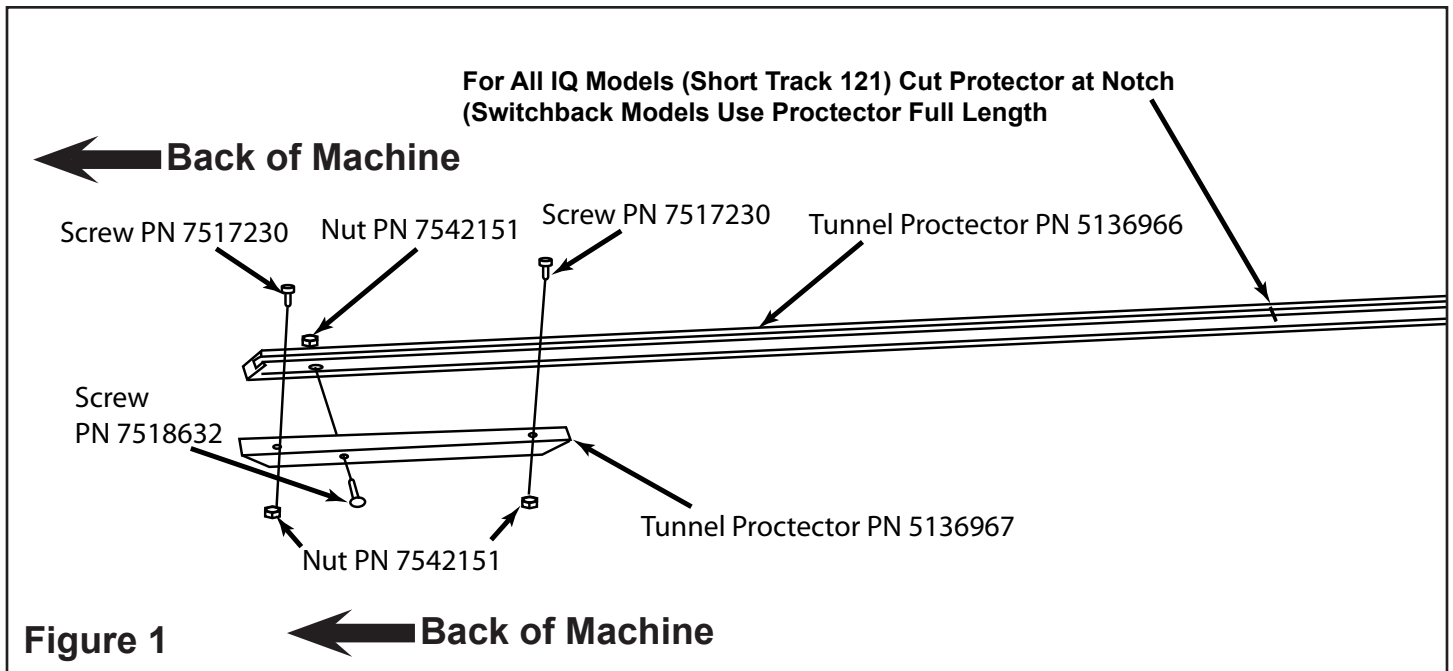
Qty	Part Description	Part Number
2.....	Tunnel Protector	5136966
2.....	Tunnel Protector	5136967
4.....	Screw 1.01 TX/TR	7517230
2.....	Screw 1.75 TRTX	7518632
6	Nut	7542151
4.....	3/16" Rivet	7661637
6	Dart Clip	7670088
1	Instructions	9922370

Tools Required:

- | | |
|------------------|--------------------------------|
| T-27 Torx Wrench | Rivet Gun |
| Drill | Hammer |
| 3/16" Drill Bit | Small Punch |
| 1/4" Drill Bit | Pliers or small Vise-Grips |
| Saw | 7/16" Socket and Socket Wrench |

IMPORTANT: For your safety, and to ensure a satisfactory installation, perform all installation steps correctly in the sequence as shown on the attached instructions.

INSTALLATION INSTRUCTIONS



1. Use a T-27 Torx wrench to remove the rear four or six screws holding the bumper to the chassis. Set the screws and washers aside for reassembly. Pull the bumper out.
2. Use a 1/4" drill bit to remove the six black plastic rivets that hold the taillight cover shroud to the chassis. Remove the shroud and set aside for reassembly. The best method for doing this is to first use a 1/16" punch and hammer to punch out the rivet "nail" in the center of the rivet. Then, firmly grasp the rivet on the underside of the closeoff with a pliers or small Vise-Grip, and use a 1/4" drill to drill off the head of the rivet.
3. Remove the four rivets holding the closeoff to the chassis. The best method for doing this is to first use a 1/16" punch and hammer to punch out the rivet "nail" in the center of the rivet. Then, firmly grasp the rivet on the underside of the closeoff with a pliers or small Vise-Grip, and use a 3/16" drill to drill off the head of the rivet. Unplug the taillight and set the closeoff / taillight assembly aside for reassembly.
4. Assemble wear strip per Figure 1 on page 1.
5. Slide the protectors onto the mounts on the underside of the tunnel. Mark the length to be cut off at the end of the protector mounts. Remove the protectors and cut to the length marked on the protector. Reinstall the protectors onto the mounts on the underside of the tunnel.
6. Reinstall the closeoff using the 3/16" rivets supplied. Plug in the taillight.
7. Use the six dart clips to reinstall the taillight cover.
8. Slide the bumper back into place and secure with the screws and washers removed in Step 1.

Installation Illustration

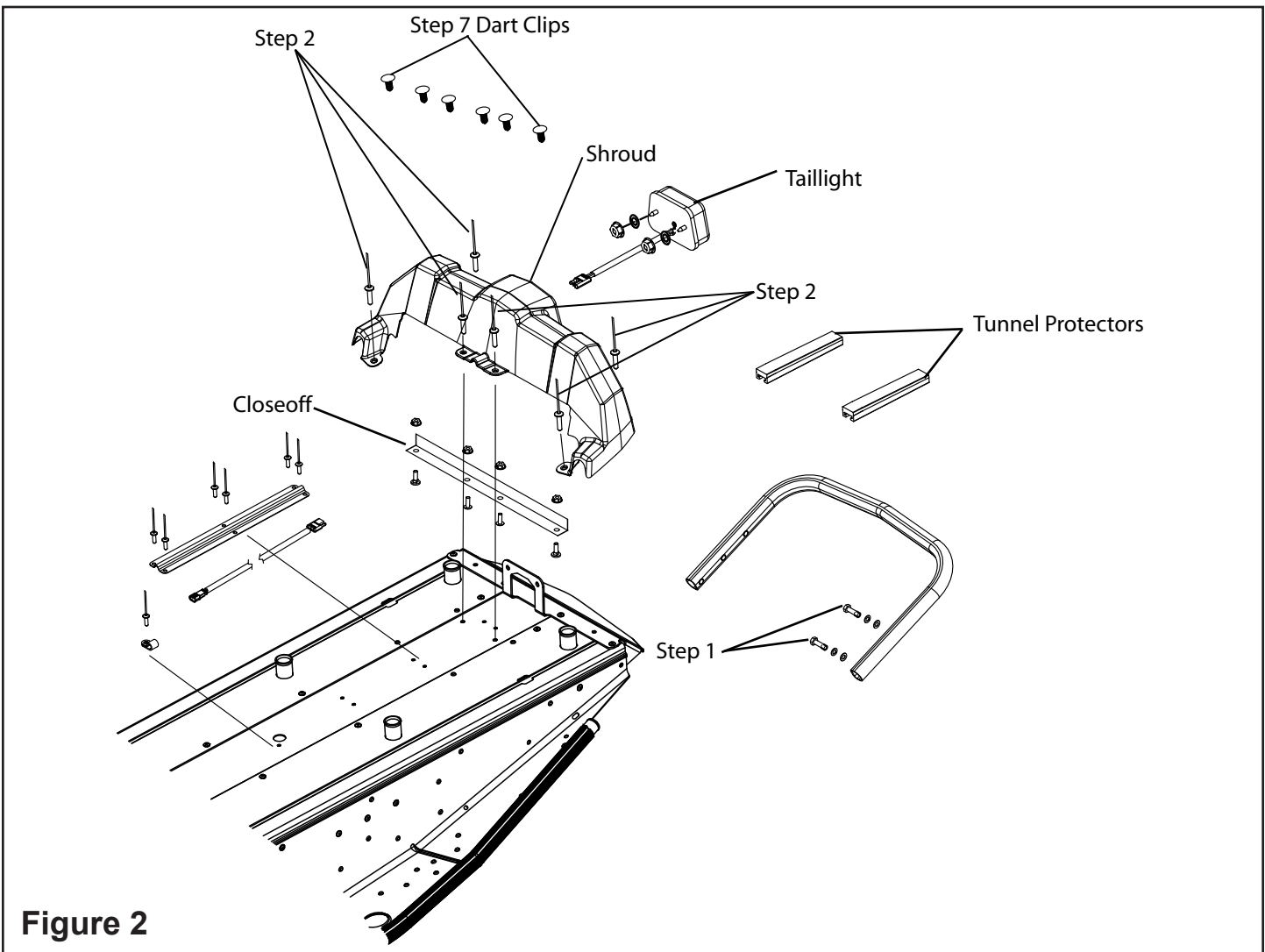


Figure 2